

Product datasheet for RC217516

Gemin 5 (GEMIN5) (NM_015465) Human Tagged ORF Clone

Product data:

Product Type:	Expression Plasmids
Product Name:	Gemin 5 (GEMIN5) (NM_015465) Human Tagged ORF Clone
Tag:	Myc-DDK
Symbol:	Gemin 5
Synonyms:	GEMIN-5; NEDCAM
Mammalian Cell Selection:	Neomycin
Vector:	pCMV6-Entry (PS100001)
E. coli Selection:	Kanamycin (25 ug/mL)
ORF Nucleotide Sequence:	>RC217516 representing NM_015465 Red=Cloning site Blue=ORF Green=Tags(s)

TTTTGTAATACGACTCACTATAGGGCGGCCGGAATTCGTCGACTGGATCCGGTACCGAGGAGATCTGCC
GCC**CGATCGCC**

ATGGGGCAGGAGCCGGACGCTGCCGCCCTCCCCAACTGGTACTGCGCCCGCTGCAGCGATGCCGTGC
CCGGGGGCTCTTTGGCTTCGCCGCGGGACCTCCGTCTCCTTGTCCGCGTGGGCCCGGGCGCAGGCGA
GAGTCCAGGGACACCCCGTTTCGAGTCATAGGAGAGTTGGTGGGACACACCGAAAGGGTCTCTGGCTTC
ACATTTTCTCATACCCTGGTCAGTACAACCTCTGTGCCACCAGCTCCGACGATGGGACTGTGAAAATAT
GGGATGTAGAGACAAAAACAGTTGTGACAGAACATGCACTCCATCAGCATACGATATCAACATTACATTG
GTCTCCTCGAGTAAAGGACTTAATAGTATCTGGGGATGAAAAAGGAGTAGTTTTCTGTTACTGGTTAAC
AGAAATGACAGCCAGCACCTCTTATAGAACCAGGACAATTTCTGTCTTACTTGTTCACCTCATCATG
AAGATTTAGTAGCCATTGGCTACAAGGATGGCATAGTGGTGATAATTGACATCAGTAAGAAAGGAGAAGT
TATTCATAGGCTTCGAGGCCATGATGATGAAATCCACTCCATAGCCTGGTGTCCCTGCCTGGTGAAGAT
TGTTTATCTATAAACCAAGAGGAACTTCAGAAGAAGTGAAATTACCAACGGGAATGCTGTAGCACAAG
CTCCAGTAACAAAAGGTTGCTACTTAGCCACTGGAAGCAAAGTCAAACCTCGAATCTGGAGCTGTTCT
TAGAGGCCGAGGGGTGATGATTTTAAAATTGCCCTTCTGAAGAGAAGAGGAGGGGGTATAGACCAACT
GTTAAAGAGCGCCTTTGGTTGCACTCCATTGGCCAGCAATCAACCAACACAGCTGGTATCTAGCTGTT
TTGGAGGTGAACTGTTGCAATGGGATCTCACTCAATCTTGAGACGGAATAACACCTCTTCAGTGCCCTC
ATCAGAAGGGCAAATCATTCAAGAATTGTGTTAATTTATGTCCTTTACAAACAGAGGATGACAAACAG
CTATTACTTTCTACATCAATGGATAGAGATGTAATGTTGGGACATAGCCACCTTGAGTGCAGCTGGA
CCCTTCTTCCCTGGTGGGTTGCATACAGCCTGGCTTCTCTTCTGTGGACATAGGCTCTTTGGCCAT
AGGTGTTGGGATGGCATGATCCGTGTATGGAATACACTCTCCATAAAGAACAATATGATGTGAAAAAT
TTTTGGCAAGGCGTGAAGTCCAAGGTTACAGCGCTGTGCTGGCACCAACCAAGGAAGGTTGCTTAGCTT
TTGGAAGTGTATGAAAAAGTGGGATTGTATGACACCTACTCCAACAAGCTCCACAGATTTCTAGCAC
ATATCATAAGAAGACTGTATATACTTTAGCCTGGGGCCACCAGTACCCCATGCACTTGAGGAGAA



[View online »](#)

GGAGACAGACCTTCCCTTGCTTTATACAGCTGTGGAGGAGAAGGGATTGTCTTACAGCATAATCCCTGGA
AGCTTAGTGGAGAAGCCTTTGACATCAACAACTCATCAGGGACACCAATTCAATCAAATACAAATTGCC
TGTACACACAGAGATAAGTTGGAAGCAGATGGCAAAATCATGGCTCTTGGCAATGAAGATGGATCAATA
GAAATATTTAGATTCCCAACCTGAACTGATCTGTACTATCCAACAGCATCACAAGCTTGTGAATACCA
TTAGCTGGCATCATGAGCATGGCAGCCAGCCAGAATTGAGCTATCTGATGGCCTCTGGCTCCAACAATGC
AGTCATTTACGTGCACAACCTGAAGACTGTCATAGAGAGCAGCCCTGAGTCTCCAGTGACCATTACAGAG
CCCTACCGGACCCTCTCAGGGCATACGGCCAAGATTACCAGTGTGGCGTGGAGCCACATCATGATGGAA
GGCTGGTATCTGCTTCTATGATGGTACAGCCAGGTGTGGGATGCTCTCCGGGAAGAGCCCTGTGCAA
TTTCCGAGGACATCGAGGTGCGACTGCTTTGTGTGGCATGGTCTCCTTTGGATCCAGACTGCATCTATTCA
GGGGCAGATGACTTTTGTGTGCACAAGTGGCTCACTTCCATGCAAGATCATTCCCGGCTCCTCAAGGCA
AAAAAAGTATTGAATTGGAGAAAAACGGCTCTCTCAACCTAAGGCAAAGCCAAAAAGAAGAAAAAGCC
CACCTTGAGAACTCCTGTAAGCTGGAATCGATTGATGGAAATGAAGAAGAAAGCATGAAGGAGAATCA
GGACCTGTTGAGAATGGTGTGTCAGACCAAGAAGGGGAGGAGCAAGCACGGGAGCCGGAATTACCCTGTG
GCCTTGCTCCAGCGTTTCTAGAGAACCAGTTATCTGCACTCCAGTTTCTCAGGCTTTGAAAAGTCAA
AGTCACCATTAATAACAAAGTCATTTACTGAAAAGGAGCCACAAAAGAGAAGCCAGAAACCTTAATC
AAGAAGAGAAAAGCTCGTTCCTTCTCCCTGAGTACAAGCCTGGACCACAGATCCAAAGAGGAGCTTC
ATCAGGACTGTTGGTACTAGCAACTGCAAGCACTCCAGAGAGCTGAATGAAGATGTGTCTGCTGATGT
TGAGGAAAGATTTTATCTGGGGCTTTTACAGACAGGGCTACCCTGTATAGAATGATTGATATTGAAGGA
AAAGGTCACTTAGAAAATGGCCACCCTGAGTTATTTACCAGCTTATGCTTTGAAAAGGAGATCTCAAAG
GTGTTCTCCAGACTGCAGCAGAAAGAGGGGAGCTGACAGACAACCTTGTGGCTATGGCACCAGCAGCTGG
CTACCATGTGTGGCTATGGGCTGTGGAAGCTTTTGCCAAACAGCTGTGTTTTAGGATCAGTATGTCAAG
GCTGCTTCTCACCTACTTTCCATCCACAAAGTGTATGAAGCGGTGGAGCTGCTCAAGTCAAACCTTTT
ACAGGGAAGCTATTGCGATTGCCAAGGCCGGCTGCGCCCGGAGGACCCAGTCTGAAGGACTTGTACTCT
CAGCTGGGGAACCGTCTAGAAAAGAGATGGCCACTATGCTGTAGCTGCCAAATGCTATTTAGGGGCCACT
TGTGCTTATGATGCAGCCAAAGTTTTGGCCAAAAAGGGGATGCGGCATCACTTAGAACGCTGCAGAGT
TGGCTGCCATCGTAGGAGAGGATGAGTTGTCTGCTTCCCTGGCTCTCAGATGTGCCAAAGAGCTGCTTCT
GGCCAACAACCTGGGTGGGAGCCAGGAAGCCCTGCAGCTGCATGAAAGTCTACAGGGTGCAGAGTTGGT
TTTTGCCTTCTGGAGCTACTGTCCAGGCATCTGGAGGAAAAGCAGCTTTCAGAGGGCAAAAGCTCCTCCT
CTTACCACACTTGAACACGGGCACCGAAGGGCCTTTCGTGGAGAGGGTACTGCAGTGTGGAAGAGCAT
CTTCAGCCTTGACACCCCTGAGCAGTATCAGGAAGCCTTTCAGAAGCTGCAGAACATCAAGTACCCATCT
GCTACAAATAACACACCTGCCAAACAGCTCCTGCTTACATTTGCCATGACTTGACCCTGGCAGTGTGTA
GCCAACAGATGGCTCCTGGGACGAGGCTGTGCAGGCGCTCCTTCGGGCGGTGGTCCGGAGCTATGACTC
AGGGAGCTTACCATCATGCAGGAAGTGTACTCAGCCTTCTCCCTGATGGCTGTGACCACCTAAGAGAC
AAGTTGGGGGACCATCAATCCCCTGCCACACCAGCTTTCAAAGTTTGGAGGCCTTTTTTCTTTATGGGC
GTCTGTATGAATTCTGGTGGTCTCTCCAGACCTTGCCAAATTCAGTGTCTGGGTAAGGGCTGGTCA
CAGAACACTCTCTGTTGAGCCAAGCCAGCAGTTAGACTGCCAGCACTGAAGAAACGGACCCTGAAACT
TCTCAGCCAGAGCCAAACAGGCCTTCAAGTACTGAGACTCACAGAAGAAGGTGAGCGAATGCTGA
GTACTTTAAGGAGCTCTTTTCAGAAAAGCATGCCAGTCTCCAAAACACAGAGAATGTTGCTGAAGT
CCAAGAGACCTTGGCAGAAATGATCCGACAACACCAAAAGAGTCAACTCTGTAATCCACAGCAAATGGT
CCTGATAAGAATGAACCGAAGTGAAGCAGAGCAGCCCTCTGCAGTTCTCAGAGCCAGTGTAAAGAAG
AAAAAATGAGCCACTTCTCTGCTGAGTTAACCAAAAGGCTTACCAGGCAAATCAGAGAATGGCAAA
ATTTCTGAGAGCATTAAAGCCTGGCCCTTCCAGATGTGCTGGAGTGTGCCTCGTCTGCTTCTCATC
AGGTCCCCTTCTGCTGTCTGGCCAGGAAATGCAGCAGCAGGCCCAAGAGCTCCTTCAGAAATACG
GCAACACGAAAACCTTACAGAAGACTGCCAGACCTTCTGTATG

ACGCGTACGCGGCCGCTCGAGCAGAACTCATCTCAGAAGAGGATCTGGCAGCAAATGATATCCTGGATT
ACAAGGATGACGACGATAAGGTTTAA

Protein Sequence: >RC217516 representing NM_015465
 Red=Cloning site Green=Tags(s)

```

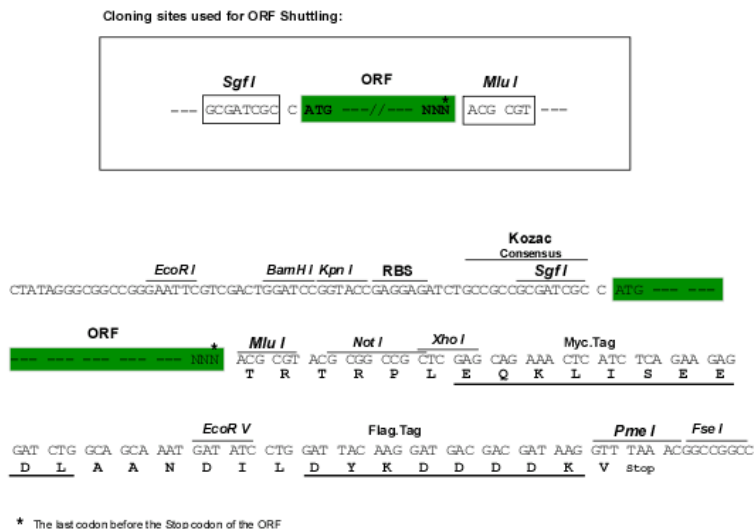
MGQEPRTLPPSPNWCARCSDAVPGGLFGFAARTSVFLVRVGPAGESPGTPPPFRVIGELVGHTERVSGF
TFSHHPGQYNLCATSSDDGTVKIWDVETKTVVTEHALHQHTISTLHWSRVKDLIVSGDEKGVVFCYWFN
RNDSQLHFIEPRTIFCLTCSPHHEDLVAIGYKDGIVVIIDISKKGEVIHRLRGHDDEIHSIAWCPLPGED
CLSINQEETSEEAEITNGNAVAQAPVTKGCYLATGSKDQTIIRIWSCSRGRGVMILKLPFLKRRGGIDPT
VKERLWLTLHWPSNQPTQLVSSCFGGELLQWDLTQSWRRKYTLFASSEGGQNSRIVFNLCPLQTEDDKQ
LLLSTSMDRDVKWDIATLECSWTLPSLGGFAYSLAFSSVDIGSLAIGVGDGMIRVWNTLSIKNNYDVKN
FWQGVKSKVTALCWHPTEKGCCLAFGTDDGKVLGYDTYSNKPPQISSTYHKKTVYTLAWGPPVPPMSLGG
GDRPSLALYSCGEGIVLQHNPKLSGEAFDINKLIRDNSIKYKLPVHTEISWKADGKIMALGNEDGSI
EIFQIPNLKLICTIQQHKL VNTISWHHEHGSQPELSYLMASGSNNAVIYVHNLKTVIESSPSPVTITE
PYRTLSGHTAKITVAVSPHHDGRLVSASYDGTAVQVDALREEPLCNFRGHRGRLLCVAWSPLDPDCIYS
GADDFCVHKWLTSMQDHSRPPQGGKKSIELEKRLSQPKAKPKKKKPTLRTPVKLESIDGNEEESMKENS
GPVENGVSQDEGEEQAREPELPCGLAPAVSREPVICTPVSSGFEKSKVTINNKVILLKKEPPKPKPETLI
KKRKARSLPLSTSLDHRKSEELHQDCLVLATAKHSRELNEDVSADVEERFHLGLFTDRATLYRMIDIEG
KGHLENGPEL FHQLMLWKGD LKGVLTAAERGELTDNLVAMAPAAGYHVWLWAVEAFKQLCFQDQYVK
AASHLLSIHKVYEAVELLKSNHFYREAIATAKARLRPEDPVLKDYLSWGTVLERDGHYAVAACYL GAT
CAYDAAKVLAKKGDAAASLRTAAELAAIIVGEDELSASLALRCAQELLLANNVWGAQALQLHESLQGRV
FCLLELLSRHLEEKQLSEGKSSSYHTWNTGTGEGPFVERVTAVWKSIFSLDTPQYQEAQKLNQIKYPS
ATNNTPAKQLLLHICHDLTAVLSQQMASWDEAVQALLRAVRSYDSGSFTIMQEVYSAFLPDGCDHLRD
KLGDHQSPATPAFKSLEAFFLYGRLYEFWWSLSRPCNSSVWVRAGHRTL SVEPSQLDASTEETDPET
SQPEPNRPELDRLETEGERMLSTFKELFSEKHASLQNSQRTVAEVQETLAEMIRQHQSQ LCKSTANG
PDKNEPEVEAEQPLCSSQSQCKEENEPLSLPELTKRLTEANQMAKFPESIKAWPFPDVLCECLVLLLI
RSHFPGCLAQEMQQAQELLQKYGNTKYRRHCQTF CM
  
```

TRTRPLEQKLISEEDLAANDILDYKDDDDKV

Chromatograms: https://cdn.origene.com/chromatograms/mk8015_e01.zip

Restriction Sites: SgfI-MluI

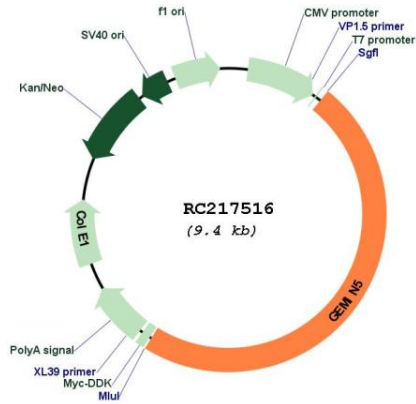
Cloning Scheme:



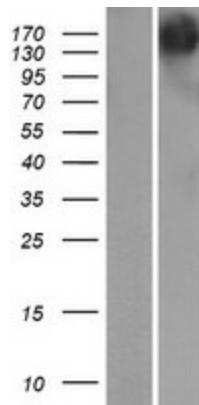
ACCN: NM_015465

ORF Size:	4524 bp
OTI Disclaimer:	The molecular sequence of this clone aligns with the gene accession number as a point of reference only. However, individual transcript sequences of the same gene can differ through naturally occurring variations (e.g. polymorphisms), each with its own valid existence. This clone is substantially in agreement with the reference, but a complete review of all prevailing variants is recommended prior to use. More info
OTI Annotation:	This clone was engineered to express the complete ORF with an expression tag. Expression varies depending on the nature of the gene.
Components:	The ORF clone is ion-exchange column purified and shipped in a 2D barcoded Matrix tube containing 10ug of transfection-ready, dried plasmid DNA (reconstitute with 100 ul of water).
Reconstitution Method:	<ol style="list-style-type: none">1. Centrifuge at 5,000xg for 5min.2. Carefully open the tube and add 100ul of sterile water to dissolve the DNA.3. Close the tube and incubate for 10 minutes at room temperature.4. Briefly vortex the tube and then do a quick spin (less than 5000xg) to concentrate the liquid at the bottom.5. Store the suspended plasmid at -20°C. The DNA is stable for at least one year from date of shipping when stored at -20°C.
RefSeq:	NM_015465.3
RefSeq Size:	4527 bp
RefSeq ORF:	4527 bp
Locus ID:	25929
UniProt ID:	Q8TEQ6
Cytogenetics:	5q33.2
Domains:	WD40
Protein Families:	Druggable Genome
MW:	168.4 kDa
Gene Summary:	This gene encodes a WD repeat protein that is a component of the survival of motor neurons (SMN) complex. The SMN complex plays a critical role in mRNA splicing through the assembly of spliceosomal small nuclear ribonucleoproteins (snRNPs), and may also mediate the assembly and transport of other classes of ribonucleoproteins. The encoded protein is the snRNA-binding component of the SMN complex. Dysregulation of this gene may play a role in alternative mRNA splicing and tumor cell motility. Alternatively spliced transcript variants encoding multiple isoforms have been observed for this gene. [provided by RefSeq, Nov 2011]

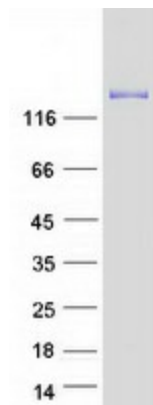
Product images:



Circular map for RC217516



Western blot validation of overexpression lysate (Cat# [LY414520]) using anti-DDK antibody (Cat# [TA50011-100]). Left: Cell lysates from untransfected HEK293T cells; Right: Cell lysates from HEK293T cells transfected with RC217516 using transfection reagent MegaTran 2.0 (Cat# [TT210002]).



Coomassie blue staining of purified GEMIN5 protein (Cat# [TP317516]). The protein was produced from HEK293T cells transfected with GEMIN5 cDNA clone (Cat# RC217516) using MegaTran 2.0 (Cat# [TT210002]).