

Product datasheet for RC217513

MTCP1 (NM_001018025) Human Tagged ORF Clone

Product data:

Product Type:	Expression Plasmids
Product Name:	MTCP1 (NM_001018025) Human Tagged ORF Clone
Tag:	Myc-DDK
Symbol:	MTCP1
Synonyms:	p8MTCP1; P13MTCP1; TCL1C
Mammalian Cell Selection:	Neomycin
Vector:	pCMV6-Entry (PS100001)
E. coli Selection:	Kanamycin (25 ug/mL)
ORF Nucleotide Sequence:	<p>>RC217513 representing NM_001018025</p> <p>Red=Cloning site Blue=ORF Green=Tags(s)</p> <p>TTTGTAAATACGACTCACTATAGGGCGGCCGGAATTCGTCGACTGGATCCGGTACCGAGGAGATCTGCCGCCCGATCGCC</p> <p>ATGGCAGGAGAGGATGTGGGGCTCCACCCGATCACCTCTGGGTTACCAAGAGGGTATCTACCGCGACG AATACCAGCGCACGTGGGTGGCCGTCGTGGAAGAGGAGACGAGTTTCTAAGGGCACGAGTCCAGCAAAT TCAGGTTCCCTTAGGTGACGCAGCTAGGCCAAGTCACCTTCTTACCTCCCAGCTACCTCTCATGTGGCAA CTCTACCCGGAGGAGCGCTACATGGATAACAACTCTCGCTTGTGGCAGATACAGCATCATTTAATGGTCA GGGGAGTACAGGAGCTGTTGCTTAAGCTTTGCCTGATGAC</p> <p>ACGCGTACGCGGCCGCTCGAGCAGAACTCATCTCAGAAGAGGATCTGGCAGCAAATGATATCCTGGATT ACAAGGATGACGACGATAAGGTTTAA</p>
Protein Sequence:	<p>>RC217513 representing NM_001018025</p> <p>Red=Cloning site Green=Tags(s)</p> <p>MAGEDVGAAPPDHLWVHQEGIYRDEYQRTWVAVVEEETSFLRARVQQIQVPLGDAARPSHLLTSQLPLMWQ LYPEERYMDNNSRLWQIQHLMVRGVQELLLKLLPDD</p> <p>TRTRPLEQKLISEEDLAANDILDYKDDDDKV</p>
Chromatograms:	https://cdn.origene.com/chromatograms/mg4037_b06.zip
Restriction Sites:	SgfI-MluI


[View online »](#)

Cloning Scheme:


ACCN: NM_001018025

ORF Size: 321 bp

OTI Disclaimer: The molecular sequence of this clone aligns with the gene accession number as a point of reference only. However, individual transcript sequences of the same gene can differ through naturally occurring variations (e.g. polymorphisms), each with its own valid existence. This clone is substantially in agreement with the reference, but a complete review of all prevailing variants is recommended prior to use. [More info](#)

OTI Annotation: This clone was engineered to express the complete ORF with an expression tag. Expression varies depending on the nature of the gene.

Components: The ORF clone is ion-exchange column purified and shipped in a 2D barcoded Matrix tube containing 10ug of transfection-ready, dried plasmid DNA (reconstitute with 100 ul of water).

Reconstitution Method:

1. Centrifuge at 5,000xg for 5min.
2. Carefully open the tube and add 100ul of sterile water to dissolve the DNA.
3. Close the tube and incubate for 10 minutes at room temperature.
4. Briefly vortex the tube and then do a quick spin (less than 5000xg) to concentrate the liquid at the bottom.
5. Store the suspended plasmid at -20°C. The DNA is stable for at least one year from date of shipping when stored at -20°C.

Note: Plasmids are not sterile. For experiments where strict sterility is required, filtration with 0.22um filter is required.

RefSeq: [NM_001018025.4](#)

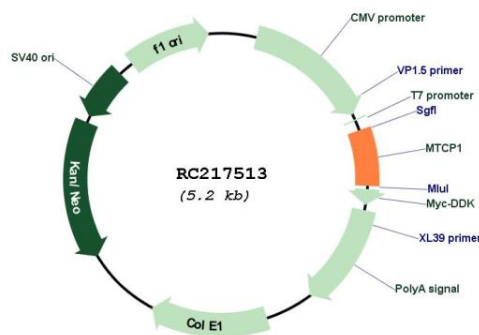
RefSeq Size: 1943 bp

RefSeq ORF: 324 bp

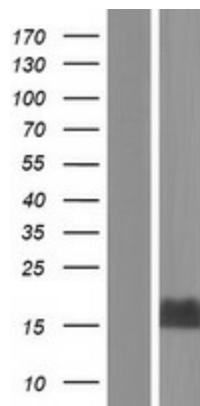
Locus ID: 4515
UniProt ID: [P56278](#)
Cytogenetics: Xq28
MW: 12.4 kDa

Gene Summary: This gene was identified by involvement in some t(X;14) translocations associated with mature T-cell proliferations. This region has a complex gene structure, with a common promoter and 5' exon spliced to two different sets of 3' exons that encode two different proteins. This gene represents the upstream 13 kDa protein that is a member of the TCL1 family. This protein may be involved in leukemogenesis. [provided by RefSeq, Mar 2009]

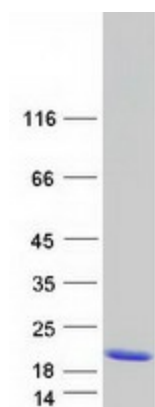
Product images:



Circular map for RC217513



Western blot validation of overexpression lysate (Cat# [LY422698]) using anti-DDK antibody (Cat# [TA50011-100]). Left: Cell lysates from untransfected HEK293T cells; Right: Cell lysates from HEK293T cells transfected with RC217513 using transfection reagent MegaTran 2.0 (Cat# [TT210002]).



Coomassie blue staining of purified MTCP1 protein (Cat# [TP317513]). The protein was produced from HEK293T cells transfected with MTCP1 cDNA clone (Cat# RC217513) using MegaTran 2.0 (Cat# [TT210002]).