

Product datasheet for RC217501

GLIPR2 (NM_022343) Human Tagged ORF Clone

Product data:

Product Type:	Expression Plasmids
Product Name:	GLIPR2 (NM_022343) Human Tagged ORF Clone
Tag:	Myc-DDK
Symbol:	GLIPR2
Synonyms:	C9orf19; GAPR-1; GAPR1
Mammalian Cell Selection:	Neomycin
Vector:	pCMV6-Entry (PS100001)
E. coli Selection:	Kanamycin (25 ug/mL)
ORF Nucleotide Sequence:	>RC217501 representing NM_022343 Red=Cloning site Blue=ORF Green=Tags(s)

TTTTGTAATACGACTCACTATAGGGCGGCCGGAATTCGTCGACTGGATCCGGTACCGAGGAGATCTGCC
GCC**CGATCGCC**

ATGGGCAAGTCAGCTTCCAACAGTTTCATAATGAGGTCTGAAGGCCCAATGAGTACCGGCAGAAGC
ACGGCGTCCCCCACTGAAGCTCTGCAAGAACCTCAACCGGGAGGCTCAACAGTATTCTGAGGCCCTGGC
CAGCACGAGGATCCTCAAGCACAGCCGGAGTCCAGCCGTGGCCAGTGTGGGAGAACCTTGCATGGCA
TCCTATGATCAGACAGGAAAGGAGGTGGCTGATAGATGGTACAGTGAAATCAAGAACTATAACTTCAGC
AGCCTGGCTTCACCTCGGGGACTGGACACTTCACGCCATGGTATGGAAGAACCAAGAAGATGGCGT
GGGGAAGGCGTCCGCAAGTGACGGGTCTCCTTTGTGGTGGCCAGATACTCCCAGCGGGGAATGTTGTC
AATGAGGGCTTCTCGAAGAAAACGTCCTGCCCGCAAGAAG

ACGCGTACGCGGCCGCTCGAGCAGAACTCATCTCAGAAGAGGATCTGGCAGCAAATGATATCCTGGATT
ACAAGGATGACGACGATAAGGTTTAA

Protein Sequence:	>RC217501 representing NM_022343 Red=Cloning site Green=Tags(s)
-------------------	--

MGKSASKQFHNEVLKAHNEYRQKHGVPPLKLCKNLNREAQQYSEALASTRILKHSPSSRGQCGENLAWA
SYDQTGKEVADRWYSEIKNYNFQQPGFTSGTGHTAMVWKNKKMGVKGASASDGSFVVFVARYFPAGNVV
NEGFEEENVLPKK

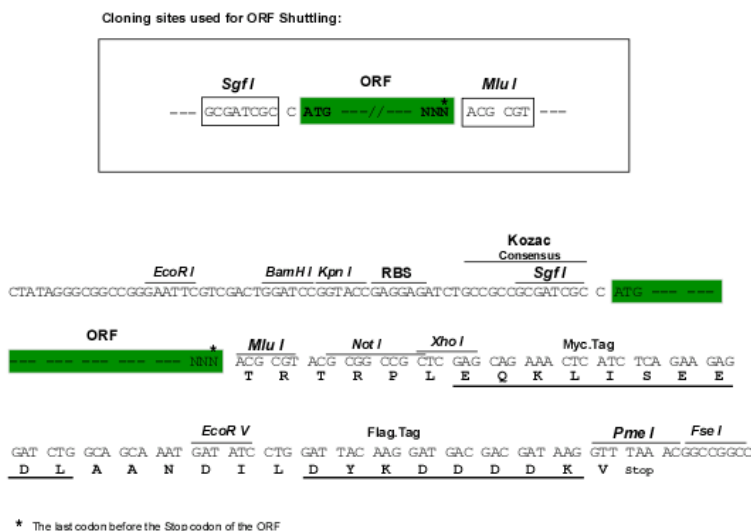
TRTRPLEQKLISEEDLAANDILDYKDDDDKV

Chromatograms:	https://cdn.origene.com/chromatograms/mk6483_c03.zip
----------------	---


[View online »](#)

Restriction Sites: Sgfl-MluI

Cloning Scheme:



ACCN: NM_022343

ORF Size: 462 bp

OTI Disclaimer: The molecular sequence of this clone aligns with the gene accession number as a point of reference only. However, individual transcript sequences of the same gene can differ through naturally occurring variations (e.g. polymorphisms), each with its own valid existence. This clone is substantially in agreement with the reference, but a complete review of all prevailing variants is recommended prior to use. [More info](#)

OTI Annotation: This clone was engineered to express the complete ORF with an expression tag. Expression varies depending on the nature of the gene.

Components: The ORF clone is ion-exchange column purified and shipped in a 2D barcoded Matrix tube containing 10ug of transfection-ready, dried plasmid DNA (reconstitute with 100 ul of water).

Reconstitution Method:

1. Centrifuge at 5,000xg for 5min.
2. Carefully open the tube and add 100ul of sterile water to dissolve the DNA.
3. Close the tube and incubate for 10 minutes at room temperature.
4. Briefly vortex the tube and then do a quick spin (less than 5000xg) to concentrate the liquid at the bottom.
5. Store the suspended plasmid at -20°C. The DNA is stable for at least one year from date of shipping when stored at -20°C.

Note: Plasmids are not sterile. For experiments where strict sterility is required, filtration with 0.22um filter is required.

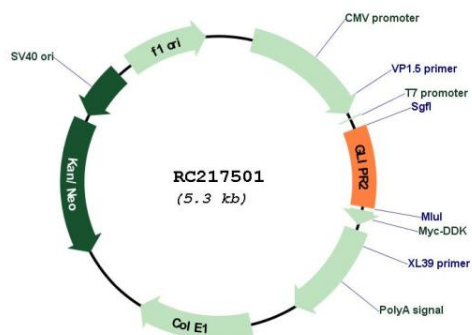
RefSeq: [NM_022343.4](#)

RefSeq Size: 1900 bp

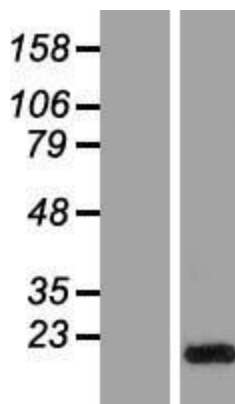
RefSeq ORF: 465 bp

Locus ID: 152007
UniProt ID: [Q9H4G4](#)
Cytogenetics: 9p13.3
Domains: SCP
MW: 17 kDa

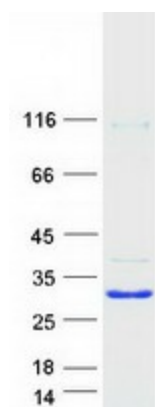
Product images:



Circular map for RC217501



Western blot validation of overexpression lysate (Cat# [LY411714]) using anti-DDK antibody (Cat# [TA50011-100]). Left: Cell lysates from untransfected HEK293T cells; Right: Cell lysates from HEK293T cells transfected with RC217501 using transfection reagent MegaTran 2.0 (Cat# [TT210002]).



Coomassie blue staining of purified GLIPR2 protein (Cat# [TP317501]). The protein was produced from HEK293T cells transfected with GLIPR2 cDNA clone (Cat# RC217501) using MegaTran 2.0 (Cat# [TT210002]).