

Product datasheet for **RC217491**

IQCJ (NM_001042706) Human Tagged ORF Clone

Product data:

Product Type: Expression Plasmids
Product Name: IQCJ (NM_001042706) Human Tagged ORF Clone
Tag: Myc-DDK
Symbol: IQCJ
Mammalian Cell Selection: Neomycin
Vector: pCMV6-Entry (PS100001)
E. coli Selection: Kanamycin (25 ug/mL)
ORF Nucleotide Sequence: >RC217491 representing NM_001042706
Red=Cloning site Blue=ORF Green=Tags(s)

TTTTGTAATACGACTCACTATAGGGCGGCCGGAATTCGTCGACTGGATCCGGTACCGAGGAGATCTGCC
GCC**CGATCGCC**

ATGCGTCTGGAAGAACTGAAAAGATTGCAGAATCCTCTAGAACAAGTTAATGATGGAAAATATTCATTTG
AAAATCACCAGCTGGCCATGGATGCAGAGAATAATATTGAAAAGTATCCCCTCAATCTACAGCCCTTGA
ATCAAAGTGAAAATCATTACAGCGAGCATGGCGAGAGTACCTGCAGCGGCAGGAGCCCTGGGGAAGAGG
AGCCCGTCCCCACCCTCTGTCTCCTCAGAGAAGCTGAGCAGCTCTGTGAGCATGAACACCTTCTCCGACA
GCAGCACACCCGTGAGTGCATGTTTCTTTTCTATGTCCTGACTTGACATTCAAC

ACGCGTACGCGGCCGCTCGAGCAGAACTCATCTCAGAAGAGGATCTGGCAGCAAATGATATCCTGGATT
ACAAGGATGACGACGATAAGGTTTAA

Protein Sequence: >RC217491 representing NM_001042706
Red=Cloning site Green=Tags(s)

MRLEELKRLQNPQVNDGKYSFENHQLAMDAENNIKYPLNLQPLESKVKIIQRAWREYLQRQEPLGKR
SPSPPSVSSEKLSSSVSMNTFSDSSTPVSVMFLFLCPDLTFN

TRTRPLEQKLISEEDLAANDILDYKDDDDKV

Chromatograms: https://cdn.origene.com/chromatograms/mk8015_c01.zip

Restriction Sites: SgfI-MluI



[View online »](#)

Cloning Scheme:


ACCN: NM_001042706

ORF Size: 336 bp

OTI Disclaimer: The molecular sequence of this clone aligns with the gene accession number as a point of reference only. However, individual transcript sequences of the same gene can differ through naturally occurring variations (e.g. polymorphisms), each with its own valid existence. This clone is substantially in agreement with the reference, but a complete review of all prevailing variants is recommended prior to use. [More info](#)

OTI Annotation: This clone was engineered to express the complete ORF with an expression tag. Expression varies depending on the nature of the gene.

Components: The ORF clone is ion-exchange column purified and shipped in a 2D barcoded Matrix tube containing 10ug of transfection-ready, dried plasmid DNA (reconstitute with 100 ul of water).

- Reconstitution Method:**
1. Centrifuge at 5,000xg for 5min.
 2. Carefully open the tube and add 100ul of sterile water to dissolve the DNA.
 3. Close the tube and incubate for 10 minutes at room temperature.
 4. Briefly vortex the tube and then do a quick spin (less than 5000xg) to concentrate the liquid at the bottom.
 5. Store the suspended plasmid at -20°C. The DNA is stable for at least one year from date of shipping when stored at -20°C.

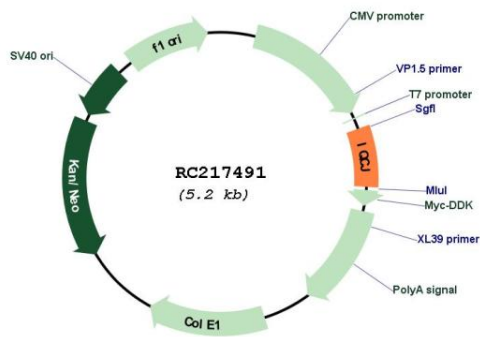
RefSeq: [NM_001042706.3](#)

RefSeq Size: 1460 bp

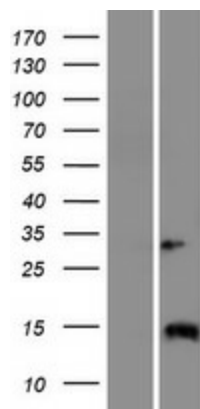
RefSeq ORF: 339 bp

Locus ID: 654502
UniProt ID: [Q1A5X6](#)
Cytogenetics: 3q25.32
MW: 12.7 kDa

Product images:



Circular map for RC217491



Western blot validation of overexpression lysate (Cat# [LY421034]) using anti-DDK antibody (Cat# [TA50011-100]). Left: Cell lysates from untransfected HEK293T cells; Right: Cell lysates from HEK293T cells transfected with RC217491 using transfection reagent MegaTran 2.0 (Cat# [TT210002]).