

Product datasheet for RC217488

SPI1 (NM_001080547) Human Tagged ORF Clone

Product data:

Product Type:	Expression Plasmids
Product Name:	SPI1 (NM_001080547) Human Tagged ORF Clone
Tag:	Myc-DDK
Symbol:	SPI1
Synonyms:	OF; PU.1; SFPI1; SPI-1; SPI-A
Mammalian Cell Selection:	Neomycin
Vector:	pCMV6-Entry (PS100001)
E. coli Selection:	Kanamycin (25 ug/mL)
ORF Nucleotide Sequence:	>RC217488 representing NM_001080547 Red=Cloning site Blue=ORF Green=Tags(s)

TTTTGTAATACGACTCACTATAGGGCGCCGGGAATTCGTCGACTGGATCCGGTACCGAGGAGATCTGCC
GCC**CGGATCGCC**

ATGTTACAGGCGTGCAAATGGAAGGGTTCCCTCGTCCCCCTCAGCCATCAGAAGACCTGGTGCCT
ATGACACGGATCTATACCAACGCCAAACGCACGAGTATTACCCCTATCTCAGCAGTGATGGGAGAGCCA
TAGCGACCATTACTGGGACTTCCACCCACCACGTGCACAGCGAGTTCGAGAGCTTCGCCGAGAACAAC
TTCACGGAGCTCCAGAGCGTGCAGCCCCGCAGCTGCAGCAGCTCTACCGCCACATGGAGCTGGAGCAGA
TGCACGTCTCGATACCCCATGGTGCCACCCATCCCAGTCTTGCCACCAGGTCTCTACCTGCCCGG
GATGTGCCTCCAGTACCCATCCCTGTCCCCAGCCAGCCAGCTCAGATGAGGAGGAGGGCGAGCGCGAG
AGCCCCCACTGGAGGTGTCTGACGCGCAGGCGGATGGCCTGGAGCCCGGCCTGGGCTCCTGCCTGGGG
AGACAGGCAGCAAGAAGAAGATCCGCCTGTACCAAGTTCCTGTTGGACCTGCTCCGAGCGGCGACATGAA
GGACAGCATCTGGTGGGTGGACAAGGACAAGGGCACCTTCCAGTTCTCGTCCAAGCACAAGGAGGCGCTG
GCGCACCGCTGGGGCATCCAGAAGGGCAACCGCAAGAAGATGACCTACCAGAAGATGGCGCGCGCTGC
GCAACTACGGCAAGACGGGCGAGGTCAAGAAGGTGAAGAAGAAGTCACTACCAGTTACAGCGCGAAGT
GCTGGGCCGCGGGGCTGGCCGAGCGGCCACCCGCCAC

ACGCGTACGCGGCCGCTCGAGCAGAAACTCATCTCAGAAGAGGATCTGGCAGCAAATGATATCCTGGATT
ACAAGGATGACGACGATAAGGTTTAA



[View online »](#)

Protein Sequence: >RC217488 representing NM_001080547
Red=Cloning site Green=Tags(s)

MLQACKMEGFPLVPPQSEDLPYDSDL YQRQTHEYYPYLSSDGESHSDHYWDFHPPHHVHSEFESFAENN
 FTELQSVQPPQLQLYRHMELQMHVLDTPMVPHPHSLGHQVSYLPRMCLQYPSLSPAQPSSDEEGERQ
 SPPLEVSDGEADGLEPGPLLPGETGSKKKIRLYQFLDLLRSGDMKDSIWWVDKDKGTFFSSKHKEAL
 AHRWGIQKGNRKKMTYQKMARALRNYGKTGEVKKVKKKLYQFSGEVLGRGGLAERRHPPH

TRTRPLEQKLISEEDLAANDILDYKDDDDKV

Chromatograms: https://cdn.origene.com/chromatograms/mk8015_a10.zip

Restriction Sites: SgfI-MluI

Cloning Scheme:



ACCN: NM_001080547

ORF Size: 813 bp

OTI Disclaimer: The molecular sequence of this clone aligns with the gene accession number as a point of reference only. However, individual transcript sequences of the same gene can differ through naturally occurring variations (e.g. polymorphisms), each with its own valid existence. This clone is substantially in agreement with the reference, but a complete review of all prevailing variants is recommended prior to use. [More info](#)

OTI Annotation: This clone was engineered to express the complete ORF with an expression tag. Expression varies depending on the nature of the gene.

Components: The ORF clone is ion-exchange column purified and shipped in a 2D barcoded Matrix tube containing 10ug of transfection-ready, dried plasmid DNA (reconstitute with 100 ul of water).

Reconstitution Method:

1. Centrifuge at 5,000xg for 5min.
2. Carefully open the tube and add 100ul of sterile water to dissolve the DNA.
3. Close the tube and incubate for 10 minutes at room temperature.
4. Briefly vortex the tube and then do a quick spin (less than 5000xg) to concentrate the liquid at the bottom.
5. Store the suspended plasmid at -20°C. The DNA is stable for at least one year from date of shipping when stored at -20°C.

RefSeq: [NM_001080547.2](#)

RefSeq Size: 1426 bp

RefSeq ORF: 816 bp

Locus ID: 6688

UniProt ID: [P17947](#)

Cytogenetics: 11p11.2

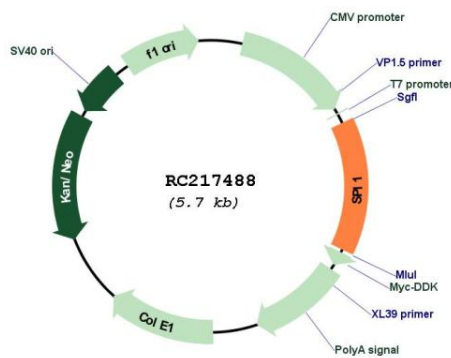
Protein Families: Transcription Factors

Protein Pathways: Acute myeloid leukemia, Pathways in cancer

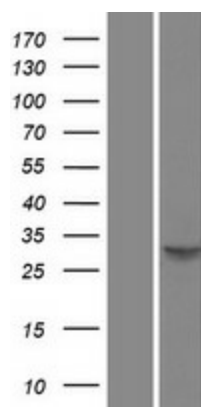
MW: 31 kDa

Gene Summary: This gene encodes an ETS-domain transcription factor that activates gene expression during myeloid and B-lymphoid cell development. The nuclear protein binds to a purine-rich sequence known as the PU-box found near the promoters of target genes, and regulates their expression in coordination with other transcription factors and cofactors. The protein can also regulate alternative splicing of target genes. Multiple transcript variants encoding different isoforms have been found for this gene. [provided by RefSeq, Jul 2008]

Product images:



Circular map for RC217488



Western blot validation of overexpression lysate (Cat# [LY421101]) using anti-DDK antibody (Cat# [TA50011-100]). Left: Cell lysates from untransfected HEK293T cells; Right: Cell lysates from HEK293T cells transfected with RC217488 using transfection reagent MegaTran 2.0 (Cat# [TT210002]).