

Product datasheet for RC217487

FISH (SH3PXD2A) (NM_014631) Human Tagged ORF Clone

Product data:

Product Type:	Expression Plasmids
Product Name:	FISH (SH3PXD2A) (NM_014631) Human Tagged ORF Clone
Tag:	Myc-DDK
Symbol:	FISH
Synonyms:	FISH; SH3MD1; TKS5
Mammalian Cell Selection:	Neomycin
Vector:	pCMV6-Entry (PS100001)
E. coli Selection:	Kanamycin (25 ug/mL)
ORF Nucleotide Sequence:	>RC217487 representing NM_014631 Red=Cloning site Blue=ORF Green=Tags(s)

TTTTGTAATACGACTCACTATAGGGCGGCCGGAATTCGTCGACTGGATCCGGTACCGAGGAGATCTGCC
GCC**CGATCGCC**

ATGCTCGCTACTGCGTGCAGGATGCCACCGTGGTGGACGTGGAGAAGCGGAGGAACCCCTCCAAGCACT
ACGTATACATAATCAATGTGACCTGGTCTGACTCCACCTCCAGACTATCTACCGGAGGTACAGCAAGTT
CTTTGACCTGCAGATGCAGCTTTTGGATAAGTTTCCCATTGAAGGTGGCCAGAAGGACCCCAAGCAAAGG
ATCATCCCCTTCTCCAGGCAAGATCCTTCCGCAGAAGCCACATCCGGGACGTAGCTGTGAAGAGAC
TGAAGCCCATCGATGAATACTGCCGGGCACTTGTCCGGCTGCCCCACATCTCACAGTGTGACGAAGT
CTTCCGGTTCTTCGAGGCTCGACCCGAGGATGTCAACCTCCAAAAGAGGACTATGGCAGTTCCAAAGAGG
AAATCAGTGTGGCTGTCCAGCTGGGCTGAGTCGCCAAGAAGGACGTGACAGGTGCCGACGCCACCGCCG
AGCCCATGATCCTGGAACAGTACGTGGTGGTGTCCAATAAAGAAGCAGGAGAAGTCCGGAGCTGAGCCT
CCAGGCCGGGGAGGTGGTGGATGTATCGAGAAGAACGAGAGCGGCTGGTGGTTCGTGAGCACTTCTGAG
GAGCAGGGCTGGGTCCCTGCCACCTACCTGGAGGCCAGAATGGTACTCGGGATGACTCCGACATCAACA
CCTCTAAGACTGGAGAAGAGGAGAAGTATGTCACCGTGCAGCCTTACACCAGCCAAGGAAGGACGAGAT
TGGCTTTGAGAAGGGCGTCACAGTGGAGGTGATCCGGAAGAATCTGGAAGGCTGGTGGTATATCAGATAC
CTGGGCAAAGAGGGCTGGGCGCCAGCATCCTACCTGAAGAAGGCAAGGATGACCTGCCAACCCGGAAGA
AGAACCTGGCCGGCCAGTGGAGATCATTGGGAACATCATGGAGATCAGCAACCTGCTGAACAAGAAGGC
GTCTGGGACAAGGAACTCCACCAGCCGAAGGCGAGGGCCATGAGGCCCCATTGCCAAGAAGGAGATC
AGCCTGCCATCCTCTGCAATGCCTCCAATGGCAGTGGCGTGGCGTTCTGACAGGACTGTCTCCAGGC
TGGCCAGGGCTCTCCAGCTGTGGCCAGGATTGCCCTCAGCGGGCCAGATCAGCTCCCCGAACCTACG
GACAAGACCTCCACCACGCAGAGAATCCAGCCTGGGGTTCCAAGTCCAAAGCCACCAGAGCCCCCTTCT
GTTGAGGTGGAGTACTACACCATTGCCGAATCCAGTCGTGCATTTCCGATGGCATCAGCTTTCGGGGT
GACAGAAGGCAGAGGTCATTGATAAGAAGTCCAGTGGCTGGTGGTACGTGCAGATCGGTGAGAAGGAGG
CTGGGCCCCGCATCATACATCGATAAGCGCAAGAAGCCAACTGAGCCGCCGACAAGCAGCTGACC



[View online »](#)

CGGCCAAGGTGCCCCGCCAGCACCCCCAGCAAGCCAAAGGAGCCGAGGAGGCCCTACGGGGCCA
 GTGAGAGCCAGGACTCCCCGCGGAAGCTCAAGTATGAGGAGCCTGAGTATGACATCCCTGCATTCGGCTT
 TGACTCAGAGCCTGAGCTGAGCGAGGAGCCCGTGGAGGACAGAGCCTCAGGGGAGAGGGCCCTGCCAG
 CCCCACCGGCCCTCGCCGGCCTTTCTCTGCAGCGGGCCCGCTTCAAGGTGGGTGAGTCTCAGAGGATG
 TGGCCCTGGAAGAGGAGACCATCTATGAGAATGAGGGCTCCGGCCATATGCAGAGGACACCCTGTCAGC
 CAGAGGCTCCTCCGGGGACAGCAGCTCCCAGGCAGCTCCTCGTGTCCCTGACCAGGAAAAATCCCC
 AAATCAGGCTCCCCAAGTCATCATCACTCTAAAGCTCAAGCAGAGAAGAATGCCAGGAGCAAAATGG
 GGAAGAACCCTCCTCAGCCTCCTTTCCCTCATCCATCACCATCAACACCCTTGTCTCCTCCTCTC
 CTCTCCTCCTCTTCTGTCCAAAACAGTGGCGACCTGAAGCCCCGCTCTGCTTCGGACGCAGGCATC
 CGCGGCACTCCCAAGGTGAGGGCAAAGAAGGATGCTGATGCGAACGCTGGGCTGACCTCCTGTCCCCGGG
 CCAAGCCATCGGTCCGGCCCAAGCATTCTAAACCGAGCAGAGTCGAGAGCCAAAGAGAAGATGGACAT
 CAGCACTTTACGGCGCCAGCTGAGACCCACAGGCCAGCTCCGTGGAGGGCTCAAGGGCTCCAAGAGTGA
 GATTTCGGAGTGCSCCGCAGACGGCTCCGAGGCTCCAGTGAAGGGTCTAGGAGAAGCTCATCCGACC
 TCATACCCTCCAGCCACCCTCCCCATGTCCACCAAGAAGGAATGGGAAGGGCCAGCCACCTCGTA
 CATGACATGCAGCGCCTACCAGAAGTCCAGGACTCGGAGATCAGCTTCCCCGCGGGCTGGAGGTGCAG
 GTGCTGGAGAAGCAGGAGAGCGGGTGGTGGTATGTGAGGTTTGGGAGCTGGAGGGCTGGCCCCCTCCC
 ACTATTTGGTGTGGATGAGAACGAGCAACCTGACCCCTCTGGCAAGAGCTGGACACAGTGCCCGCCAA
 GGGCAGGCAGAACGAAGGCAAAATCAGACAGCCTGGAGAAGATCGAGAGGCGCGTCCAAGCACTGAACACC
 GTCAACCAGAGCAAGAAGGCCACGCCCCCATCCCCTCCAACCTCCCGGGGGCTTCGGCAAGACCTCAG
 GCACTCCAGCGGTGAAGATGAGGAACGGAGTGGCGAGGTGGCGGTGAGGCCAGTCCGGTGTGTGTGTC
 CCCGCCACCAAGGACAACAACCTGTCTGCGCCCTGCGGAGGAATGAGTCACTCAGGCCACTGATGGC
 CTCGAGGCGTCCGACGGAACCTCCTTTAGCACTGCTCGCTCCGCTGCCGCCAGGCAAGGGCCGCC
 TGCCGAAACGGGCTGCCAGCCAGGTTTCAAGTCACTCAGCCCTACTGCCCGCCAGCCAAAGCAGCATACCCG
 GTCCCCTGTGCGCCCAAGCCATCGAGAAGTCTCAGTTCATCCACAATAACCTCAAAGATGTGTACGTC
 TCTATCGCAGACTACGAGGGGATGAGGAGACAGCAGGCTTCCAGGAGGGGTGTCCATGGAGGTTCTGG
 AGAGGAACCTAATGGCTGGTGGTACTGCCAGATCCTGGATGGTGAAGCCCTTCAAAGCTGGGTGCC
 TTCCAACCTTACCTGAGAAAAAGAAC

ACGCGTACGCGGCCGCTCGAGCAGAACTCATCTCAGAAGAGGATCTGGCAGCAATGATATCCTGGATT
 ACAAGGATGACGACGATAAGGTTTAA

Protein Sequence:

>RC217487 representing NM_014631
 Red=Cloning site Green=Tags(s)

MLAYCVQDATVVDVEKRRNPSKHVYVIINVTWSDSTSQTIYRRYSKFFDLQMQLLDKFPIEGGQKDPKQR
 IIPFLPGKILFRRSHIRDVAVKRLKPIDEYCRALVRLPPHISQCDEVFRFFEARPEDVNPPKEDYGSKR
 KSVWLSSWAESPCKDVTGADATAEPMILEQYVVVSNYKKQENSELSLQAGEVVDVIEKNEGWWFVSTSE
 EQGWVPATYLEAQNGTRDSDINTSKTGEEKYVTVQPYTSQSKDEIGFEKGVTVVEVIRKNLEGWYIYR
 LGKEGWAPASYLKKAKDDLPTKKNLAGPVEIIGNIMEISNLLNKKASGDKETPPAEGEGHEAPIAKKEI
 SLPILCNASNGSAVGVDPRTVSRLAQGSAPAVARIAPQRAQISSPNLRTPPPPRESSSLGFQLPKPPEPPS
 VEVEYYTIAEFQSCISDGISFRGGQKAEVIDKNSGGWVYVQIGKEGWAPASYIDKRKPNLSRRTSTLT
 RPKVPPPAPPSKPKAEEGPTGASESQDSPRKLKYEPEYDIPAFGFDSEPELSEEPVEDRASGERRPAQ
 PHRPSPASSLQARFKVGESEDDVALEETIYENEGFRPYAEDTLSARGSSGSDSPGSSSLSLTRKNSP
 KSGSPKSSLLKLAEKNAQAEMGNHSSASFSSSITINTCCSSSSSSSSSLKTSGLDKPRASDAGI
 RGTpkVRAKKDADANAGLTSCPRAKPSVRPKPFLNRAESQSQEKMDISTLRRQLRPTGQLRGGLKGSKSE
 DSELPPQTASEAPSEGSRRSSDLITLPAATPPCPTKKEWEGPATSYMTCSAYQKVQDSEISFPAGVEVQ
 VLEKQESGWVYVRFGELEGWAPSHYLVLDENEQPDPGKELDTVPAKGRQNEGKSDSLEKIERRVQALNT
 VNQSKKATPPIPSKPPGGFGKTSGTPAVKMRNGVRQVAVRPQSVFVSPPKDNNLSCALRRNESLATDGL
 LRGVRRNSSFSTARSAAEAKGRLAERAASQGSDSPLLPQRNSIPVSPVRPKPIEKSQFIHNNLKDVVY
 SIADYEGDEETAGFQEGVSMEVLERPNPNGWYQCILDGKVPFKGWVPSNYLEKKN

TRTRPLEQKLISEEDLAANDILDYKDDDDKV

Reconstitution Method:

1. Centrifuge at 5,000xg for 5min.
2. Carefully open the tube and add 100ul of sterile water to dissolve the DNA.
3. Close the tube and incubate for 10 minutes at room temperature.
4. Briefly vortex the tube and then do a quick spin (less than 5000xg) to concentrate the liquid at the bottom.
5. Store the suspended plasmid at -20°C. The DNA is stable for at least one year from date of shipping when stored at -20°C.

RefSeq: [NM_014631.2](#), [NP_055446.2](#)

RefSeq Size: 11264 bp

RefSeq ORF: 3318 bp

Locus ID: 9644

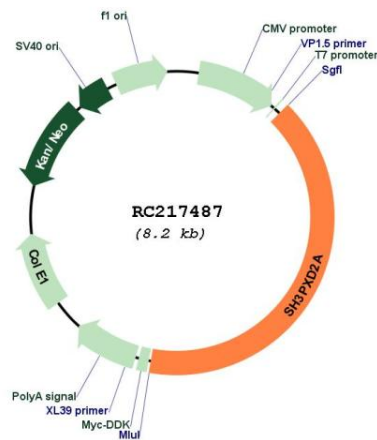
UniProt ID: [Q5TCZ1](#)

Cytogenetics: 10q24.33

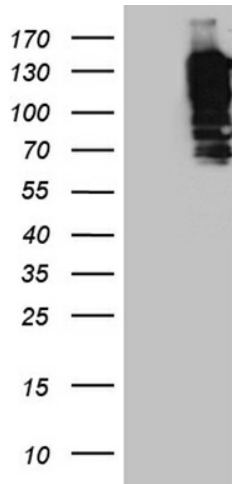
MW: 121.7 kDa

Gene Summary: Adapter protein involved in invadopodia and podosome formation, extracellular matrix degradation and invasiveness of some cancer cells. Binds matrix metalloproteinases (ADAMs), NADPH oxidases (NOXs) and phosphoinositides. Acts as an organizer protein that allows NOX1- or NOX3-dependent reactive oxygen species (ROS) generation and ROS localization. In association with ADAM12, mediates the neurotoxic effect of amyloid-beta peptide.[UniProtKB/Swiss-Prot Function]

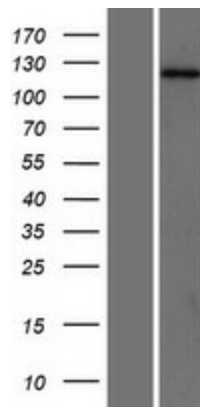
Product images:



Circular map for RC217487



HEK293T cells were transfected with the pCMV6-ENTRY control (Cat# [PS100001], Left lane) or pCMV6-ENTRY SH3PXD2A (Cat# RC217487, Right lane) cDNA for 48 hrs and lysed. Equivalent amounts of cell lysates (5 ug per lane) were separated by SDS-PAGE and immunoblotted with anti-SH3PXD2A (1:2000) (Cat# [TA811759]). Positive lysates [LY415151] (100ug) and [LC415151] (20ug) can be purchased separately from OriGene.



Western blot validation of overexpression lysate (Cat# [LY415151]) using anti-DDK antibody (Cat# [TA50011-100]). Left: Cell lysates from untransfected HEK293T cells; Right: Cell lysates from HEK293T cells transfected with RC217487 using transfection reagent MegaTran 2.0 (Cat# [TT210002]).