

Product datasheet for **RC217484**

CDADC1 (NM_030911) Human Tagged ORF Clone

Product data:

Product Type:	Expression Plasmids
Product Name:	CDADC1 (NM_030911) Human Tagged ORF Clone
Tag:	Myc-DDK
Symbol:	CDADC1
Synonyms:	bA103J18.1; NYD-SP15
Mammalian Cell Selection:	Neomycin
Vector:	pCMV6-Entry (PS100001)
E. coli Selection:	Kanamycin (25 ug/mL)



[View online »](#)

ORF Nucleotide
Sequence:

>RC217484 ORF sequence
Red=Cloning site Blue=ORF Green=Tags(s)

TTTTGTAATACGACTCACTATAGGGCGGCCGGGAATTCGTCGACTGGATCCGGTACCGAGGAGATCTGCC
GCCGCGATCGCC

ATGAAAGAAGCTGGGCAGATGCAAAATCTGGAGAGCGCGAGGGCCGGCGGTTCAGTCAGCACCCAGACTG
GCAGCATGACCGGTCAGATACCAAGGCTTTCTAAAGTCAACCTTTTCACTCTGCTCAGCCTCGGATGGA
GCTCTTTCCAGCAGAAGCCAGCGGCAAAAATCTCAGAAAAATGAAGAGGAAAGCATGGACCTTAGGA
GATAATGAAGAGAGGACCAGAGTATCTACTGACAAAAGACAGGTAAGAGAACTGGTCTTGTGGTGGTGA
AAAACATGAAAATTGTTGGTCTCCACTGTTCTAGTGAAGATTTACATGCCGGCAGATTGCTCTTATTAA
ACATGGGTCAAGGCTGAAAACTGTGATCTTTATTTTTCCAGAAAACCATGTTCTGCTTGTGAAAATG
ATTGTAATGCTGGAGTTAACCGAATTCATACTGGCCTGCTGATCCAGAAATAAGTTTGCTTACGGAGG
CTTCTAGTTCTGAAGATGCAAAGTTAGATGCCAAAGCAGTGAAAAGATTGAAGTCAAACAGTCGGGCCA
TGTGTGTGCTTACTTCAACCTTTGGTGTGTTATATGGTGCAGTTTGTAGAGGAGACCTCTTACAAATGT
GACTTTATTCAAAAAATTACAAAAACATTCGCCGATGCTAACACTGACTTTTATTATGAATGTAAACAAG
AAAGAATAAAAAGAAATGAAATGTTATTTTTGGTTTTCAAATGAAGAAATGCATAAGCAAATACTGATGAC
TATAGGTTTGGAGAACCTGTGTGAAAATCCATACTTTAGCAATCTAAGGCAAAACATGAAAGACCTTATC
CTACTTTTGGCCACAGTAGCTTCCAGTGTGCCGAACCTTAAACACTTCGGATTTTACCGTAGCAATCCAG
AACAGATTAATGAAATTCACAATCAAAGTTTGCACAGGAAATGCAAGGCACCTGCATGGTTTCAGGCCAG
GTTATTGGCATATCGAAGTGAAGATCATAAAACAGGAGTTGGGGCAGTCATTTGGCAGAAGGAAATCT
AGAAGTTGTGATGGAACAGGTGCCATGTACTTTGTAGGATGTGGTTACAATGCTTTTCTGTTGGATCTG
AGTATGCTGACTTCCCACACATGGATGACAAGCAGAAAGACAGAGAAATGAAGAAATTCAGATACATCAT
ACATGCGGAACAGAATGCCTTGACATTTAGGTGTCAAGAAATAAAACCAGAAGAAAGAAGCATGATTTTT
GTGACAAAAGTGCCCATGTGATGAGTGTGTACCTTAAATTAAGGTGCAGGCATAAAAAACAAATCTATGCAG
GAGATGTAGATGTTGGAAAAAAGAAGGCAGACATCTTACATGAGGTTTCGGGGAGCTTGAAGGTGTTAG
CAAATTTACGTGGCAGCTGAATCCATCAGGAGCTTATGGTCTTGAACAAAATGAGCCTGAAAGGAGAGAA
AATGGTGTGTTGAGACCTGTCCACAGAAGGAAGAGCAGCACCAGGACAAGAAGCTGCGCCTCGGAATCC
AC

ACGCGTACGCGGCCGCTCGAGCAGAAACTCATCTCAGAAGAGGATCTGGCAGCAAATGATATCCTGGATT
ACAAGGATGACGACGATAAGGTTTAA

Protein Sequence:

>RC217484 protein sequence
Red=Cloning site Green=Tags(s)

MKEAGQMQLNESARAGRSVSTQTGSMTGQIPRLSKVNLFTLLSLWMELFPAEAQRQKSQKNEEGKHGPLG
DNEERTRVSTDKRQVKRTGLVVVKNMKIVGLHCSSEDLHAGQIALIKHGSRLKNCDFSRKPCSACLKM
IVNAGVNRISYWPADPEISLLTEASSSEDAKLDAKAVERLKSNSRAHVCVLLQPLVCYMQVFVEETSQK
DFIQKITKLPDANTDFYIECKQERIKYEMLFLVSNEEMHKQILMTIGLENLCENPYFSLNRQNMKDLI
LLLATVASSVPNFKHFYRSNPEQINEIHNQSLPQEIARHCMVQARLLAYRTEDHKTGVGAVIWAEGKS
RSCDGTGAMYFVGCYNAFPVSEYADFPHMDDKQKDREIRKFRYIIHAEQNALTFRCQEIKPEERSMIF
VTKCPCDECVPLIKGAGIKQIYAGDVDVGKKKADISYMRFGELEGVSKFTWQLNPSGAYGLEQNEPERRE
NGVLRPVPQKEEQHQDKKLRLLGIH

TRTRPLEQKLISEEDLAANDILDYKDDDDKV

Chromatograms:

https://cdn.origene.com/chromatograms/mk6441_h11.zip

Restriction Sites:

Sgfl-Mlul

Cloning Scheme:

ACCN: NM_030911

ORF Size: 1542 bp

OTI Disclaimer: The molecular sequence of this clone aligns with the gene accession number as a point of reference only. However, individual transcript sequences of the same gene can differ through naturally occurring variations (e.g. polymorphisms), each with its own valid existence. This clone is substantially in agreement with the reference, but a complete review of all prevailing variants is recommended prior to use. [More info](#)

OTI Annotation: This clone was engineered to express the complete ORF with an expression tag. Expression varies depending on the nature of the gene.

Components: The ORF clone is ion-exchange column purified and shipped in a 2D barcoded Matrix tube containing 10ug of transfection-ready, dried plasmid DNA (reconstitute with 100 ul of water).

Reconstitution Method:

1. Centrifuge at 5,000xg for 5min.
2. Carefully open the tube and add 100ul of sterile water to dissolve the DNA.
3. Close the tube and incubate for 10 minutes at room temperature.
4. Briefly vortex the tube and then do a quick spin (less than 5000xg) to concentrate the liquid at the bottom.
5. Store the suspended plasmid at -20°C. The DNA is stable for at least one year from date of shipping when stored at -20°C.

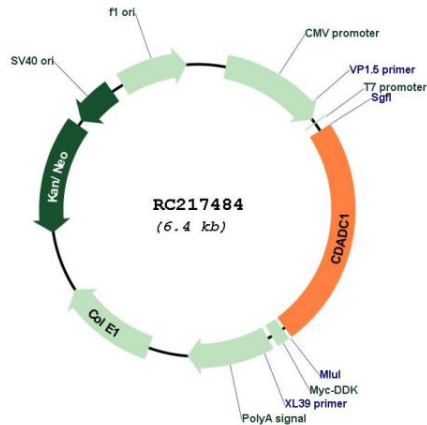
RefSeq: [NM_030911.4](#)
RefSeq Size: 3417 bp

RefSeq ORF: 1545 bp

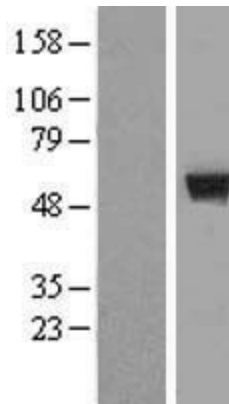
Locus ID: 81602

UniProt ID: [Q9BWW3](#)
Cytogenetics: 13q14.2

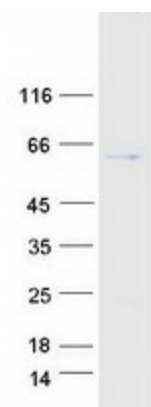
Domains: dCMP_cyt_deam
MW: 58.5 kDa
Gene Summary: May play an important role in testicular development and spermatogenesis.
 [UniProtKB/Swiss-Prot Function]

Product images:


Circular map for RC217484



Western blot validation of overexpression lysate (Cat# [LY410668]) using anti-DDK antibody (Cat# [TA50011-100]). Left: Cell lysates from untransfected HEK293T cells; Right: Cell lysates from HEK293T cells transfected with RC217484 using transfection reagent MegaTran 2.0 (Cat# [TT210002]).



Coomassie blue staining of purified CDADC1 protein (Cat# [TP317484]). The protein was produced from HEK293T cells transfected with CDADC1 cDNA clone (Cat# RC217484) using MegaTran 2.0 (Cat# [TT210002]).