

Product datasheet for **RC217483**

PRMT4 (CARM1) (NM_199141) Human Tagged ORF Clone

Product data:

Product Type:	Expression Plasmids
Product Name:	PRMT4 (CARM1) (NM_199141) Human Tagged ORF Clone
Tag:	Myc-DDK
Symbol:	PRMT4
Synonyms:	PRMT4
Mammalian Cell Selection:	Neomycin
Vector:	pCMV6-Entry (PS100001)
E. coli Selection:	Kanamycin (25 ug/mL)



[View online »](#)

ORF Nucleotide Sequence:

>RC217483 representing NM_199141
 Red=Cloning site Blue=ORF Green=Tags(s)

TTTTGTAATACGACTCACTATAGGGCGGCCGGGAATTCGTCGACTGGATCCGGTACCGAGGAGATCTGCC
 GCC**CGGATCGCC**

ATGGCAGCGGCGGCGGCGGCGGTGGGGCCGGGCGCGGAGGCGCGGGTCCGGGCGGCGCGG
 GGCCCTGCGCTACCGTGTGCGGTGTTCCCGGCGCCCGCCTCCTACCATCGGCGACGCGAACGGCGAGAT
 CCAGCGGCACGCGGAGCAGCAGGCGCTGCGCCTCGAGGTGCGCGCCGGCCGGACTCGGCGGGCATCGCC
 CTCTACAGCCATGAAGATGTGTGTGCTTTAAGTGCTCAGTGTCCGAGAGACAGAGTGCAGCCGTGTGG
 GCAAGCAGTCTTCATCATCACCTGGGCTGCAACAGCGTCTCATCCAGTTCGCCACACCCAACGATTT
 CTGTTCTTCTACAACATCTGAAAACCTGCCGGGGCCACACCCTGGAGCGGTCTGTGTTAGCGGAGCGG
 ACGGAGGAGTCTTCTGCCGTGCAGTACTCCAGTTTTATGGCTACCTGTCCAGCAGCAGAACATGATGC
 AGGACTACGTGCGGACAGGCACCTACCAGCGGCCATCTGCAAAACCACACCGACTTCAAGGACAAGAT
 CGTTCTTGATGTT:GGCTGTGGCTCTGGGATCCTGTCGTTTTTGGCCCAAGCTGGAGCAGGAAAAT
 CTACGCGGTGG:AGGCCAGCACCATGGCCAGCACGC:TGAGGTCTTGGTGAAGAGTAACAACCTGACGG
 ACCGCATCGTGGTCATCCCGGGCAAGGTGGA:GGA:GGTGT:CACT:CCCC:G:AGCAGGTGGACATCAT
 CAT:CTCGGAGCCATGGGCTACATGCTCTTCAACGA:GCGCATGCTGGAGAGCTACCTCCACGCCA:AG
 AAGTACCTGAAGCCAGCGGAAACATGTTTCTACCATTGGTGACGTCCACCTTGACCCCTTACGGATG
 AACAGCTCTACATGGAGCAGTTCACCAAGGCCAAGTCTGGTACCAGCCATCTTCCATGGAGTGGACCT
 GTCGGCCCTCCGAGGTGCCGCGGTGGATGAGTATTTCCGGCAGCCTGTGGTGGACACATTTGACATCCGG
 ATCCTGATGGCCAAGTCTGTCAAGTACACGGTGAACCTCTTAGAAGCCAAAGAAGGAGATTTGCACAGGA
 TAGAAATCCCATTCAAATTCACATGCTGCATTCAGGGCTGGTCCACGGCCTGGCTTCTGTTGTTGACGT
 TGCTTTCATCGGCTCCATAATGACCGTGTGGCTGTCCACAGCCCGACAGAGCCCTGACCCACTGGTAC
 CAGGTGCGGTGCCTGTTCCAGTCAACACTGTTCCGCAAGGCAGGGGACAGCTCTCAGGGACATGCTGTC
 TTATTGCCAACAAAAGACAGAGCTACGACATCAGTATTGTGGCCAGGTGGACCAGACCGGCTCCAAGTC
 CAGTAACCTCCTGGATCTGAAAAACCCCTCTTTAGATACACGGGCACAACGCCCTACCCCCACCCGGC
 TCCCACTACACATCTCCCTCGGAAAACATGTGGAACACGGGCAGCACCTACAACCTCAGCAGCGGGATG
 CCGTGGCAGGGATGCCGACCGCTATGACTTGAGCAGTGTATTGCCAGTGGCTCCAGCGTGGGCCATAA
 CAACCTGATTCTTTAGCCAACACGGGGATTGTCAATCACACCCACTCCCGGATGGGCTCCATAATGAGC
 ACGGGGATTGTCCAAGGGTCTCCGGCGCCAGGGCAGTGGTGGTGGCAGCAGAGTGCCCACTATGCAG
 TCAACAGCCAGTTCACCATGGGCGGCCCATCTCCATGGCGTCGCCATGTCCATCCCGACCAACAC
 CATGCACTACGGGAGC

ACGCGTACGCGGCCGCTCGAGCAGAACTCATCTCAGAAGAGGATCTGGCAGCAAATGATATCCTGGATT
 ACAAGGATGACGACGATAAGGTTTAA

Protein Sequence:

>RC217483 representing NM_199141
 Red=Cloning site Green=Tags(s)

MAAAAAVGPAGGAGSAPVGGAGPCATVSVFPGARLLTIGDANGEIQRHAEQQALRLEVRAGPDSAGIA
 LYSHEDEVCFKCSVSRETECSRVGKQSFIIITLGCNSVLIQFATPNDFCSFYNILKTCRGHTLERSVFSER
 TEESAVQYFQFYGYLSQQQNMMDYVRTGTQYRAILQNHTDFKDKIVLDVXLWLWDPVVFCRPSWSTEN
 LRGXRPAPWPSTXEVLVKSNLTDRIIVIPGKVGXGXCPXXQVDIIXLGAHGLHALQRXACWRATSTPX
 KYLKPSGNMFPTIGDVHLAPFTDEQLYMEQFTKANFWYQPSFHGVDLSALRGAAVDEYFRQPVVDTFDIR
 ILMKSVKYTVNFLEAKEGLHRIEIPFKFHLHSGLVHGLAFWFDVAFIGSIMTVWLSTAPTEPLTHWY
 QVRCLFQSPLFAKAGDTLSGTCLLIANKRQSYDISIVAQVDQGTGSKSNLLDLKNPFFRYTGTTPSPPPG
 SHYTSPSENMWNTGSTYNLSSGMAVAGMPTAYDLSSVIASSGSSVGHNNLIPLANTGIVNHTHSRMGSIMS
 TGIVQGSQAQSGGGSTSAHYAVNSQFTMGGPAISMASPMSIPTNTMHYGS

TRTRPLEQKLISEEDLAANDILDYKDDDDKV

Chromatograms: https://cdn.origene.com/chromatograms/mk6216_f06.zip

Restriction Sites: SgfI-MluI

Cloning Scheme:



ACCN: NM_199141

ORF Size: 1836 bp

OTI Disclaimer: The molecular sequence of this clone aligns with the gene accession number as a point of reference only. However, individual transcript sequences of the same gene can differ through naturally occurring variations (e.g. polymorphisms), each with its own valid existence. This clone is substantially in agreement with the reference, but a complete review of all prevailing variants is recommended prior to use. [More info](#)

OTI Annotation: This clone was engineered to express the complete ORF with an expression tag. Expression varies depending on the nature of the gene.

Components: The ORF clone is ion-exchange column purified and shipped in a 2D barcoded Matrix tube containing 10ug of transfection-ready, dried plasmid DNA (reconstitute with 100 ul of water).

Reconstitution Method:

1. Centrifuge at 5,000xg for 5min.
2. Carefully open the tube and add 100ul of sterile water to dissolve the DNA.
3. Close the tube and incubate for 10 minutes at room temperature.
4. Briefly vortex the tube and then do a quick spin (less than 5000xg) to concentrate the liquid at the bottom.
5. Store the suspended plasmid at -20°C. The DNA is stable for at least one year from date of shipping when stored at -20°C.

RefSeq: [NM_199141.1](#), [NP_954592.1](#)

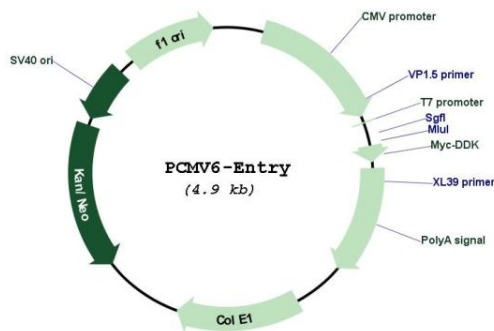
RefSeq Size: 2968 bp

RefSeq ORF: 1827 bp

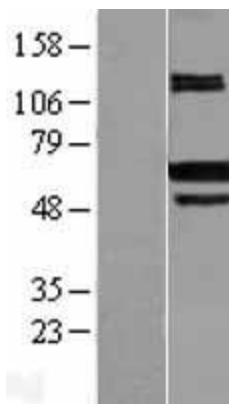
Locus ID: 10498
UniProt ID: [Q86X55](#)
Cytogenetics: 19p13.2
Protein Families: Druggable Genome, Transcription Factors
MW: 65.7 kDa

Gene Summary: This gene belongs to the protein arginine methyltransferase (PRMT) family. The encoded enzyme catalyzes the methylation of guanidino nitrogens of arginyl residues of proteins. The enzyme acts specifically on histones and other chromatin-associated proteins and is involved in regulation of gene expression. The enzyme may act in association with other proteins or within multi-protein complexes and may play a role in cell type-specific functions and cell lineage specification. A related pseudogene is located on chromosome 9. [provided by RefSeq, Aug 2013]

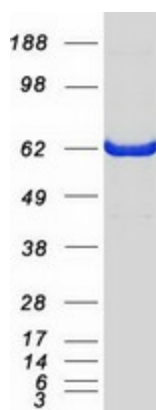
Product images:



Circular map for RC217483



Western blot validation of overexpression lysate (Cat# [LY404751]) using anti-DDK antibody (Cat# [TA50011-100]). Left: Cell lysates from untransfected HEK293T cells; Right: Cell lysates from HEK293T cells transfected with RC217483 using transfection reagent MegaTran 2.0 (Cat# [TT210002]).



Coomassie blue staining of purified CARM1 protein (Cat# [TP317483]). The protein was produced from HEK293T cells transfected with CARM1 cDNA clone (Cat# RC217483) using MegaTran 2.0 (Cat# [TT210002]).