

Product datasheet for RC217479

Kallikrein 5 (KLK5) (NM_001077491) Human Tagged ORF Clone

Product data:

Product Type:	Expression Plasmids
Product Name:	Kallikrein 5 (KLK5) (NM_001077491) Human Tagged ORF Clone
Tag:	Myc-DDK
Symbol:	Kallikrein 5
Synonyms:	KLK-L2; KLKL2; SCTE
Mammalian Cell Selection:	Neomycin
Vector:	pCMV6-Entry (PS100001)
E. coli Selection:	Kanamycin (25 ug/mL)
ORF Nucleotide Sequence:	>RC217479 ORF sequence Red=Cloning site Blue=ORF Green=Tags(s)

TTTTGTAATACGACTCACTATAGGGCGCCGGGAATTCGTCGACTGGATCCGGTACCGAGGAGATCTGCC
GCC**CGATCGCC**

ATGGCTACAGCAAGACCCCTGGATGTGGGTGCTCTGTGCTCTGATCACAGCCTTGCTTCTGGGGTCA
CAGAGCATGTTCTCGCCAACAATGATGTTTCTGTGACCACCCCTCTAACACCGTGCCCTCTGGGAGCAA
CCAGGACCTGGGAGCTGGGGCCGGGAAGACGCCCGTCCGGATGACAGCAGCAGCCGCATCATCAATGGA
TCCGACTGCGATATGCACACCCAGCCGTGGCAGGCCGCTGTTGCTAAGGCCAACAGCTCTACTGCC
GGCGGTGTTGGTGCATCCACAGTGGCTGCTCACGGCCGCCACTGCAGGAAGAAAGTTTTTCAGAGTCCG
TCTCGGCCACTACTCCCTGTACCAGTTTATGAATCTGGGCAGCAGATGTTCCAGGGGTCAAATCCATC
CCCCACCTGGCTACTCCACCCCTGGCCACTCTAACGACCTCATGCTCATCAAATGAACAGAAGAATTC
GTCCCACTAAAGATGTCAGACCCATCAACGTCTCCTCTCATTGTCCCTCTGCTGGGACAAAGTGCTTGGT
GTCTGGCTGGGGACAACCAAGAGCCCCAAGTGCACCTCCCTAAGGTCTCCAGTGCTTGAATATCAGC
GTGCTAAGTCAGAAAAGGTGCGAGGATGCTTACCCGAGACAGATAGATGACACCATGTTCTGCGCCGGT
ACAAAGCAGGTAGAGACTCCTGCCAGGGTATTCTGGGGGCCTGTGGTCTGCAATGGCTCCCTGCAGGG
ACTCGTGTCTGGGGAGATTACCCTTGTCCCGGCCAACAGACCCGGGTGCTACACGAACCTCTGCAAG
TTCACCAAGTGGATCCAGGAAACCATCCAGGCCAACTCC

ACGCGTACGCGGCCGCTCGAGCAGAAACTCATCTCAGAAGAGGATCTGGCAGCAAATGATATCCTGGATT
ACAAGGATGACGACGATAAGGTTTAA



[View online »](#)

Protein Sequence: >RC217479 protein sequence
Red=Cloning site Green=Tags(s)

MATARPPMWWL CALITALLGVTEHVL ANNDVSCDHPSNTVP SGNQDLGAGAGEDARSDDSSSRIING
SDCDMHTQPWQAALLLRPNQL YCGAVL VHPQWLLTAAHCRKVKVFRVRLGHYSLSPVYESGQMFQGVKSI
PHPGYSHPGHSNDLMLIKLNRRI RPTKDV RPINVS SHCPSAGTKCLVSGWGTTKSPQVHF PKVLQCLNIS
VLSQKRCE DAYPRQIDDTMFCAGDKAGR DSCQGD SGGPVV CNGSLQGLVSWG DYPCARPNRPGVYTNLCK
FTKWIQETIQANS

TRTRPLEQKLISEEDLAANDILDYKDDDDKV

Chromatograms: https://cdn.origene.com/chromatograms/mk6406_b06.zip

Restriction Sites: SgfI-MluI

Cloning Scheme:



ACCN: NM_001077491

ORF Size: 879 bp

OTI Disclaimer: The molecular sequence of this clone aligns with the gene accession number as a point of reference only. However, individual transcript sequences of the same gene can differ through naturally occurring variations (e.g. polymorphisms), each with its own valid existence. This clone is substantially in agreement with the reference, but a complete review of all prevailing variants is recommended prior to use. [More info](#)

OTI Annotation: This clone was engineered to express the complete ORF with an expression tag. Expression varies depending on the nature of the gene.

Components: The ORF clone is ion-exchange column purified and shipped in a 2D barcoded Matrix tube containing 10ug of transfection-ready, dried plasmid DNA (reconstitute with 100 ul of water).

Reconstitution Method:

1. Centrifuge at 5,000xg for 5min.
2. Carefully open the tube and add 100ul of sterile water to dissolve the DNA.
3. Close the tube and incubate for 10 minutes at room temperature.
4. Briefly vortex the tube and then do a quick spin (less than 5000xg) to concentrate the liquid at the bottom.
5. Store the suspended plasmid at -20°C. The DNA is stable for at least one year from date of shipping when stored at -20°C.

RefSeq: [NM_001077491.2](#)

RefSeq Size: 1435 bp

RefSeq ORF: 882 bp

Locus ID: 25818

UniProt ID: [Q9Y337](#)

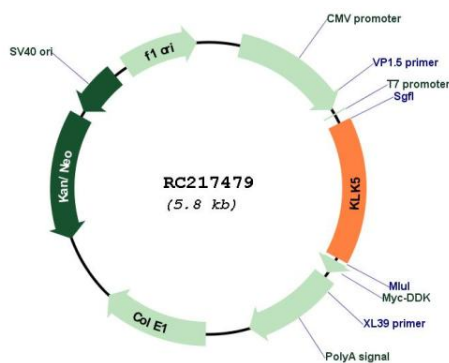
Cytogenetics: 19q13.41

Protein Families: Druggable Genome, Protease, Secreted Protein, Transmembrane

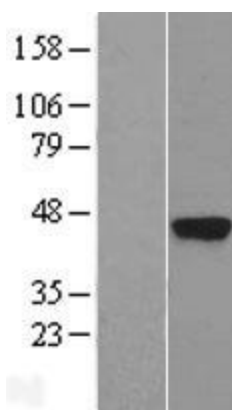
MW: 32 kDa

Gene Summary: Kallikreins are a subgroup of serine proteases having diverse physiological functions. Growing evidence suggests that many kallikreins are implicated in carcinogenesis and some have potential as novel cancer and other disease biomarkers. This gene is one of the fifteen kallikrein subfamily members located in a cluster on chromosome 19. Its expression is up-regulated by estrogens and progestins. The encoded protein is secreted and may be involved in desquamation in the epidermis. Alternative splicing results in multiple transcript variants encoding the same protein. [provided by RefSeq, Jul 2008]

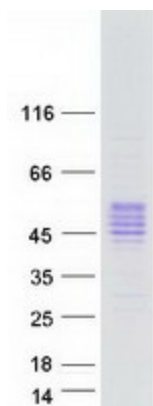
Product images:



Circular map for RC217479



Western blot validation of overexpression lysate (Cat# [LY421442]) using anti-DDK antibody (Cat# [TA50011-100]). Left: Cell lysates from untransfected HEK293T cells; Right: Cell lysates from HEK293T cells transfected with RC217479 using transfection reagent MegaTran 2.0 (Cat# [TT210002]).



Coomassie blue staining of purified KLK5 protein (Cat# [TP317479]). The protein was produced from HEK293T cells transfected with KLK5 cDNA clone (Cat# RC217479) using MegaTran 2.0 (Cat# [TT210002]).