

Product datasheet for **RC217473**

ZNF180 (NM_013256) Human Tagged ORF Clone

Product data:

Product Type:	Expression Plasmids
Product Name:	ZNF180 (NM_013256) Human Tagged ORF Clone
Tag:	Myc-DDK
Symbol:	ZNF180
Synonyms:	HHZ168
Mammalian Cell Selection:	Neomycin
Vector:	pCMV6-Entry (PS100001)
E. coli Selection:	Kanamycin (25 ug/mL)



[View online »](#)

ORF Nucleotide Sequence:

>RC217473 ORF sequence
 Red=Cloning site Blue=ORF Green=Tags(s)

TTTTGTAATACGACTCACTATAGGGCGGCCGGGAATTCGTGCGACTGGATCCGGTACCGAGGAGATCTGCC
 GCC**CGCATCGCC**

ATGCGCAGGGTCTACGCGGGAAGCTGGAAGCGGTGTGCAGCTCAGGACCTCAGCACCTGCTGTGCCTGG
 AGGAGAGCATGGAAGAGCAGGATGAGAAGCCCCAGGCCCCGAAGGCCTGTGCACAGGATTCTTTCTT
 TCCTCAAGAGATTATCATCAAAGTCGAGGGAGAAGACACTGGGTCTCTGACCATCCCATCTCAGGAAGGA
 GTGAACCTCAAAATTGTGACTGTGGACTTCACACGGGAGGAACAGGGTACTTGGAACCTGCTCAGAGGA
 CCCTGGACAGAGATGTGATCCTGGAGAACCACAGGGACCTAGTCTCTGGGACTTGGCAACTGCAGTTGG
 AAAAAAGATTCAACTTCAAAGCAGAGGATTTTTGATGAAGAACCAGCTAATGGAGTGAAGATAGAAAGG
 TTTACAAGGGATGATCCTTGGTTATCTTCATGTGAAGAAGTGGATGATTGTAAGACCAGTTGGAGAAGC
 AACAGGAAAAACAAGAGATACTTTGCAGGAAGTGGCATTCACTCAAAGGAAAGCAGTTATTCATGAGAG
 AGTCTGCAAAAGTGTGAACTGGGAGAGAGTGGTCTGAATCCAGTCTATTTTCATCCCCAGTTATA
 CCATAAGAAACCATTTTCATAAACATGTATCACATGCTAAAAATGGCATCTTAATGCTGCTGTAACA
 GTCATCAGAAGATTAATGAGAATGAGACACTATATGAAAAATGAATGTGGAAAACCCCTCAGAGCAT
 TCACCTTATTAGTTTACAAGAACTCAAACAAAAGATAAATGCTATGGATTTAGTGACCGTATTCAATCT
 TTTTGCCATGGTACACCCCTACATATACATGAAAAATTCATGGAGGAGGAAAAACCTTTGATTTTAAAG
 AATGTGGGCAGGTTTTGAACCCCAAAATATCCATAATGAACAACAGAGAATTCCTTTTGAAGAGAGTCA
 ATATAATGTAGTGAAACCTCTCATAGTTCCTCCCTTACTCAAACATGAGAAAATAATTCGAAGAGAAA
 CCTTTTGAATGTAATCAGTGTGGGAAATCCTTCAGCTGGAGCTCGCATCTTGTTCACATCAGAGAACCT
 ACACAGGGGAGAAAACCTTATGAATGTAGTGAATGTGAAAAATCCTTCAGCCGGAGCTCGCACCTTGTTC
 CCATCAGAGAACCTCATACTGGAGAGAAAACCTTACAGGTGAATCAATGTGGGAAATCCTTTAGCCGAGT
 TATGTCCTTGTGTGCATCAAAGAACTCATACTGGGGAGAAGCCTTATGAATGCAATCAATGTGGAAAGT
 CATTACAGCAGAGCTATAAACTTATTGCACATCAAAGAACACATACCGGAGAGAAGCCCTATGAATGTAA
 TCAATGTGGGAAATCATTATCCAGAGCTATAAACTTATTGCACATCAAAGAATTCATACTGGGAAAAA
 CCCTATGAATGCAATCAGTGTGGGAAATCCTTTAGTCAAAGTTATAAACTTGTGCTCATCAGAGAACCT
 ACACAGGAGAAAAACCTTTGAATGTAATCAGTGTGGGAAATCCTTCAGCTGGAGCTCTCAGCTTGTTC
 ACATCAAAGAACTCACACTGGAGAGAAACCGTATGAATGTAGTGAATGTGAAAAATCTTTAACCAGCAGT
 TCTCACCTTGTATGCATCAGAGAATTCACACTGGGAAAAACCGTATGAATGTAATCAGTGTGGGAAAT
 CCTTCAGCCAGAGTTATGTTCTTGTGTACATCAGAGAACCTCATACTGGAGAAAAGCCCTATGAATGCAG
 TCAATGTGGGAAGTCTTCAGACAGAGTTCATGCCTTACTCAACATCAGAGAACCTCATACTGGAGAGAAA
 CCATTTGAATGTAATCAGTGTGGAAAAACATTTAGCTTGAAGTGTGCGACTTATTGTGCATCAAAGAACT
 ATACTGGAGAGAAAACCTTTACATGTATTCAGTGTGGAAAAGCTTTCATTAATAGCTATAAACTTATTAG
 GCATCAGGCAACTCATACTGAAGAGAACTCTATGAATGTAAC

ACGCGTACGCGGCCGCTCGAGCAGAACTCATCTCAGAAGAGGATCTGGCAGCAATGATATCCTGGATT
 ACAAGGATGACGACGATAAGGTTTAA

Protein Sequence: >RC217473 protein sequence
Red=Cloning site Green=Tags(s)

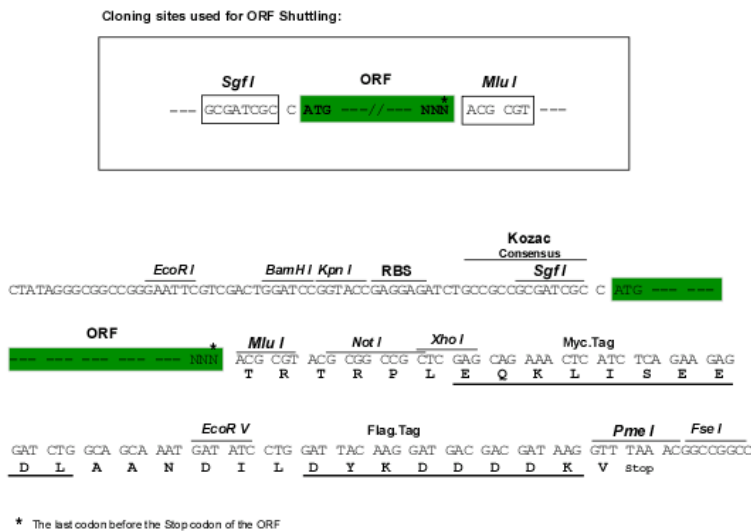
MRRVYAGSWKRCAAQDLSTLLCLEESMEEQDEKPEPPKACAQDSFLPQEIIKVEGEDTGSLTIPSQEG
 VNFKIVTVDFTREEQGTWNPQRTLDRDVIENHRDLVSWDLATAVGKDDSTSKQRIFDEEPANGVKIER
 FTRDDPWLSSCEEVDDCKDQLEKQEQEILLQEVAFTQRKAVIHERVCKSDETGEKSGLNSSLFSSPVI
 PIRNHFHKHVSHAKKWHLNAAVNSHQKINENETLYENNECGKPPQSIHLIQFTRTQTKDKCYGFSDRIQS
 FCHGTPLHIHEKIHGGGKTFDFKECGVLPNKISHNEQQRIPFEESQYKCSSETS SSSLTQNMNRNSEEK
 PFECNQCGKFSWSSHLVAHQRTHTGEKPYECSECGKFSRSSHLYSHQRTHTGEKPYRCNQCGKFSQS
 YVLVHQRTHTGEKPYECNQCGKFSRQSYKLIHQRTHTGEKPYECNQCGKFSIQSYKLIHQRIHTGEK
 PYECNQCGKFSQSYKLIHQRTHTGEKPFECNQCGKFSWSSQLVAHQRTHTGEKPYECSECGKFSNRS
 SHLVMHQRIHTGEKPYECNQCGKFSQSYVLVHQRTHTGEKPYECNQCGKFSRQSSCLTQHRTHTGEK
 PFECNQCGKTFSLSARLIVHQRTHTGEKPFCTIQCGKAFINSYKLIRHQATHTEEKLYECN

TRTRPLEQKLISEEDLAANDILDYKDDDDKV

Chromatograms: https://cdn.origene.com/chromatograms/mk6560_f05.zip

Restriction Sites: SgfI-MluI

Cloning Scheme:



ACCN: NM_013256

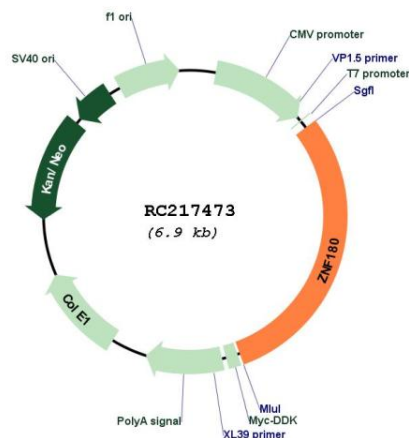
ORF Size: 2073 bp

OTI Disclaimer: The molecular sequence of this clone aligns with the gene accession number as a point of reference only. However, individual transcript sequences of the same gene can differ through naturally occurring variations (e.g. polymorphisms), each with its own valid existence. This clone is substantially in agreement with the reference, but a complete review of all prevailing variants is recommended prior to use. [More info](#)

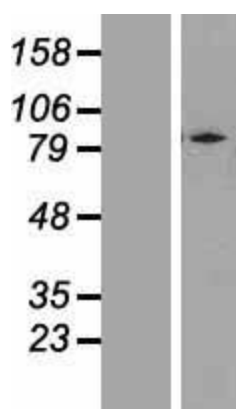
OTI Annotation: This clone was engineered to express the complete ORF with an expression tag. Expression varies depending on the nature of the gene.

Components:	The ORF clone is ion-exchange column purified and shipped in a 2D barcoded Matrix tube containing 10ug of transfection-ready, dried plasmid DNA (reconstitute with 100 ul of water).
Reconstitution Method:	<ol style="list-style-type: none"> 1. Centrifuge at 5,000xg for 5min. 2. Carefully open the tube and add 100ul of sterile water to dissolve the DNA. 3. Close the tube and incubate for 10 minutes at room temperature. 4. Briefly vortex the tube and then do a quick spin (less than 5000xg) to concentrate the liquid at the bottom. 5. Store the suspended plasmid at -20°C. The DNA is stable for at least one year from date of shipping when stored at -20°C.
RefSeq:	NM_013256.6
RefSeq Size:	4336 bp
RefSeq ORF:	2079 bp
Locus ID:	7733
UniProt ID:	Q9UJW8
Cytogenetics:	19q13.31
Domains:	KRAB, zf-C2H2
Protein Families:	Transcription Factors
MW:	79.3 kDa
Gene Summary:	Zinc finger proteins have been shown to interact with nucleic acids and to have diverse functions. The zinc finger domain is a conserved amino acid sequence motif containing 2 specifically positioned cysteines and 2 histidines that are involved in coordinating zinc. Kruppel-related proteins form 1 family of zinc finger proteins. See MIM 604749 for additional information on zinc finger proteins.[supplied by OMIM, Jul 2002]

Product images:



Circular map for RC217473



Western blot validation of overexpression lysate (Cat# [LY415715]) using anti-DDK antibody (Cat# [TA50011-100]). Left: Cell lysates from untransfected HEK293T cells; Right: Cell lysates from HEK293T cells transfected with RC217473 using transfection reagent MegaTran 2.0 (Cat# [TT210002]).