

## Product datasheet for RC217469

### CEACAM3 (NM\_001815) Human Tagged ORF Clone

#### Product data:

Product Type:	Expression Plasmids
Product Name:	CEACAM3 (NM_001815) Human Tagged ORF Clone
Tag:	Myc-DDK
Symbol:	CEACAM3
Synonyms:	CD66D; CEA; CGM1; W264; W282
Mammalian Cell Selection:	Neomycin
Vector:	pCMV6-Entry (PS100001)
E. coli Selection:	Kanamycin (25 ug/mL)
ORF Nucleotide Sequence:	>RC217469 ORF sequence Red=Cloning site Blue=ORF Green=Tags(s)

TTTTGTAATACGACTCACTATAGGGCGCCGGAATTCGTCGACTGGATCCGGTACCGAGGAGATCTGCC  
GCC**CGATCGCC**

ATGGGGCCCCCTCAGCCTCTCCACAGAGAATGCATCCCTGGCAGGGGCTTCTGCTCACAGCCTCAC  
TTCTAACTTCTGGAACCCGCCACCCTGCAAGCTCACTATTGAATCCATGCCGCTCAGTGTGCAGAG  
GGGAAGGAGGTGCTTCTACTTGTCCACAATCTGCCCCAGCATCTTTTGGCTACAGCTGGTACAAAGG  
GAAAGAGTGGATGGCAACAGTCTAATTGTAGGATATGTAATAGGAACTCAACAAGCTACCCAGGGGCC  
CATAACAGCGGTCGAGAGACAATATACCAATGCATCCCTGCTGATCCAGAAATGTCACCCAGAATGACAT  
AGGATTCTACACCCTACAAGTCATAAAGTCAGATCTTGTGAATGAAGAAGCAACTGGACAGTTCCATGTA  
TACCAAGAAAATGCCCCAGGCCCTTCTGTGGGGCCGTCGCCGGCATCGTGACCGGGTCTGGTCGGAG  
TGGCGCTGGTGGCCGCGCTGGTGTGTTTCTGCTCCTTGCCAAAAGTGAAGAACCAGCATCCAGCGTGA  
CCTCAAGGAGCAGCAGCCCCAAGCCCTTGCCCTGGCCGTGGTCCCTCCACAGCTCTGCCTTCTCGATG  
TCCCCTCTCTCCACTGCCAGGCCCTTACCAACCCAGGACAGCAGCTTCCATCTATGAGGAATTGC  
TAAACATGACACAAACATTTACTGCCGGATGGACCACAAAGCAGAAGTGGCTTCT

**ACGCGT**ACGCGGCCGCTCGAGCAGAACTCATCTCAGAAGAGGATCTGGCAGCAAATGATATCCTGGATT  
ACAAGGATGACGACGATAAGGTTTAA



[View online »](#)

**Protein Sequence:** >RC217469 protein sequence  
 Red=Cloning site Green=Tags(s)

MGPPSASPHRECIPWQGLLLTASLLNFWNPPTAKLTIESMPLSVAEGKEVLLL VHNLPQH LFGYSWYKG  
 ERVDGNSLIVGYVIGTQQATPGAAYS GRETIYTNASLLIQNVTQNDIGFYTLQVIKSDLVNEEATGQFHV  
 YQENAPGLPVGAVAGIVTGVLVGVALVAALVCFLLAKTGR TSIQRDLKEQPQALAPGRGPSHSSAFSM  
 SPLSTAQAPLPNPRTAASIYEELLKHDTNIYCRMDHKAEVAS

TRTRPLEQKLISEEDLAANDILDYKDDDDKV

**Chromatograms:** [https://cdn.origene.com/chromatograms/mk6458\\_g05.zip](https://cdn.origene.com/chromatograms/mk6458_g05.zip)

**Restriction Sites:** SgfI-MluI

**Cloning Scheme:**



**ACCN:** NM\_001815

**ORF Size:** 756 bp

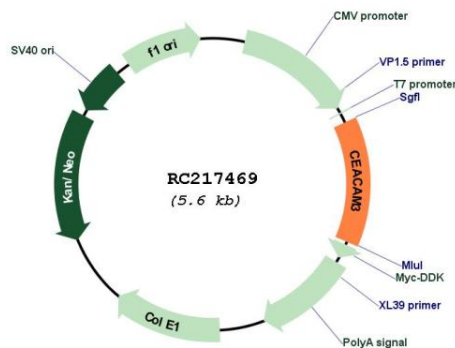
**OTI Disclaimer:** Due to the inherent nature of this plasmid, standard methods to replicate additional amounts of DNA in E. coli are highly likely to result in mutations and/or rearrangements. Therefore, OriGene does not guarantee the capability to replicate this plasmid DNA. Additional amounts of DNA can be purchased from OriGene with batch-specific, full-sequence verification at a reduced cost. Please contact our customer care team at [custsupport@origene.com](mailto:custsupport@origene.com) or by calling 301.340.3188 option 3 for pricing and delivery.

The molecular sequence of this clone aligns with the gene accession number as a point of reference only. However, individual transcript sequences of the same gene can differ through naturally occurring variations (e.g. polymorphisms), each with its own valid existence. This clone is substantially in agreement with the reference, but a complete review of all prevailing variants is recommended prior to use. [More info](#)

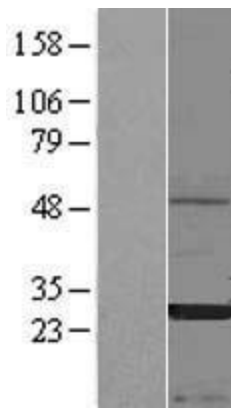
**OTI Annotation:** This clone was engineered to express the complete ORF with an expression tag. Expression varies depending on the nature of the gene.

<b>Components:</b>	The ORF clone is ion-exchange column purified and shipped in a 2D barcoded Matrix tube containing 10ug of transfection-ready, dried plasmid DNA (reconstitute with 100 ul of water).
<b>Reconstitution Method:</b>	<ol style="list-style-type: none"> <li>1. Centrifuge at 5,000xg for 5min.</li> <li>2. Carefully open the tube and add 100ul of sterile water to dissolve the DNA.</li> <li>3. Close the tube and incubate for 10 minutes at room temperature.</li> <li>4. Briefly vortex the tube and then do a quick spin (less than 5000xg) to concentrate the liquid at the bottom.</li> <li>5. Store the suspended plasmid at -20°C. The DNA is stable for at least one year from date of shipping when stored at -20°C.</li> </ol>
<b>RefSeq:</b>	<u>NM_001815.5</u>
<b>RefSeq Size:</b>	1163 bp
<b>RefSeq ORF:</b>	759 bp
<b>Locus ID:</b>	1084
<b>UniProt ID:</b>	<u>P40198</u>
<b>Cytogenetics:</b>	19q13.2
<b>Protein Families:</b>	Transmembrane
<b>MW:</b>	27.1 kDa
<b>Gene Summary:</b>	This gene encodes a member of the family of carcinoembryonic antigen-related cell adhesion molecules (CEACAMs), which are used by several bacterial pathogens to bind and invade host cells. The encoded transmembrane protein directs phagocytosis of several bacterial species that is dependent on the small GTPase Rac. It is thought to serve an important role in controlling human-specific pathogens by the innate immune system. Alternatively spliced transcript variants have been described. [provided by RefSeq, Mar 2013]

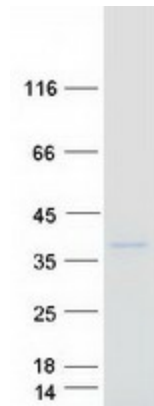
### Product images:



Circular map for RC217469



Western blot validation of overexpression lysate (Cat# [LY419723]) using anti-DDK antibody (Cat# [TA50011-100]). Left: Cell lysates from untransfected HEK293T cells; Right: Cell lysates from HEK293T cells transfected with RC217469 using transfection reagent MegaTran 2.0 (Cat# [TT210002]).



Coomassie blue staining of purified CEACAM3 protein (Cat# [TP317469]). The protein was produced from HEK293T cells transfected with CEACAM3 cDNA clone (Cat# RC217469) using MegaTran 2.0 (Cat# [TT210002]).