

Product datasheet for **RC217468**

OASL (NM_003733) Human Tagged ORF Clone

Product data:

Product Type:	Expression Plasmids
Product Name:	OASL (NM_003733) Human Tagged ORF Clone
Tag:	Myc-DDK
Symbol:	OASL
Synonyms:	OASL1; OASLd; p59 OASL; p59-OASL; p59OASL; TRIP-14; TRIP14
Mammalian Cell Selection:	Neomycin
Vector:	pCMV6-Entry (PS100001)
E. coli Selection:	Kanamycin (25 ug/mL)



[View online »](#)

ORF Nucleotide Sequence:

>RC217468 ORF sequence
 Red=Cloning site Blue=ORF Green=Tags(s)

TTTTGTAATACGACTCACTATAGGGCGGCCGGAATTCGTCGACTGGATCCGGTACCGAGGAGATCTGCC
 GCC**CGCATCGCC**

ATGGCACTGATGCAGAACTGTATAGCACACCAGCCTCCAGGCTGGACTCCTTCGTGGCTCAGTGGCTGC
 AGCCCCACCGGGAGTGAAGGAAGAGGTGCTAGACGCTGTGCGGACCGTGGAGGAGTTTCTGAGGCAGGA
 GCATTTCCAGGGGAAGCGTGGGCTGGACCAGGATGTGCGGGTGGTGAAGGTAGTCAAGGTGGGCTCCTTC
 GGGAAATGGCACGGTTCTCAGGAGCACCAGAGAGGTGGAGCTGGTGGCGTTTCTGAGCTGTTTCCACAGCT
 TCCAGGAGGCAGCCAAGCATCACAAAGATGTTCTGAGGCTGATATGAAAAACCATGTGGCAAAGCCAGGA
 CCTGCTGGACCTCGGGCTCGAGGACCTGAGGATGGAGCAGAGAGTCCCCGATGCTCTTGTCTTACCATC
 CAGACCAGGGGACTGCGGAGCCATCACGGTACCATTGTGCCTGCCTACAGAGCCCTGGGGCCTTCTC
 TTCCAACTCCCAGCCACCCCTGAGGTCTATGTGAGCCTGATCAAGGCCTGCGGTGGTCTGAAATTT
 CTGCCATCCTTACGCGAGCTGCAGAGAAATTTCTGAAACATCGCCAACTAAGCTGAAGAGCCTCCTG
 CGCTGGTGAAACTGGTACCAGCAGTATGTGAAAGCCAGGTCCCCAGAGCCAATCTGCCCCCTCTCT
 ATGCTCTTGAACCTTAACCATCTATGCCTGGGAAATGGTACTGAAGAAGACGAGAATTTTCATGTTGGA
 CGAAGGCTTACCACTGTGATGGACCTGCTCCTGGAGTATGAAGTCATCTGTATCTACTGGACCAAGTAC
 TACACACTCCACAATGCAATCATTGAGGATTGTGTGAGAAAACAGCTCAAAAAAGAGAGGCCCATCATCC
 TGGATCCGGCCGACCCACCCCTCAACGTGGCAGAAGGGTACAGATGGGACATCGTTGCTCAGAGGGCCTC
 CCAGTGCCTGAAACAGGACTGTTGCTATGACAACAGGGAGAAGCCCATCTCCAGCTGGAACGTGAAGAGG
 GCACGAGACATCCACTTGACAGTGGAGCAGAGGGGTTACCCAGATTTCAACCTCATCGTGAACCCCTATG
 AGCCCATAAAGGAAGTTAAAGAGAAAAATCCGGAGGACCAGGGGCTACTTGGCCTGCAGCTCTGCTCTT
 CCAGGTTCTGGCAGTGAGAGGCAGCTTCTCAGCAGCAGGTGCTCCTTAGCCAAATATGGGATCTTCTCC
 CACACTCACATCTATCTGCTGGAGACCATCCCCTCCGAGATCCAGGTCTTCTGTAAGAATCCTGATGGT
 GGAGCTACGCCTATGCCATCAACCCCAACAGTTCATCCTGGGTCTGAAGCAGCAGATTGAAGACCAGCA
 GGGGCTTCTCTAAAAAGCAGCAGCAGCTGGAATTCAGGCAAGTCTGCAGGACTGGTTGGGTCTGGG
 ATCTATGGCATCCAAGACAGTGACTCTCATCTCTCGAAGAAGAAAGGAGAGGCTCTGTTTCCAGCCA
 GT

ACGCGTACGCGGCCGCTCGAGCAGAAACTCATCTCAGAAGAGGATCTGGCAGCAAATGATATCCTGGATT
 ACAAGGATGACGACGATAAGGTTTAA

Protein Sequence:

>RC217468 protein sequence
 Red=Cloning site Green=Tags(s)

MALMQELYSTPASRLDSFVAQWLQPHREWKEEVLDAVRTVEEFLRQEHFQGKRGLDQDVRVLKVVKVGSGF
 NGTIVLRSTREVELVAFVLSFHSFQEAAKHHKDVLRLLIWKTMWQSQDLDLGLDLRMEQRVDPDALVFTI
 QTRGTAEPITVTIIVPAYRALGPSLPNSQPPPEVYVSLIKACGGPNFCPSFSELQRNFVKHRPTKLKSL
 RLVKHWYQYVVKARSPRANLPPLYLELLTIYAWEMGTEEDENFMLDEGFTTMDLLLEYEVICIIYWKY
 YTLHNAIIEDCVRKQLKKERPIILDPAADPTLNVAEGYRWDIVAQRASQCLKQDCCYDNRNPISSWNVKR
 ARDIHLTVEQRGYPDFNLIVNPYEPKIRVKEKIRRTRGYSGLQRLSFQVPGSERQLLSSRCSLAKYGIFS
 HTHIYLLETIPSEIQVFVKNPDGGSYAYAINPNSFILGLKQIIEQQGLPKKQQLEFQGVLDLGLG
 IYGIQSDTLILSKKKGEALFPAS

TRTRPLEQKLISEEDLAANDILDYKDDDDKV

Chromatograms:

https://cdn.origene.com/chromatograms/mk6464_e09.zip

Restriction Sites:

Sgfl-MluI

Cloning Scheme:


ACCN: NM_003733

ORF Size: 1542 bp

OTI Disclaimer: The molecular sequence of this clone aligns with the gene accession number as a point of reference only. However, individual transcript sequences of the same gene can differ through naturally occurring variations (e.g. polymorphisms), each with its own valid existence. This clone is substantially in agreement with the reference, but a complete review of all prevailing variants is recommended prior to use. [More info](#)

OTI Annotation: This clone was engineered to express the complete ORF with an expression tag. Expression varies depending on the nature of the gene.

Components: The ORF clone is ion-exchange column purified and shipped in a 2D barcoded Matrix tube containing 10ug of transfection-ready, dried plasmid DNA (reconstitute with 100 ul of water).

- Reconstitution Method:**
1. Centrifuge at 5,000xg for 5min.
 2. Carefully open the tube and add 100ul of sterile water to dissolve the DNA.
 3. Close the tube and incubate for 10 minutes at room temperature.
 4. Briefly vortex the tube and then do a quick spin (less than 5000xg) to concentrate the liquid at the bottom.
 5. Store the suspended plasmid at -20°C. The DNA is stable for at least one year from date of shipping when stored at -20°C.

RefSeq: [NM_003733.1](#)

RefSeq Size: 2103 bp

RefSeq ORF: 1545 bp

Locus ID: 8638

UniProt ID: [Q15646](#)

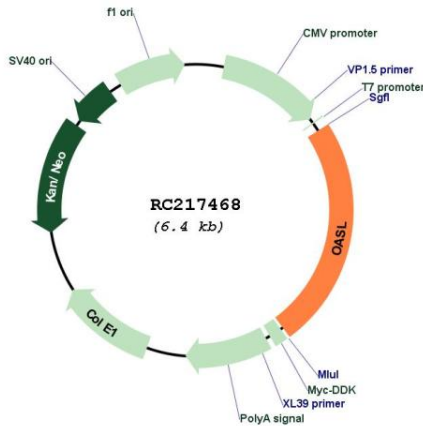
Cytogenetics: 12q24.31

Protein Families: Druggable Genome

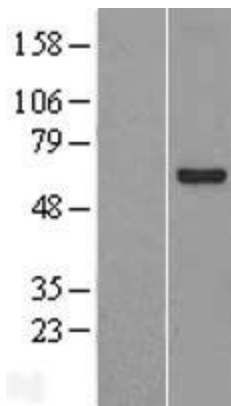
MW: 59.2 kDa

Gene Summary: Does not have 2'-5'-OAS activity, but can bind double-stranded RNA. Displays antiviral activity against encephalomyocarditis virus (EMCV) and hepatitis C virus (HCV) via an alternative antiviral pathway independent of RNase L.[UniProtKB/Swiss-Prot Function]

Product images:



Circular map for RC217468



Western blot validation of overexpression lysate (Cat# [LY418473]) using anti-DDK antibody (Cat# [TA50011-100]). Left: Cell lysates from untransfected HEK293T cells; Right: Cell lysates from HEK293T cells transfected with RC217468 using transfection reagent MegaTran 2.0 (Cat# [TT210002]).