

## Product datasheet for **RC217458**

### cadherin 10 (CDH10) (NM\_006727) Human Tagged ORF Clone

#### Product data:

Product Type:	Expression Plasmids
Product Name:	cadherin 10 (CDH10) (NM_006727) Human Tagged ORF Clone
Tag:	Myc-DDK
Symbol:	cadherin 10
Mammalian Cell Selection:	Neomycin
Vector:	pCMV6-Entry (PS100001)
E. coli Selection:	Kanamycin (25 ug/mL)



[View online »](#)

ORF Nucleotide  
Sequence:

>RC217458 representing NM\_006727  
Red=Cloning site Blue=ORF Green=Tags(s)

TTTTGTAATACGACTCACTATAGGGCGGCCGGGAATTCGTGACTGGATCCGGTACCGAGGAGATCTGCC  
GCC**CGGATCGCC**

ATGACAATACATCAATTTTTGCTACTGTTTCTATTCTGGGTATGCCTGCCACATTTCTGCTCTCCAGAAA  
TAATGTTTCAGAAGGACGCTGTGCCACAGCAAAGAATTTAAGTTCACGTGTACCAAGGAGTGATGGCAA  
AATTCTCCATCGTCAAAAACGTGGTTGGATGTGGAATCAATTTTTCTACTTGAAGAATATACAGGATCT  
GATTATCAGTACGTAGGCAAGCTACATTCAGACCAAGATAAAGGAGATGGATCAAAATATATCTTAT  
CTGGAGATGGAGCTGGTACTCTTTTTATTATTGATGAAAAACAGGTGATTTTCATGCCACAAGCGGAAT  
TGATAGGGAGGAAAAGGCCTTTTATACTCTACGCGCACAAAGCTATTAACAGAAGAACTCTGAGGCCAGTA  
GAGCCAGAGTCAGAGTTTGTGATCAAAATTCATGATATCAATGACAATGAGCCAACGTTCCGAGAAGAAA  
TCTATACAGCTAGTGTCCCGAAATGTCTGTTGTAGTACTTCTGTGGTCAAGTCACAGCTACAGATGC  
CGATGACCCTTCATATGGGAACAGCGCCAGAGTCATTTACAGCATACTTCAAGGGCAGCCCTATTTCTCT  
GTGGAGCCTGAAACAGGTATCATCAGGACTGCTTTACCGAACATGAACAGAGAAAACAGAGAGCAATACC  
AAGTGGTCATCCAGGCCAAAGACATGGGCGGCCAGATGGGAGGCTTATCGGGGACAACTGTGAACAT  
CACGCTGACAGATGTCAATGACAACCCACCACGTTTCCCCAGAACAATTTTCATCTTCCAGTCTTGTAA  
TCCTCCCCAGTTGGCACAGCCATTGGAAGTGTCAAAGCAACTGATGCTGACACTGGGAAAAATGCTGAAG  
TAGAATACCGAATTATTGATGGTACGGTACTGATATGTTTGACATCGTACTGAGAAGGACACACAGGA  
AGGCATCATCACTGTGAAAAAGCCACTCGACTATGAGAGCCGAAGACTTTATACTCTGAAAGTCGAAGCA  
GAAAACACCCATGTAGATCCCGTTTTTATTACCTAGGACCATTTAAAGATACTACCATAGTGAAAAATCT  
CTATAGAAGATGTGGATGAACCTCTGTTTTAGTAGTCTCTCTATCTGTTTGAAGTTCATGAAGATAT  
TGAAGTGGGCACAATCATTGGTACTGTAATGGCAAGGGACCCAGATTCTATTTCCAGCCCCATTAGATTT  
TCCTTGGATCGCCATACTGACCTTGACAGAATCTTTAACATTCATTCAGGAAATGGATCTCTTTATACAT  
CAAAACCTCTTGACCGTGAACATCTCAGTGGCATAATCTTACTGTTATTGCTGTGAAATCAACAATCC  
CAAAGAGACAACACGCGTGGCTGTTTTTGTGAGAAATTTGGATGTTAATGACAATGCCCCACAGTTTGT  
GTGTTCTATGACACTTTTGTATGTGAAATGCCAGACCAGGGCAGCTAATACAGACTATAAGTGCAGTAG  
ACAAAGATGACCCTTTAGGTGGACAGAAATTTTTTTTTCAGTTTAGCTGCTGTCAATCCAACTTCACAGT  
ACAGGATAATGAAGATAACTGCCAGAATCTTAACCAGAAAAAATGGATTCAATAGACATGAAATCAGT  
ACCTATCTCTTGCTGTGGTGATATCAGACAATGATTACCCAATTCAGAGCAGCACAGGCACACTGACCA  
TTCGAGTGTGTGCTTGTGACAGCCAAGGCAACATGCAATCCTGCAGTGTGAAGCCCTGCTCCTCCTGC  
CGGCCTCAGCACTGGGGCCTTGATCGCCATCCTCCTCTGCATCATCTACTGTTTATAGTAGTACTG  
TTTGCAGCTCTGAAAAGACAGCGAAAAAAGAGCCTCTGATCTTGTCAAAGAAGATATCAGAGACAACA  
TTGTGAGCTATAACGATGAGGGTGGTGGAGAGGAGGACACCCAGGCCCTTGATATCGGCACCCTGAGGAA  
TCCTGCAGCCATTGAGGAAAAAAGCTCCGGCGAGATATTATCCAGAAACGTTATTTATTCCTCGGAGG  
ACTCCTACAGCTCCAGATAACACGGACGTCGGGATTTTATTAAAGGCTAAAAGAGCATGATCTTG  
ACCCACCCGACCCCTACGACTCACTTGAACCTATGCCTATGAAGGAAATGATTCATTGCTGAATC  
TCTGAGTTCATTAGAATCAGGTACTACTGAAGGAGACAAAACACTACGATTACCTCCGAGAATGGGGCCCT  
CGGTTTAAAGCTAGCAGAAATGTATGGTGGTGGGAAAAGTGACAAAGACTCT

**AGCGGACCG**ACGCGTACGCGGCCGCTCGAGCAGAACTCATCTCAGAAGAGGATCTGGCAGCAAATGATATCC  
TGGATTACAAGGATGACGACGATAAGGTTTAA

**Protein Sequence:** >RC217458 representing NM\_006727  
Red=Cloning site Green=Tags(s)

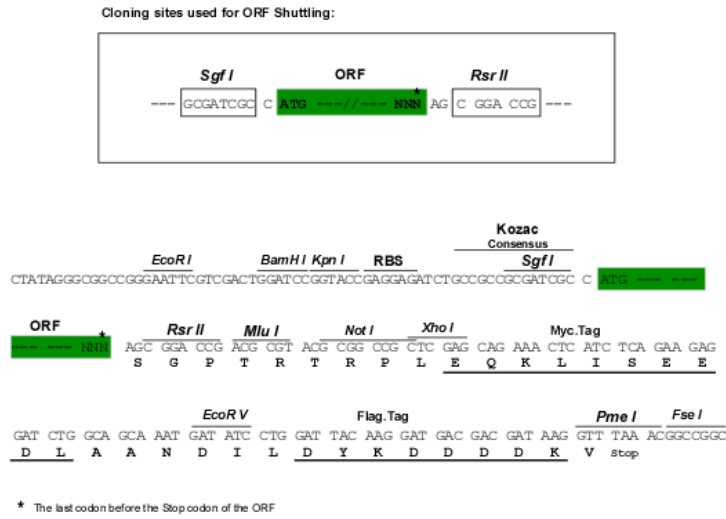
MTIHQFLLFLFWVCLPHFCSPEIMFRRTVPVQQRILSSRVPRSDGKILHRQKRGWMWNQFFLLEEYTGSDYQYVVGKLGSDQDKDGLKYLISGDGAGTLFIIDEKTGDIHATRRIDREEKAFYTLRAQAINRRTLRPV  
EPESEFVIKIHDINDNEPTFPPEIYTASVPEMSVVGTSVVQVTATDADDPSYGNSARVIYSILQGQPYFS  
VEPETGIIRTALPNMNRENREQYQVVIQAKDMGGQMGGLSGTTT VNITLTDVNDNPPRFQNTIHLRVLE  
SSPVGTAIGSVKATDADTGKNAEVEYRIIDGDGDMFDIVTEKDTQEGIITVKKPLDYESRRLYTLKVEA  
ENTHVDPFRFYLLGPFKDTTIVKISIEDVDEPPVFSRSSYLFEVHEDIEVGTIIGTMARDPDISISSPIRF  
SLDRHTDLDRIFNIHSGNGSLYTSKPLDRELSQWHNLTVIAAEINNPKETTRVAVFVRILDVNDNAPQFA  
VFYDTFVCENARPGQLIQTISAVDKDDPLGGQKFFFLAAVNPFTVQDNEDNTARILTRKNGFNRHEIS  
TYLLPVVISDNDYPIQSSTGTLTIRVCACDSQGNMQSCSAEALLLPAGLSTGALIAILLIILLVIVVL  
FAALKRQRKKEPLILSKEDIRDNIYSYNDGEGGEEDTQAFDIGTLRNPAEIEKKLRRDIIPETLFIIPRR  
TPTAPDNTDVRDFINERLKEHDLPTAPPYDSLATYAYEGNDSIAESLSSLESGETEGDQNYDYLREWGP  
RFNKLAEMYGGGESDKDS

SGP TRRRLEQKLISEEDLAANDILDYKDDDDKV

**Chromatograms:** [https://cdn.origene.com/chromatograms/mg4947\\_h04.zip](https://cdn.origene.com/chromatograms/mg4947_h04.zip)

**Restriction Sites:** Sgfl-RsrII

Cloning Scheme:



ACCN: NM\_006727

ORF Size: 2364 bp

OTI Disclaimer: The molecular sequence of this clone aligns with the gene accession number as a point of reference only. However, individual transcript sequences of the same gene can differ through naturally occurring variations (e.g. polymorphisms), each with its own valid existence. This clone is substantially in agreement with the reference, but a complete review of all prevailing variants is recommended prior to use. [More info](#)

OTI Annotation: This clone was engineered to express the complete ORF with an expression tag. Expression varies depending on the nature of the gene.

Components: The ORF clone is ion-exchange column purified and shipped in a 2D barcoded Matrix tube containing 10ug of transfection-ready, dried plasmid DNA (reconstitute with 100 ul of water).

**Reconstitution Method:**

1. Centrifuge at 5,000xg for 5min.
2. Carefully open the tube and add 100ul of sterile water to dissolve the DNA.
3. Close the tube and incubate for 10 minutes at room temperature.
4. Briefly vortex the tube and then do a quick spin (less than 5000xg) to concentrate the liquid at the bottom.
5. Store the suspended plasmid at -20°C. The DNA is stable for at least one year from date of shipping when stored at -20°C.

**RefSeq:** [NM\\_006727.5](#)

**RefSeq Size:** 3261 bp

**RefSeq ORF:** 2367 bp

**Locus ID:** 1008

**UniProt ID:** [Q9Y6N8](#)

**Cytogenetics:** 5p14.2-p14.1

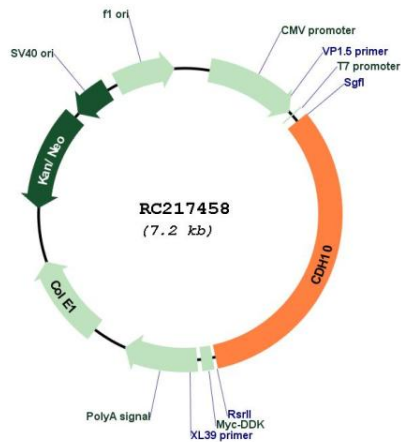
**Domains:** Cadherin\_C\_term, CA

**Protein Families:** Transmembrane

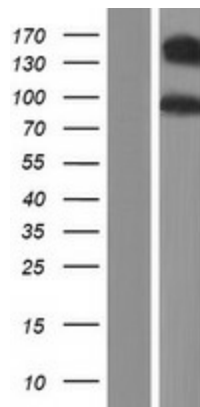
**MW:** 88.3 kDa

**Gene Summary:** This gene encodes a type II classical cadherin of the cadherin superfamily. Alternative splicing of this gene results in multiple transcript variants. At least one of these variants encodes a preproprotein that is proteolytically processed to generate the mature cadherin protein. These integral membrane proteins mediate calcium-dependent cell-cell adhesion and are composed of a large N-terminal extracellular domain, a single membrane-spanning domain, and a small, highly conserved C-terminal cytoplasmic domain. The extracellular domain consists of 5 subdomains, each containing a cadherin motif, and appears to determine the specificity of the protein's homophilic cell adhesion activity. Type II (atypical) cadherins are defined based on their lack of a histidine-alanine-valine (HAV) cell adhesion recognition sequence specific to type I cadherins. This particular cadherin is predominantly expressed in brain and is putatively involved in synaptic adhesions, axon outgrowth and guidance. Mutations in this gene may be associated with lung squamous cell carcinoma and colorectal cancer in human patients. [provided by RefSeq, Nov 2015]

Product images:



Circular map for RC217458



Western blot validation of overexpression lysate (Cat# [LY416465]) using anti-DDK antibody (Cat# [TA50011-100]). Left: Cell lysates from untransfected HEK293T cells; Right: Cell lysates from HEK293T cells transfected with RC217458 using transfection reagent MegaTran 2.0 (Cat# [TT210002]).