

## Product datasheet for RC217450

### CRIP3 (NM\_206922) Human Tagged ORF Clone

#### Product data:

**Product Type:** Expression Plasmids  
**Product Name:** CRIP3 (NM\_206922) Human Tagged ORF Clone  
**Tag:** Myc-DDK  
**Symbol:** CRIP3  
**Synonyms:** CRP-3; h6LIMo; TLP; TLP-A  
**Mammalian Cell Selection:** Neomycin  
**Vector:** pCMV6-Entry (PS100001)  
**E. coli Selection:** Kanamycin (25 ug/mL)  
**ORF Nucleotide Sequence:** >RC217450 representing NM\_206922  
 Red=Cloning site Blue=ORF Green=Tags(s)

TTTTGTAATACGACTCACTATAGGGCGCCGGGAATTCGTCGACTGGATCCGGTACCGAGGAGATCTGCCGCCGCGATCGCC

ATGAGCTGGACCTGTCCGCGTTGCCAGCAACCTGTTTTCTTCGCTGAGAAGGTGAGCTCCCTGGGCAAGA  
 ACTGGCACCCTTCTGCCTGAAATGTGAGCGCTGCCACAGCATCTGTCCCCTGGCGGCATGCAGAGCA  
 CAATGGGAGGCCATACTGCCACAAGCCATGCTATGGGGCTCTTTGGACCCAGGGGGTGAACATTGGT  
 GGTGTAGGCTCCTACTTGTACAATCCCCCACTCCAGCCCTGGCTGCACCACTCCTCTCAGCCCCAGCA  
 GCTTCAGCCCTCCAGGCCAAGGACTGGCTCCCCAAGGCAAGAAAAGCCCTCCCATATGAAGACATT  
 CACTGGGGAGACCTCGCTGTGCCCTGGCTGTGGGGAGCCCGTCTATTTTGCTGAGAAGGTGATGTCATTA  
 GGCAGAAATTGGCACCGACCGTGTCTGAGGTGCCAGCGTTGCCACAAGACCCTGACTGCTGGGAGTCATG  
 CTGAGCATGATGGAGTCCCCTACTGCCACGTCCCCTGCTACGGCTACCTGTTTGGCCCCAAAGGTGTGAA  
 CATTGGCGATGTGGGCTGCTACATCTATGACCCAGTGAAGATAAAATTCAA

ACGCGTACGCGGCCGCTCGAGCAGAACTCATCTCAGAAGAGGATCTGGCAGCAAATGATATCCTGGATT  
 ACAAGGATGACGACGATAAGGTTTAA

**Protein Sequence:** >RC217450 representing NM\_206922  
 Red=Cloning site Green=Tags(s)

MSWTCPRCQQPVFFAEKVSSLGKNWHRFLCKERCCHSILSPGGHAEHNGRPYCHKPCYGFALFGRGVNIG  
 VGVSYL YNPPTSPGCTTPLSPSSFSPRPRTGLPQKKSPPHMKTFTGETSLCPGCGEPVYFAEKVMSL  
 GRNWHRPCLRCQRCHKTLTAGSHAHDGVPYCHVPCYGYLFGPKGVNIGDVGCIYDPVKIKFK

TRTRPLEQKLISEEDLAANDILDYKDDDDKV



[View online »](#)

**Chromatograms:** [https://cdn.origene.com/chromatograms/mk8015\\_f08.zip](https://cdn.origene.com/chromatograms/mk8015_f08.zip)

**Restriction Sites:** SgfI-MluI

**Cloning Scheme:**



**ACCN:** NM\_206922

**ORF Size:** 1772 bp

**OTI Disclaimer:** The molecular sequence of this clone aligns with the gene accession number as a point of reference only. However, individual transcript sequences of the same gene can differ through naturally occurring variations (e.g. polymorphisms), each with its own valid existence. This clone is substantially in agreement with the reference, but a complete review of all prevailing variants is recommended prior to use. [More info](#)

**OTI Annotation:** This clone was engineered to express the complete ORF with an expression tag. Expression varies depending on the nature of the gene.

**Components:** The ORF clone is ion-exchange column purified and shipped in a 2D barcoded Matrix tube containing 10ug of transfection-ready, dried plasmid DNA (reconstitute with 100 ul of water).

**Reconstitution Method:**

1. Centrifuge at 5,000xg for 5min.
2. Carefully open the tube and add 100ul of sterile water to dissolve the DNA.
3. Close the tube and incubate for 10 minutes at room temperature.
4. Briefly vortex the tube and then do a quick spin (less than 5000xg) to concentrate the liquid at the bottom.
5. Store the suspended plasmid at -20°C. The DNA is stable for at least one year from date of shipping when stored at -20°C.

**RefSeq:** [NM\\_206922.3](#)

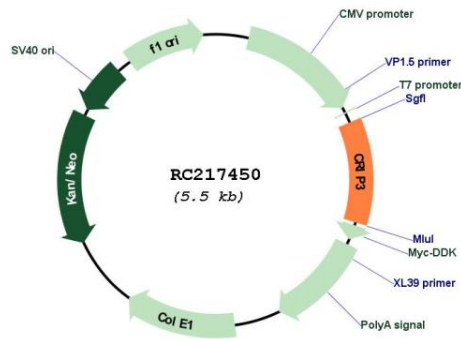
**RefSeq Size:** 654 bp

**RefSeq ORF:** 615 bp

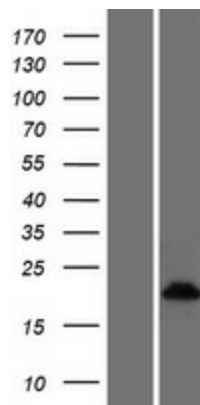
**Locus ID:** 401262

UniProt ID: [Q6Q6R5](#)  
 Cytogenetics: 6p21.1  
 MW: 22.3 kDa

**Product images:**



Circular map for RC217450



Western blot validation of overexpression lysate (Cat# [LY404171]) using anti-DDK antibody (Cat# [TA50011-100]). Left: Cell lysates from untransfected HEK293T cells; Right: Cell lysates from HEK293T cells transfected with RC217450 using transfection reagent MegaTran 2.0 (Cat# [TT210002]).