

## Product datasheet for RC217449

### CLCN6 (NM\_021737) Human Tagged ORF Clone

#### Product data:

Product Type:	Expression Plasmids
Product Name:	CLCN6 (NM_021737) Human Tagged ORF Clone
Tag:	Myc-DDK
Symbol:	CLCN6
Synonyms:	CLC-6; KIAA0046
Mammalian Cell Selection:	Neomycin
Vector:	pCMV6-Entry (PS100001)
E. coli Selection:	Kanamycin (25 ug/mL)
ORF Nucleotide Sequence:	>RC217449 representing NM_021737 Red=Cloning site Blue=ORF Green=Tags(s)

TTTTGTAATACGACTCACTATAGGGCGGCCGGAATTCGTCGACTGGATCCGGTACCGAGGAGATCTGCC  
GCC**CGATCGCC**

ATGGCGGGGTGCAGGGGGTCTCTGTGCTGCTGCTGCAGGTGGTGTGCTGCTGCGGTGAGCGTGAGACCC  
GCACCCCGAGGAGCTGACCATCCTTGGAGAAACACAGGAGGAGGAGGATGAGATTCTTCCAAGGAAAGA  
CTATGAGAGTTTGGATTATGATCGCTGTATCAATGACCCTTACCTGGAAGTTTTGGAGACCATGGATAAT  
AAGAAAGGTCGAAGATATGAGGCGGTGAAGTGGATGGTGGTGTGGCCATTGGAGTCTGCACTGGCCTGG  
TGGGTCTCTTTGTGGACTTTTTGTGCGACTCTTACCCAACTCAAGTTCGGAGTGGTACAGACATCGGT  
GGAGGAGTGCAGCCAGAAAGGCTGCCTCGCTCTGTCTCTCTTGAACCTCCTGGGTTTTAACCTCACCTTT  
GTCTTCTGGCAAGCCTCCTTGTCTCATTGAGCCGGTGGCAGCAGGTTCCGGGATACCCGAGGTCAAAT  
GCTATCTGAATGGCGTAAAGGTGCCAGGAATCGTCCGTCTCCGGACCCTGCTCTGCAAGGTCTTGGAGT  
GCTGTTCAGTGTGGCTGGAGGGCTCTTCTGTTGGGAAGGAAGGCCCATGATCCACAGTGGTTCGGTGGT  
GGAGCTGGCCTCCCTCAGTTTCAGAGCATCTCCTTACGGAAGATCCAGTTAACTTCCCCTATTTCCGAA  
GCGACAGGAGCGGCTGCTGGAGTTGCTGCAGCTTTCGGGGCGCCAATCGGGGTACCTTGTTCAGTCTAG  
AGGAGGGTTCGTCTTCTGGAACCAAGGGCTCAGTGGAAAGTGTCTTTTGTCCATGTCTGCCACCTT  
CACCTCAACTTCTTCCGTTCTGGATTTCAGTTTGAAGTGGGGTTCCTCCAGCTCCCTGGATTGCTG  
AACTTTGGCGAGTT

**ACGCGT**ACGCGGCCGCTCGAGCAGAAACTCATCTCAGAAGAGGATCTGGCAGCAAATGATATCCTGGATT  
ACAAGGATGACGACGATAAGGTTTAA



[View online »](#)

**Protein Sequence:** >RC217449 representing NM\_021737  
Red=Cloning site Green=Tags(s)

MAGCRGSLCCCCRWCCCCGERETRTPEELTILGETQEEDEILPRKDYESLDYDRcindpylevletmdn  
 KKGRRYEAVKWMVFAIGVCTGLVGLFVDFVRLFTQLKFGVVQTSVEECSQKGLALSLELLGFNLTF  
 VFLASLLVLI EPVAAGSGIPEVKCYLNGVKVPGIVRLRTLCKVLGVLFVAGGLFVKGEGPMIHSGSVV  
 GAGLPQFQISL RKI QFNFPYFRSDRSGCWSSCSFRGANRGYLVQSRGGFVLEPRAHVESALLFHVCHL  
 HPQLLPFWD SVWKL GFLPAPWIAELWRV

TRTRPLEQKLISEEDLAANDILDYKDDDDKV

**Chromatograms:** [https://cdn.origene.com/chromatograms/ja1276\\_e03.zip](https://cdn.origene.com/chromatograms/ja1276_e03.zip)

**Restriction Sites:** SgfI-MluI

**Cloning Scheme:**

Cloning sites used for ORF Shuttling:



**ACCN:** NM\_021737

**ORF Size:** 924 bp

**OTI Disclaimer:** The molecular sequence of this clone aligns with the gene accession number as a point of reference only. However, individual transcript sequences of the same gene can differ through naturally occurring variations (e.g. polymorphisms), each with its own valid existence. This clone is substantially in agreement with the reference, but a complete review of all prevailing variants is recommended prior to use. [More info](#)

**OTI Annotation:** This clone was engineered to express the complete ORF with an expression tag. Expression varies depending on the nature of the gene.

**Components:** The ORF clone is ion-exchange column purified and shipped in a 2D barcoded Matrix tube containing 10ug of transfection-ready, dried plasmid DNA (reconstitute with 100 ul of water).

**Reconstitution Method:**

1. Centrifuge at 5,000xg for 5min.
2. Carefully open the tube and add 100ul of sterile water to dissolve the DNA.
3. Close the tube and incubate for 10 minutes at room temperature.
4. Briefly vortex the tube and then do a quick spin (less than 5000xg) to concentrate the liquid at the bottom.
5. Store the suspended plasmid at -20°C. The DNA is stable for at least one year from date of shipping when stored at -20°C.

**RefSeq:** [NM\\_021737.2](#)

**RefSeq Size:** 3858 bp

**RefSeq ORF:** 926 bp

**Locus ID:** 1185

**Cytogenetics:** 1p36.22

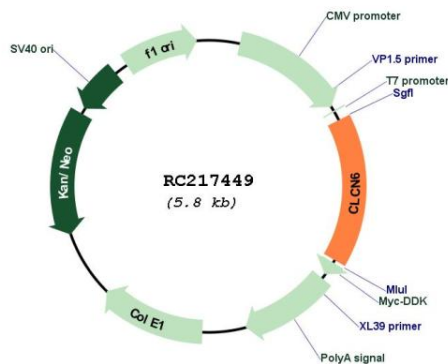
**Domains:** voltage\_CLC

**Protein Families:** Druggable Genome, Ion Channels: Other, Transmembrane

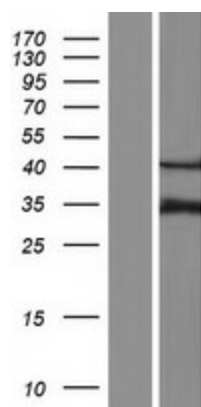
**MW:** 34.3 kDa

**Gene Summary:** This gene encodes a member of the voltage-dependent chloride channel protein family. Members of this family can function as either chloride channels or antiporters. This protein is primarily localized to late endosomes and functions as a chloride/proton antiporter. Alternate splicing results in both coding and non-coding variants. Additional alternately spliced variants have been described but their full-length structure is unknown. [provided by RefSeq, Mar 2012]

**Product images:**



Circular map for RC217449



Western blot validation of overexpression lysate (Cat# [LY411931]) using anti-DDK antibody (Cat# [TA50011-100]). Left: Cell lysates from untransfected HEK293T cells; Right: Cell lysates from HEK293T cells transfected with RC217449 using transfection reagent MegaTran 2.0 (Cat# [TT210002]).