

Product datasheet for **RC217448**

MAP4K3 (NM_003618) Human Tagged ORF Clone

Product data:

Product Type:	Expression Plasmids
Product Name:	MAP4K3 (NM_003618) Human Tagged ORF Clone
Tag:	Myc-DDK
Symbol:	MAP4K3
Synonyms:	GLK; MAPKKKK3; MEKKK 3; MEKKK3; RAB8IPL1
Mammalian Cell Selection:	Neomycin
Vector:	pCMV6-Entry (PS100001)
E. coli Selection:	Kanamycin (25 ug/mL)



[View online »](#)

ORF Nucleotide
Sequence:

>RC217448 representing NM_003618
Red=Cloning site Blue=ORF Green=Tags(s)

TTTTGTAATACGACTCACTATAGGGCGGCCGGAATTCGTGACTGGATCCGGTACCGAGGAGATCTGCC
GCCGCGATCGCC

ATGAACCCCGCTTCGATTTGTCCCGCCGGAACCCGAGGAGACTTCGAGCTGATTTCAGCGCATCGGCA
GCGGCACCTACGGCGACGTCTACAAGGCACGGAATGTTAACTACTGGTGAATTAGCAGCAATTAAGTAAT
AAAATTGGAACAGGAGAAGACTTTGCAGTTGTGCAGCAAGAAATATCATGATGAAAGACTGTAACAC
CCAAATATTGTTGCTTATTTGGAAGCTATCTCAGGCGAGATAAGCTTTGGATTTGCATGGAGTTTTGTG
GAGGTGGTCTTTACAGGATATTATCACGTAACCTGGACCTCTGTCAGAACTGCAAATTCATATGTTAG
CAGAGAAACACTGCAGGGATTATATTATCTTCACAGTAAAGGAAAAATGCACAGAGATATAAAGGGAGCT
AACATTCTATTAACGGATAATGGTCATGTGAAATGGCTGATTTTGGAGTATCTGCACAGATAACAGCTA
CAATTGCCAAACGGAAGTCTTTCATTGGCACACCATATTGGATGGCTCCAGAAGTTCAGCTGTTGAGAG
GAAGGGGGTTACAATCAACTCTGTGATCTCTGGCAGTGGGAATCACTGCCATAGAACTTCAGAGCTT
CAGCCTCCTATGTTTGACTTACACCCAATGAGAGCATTATTTCTAATGACAAAAAGCAATTTTCAGCCTC
CTAAACTAAAGGATAAAATGAAATGGTCAAAATAGTTTTTCATCACTTTGTGAAAAATGGCACTTACAAAAA
TCCGAAAAAAGACCTACTGCTGAAAAATATTACAGCATCCTTTTGTAAACAACATTTGACACGGTCT
TTGGCAATCGAGCTGTTGGATAAAGTAAATAATCCAGATCATTCCACTTACCATGATTTTCGATGATGATG
ATCCTGAGCCTCTTGTGCTGTACCACATAGAATTCACCTCAACAAGTAGAAAACGTGAGAGAAGAAAAAC
ACGCTCAGAGATAACCTTTGGCCAAGTGAATTTGATCCACCTTAAGAAAGGAGACAGAACCACATCAT
GAATTTCCCGACAGTGTGGTTTTTGGACAGTTCAGAAGAAATATACTACACTGCAAGATCTAATCTGG
ATCTGCAACTGGAATATGGACAAGCACCAAGTGGTTACTTTTTAGGTGCAAAACAAGAGTCTTCTCAA
GTCTGTTGAAGAAGAATTGCATCAGCGAGGACAGTCCGACATTTAGAAGATGATGAAGGAGATGATGAT
GAATCTAAACTCAACTCTGAAAGCAAAAATTCACCTCCTTTGCCACCAAAGCCTAAGTCTATCTTCA
TACCACAGGAAATGCATTCTACTGAGGATGAAAAATCAAGGAACAATCAAGAGATGTCCCATGTCAGGGAG
CCCAGCAAAGCCATCCCAAGTCCACCTAGACCACCACCTCCAGATTACCCCAACACAAACCTGTTGCC
TTAGGAAATGGAATGAGCTCCTTCCAGTAAATGGTGAACGAGATGGCTCATTATGTCAACAACAGAAATG
AACATAGAGGCACAAACCTTTCAAGAAAAGAAAAGAAAGATGTACCAAAGCCTATTAGTAATGGTCTTCC
TCCAACACCTAAAGTGCATATGGGTGCATGTTTTTCAAAGTTTTTAATGGGTGCCCTTAAAAATTCAC
TGTGCATCATCATGGATAAACCAGATAACAAGAGATCAGTACTTGATATTTGGTGCCGAGAAGGGATTT
ATACCCTCAATCTAATGAACTTCATGAAACATCAATGGAACAGCTATCCCTCGAAGGTGTACATGGTT
GTATGTAATGAACAATTGCTTGCTATCAATATCTGGTAAAGCTTCTCAGCTTTATTTCCATAATTTACCA
GGGCTTTTTGATTATGCAAGACAAATGCAAAAGTTACCTGTTGCTATTCCAGCACACAACTCCCTGACA
GAATACTGCCAAGGAAATTTTCTGTATCAGCAAAAATCCCTGAAACCAATGGTGCCAGAAGTGTGTGT
TGTAAGAAATCCTTACACGGGCCATAAAATACCTATGTGGAGCACTTCAGACTAGCATTGTTCTATTAGAA
TGGGTTGAACCAATGCAGAAATTTATGTTAATTAAGCACATAGATTTTCTATACCATGTCCACTTAGAA
TGTTTGAATGCTGGTAGTTCCTGAACAGGAGTACCCTTAGTTTGTGTTGGTGTGAGGAGGATAGAGA
CTTCAACCAAGTGGTTCGATTTGAGACGGTCAATCCAAATCTACCTCTCATGGTTTACAGAATCAGAT
ACCCACAGACAAATGTTACTCATGTAACCCAAGTGGAGAGAGATACCATCCTTGTATGCTTGGACTGTT
GTATAAAAATAGTAAATCTCAAGGAAGATTAATAATCTAGCAGGAAATGTCATCAGAACTCACCTTTGA
TTTCCAGATTGAATCAATAGTGTGCTACAAGACAGTGTGCTAGCTTTCTGGAAACATGGAATGCAAGGT
AGAAGTTTTAGATCTAATGAGGTAACACAAGAAATTTTCAGATAGCACAAGAATTTTCAGGCTGCTTGGAT
CTGACAGGGTCTGGTTTTGAAAGTAGGCCAAGTATAACCCACAGCAATAGCAATTTGTACATCCT
GGCGGGTCATGAAAACAGTTAC

ACGCGTACGCGGCCGCTCGAGCAGAAACTCATCTCAGAAGAGGATCTGGCAGCAATGATATCCTGGATT
ACAAGGATGACGACGATAAGGTTTAA

Protein Sequence: >RC217448 representing NM_003618
 Red=Cloning site Green=Tags(s)

MNPGFDLRRNPQEDFELIQRIGSGTYGDVYKARNVNTGELAAIKVIKLEPGEDFAVVQEIIMMKDCKH
 PNIVAYFGSYLRRDKLWICMEFCGGSLQDIYHVTGPLSELQIAYVSRETLQGLYYLHSGKMRDIKGA
 NILLTDNGHVKLADFGVSAQITATIAKRKSFIGTPYWMAPEVAVERKGGYNQLCDLWAVGITAIELAE
 QPPMFDLHPMRALFLMTKSNFQPPKLDKMKWSNSFHFFVKMALTKNPKKRPTAEKLLQHPFVTQHLTRS
 LAIELLDKVNNDHSTYHDFDDDDPEPLVAVPHRIHSTSRNVREKTRSEITFGQVKFDPPLRKETEPH
 ELPDSDGFLDSSEEIYYTARNDLQLEYGQGHQGGYFLGANKSLLKSVEEELHQRGHVAHLEDDGDD
 ESKHSTLKAKIPPPLPPKPSIFIPQEMHSTEDENQGTIKRCPMSGSPAKPSQVPPRPPPPRLPPHKPVA
 LGNGMSSFQLNGERDGSQCQQNEHRGTNL SRKEKDVPKPISNGLPPTPKVHMGACFSKVFNGCPLKIH
 CASSWINPDTRDQYLIFGAEEGIYTLNLNELHETSMEQLFPRRCTWL VVMNCLLSISGKASQLYSHNLP
 GLFDYARQMQLPVAIPAHKLPDRILPRKFSVSAKIPETKWCQCCVVRNPYTGHKYLCGALQTSIVLLE
 WVEPMQKFMLIKIDFPIPCPLRMFEMLVVPEQEYPLVCVGVSRGRDFNQVVRFETVNPNSTSSWFTESD
 TPQTNVHTVTLERDITLVCLDCCIKIVNLQGRKSSRKLSELTFDFQIESIVLCLQDSVLAFAWKHGMQG
 RSFRSNEVTQEISDSTRIFRLLGSDRVVLESRPTDNPTANSLYILAGHENS

TRTRPLEQKLISEEDLAANDILDYKDDDDKV

Chromatograms: https://cdn.origene.com/chromatograms/mk6203_g05.zip

Restriction Sites: SgfI-MluI

Cloning Scheme:

Cloning sites used for ORF Shuttling:

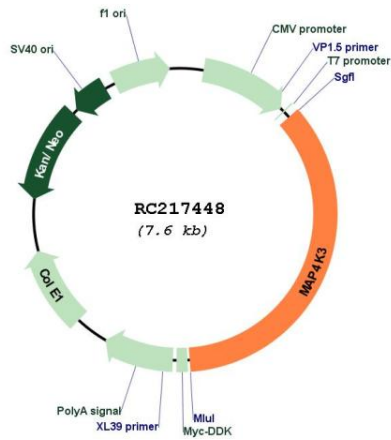


* The last codon before the Stop codon of the ORF

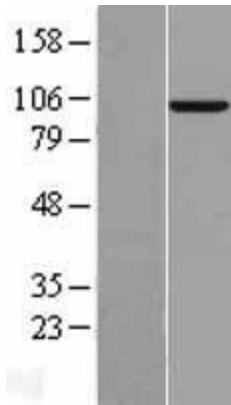
ACCN: NM_003618

ORF Size:	2682 bp
OTI Disclaimer:	The molecular sequence of this clone aligns with the gene accession number as a point of reference only. However, individual transcript sequences of the same gene can differ through naturally occurring variations (e.g. polymorphisms), each with its own valid existence. This clone is substantially in agreement with the reference, but a complete review of all prevailing variants is recommended prior to use. More info
OTI Annotation:	This clone was engineered to express the complete ORF with an expression tag. Expression varies depending on the nature of the gene.
Components:	The ORF clone is ion-exchange column purified and shipped in a 2D barcoded Matrix tube containing 10ug of transfection-ready, dried plasmid DNA (reconstitute with 100 ul of water).
Reconstitution Method:	<ol style="list-style-type: none">1. Centrifuge at 5,000xg for 5min.2. Carefully open the tube and add 100ul of sterile water to dissolve the DNA.3. Close the tube and incubate for 10 minutes at room temperature.4. Briefly vortex the tube and then do a quick spin (less than 5000xg) to concentrate the liquid at the bottom.5. Store the suspended plasmid at -20°C. The DNA is stable for at least one year from date of shipping when stored at -20°C.
Note:	Plasmids are not sterile. For experiments where strict sterility is required, filtration with 0.22um filter is required.
RefSeq:	NM_003618.4
RefSeq Size:	4141 bp
RefSeq ORF:	2685 bp
Locus ID:	8491
UniProt ID:	Q8IVH8
Cytogenetics:	2p22.1
Domains:	pkinase, CNH, TyrKc, S_TKc
Protein Families:	Druggable Genome, Protein Kinase
Protein Pathways:	MAPK signaling pathway
MW:	101.1 kDa
Gene Summary:	This gene encodes a member of the mitogen-activated protein kinase kinase kinase kinase family. The encoded protein activates key effectors in cell signalling, among them c-Jun. Alternatively spliced transcripts encoding multiple isoforms have been observed for this gene. [provided by RefSeq, Jul 2012]

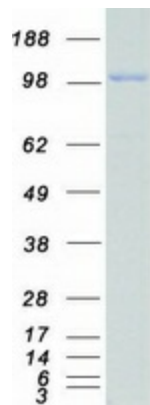
Product images:



Circular map for RC217448



Western blot validation of overexpression lysate (Cat# [LY401198]) using anti-DDK antibody (Cat# [TA50011-100]). Left: Cell lysates from untransfected HEK293T cells; Right: Cell lysates from HEK293T cells transfected with RC217448 using transfection reagent MegaTran 2.0 (Cat# [TT210002]).



Coomassie blue staining of purified MAP4K3 protein (Cat# [TP317448]). The protein was produced from HEK293T cells transfected with MAP4K3 cDNA clone (Cat# RC217448) using MegaTran 2.0 (Cat# [TT210002]).