

Product datasheet for RC217441

TCEAL5 (NM_001012979) Human Tagged ORF Clone

Product data:

Product Type:	Expression Plasmids
Product Name:	TCEAL5 (NM_001012979) Human Tagged ORF Clone
Tag:	Myc-DDK
Symbol:	TCEAL5
Synonyms:	WEX4
Mammalian Cell Selection:	Neomycin
Vector:	pCMV6-Entry (PS100001)
E. coli Selection:	Kanamycin (25 ug/mL)
ORF Nucleotide Sequence:	>RC217441 ORF sequence Red=Cloning site Blue=ORF Green=Tags(s)

TTTTGTAATACGACTCACTATAGGGCGGCCGGAATTCGTCGACTGGATCCGGTACCGAGGAGATCTGCC
GCCGCGATCGCC

ATGGAAGGCTCTACAAAGAAAATGAAGGAAAGCCAGAGAATGAAAGAAACCTAGAAAGTGAGGGAAAGC
CAGAGGATGAGGGAAGTACAGAAGATGAAGGAAAGTCAGACGAGGAAGAAAGCCGGACATGGAGGGGAA
GACAGAATGCGAGGGAAGCGAGAGGATGAGGGAGAGCCAGGTGATGAGGGACAAGTGAAGATGAGGGA
AACCAGGAAAAGCAGGGCAAGTCTGAAGGTGAGGACAAGCCACAAAGTGAGGGCAAGCCAGCCTCCCAGG
CCAAGCCAGAGAGCCAGCCGCGGCCGCCGAAAAGCGCCCGCTGAAGATTATGTGCCCCGAAAGCAAA
AAGAAAAACCGACAGGGGACGACGATTCCCCCAAGGACTCTCAGGAGGACTTACAAGAAAGGCATCTG
AGCAGTGAGGAGATGATGAGAGAATGTGGAGATGTGTCAAGGGCTCAGGAGGAGCTAAGGAAAAACAGA
AAATGGGTGGTTTTTCATTGGATGCAAAGAGATGTACAGGATCCATTGCCCCAAGGGGCCAACGGGGTGT
GAGGGGAGTGAGGGGCGGAGGTAGGGGCCAGAAAGACTTAGAAGATGTCCCATATGTT

ACGCGTACGCGGCCGCTCGAGCAGAACTCATCTCAGAAGAGGATCTGGCAGCAAATGATATCCTGGATT
ACAAGGATGACGACGATAAGGTTTAA

Protein Sequence:	>RC217441 protein sequence Red=Cloning site Green=Tags(s)
-------------------	--

MEKLYKENEGKPENERNLESEGKPEDEGSTEDEGKSDEEEKPDMEGKTECEGKREDEGEPPGDEGQLEDEG
NQEKQKSEGEDKPKQSEGKPAQAKPESQPRAAEKRAEDYVPRKAKRKTDRTDDSPKDSQEDLQERHL
SSEEMMRECGDVSRAQEELRKKQKMGGFHWMQRDVQDPFAPRGQRGVRGVRGGGRGQKDLEDVPYV

TRTRPLEQKLISEEDLAANDILDYKDDDDKV

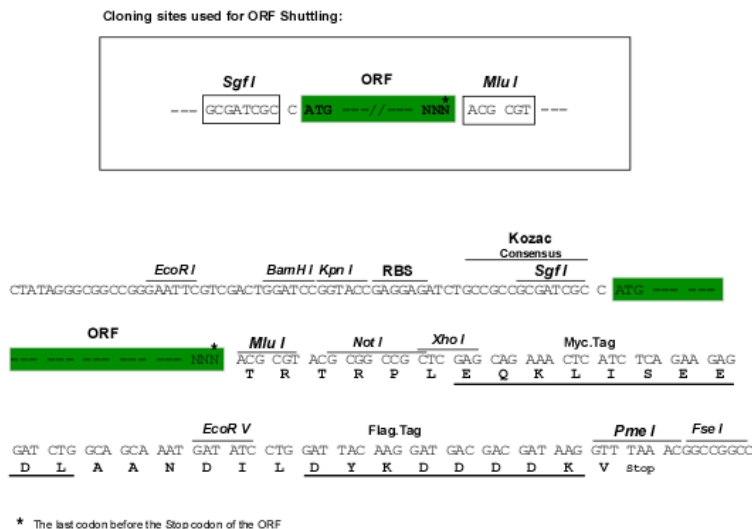


[View online »](#)

Chromatograms: https://cdn.origene.com/chromatograms/mk6471_g08.zip

Restriction Sites: SgfI-MluI

Cloning Scheme:



ACCN: NM_001012979

ORF Size: 618 bp

OTI Disclaimer: The molecular sequence of this clone aligns with the gene accession number as a point of reference only. However, individual transcript sequences of the same gene can differ through naturally occurring variations (e.g. polymorphisms), each with its own valid existence. This clone is substantially in agreement with the reference, but a complete review of all prevailing variants is recommended prior to use. [More info](#)

OTI Annotation: This clone was engineered to express the complete ORF with an expression tag. Expression varies depending on the nature of the gene.

Components: The ORF clone is ion-exchange column purified and shipped in a 2D barcoded Matrix tube containing 10ug of transfection-ready, dried plasmid DNA (reconstitute with 100 ul of water).

Reconstitution Method:

1. Centrifuge at 5,000xg for 5min.
2. Carefully open the tube and add 100ul of sterile water to dissolve the DNA.
3. Close the tube and incubate for 10 minutes at room temperature.
4. Briefly vortex the tube and then do a quick spin (less than 5000xg) to concentrate the liquid at the bottom.
5. Store the suspended plasmid at -20°C. The DNA is stable for at least one year from date of shipping when stored at -20°C.

RefSeq: [NM_001012979.3](#)

RefSeq Size: 1166 bp

RefSeq ORF: 621 bp

Locus ID: 340543

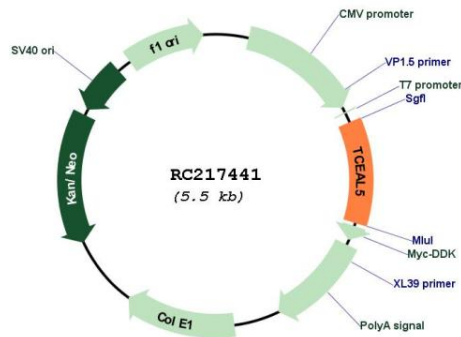
UniProt ID: [Q5H9L2](#)

Cytogenetics: Xq22.1

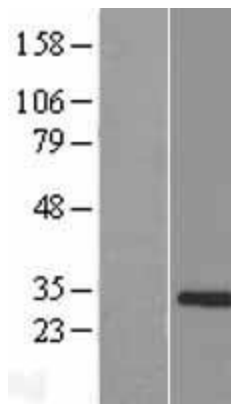
MW: 23.3 kDa

Gene Summary: This gene, which is located on the X chromosome, encodes a protein which contains a BEX (brain expressed X-linked like family) domain. This domain is found in proteins encoded by the TCEAL elongation factor (transcription elongation factor A (SII)-like) gene family also located on the X chromosome. The coding region for this gene is located entirely in the terminal exon. [provided by RefSeq, Sep 2011]

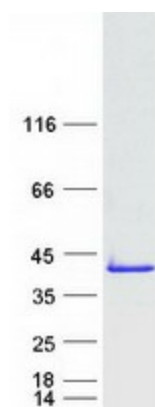
Product images:



Circular map for RC217441



Western blot validation of overexpression lysate (Cat# [LY422941]) using anti-DDK antibody (Cat# [TA50011-100]). Left: Cell lysates from untransfected HEK293T cells; Right: Cell lysates from HEK293T cells transfected with RC217441 using transfection reagent MegaTran 2.0 (Cat# [TT210002]).



Coomassie blue staining of purified TCEAL5 protein (Cat# [TP317441]). The protein was produced from HEK293T cells transfected with TCEAL5 cDNA clone (Cat# RC217441) using MegaTran 2.0 (Cat# [TT210002]).