

Product datasheet for **RC217439**

NPFF1 Receptor (NPFFR1) (NM_022146) Human Tagged ORF Clone

Product data:

Product Type:	Expression Plasmids
Product Name:	NPFF1 Receptor (NPFFR1) (NM_022146) Human Tagged ORF Clone
Tag:	Myc-DDK
Symbol:	NPFF1 Receptor
Synonyms:	GPR147; NPFF1; NPFF1R1; OT7T022
Mammalian Cell Selection:	Neomycin
Vector:	pCMV6-Entry (PS100001)
E. coli Selection:	Kanamycin (25 ug/mL)



[View online »](#)

ORF Nucleotide Sequence:

>RC217439 ORF sequence
 Red=Cloning site Blue=ORF Green=Tags(s)

TTTTGTAATACGACTCACTATAGGGCGGCCGGGAATTCGTCGACTGGATCCGGTACCGAGGAGATCTGCC
 GCC**GCGATCGCC**

ATGGAGGGGGAGCCCTCCAGCCTCCCAACAGCAGTTGGCCCTAAGTCAGAATGGGACTAACACTGAGG
 CCACCCCGGCTACAAACCTCACCTTCTCCTCTACTATCAGCACACCTCCCTGTGGCGGCATGTTTCAT
 TGTGGCCTATGCCTCATCTTCTGCTCTGCATGGTGGGCAACACCCTGGTCTGTTTCATCGTGCTCAAG
 AACCGGCACATGCATACTGTACCAACATGTTTCATCTCAACCTGGCTGTGAGTACCTGCTGGTGGCA
 TCTTCTGCATGCCACCACCTTGTGGACAACCTCATCTACTGGTGGCCCTTCGACAATGCCACATGCAA
 GATGAGCGGCTTGGTGCAGGGCATGTCTGTGTCGGCTTCCGTTTTACACTGGTGGCCATTGCTGTGAA
 AGGTTCCGCTGCATCGTGCACCCCTTCCGCGAGAAGCTGACCCTGCGGAAGGCGCTCGTACCATCGCCG
 TCATCTGGGCCCTGGCGCTGCTCATCATGTGTCCTCGGCCGTACGCTGACCGTACCCGTGAGGAGCA
 CCCTTTCATGGTGGAGCGCCGCAACCGCTCCTACCTCTCTACTCTGCTGGGAGGCCTGGCCCGAGAAG
 GGATGCCAGGGTCTACACCCTGTGCTTCTCGCACATCTACCTGGCGCCGTGGCGCTCATCGTGG
 TCATGTACGCCCCATCGCGCGCAAGCTCTGCCAGGCCCGGGCCCGGCCCGGGGGCGAGGAGGCTGC
 GGACCCGCGAGCATCGCGGCGCAGAGCGCGCTGGTGCACATGCTGGTACATGGTGGCGCTGTTCTTCA
 CTGTCTGGTGGCGCTCTGGCGCTGTGCTGCTCATCGACTACGGGCGCTCAGCGCGCCGAGCTGC
 ACCTGGTACCGTCTACGCCTTCCCTTTCGCGCACTGGCTGGCCTTCTTCAACAGCAGCGCAACCCCAT
 CATCTACGGCTACTTCAACGAGAATTCGCGCGCGCTTCCAGGCCGCTTCCGCGCCGCTCTGCCCG
 CGCCCGTGGGGAGCCACAAGGAGGCTACTCCGAGCGGCCGGGGGCTTCTGCACAGGCGGGTCTTCCG
 TGGTGGTGGCGCCAGCGACTCCGGGCTGCCCTGAGTCGGGCCCTAGCAGTGGGGCCCCAGGCCCGG
 CCGCTCCGCTGCGGAATGGGCGGGTGGCTCACACGGCTTGCCAGGGAAGGGCTGGTGTCTCCAC
 CTGCCCTCACCATTCAGCCTGGGATATCTG

ACGCGTACGCGGCCGCTCGAGCAGAACTCATCTCAGAAGAGGATCTGGCAGCAAATGATATCTGGATT
 ACAAGGATGACGACGATAAGGTTTAA

Protein Sequence:

>RC217439 protein sequence
 Red=Cloning site Green=Tags(s)

MEGEPSPPPNSSWPLSQNGTNEATPATNLTFSSYYQHTSPVAAMFIVAYALIFLLCMVGNLVCFIVLK
 NRHMHTVTNMFILNLAVSDLLVGIFCMPTTLVDNLITGWPFDNATCKMGLVQGMSSVSASFVTLVAIAVE
 RFRCIVHPFREKLTLRKALVTIAVIWALALLIMCPSAVTLTVTREEHHFMVDARNRSYPLYSWEAWPEK
 GMRRVYTTVLFSHIYLAPLALIVVMYARIARKLCQAPGPAPGGEEAADPRASRRRARVVHMLVMVALFFT
 LSWLPLWALLLLIDYQLSAPQLHLVTVYAFPFHWLAFNSSANPIIYGYFNENFRRGFQAAFRARLCP
 RPSGSHKEAYSERPGLLHRRVFVVVRPDSGLPSESGPSSGAPRPGRLPLRNGRVAHHGLPREGPGCSH
 LPLTIPAWDI

TRTRPLEQKLISEEDLAANDILDYKDDDDKV

Chromatograms:

https://cdn.origene.com/chromatograms/mk6440_h04.zip

Restriction Sites:

SgfI-MluI

Cloning Scheme:


ACCN: NM_022146

ORF Size: 1292 bp

OTI Disclaimer: The molecular sequence of this clone aligns with the gene accession number as a point of reference only. However, individual transcript sequences of the same gene can differ through naturally occurring variations (e.g. polymorphisms), each with its own valid existence. This clone is substantially in agreement with the reference, but a complete review of all prevailing variants is recommended prior to use. [More info](#)

OTI Annotation: This clone was engineered to express the complete ORF with an expression tag. Expression varies depending on the nature of the gene.

Components: The ORF clone is ion-exchange column purified and shipped in a 2D barcoded Matrix tube containing 10ug of transfection-ready, dried plasmid DNA (reconstitute with 100 ul of water).

Reconstitution Method:

1. Centrifuge at 5,000xg for 5min.
2. Carefully open the tube and add 100ul of sterile water to dissolve the DNA.
3. Close the tube and incubate for 10 minutes at room temperature.
4. Briefly vortex the tube and then do a quick spin (less than 5000xg) to concentrate the liquid at the bottom.
5. Store the suspended plasmid at -20°C. The DNA is stable for at least one year from date of shipping when stored at -20°C.

RefSeq: [NM_022146.5](#)

RefSeq Size: 1311 bp

RefSeq ORF: 1293 bp

Locus ID: 64106

UniProt ID: [Q9GZQ6](#)

Cytogenetics: 10q22.1

Protein Families: Druggable Genome, Transmembrane

Protein Pathways: Neuroactive ligand-receptor interaction

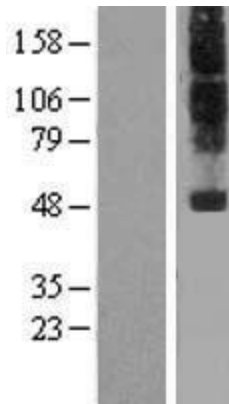
MW: 47.8 kDa

Gene Summary: Receptor for NPAF (A-18-F-amide) and NPFF (F-8-F-amide) neuropeptides, also known as morphine-modulating peptides. Can also be activated by a variety of naturally occurring or synthetic FMRF-amide like ligands. This receptor mediates its action by association with G proteins that activate a phosphatidylinositol-calcium second messenger system. [UniProtKB/Swiss-Prot Function]

Product images:



Circular map for RC217439



Western blot validation of overexpression lysate (Cat# [LY411751]) using anti-DDK antibody (Cat# [TA50011-100]). Left: Cell lysates from untransfected HEK293T cells; Right: Cell lysates from HEK293T cells transfected with RC217439 using transfection reagent MegaTran 2.0 (Cat# [TT210002]).