

## Product datasheet for RC217435

### CCDC153 (NM\_001033658) Human Tagged ORF Clone

#### Product data:

**Product Type:** Expression Plasmids  
**Product Name:** CCDC153 (NM\_001033658) Human Tagged ORF Clone  
**Tag:** Myc-DDK  
**Symbol:** CCDC153  
**Synonyms:** coiled-coil domain containing 153; MGC125447; MGC125447, MGC125448; MGC125448  
**Mammalian Cell Selection:** Neomycin  
**Vector:** pCMV6-Entry (PS100001)  
**E. coli Selection:** Kanamycin (25 ug/mL)  
**ORF Nucleotide Sequence:** >RC217435 representing NM\_001033658  
Red=Cloning site Blue=ORF Green=Tags(s)

TTTTGTAATACGACTCACTATAGGGCGGCCGGAATTCGTCGACTGGATCCGGTACCGAGGAGATCTGCC  
GCC**CGATCGCC**

ATGAGTCGCCAGTGCCATGCCCTGCAGGAGGATATGCAAACCCACAGCAAGCAGCTGGAGGAAGAAGTCA  
AAGGCCTCGGGGCGAGCTAGAGGCATGCCAAAGGGAGGCTGCAGCTGCCGGGAAGAGGCTGAACAAGC  
TCTCGGAGAGCGGGACCAGGCCCTGGCTCAGCTTCGGGCCACATGGCAGACATGGAGGCGAAGTATGAG  
GAAATCTTACACGACAGTCTGGACAGGCTCTTGCCAAGCTGAGAGCCATCAAGCAGCAGTGGGATGGG  
CAGCACTGAGACTTACGCCAGGCACAAGGAGCAGCAACGCCAGTTGGACTCACCCCCCTGGATCTTT  
GAGGCCACCAGCCCTAGTCTC

**ACGCGT**ACGCGGCCGCTCGAGCAGAACTCATCTCAGAAGAGGATCTGGCAGCAAATGATATCCTGGATT  
ACAAGGATGACGACGATAAGGTTTAA

**Protein Sequence:** >RC217435 representing NM\_001033658  
Red=Cloning site Green=Tags(s)

MSRQCHALQEDMQTHSKQLEEEVKGLRGQLEACQREAAAAREEAEQALGERDQALQLRAHMADMEAKYE  
EILHDSLDRLLAKLRAIKQQWDGAALRLHARHKEQQRQFGLTPPGSLRPPAPSL

**TR**TRPLEQKLISEEDLAANDILDYKDDDDKV

**Chromatograms:** [https://cdn.origene.com/chromatograms/mk6447\\_d04.zip](https://cdn.origene.com/chromatograms/mk6447_d04.zip)

**Restriction Sites:** SgfI-MluI



[View online »](#)

**Cloning Scheme:**


**ACCN:** NM\_001033658

**ORF Size:** 372 bp

**OTI Disclaimer:** The molecular sequence of this clone aligns with the gene accession number as a point of reference only. However, individual transcript sequences of the same gene can differ through naturally occurring variations (e.g. polymorphisms), each with its own valid existence. This clone is substantially in agreement with the reference, but a complete review of all prevailing variants is recommended prior to use. [More info](#)

**OTI Annotation:** This clone was engineered to express the complete ORF with an expression tag. Expression varies depending on the nature of the gene.

**Components:** The ORF clone is ion-exchange column purified and shipped in a 2D barcoded Matrix tube containing 10ug of transfection-ready, dried plasmid DNA (reconstitute with 100 ul of water).

- Reconstitution Method:**
1. Centrifuge at 5,000xg for 5min.
  2. Carefully open the tube and add 100ul of sterile water to dissolve the DNA.
  3. Close the tube and incubate for 10 minutes at room temperature.
  4. Briefly vortex the tube and then do a quick spin (less than 5000xg) to concentrate the liquid at the bottom.
  5. Store the suspended plasmid at -20°C. The DNA is stable for at least one year from date of shipping when stored at -20°C.

**RefSeq:** [NM\\_001033658.1](#), [NP\\_001028830.1](#)

**RefSeq Size:** 625 bp

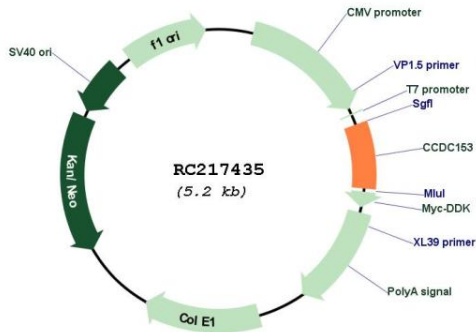
**RefSeq ORF:** 374 bp

**Locus ID:** 283152

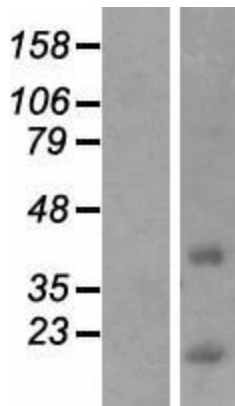
**Cytogenetics:** 11q23.3

MW: 13.9 kDa

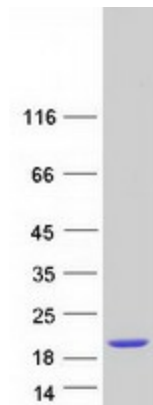
**Product images:**



Circular map for RC217435



Western blot validation of overexpression lysate (Cat# [LY422411]) using anti-DDK antibody (Cat# [TA50011-100]). Left: Cell lysates from untransfected HEK293T cells; Right: Cell lysates from HEK293T cells transfected with RC217435 using transfection reagent MegaTran 2.0 (Cat# [TT210002]).



Coomassie blue staining of purified CCDC153 protein (Cat# [TP317435]). The protein was produced from HEK293T cells transfected with CCDC153 cDNA clone (Cat# RC217435) using MegaTran 2.0 (Cat# [TT210002]).