

Product datasheet for RC217422

BRMS1 (NM_001024957) Human Tagged ORF Clone

Product data:

Product Type:	Expression Plasmids
Product Name:	BRMS1 (NM_001024957) Human Tagged ORF Clone
Tag:	Myc-DDK
Symbol:	BRMS1
Mammalian Cell Selection:	Neomycin
Vector:	pCMV6-Entry (PS100001)
E. coli Selection:	Kanamycin (25 ug/mL)
ORF Nucleotide Sequence:	>RC217422 representing NM_001024957 Red=Cloning site Blue=ORF Green=Tags(s)

TTTTGTAATACGACTCACTATAGGGCGGCCGGGAATTCGTCGACTGGATCCGGTACCGAGGAGATCTGCC
GCC**CGATCGCC**

ATGCCTGTCCAGCCTCCAAGCAAAGACACAGAAGAGATGGAAGCAGAGGGTGATTCTGCTGCTGAGATGA
ATGGGGAGGAGGAAGAGAGTGAGGAGGAGCGGAGCGGCAGCCAGACAGAGTCAGAAGAGGAGAGCTCCGA
GATGGATGATGAGGACTATGAGCGACGCCGACGAGTGTTGTCAGTGAGATGCTGGACCTAGAGAAGCAG
TTCTCGGAGCTAAAGGAGAAGTTGTTTCAGGGAACGACTGAGTCAGCTGCGGTTGCGGCTGGAGGAAGTGG
GGGCTGAGAGAGCCCCTGAATACACGGAGCCCCTTGGGGGCTGCAGCGGAGCCTCAAGATTCGCATTCA
GGTGGCAGGGATCTACAAGGGCTTCTGTCTGGATGTGATCAGGAATAAGTACGAATGTGAGCTGCAGGGA
GCCAAACAGCACCTGGAGAGTGAGAAGCTGCTGCTCTATGACACGCTGCAGGGGGAGCTGCAGGAGCGGA
TCCAGAGGCTGGAGGAGGACCGCCAGAGCCTGGACCTCAGCTCTGAATGGTGGGATGACAAACTGCACGC
CAGAGGCAGCTCCAGGTCTTGGGACTCCCTGCCGCCAGCAAGAGGAAGAAGGCACCTCTGGTTTCTGGC
CCATACATCGTGTACATGCTTCAAGAGATCGACATCCTGGAGGACTGGACAGCCATCAAAAAGGCTAGGG
CAGCTGTGTCCCCTCAGAAGAGAAAATCGGATGACAGGCGGACCCACAGGCCCTCAGGGTCTGCCAGC
CAGGCTCCTGTGGTGTCTGGCCCTCCCACTCCATCTGGCACTGGCCTGGACTCCTCCTGCCCCTC
TCGAGGCTGCACAGCTGTGGCCGTGGAGC

ACGCGTACGCGGCCGCTCGAGCAGAAACTCATCTCAGAAGAGGATCTGGCAGCAAATGATATCCTGGATT
ACAAGGATGACGACGATAAGGTTTAA



[View online »](#)

Protein Sequence: >RC217422 representing NM_001024957
Red=Cloning site Green=Tags(s)

MPVQPPSKDTEEMAEGDSSAAEMNGEEEESEERSGSQTESEESSEMDDYERRRSECVSEMLDLEKQ
 FSELKEKLFRRERLSQLRLRLLEEVGAEAPEYTEPLGGLQRSLKIRIQVAGIYKGFCLDVIRNKYECQLQG
 AKQHLESEKLLL YDTLQGELQERIQRLEEDRQSLDLSSEWDDKLHARGSSRSWDSLPPSKRKKAPLVSG
 PYIVYMLQEIDILEDWTAIKKARAAVSPQKRKSDRRRTHRPLRVCPARLLWCCWALPLHLALAWTPPLPS
 SRPAQLWPWS

TRTRPLEQKLISEEDLAANDILDYKDDDDKV

Chromatograms: https://cdn.origene.com/chromatograms/mk8049_h02.zip

Restriction Sites: SgfI-MluI

Cloning Scheme:

Cloning sites used for ORF Shuttling:



* The last codon before the Stop codon of the ORF

ACCN: NM_001024957

ORF Size: 870 bp

OTI Disclaimer: The molecular sequence of this clone aligns with the gene accession number as a point of reference only. However, individual transcript sequences of the same gene can differ through naturally occurring variations (e.g. polymorphisms), each with its own valid existence. This clone is substantially in agreement with the reference, but a complete review of all prevailing variants is recommended prior to use. [More info](#)

OTI Annotation: This clone was engineered to express the complete ORF with an expression tag. Expression varies depending on the nature of the gene.

Components: The ORF clone is ion-exchange column purified and shipped in a 2D barcoded Matrix tube containing 10ug of transfection-ready, dried plasmid DNA (reconstitute with 100 ul of water).

Reconstitution Method:

1. Centrifuge at 5,000xg for 5min.
2. Carefully open the tube and add 100ul of sterile water to dissolve the DNA.
3. Close the tube and incubate for 10 minutes at room temperature.
4. Briefly vortex the tube and then do a quick spin (less than 5000xg) to concentrate the liquid at the bottom.
5. Store the suspended plasmid at -20°C. The DNA is stable for at least one year from date of shipping when stored at -20°C.

RefSeq: [NM_001024957.2](#)

RefSeq Size: 1360 bp

RefSeq ORF: 873 bp

Locus ID: 25855

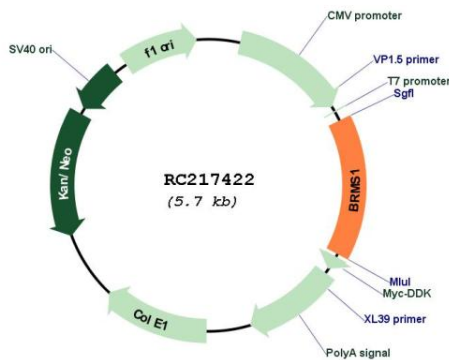
Cytogenetics: 11q13.2

Protein Families: Druggable Genome

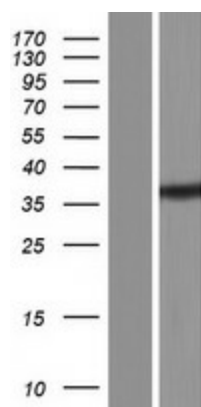
MW: 33.5 kDa

Gene Summary: This gene reduces the metastatic potential, but not the tumorigenicity, of human breast cancer and melanoma cell lines. The protein encoded by this gene localizes primarily to the nucleus and is a component of the mSin3a family of histone deacetylase complexes (HDAC). The protein contains two coiled-coil motifs and several imperfect leucine zipper motifs. Alternative splicing results in two transcript variants encoding different isoforms. [provided by RefSeq, Jul 2008]

Product images:



Circular map for RC217422



Western blot validation of overexpression lysate (Cat# [LY422568]) using anti-DDK antibody (Cat# [TA50011-100]). Left: Cell lysates from untransfected HEK293T cells; Right: Cell lysates from HEK293T cells transfected with RC217422 using transfection reagent MegaTran 2.0 (Cat# [TT210002]).