

Product datasheet for **RC217418**

CNOT4 (NM_013316) Human Tagged ORF Clone

Product data:

Product Type:	Expression Plasmids
Product Name:	CNOT4 (NM_013316) Human Tagged ORF Clone
Tag:	Myc-DDK
Symbol:	CNOT4
Synonyms:	CLONE243; NOT4; NOT4H
Mammalian Cell Selection:	Neomycin
Vector:	pCMV6-Entry (PS100001)
E. coli Selection:	Kanamycin (25 ug/mL)



[View online »](#)

**ORF Nucleotide
Sequence:**

>RC217418 representing NM_013316
 Red=Cloning site Blue=ORF Green=Tags(s)

TTTTGTAATACGACTCACTATAGGGCGGCCGGAATTCGTGACTGGATCCGGTACCGAGGAGATCTGCC
 GCC**CGGATCGCC**

ATGTCTCGCAGTCTGATGCGAAGGAAGACCCTGTGGAGTGCCCTCTTTCATGGAGCCCTGGAGATAG
 ATGATATCAACTTTTCCCTTGACCTGTGGCTACCAGATTTGCCGATTTGTTGGCATCGAATTCGCAC
 TGATGAAAATGGGCTTTGTCTGCATGTAGAAAGCCATATCCAGAAGACCCAGCAGTTTATAAACCACTC
 TCCCAGGAAGAGCTGCAAAGGATAAAGAATGAGAAAAACAGAAACAAAATGAGAGAAAACAGAAAATAT
 CAGAAAATCGCAAACATTTGGCTAGTGTACGTGTCGTACAAAAAACCTCGTCTTTGTTGTAGGTTTATC
 TCAGCGCTAGCAGACCCAGAGGTTTTAAAACGACCAGAATATTTTGGGAAGTTTGGTAAAAACATAAA
 GTTGTCAATAAATAGCACATCATATGCAGGCTCACAGGGTCCAAGTCCAGTGCTTATGTAACCTATA
 TCCGGTCAGAAGACGCTCTCAGAGCCATACAGTGTGTCAACAATGGTAGTAGATGGCAGAACACTTAA
 GGCATCTCTAGGTACAACAAAATACTGCAGTACTTCTTAAAGAATATGCAGTGTCCAAAACCTGACTGC
 ATGTATCTTCATGAATTTGGGGATGAGGCGGCCAGCTTACAAAAGAGGAAATGCAGGCGGGTAAACACC
 AAGAATATGAACAGAAGCTACTTCAAGAATTATATAAATTAATCCCAATTTTCTTCAGCTATCTACGGG
 TTCAGTTGATAAAAAAAGAACAAGTGACACCACTGCAGAGCCCATGACAAAACCTTCAGATTCTCTC
 AGTATAGGGAACGGTGATAATCCCAGCAGATATCTAACAGTGATACGCCTTCACCACCCTGGTTTGT
 CAAAATCCAATCCAGTCATCCCCATCAGTTCATCCAATCACAGTGCACGGTCCCCTTTTGAAGGGGAGT
 AACAGAGTCACAGTCGTTATTCTCAGACATTTTCGCCATCCCAACCCTATCCCAAGTGGGCTTCTCCT
 TTCCCAGCTCCCACAGACATCCAGTACTGGCCTACAGCACCAGAACCACAGAGCCTTTCACATCAG
 AAACAATCCCAGTATCATCTCTACAGACTGGCAAGCAGCTTTTGGCTTTGGTTCTTAAACAACCAGA
 GGATGACTTGGGTTTTGATCCCTTCGATGTCACCTCGAAAAGCCTTAGCAGACCTGATTGAGAAGGAACTG
 TCCGTTCAAGACCAACCTTCCCTTTTCGCCACATCTCTTCAGAATCCTTTCACACACTACAACCGCCA
 AAGGTCCAGGCTCTGGATTCTGCATCCTGCTGCAGCTACAAATGCCAATCTCTCAATAGTACCTTTTC
 AGTCTTGCCCCAGAGTTCCCTCAATTTTCAGCAGCACCAGCGGTTTATAATTCATTAGTTTTCCAGGC
 CAGGCAGCCCGCTATCCTTGGATGGCCTTTCCACGCAATAGCATCATGCCTTGAACCACACAGCAAACC
 CCACCTCAATAGTAATTTCTTGGACTTGAATCTCCCGCCACAGCACAACACAGGTCTGGGAGGGATCCC
 TGTAGCAGGTATCCAGCGTCTTCAGGAAACAGTTTAGACTCTCTCAAGATGACAATCCTCCACACTGG
 CTAATAATCCCTTCAGGCCCTCACAGAGATGGACGGCCCCAGCGTCTCCATCACAGACCCACCACAGCG
 CCCCCTTCAGCACACAGATCCCCTGCACAGAGCCAGTTGGAATCCCTACCCTCCTCTTCAAACCTTC
 CAGCTTCCACTCCCACCCCAGGCTTTCAGACGGCCTTCAGACCCCCAGCAAACCCCCACAGATTTA
 CTACAGAGTTCAACTGGACCGCCAT

ACGCGTACGCGGCCGCTCGAGCAGAAACTCATCTCAGAAGAGGATCTGGCAGCAAATGATATCCTGGATT
 ACAAGGATGACGACGATAAGGTTTAA

Protein Sequence: >RC217418 representing NM_013316
Red=Cloning site Green=Tags(s)

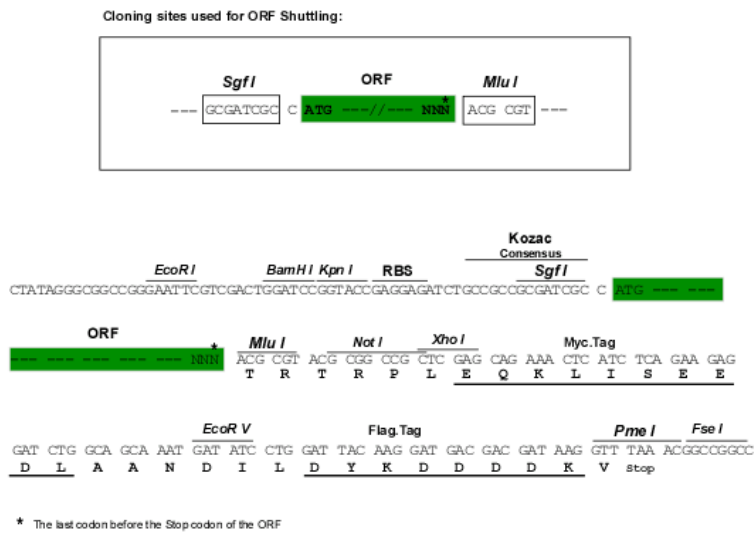
MSRSPDAKEDPVECPLCMEPLEIDDINFFPCTCGYQICRFCWHIRTDENGLCPACRKPYPEDPAVYKPL
 SQEELQRIKNEKKQKQNERKQKISENRKHLASVRVVQKNLVFVVLGSQRLADPEVLKRPEYFGKFGKIHK
 VVINNSTSYAGSQGPSASAYVTYIRSEDALRAIQCVNNVVVDGRTLKASLGTTKYCSYFLKNMQCPKPCD
 MYLHELGDAAASFKEEMQAGKHQEYEQKLLQELYKLNPNFLQLSTGSDKNKNKVTPLQSPIDKPSDSL
 SIGNGDNSQQISNSDTPSPPPGLSKSNPVIPISSSNHSARSPFEGAVTESQSLFSDNFRHPNPIPGLPP
 FPSSPQTSSDWPTAPEPQSLFTSETIPVSSSTDWQAAFGFGSSKQPEDDLGDFDPDVTRKALADLIEKEL
 SVQDQPSLSPTSLQNSSHTTTAKGPGSGFLHPAAATNANSLNSTFSVLPQRFPPQFQHRAYNSFSFPG
 QAARYPWMAFPRNSIMHLNHTANPTSNSNFLDLNLPQHNTGLGGIPVAGIPASSGNSLDSLQDDNPPHW
 LKSLQALTEMDGSAAPSQTHHSAPFSTQIPLHRASWNPYPPPSNPSSFHSPPPGFQAFRPPSKTPTDL
 LQSSTLDRH

TRTRPLEQKLISEEDLAANDILDYKDDDDKV

Chromatograms: https://cdn.origene.com/chromatograms/mg3260_c01.zip

Restriction Sites: Sgfl-MluI

Cloning Scheme:



ACCN: NM_013316

ORF Size: 1917 bp

OTI Disclaimer: Due to the inherent nature of this plasmid, standard methods to replicate additional amounts of DNA in E. coli are highly likely to result in mutations and/or rearrangements. Therefore, OriGene does not guarantee the capability to replicate this plasmid DNA. Additional amounts of DNA can be purchased from OriGene with batch-specific, full-sequence verification at a reduced cost. Please contact our customer care team at custsupport@origene.com or by calling 301.340.3188 option 3 for pricing and delivery.

The molecular sequence of this clone aligns with the gene accession number as a point of reference only. However, individual transcript sequences of the same gene can differ through naturally occurring variations (e.g. polymorphisms), each with its own valid existence. This clone is substantially in agreement with the reference, but a complete review of all prevailing variants is recommended prior to use. [More info](#)

OTI Annotation: This clone was engineered to express the complete ORF with an expression tag. Expression varies depending on the nature of the gene.

Components: The ORF clone is ion-exchange column purified and shipped in a 2D barcoded Matrix tube containing 10ug of transfection-ready, dried plasmid DNA (reconstitute with 100 ul of water).

Reconstitution Method:

1. Centrifuge at 5,000xg for 5min.
2. Carefully open the tube and add 100ul of sterile water to dissolve the DNA.
3. Close the tube and incubate for 10 minutes at room temperature.
4. Briefly vortex the tube and then do a quick spin (less than 5000xg) to concentrate the liquid at the bottom.
5. Store the suspended plasmid at -20°C. The DNA is stable for at least one year from date of shipping when stored at -20°C.

Note: Plasmids are not sterile. For experiments where strict sterility is required, filtration with 0.22um filter is required.

RefSeq: [NM_013316.2](#), [NP_037448.2](#)

RefSeq Size: 3333 bp

RefSeq ORF: 1920 bp

Locus ID: 4850

UniProt ID: [O95628](#)

Cytogenetics: 7q33

Domains: RRM, RRM_1

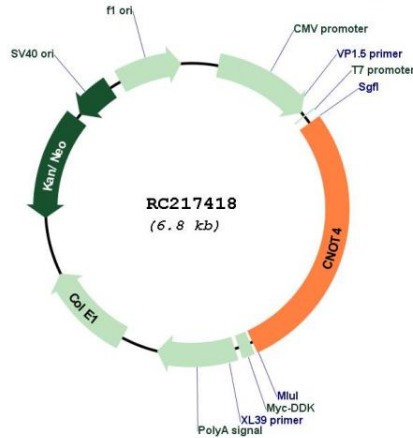
Protein Families: Druggable Genome, Transcription Factors

Protein Pathways: RNA degradation

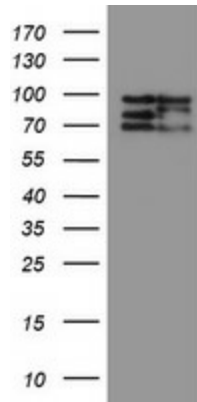
MW: 70.2 kDa

Gene Summary:

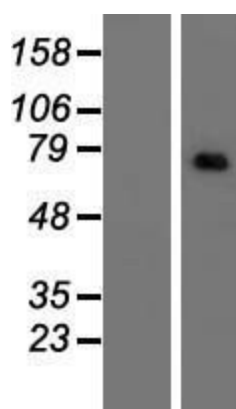
The protein encoded by this gene is a subunit of the CCR4-NOT complex, a global transcriptional regulator. The encoded protein interacts with CNOT1 and has E3 ubiquitin ligase activity. Several transcript variants encoding different isoforms have been found for this gene.[provided by RefSeq, Jul 2010]

Product images:


Circular map for RC217418



HEK293T cells were transfected with the pCMV6-ENTRY control (Cat# [PS100001], Left lane) or pCMV6-ENTRY CNOT4 (Cat# RC217418, Right lane) cDNA for 48 hrs and lysed. Equivalent amounts of cell lysates (5 ug per lane) were separated by SDS-PAGE and immunoblotted with anti-CNOT4(Cat# [TA800157]). Positive lysates [LY415669] (100ug) and [LC415669] (20ug) can be purchased separately from OriGene.



Western blot validation of overexpression lysate (Cat# [LY415669]) using anti-DDK antibody (Cat# [TA50011-100]). Left: Cell lysates from untransfected HEK293T cells; Right: Cell lysates from HEK293T cells transfected with RC217418 using transfection reagent MegaTran 2.0 (Cat# [TT210002]).