

## Product datasheet for RC217417

### MASP1 (NM\_001031849) Human Tagged ORF Clone

#### Product data:

Product Type:	Expression Plasmids
Product Name:	MASP1 (NM_001031849) Human Tagged ORF Clone
Tag:	Myc-DDK
Symbol:	MASP1
Synonyms:	3MC1; CRARF; CRARF1; MAP-1; MAP1; MAp44; MASP; MASP-3; MASP3; PRSS5; RaRF
Mammalian Cell Selection:	Neomycin
Vector:	pCMV6-Entry (PS100001)
E. coli Selection:	Kanamycin (25 ug/mL)
ORF Nucleotide Sequence:	>RC217417 representing NM_001031849 Red=Cloning site Blue=ORF Green=Tags(s)

TTTTGTAATACGACTCACTATAGGGCGGCCGGAATTCGTCGACTGGATCCGGTACCGAGGAGATCTGCC  
GCC**CGGATCGCC**

ATGAGGTGGCTGCTTCTCTATTATGCTCTGTGCTTCTCCCTGTCAAAGGCTTCAGCCACACCGTGGAGC  
TAAACAATATGTTGGCCAGATCCAGTCGCCTGGTTATCCAGACTCCTATCCCAGTGATTCAGAGGTGAC  
TTGGAATATCACTGTCCCAGATGGGTTTCGGATCAAGCTTACTTCATGCACTTCAACTTGAATCCTCC  
TACCTTTGTGAATATGACTATGTGAAGGTAGAACTGAGGACCAGGTGCTGGCAACCTTCTGTGGCAGGG  
AGACCACAGACACAGAGCAGACTCCCGCCAGGAGGTGGTCTCTCCCTGGCTCCTTCATGTCCATCAC  
TTTCCGGTCAGATTTCTCCAATGAGGAGCGTTTCACAGGCTTTGATGCCACTACATGGCTGTGGATGTG  
GACGAGTGCAAGGAGAGGGAGGACGAGGAGCTGTCTGTGACCACTACTGCCACAACATACATTGGCGGCT  
ACTACTGCTCCTGCCGCTTCGGTACATCCTCCACACAGACAACAGGACCTGCCGAGTGGAGTGCAGTGA  
CAACCTTTCACCTCAAAGGACTGGGGTGTACCCAGCCCTGACTTCCCAAACCTTACCCCAAGAGCTCT  
GAATGCCTGTATACCATCGAGCTGGAGGAGGGTTTCATGGTCAACCTGCAGTTTGAGGACATATTTGACA  
TTGAGGACCATCCTGAGGTGCCCTGCCCTATGACTACATCAAGATCAAAGTTGGTCCAAAAGTTTTGGG  
GCCTTTCTGTGGAGAGAAAAGCCCAAGACCCATCAGCACCCAGAGCCACAGTGTCTGATCCTGTTCAT  
AGTGACAACCTCGGAGAGAACCAGGCTGGAGGCTCTCATACAGGCTGCAGGAAATGAGTGCCAGAGC  
TACAGCCTCCTGTCCATGGGAAAATCGAGCCCTCCAAGCAAGTATTTCTTCAAAGACCAAGTGCCTCGT  
CAGCTGTGACACAGGCTACAAAGTGTGAAGGATAATGTGGAGATGGACACATTCCAGATTGAGTGTCTG  
AAGGATGGGACGTGGAGTAAAGATTCCACCTGTAAAAAAATGAAATCGATCTGGAGAGCGAACTCA  
AGTCAGAGCAAGTGACAGAG

**ACGCGT**ACGCGGCCGCTCGAGCAGAACTCATCTCAGAAGAGGATCTGGCAGCAATGATATCCTGGATT  
ACAAGGATGACGACGATAAGGTTTAA



[View online »](#)



**Reconstitution Method:**

1. Centrifuge at 5,000xg for 5min.
2. Carefully open the tube and add 100ul of sterile water to dissolve the DNA.
3. Close the tube and incubate for 10 minutes at room temperature.
4. Briefly vortex the tube and then do a quick spin (less than 5000xg) to concentrate the liquid at the bottom.
5. Store the suspended plasmid at -20°C. The DNA is stable for at least one year from date of shipping when stored at -20°C.

**RefSeq:** [NM\\_001031849.3](#)

**RefSeq Size:** 2072 bp

**RefSeq ORF:** 1143 bp

**Locus ID:** 5648

**UniProt ID:** [P48740](#)

**Cytogenetics:** 3q27.3

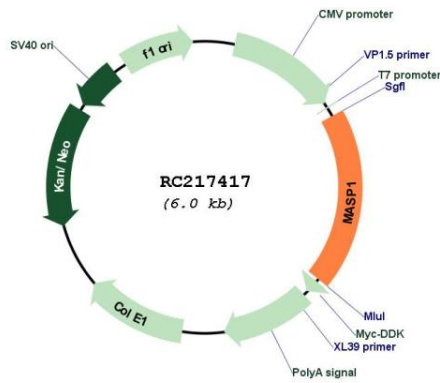
**Protein Families:** Druggable Genome, Protease

**Protein Pathways:** Complement and coagulation cascades

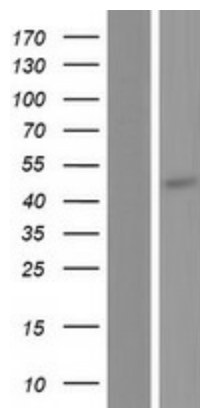
**MW:** 43.5 kDa

**Gene Summary:** This gene encodes a serine protease that functions as a component of the lectin pathway of complement activation. The complement pathway plays an essential role in the innate and adaptive immune response. The encoded protein is synthesized as a zymogen and is activated when it complexes with the pathogen recognition molecules of lectin pathway, the mannose-binding lectin and the ficolins. This protein is not directly involved in complement activation but may play a role as an amplifier of complement activation by cleaving complement C2 or by activating another complement serine protease, MASP-2. The encoded protein is also able to cleave fibrinogen and factor XIII and may be involved in coagulation. A splice variant of this gene which lacks the serine protease domain functions as an inhibitor of the complement pathway. Alternate splicing results in multiple transcript variants.[provided by RefSeq, Apr 2010]

Product images:



Circular map for RC217417



Western blot validation of overexpression lysate (Cat# [LY422206]) using anti-DDK antibody (Cat# [TA50011-100]). Left: Cell lysates from untransfected HEK293T cells; Right: Cell lysates from HEK293T cells transfected with RC217417 using transfection reagent MegaTran 2.0 (Cat# [TT210002]).