

Product datasheet for RC217407

UBE4A (NM_004788) Human Tagged ORF Clone

Product data:

Product Type:	Expression Plasmids
Product Name:	UBE4A (NM_004788) Human Tagged ORF Clone
Tag:	Myc-DDK
Symbol:	UBE4A
Synonyms:	E4; UBOX2; UFD2
Mammalian Cell Selection:	Neomycin
Vector:	pCMV6-Entry (PS100001)
E. coli Selection:	Kanamycin (25 ug/mL)
ORF Nucleotide Sequence:	>RC217407 representing NM_004788 Red=Cloning site Blue=ORF Green=Tags(s)

TTTTGTAATACGACTCACTATAGGGCGGCCGGAATTCGTCGACTGGATCCGGTACCGAGGAGATCTGCC
GCC**CGATCGCC**

ATGACAGACCAGGAGAATAACAACAACATCTCAAGTAACCCCTTTGCTGCTCTTTTTGGCTCCCTGGCTG
ATGCCAAACAGTTTGGCGCAATCCAAAAAGAGCAGCTGAAGCAACAATCTGATGAACTCCAGCTAGCCC
AGATGACTCGGATAATAGCGTGCAGAGAGCCTGGATGAATTCGATTACTCTGTGGCTGAGATTAGCCG
TCATTCCGATCACAGCAGGAAATATGTGAGCAACTCAACATCAATCACATGATCCAAAGGATCTTCCTTA
TTACTCTGGACAACAGTGATCCAGCTTGAAGCGGGAATGGCATCCCTAGCCGTTGTGTGATTTGGAA
AGAAATGGCAGTAGAGCTAGAAGATCAAGACTGGCTTGATATGAGCAATGTTGAGCAGGCCCTCTTCGCT
CGCTTATTACTTCAAGATCCAGGCAACCACTTAATTAACATGACTTCTTCTACAACGCTAAATCTCTCTG
CTGATCGAGATGCAGGAGAGAGGCACATTTTTTGTACCTTTACTCCTGCTTCCAGAGAGCCAAGGAAGA
GATTACCAAAGTTCAGAGAACCTGCTACCCTTTGCAGTGCAGTGCAGAAACCTCACTGTGTCCAATACC
CGAACAGTTCTTCTACCCAGAGATCTATGTTGACCAAAACATCCATGAGCAACTGGTAGATTTGATGT
TAGAAGCCATCCAGGGAGCCCGTGAGTACATGAACAAGATCTATTTGAAGATGTAAGTGTCTGGA
AGAGGTCATTGAAGCCTTGATATTGGATGAGGAAGTTAGAACATTTCCAGAAGTCATGATCCAGTGT
GATATTTTATTGGGCCGAATAAAAGATCTAGAGCTCTGTCAGATCCTTTTGTATGCATATCTGGATATTC
TTCTATTTTCACTAGGCAAAAAGATATGGCAAAGGTTTTTGTAGAATACATTCAGCCCAAGGACCCATC
CAATGGGCAAATGTACCAGAAGACCTTGCTGGGAGTAATTCTGAGTATCTCCTGCTTATTAAGACTCCG
GGTGTGTAGAAAATCATGGCTACTTTTTGAATCCATCTCGTTCCAGCCCCAGGAGATCAAAGTACAGG
AGGCCAACATCCATCAGTTCATGGCTCAGTTCACGAAAAGATCTACCAGATGCTGAAGAAGTACTCCA
GCTCTCTCCAGAAACCAACACTGTATCTTGTCTGGCTTGGAAACTGTTTGCATGCAAATGCAGGCCGC
ACCAAGATTTGGCCAATCAGATGCCAGAAATCTTTTCCAAATGTATGCCTCAGATGCTTTCTTTCTGA
ATCTGGGTGCTGCTCCTGAAGCTATGCCAGCCATTTTGCAAACCCAGATCCTCTCGGCTCCTCACCTT
TAATCCACATACTGTGCCCTCAAGGAGTTGAATGATGAAGAACGAAAAATTAATAATGTACACATGAGA



[View online »](#)

```

GGTTTGGACAAAGAAACCTGTTTGATCCCAGCTGTGCAGGAGCCGAAGTTTCCACAGAACTACAACCTTG
TAACAGAGAACCTTGCTCTGACAGAGTACACCTTGACTTGGGATTTACAGGTTGCATGATCAGATGGT
AAAAATCAACCAAAATCTGCATCGGCTGCAGGTTGCCTGGCGGGATGCTCAGCAAAGTTCTAGCCCTGCT
GCTGACAAATCTTCGTGAGCAGTTTGAACGACTGATGACCATCTATCTTTTACCAAGACTGCCATGACAG
AGCCACAAATGCTACAAAACCTGCCTAACTTGCAGGTGCATGGCTGTTCTACTGGTCAACTGGCCAT
AGGCAATGAGGGCTCACAGCCAATAGAGCTAACCTTTCCCTTTGCCAGATGGCTACAGCTCTTTGGCTTAT
GTGCCAGAAATTTTTGCAGATAACCTGGGTGATTTTCTCATTCTTCTCCGCCGCTTTGCCGATGACATTT
TGGAGACATCAGCAGATTCCTGGAGCATGTCTTCACTTTATCACCATTTTCACTGGAAGCATAGAAAG
AATGAAGAATCCCCACCTGAGGGCCAACTAGCAGAGGTGTTGGAAGCAGTGATGCCCCACCTGGATCAG
ACCCCAAATCCCTTGGTATCCAGTGTGTTCCACCGGAAACGTGTGTTCTGCAACTTTCAGTATGCACCCC
AACTTGCAGAGGCTCTAATCAAGGTTTTGTGGACATCGAATTTACAGGAGACCCCATCAATTTGAACA
GAAGTTTAATTACCGCCGCTCCATGTATCTATCCTAAGATACATGTGGGGGACAGATACCTATCGGGAG
AGCATTAAAGATTTGGCTGACTATGCCTCTAAGAAATTTAGAAGCCATGAATCCCCACTTTTCTCCGCT
TTCTTAACCTGCTAATGAATGATGCCATCTTCTTTGGATGAAGCCATACAGTATTTGAGCAAGATAAA
GATTCAGCAAATGAGAAGGATCGAGGTGAATGGGATAGTCTGACTCCAGAAGCCCGCCGAGAAAAGGAG
GCTGGCCCTACAGATGTTTGGACAGCTGGCACGTTTCCATAACATCATGTCCAATGAAACAATCGGTACCC
TTGCCTTTCTCACATCAGAGATCAAGTCACTCTTTGTGCATCCCTTCTGGCTGAGCGCATCATCTCCAT
GTTGAACTACTTCTGCAACACCTGTTGGCCCAAGATGGGTGCCTTAAAAGTCAAGGACTTCAGCGAA
TTTGACTTCAAACCCAGCAGCTTGATCAGATATCTGCACTATCTACTTAAATCTTGGGGATGAGGAGA
ATTTCTGTGCCACTGTGCCCAAGGATGGACGTTCTATTTCCCAACTCTCTTTCACAGACAGATTCGAGT
CTTGAAGAAAATAAATAAGCCTGGGAATATGATTATGGCTTTAGCAACTGGCAGAGAGAATCAAGTCT
CTTGACACCTCCAACAACAGGAAGAGGAAACCTATGCAGATGCCTGTGATGAGTCTCGGATCCCATTA
TGACACACTGATGTGTACCCTGTGGTGTGCCATCTCCAGAGTCACTGTGGATAGATCCACCATTGC
AAGACATTTGCTCAGTGACCAAAACAGATCCCTTTAACCGTAGTCCCTCACCATGGACAGATCCGGCCA
AACACAGAATAAAAGAAAAAATCCAACGGTGGCTTGACAGAGAGGAAACAACAAAAGGAGCAACTTGAA

```

ACGCGTACGCGGCCGCTCGAGCAGAACTCATCTCAGAAGAGGATCTGGCAGCAATGATATCCTGGATT
ACAAGGATGACGACGATAAGGTTTAA

Protein Sequence:

>RC217407 representing NM_004788

Red=Cloning site Green=Tags(s)

```

MTDQENNNNISSNPF AALFGSLADAKQFAAIQKEQLKQQSDELPASPDDSDNSVSESLDEFDYSVAEISR
SFRSQQEICEQLNINHMIQRIFLITLDNSDPSLKSGNGIPSRVYLEEMAVELEDQDWLDMNSVEQALFA
RLLLQDPGNHLINMTSSTLNL SADR DAGERHIFCYLYSCFQRAKEEITKVPENLLPFVAVQCRNLTVSNT
RTVLLTPEIYVDQNIHEQLVDLMLEAIQGAREYMNKIYFEDVTEFLEEVI EALILDEEVRTFPEVMIPVF
DILLGRIKDLELCQILLYAYLDILLYFTRQKDMAKVFVEYIQPKDPTNGQMYQKTL LGVILSISCLL KTP
GVVENHGYFLNPSRSPQEIKVQEANIHQFMAQFHEKIYQMLKNLLQLSPETKHCILSWLGNCLHANAGR
TKIWANQMP EIFFQMYASDAFFLNLGAALLKLCQPFCKPRSSRLTFNPTYCALKELNDEERKIKNVHMR
GLDKETCLIPAVQEPKFPQNYNLVTENLALTEYTYLGFHRLHDQMVKINQNLHRLQVAVWRDAQSSSPA
ADNLRQFERLMTIYLSKTAMTEPQMLQNLNLQVSMVLLVQLAIGNEGSQPIELTFPLPDGYSLLAY
VPEFFADNLGDFLIFLRRFADDILETSADSL EHVLFITIFTGSIERMKNPHLRAKLAEVLEAVMPLDQ
TPNPLVSSVFHRKRVFCNFQYAPQLAEALIKVFDIEFTGDPHQFEQKFNYRRMPYILRYMWTDTYRE
SIKDLADYASKNLEAMNPPLFLRFLNLLMND AIFLLDEAIQYL SKIKIQQIEKDRGEWDSLTP EARREKE
AGLQMFQQLARFHNIMSNETIGTLAFLTSEIKSLFVHPFLAERII SMLNYFLQHLVGPKM GALKVKDFSE
FDFKPPQLVSDICTIYLN LGDEENFCATVPKDRSYSPTLFAQT VVRVLLKINKPGNMIMAFSNLAERIKS
LADLQQEEETYADACDEF LDPIMSTLMCDPVVLPSSRVTVDRSTIARHLLSDQTPDFNRSPLTMDQIRP
NTELKEKIQRWLAERKQKQEQLE

```

TRTRPLEQKLISEEDLAANDILDYKDDDDKV

Chromatograms:

https://cdn.origene.com/chromatograms/mk8015_c04.zip

Restriction Sites: SgfI-MluI

Cloning Scheme:



ACCN: NM_004788

ORF Size: 3219 bp

OTI Disclaimer: The molecular sequence of this clone aligns with the gene accession number as a point of reference only. However, individual transcript sequences of the same gene can differ through naturally occurring variations (e.g. polymorphisms), each with its own valid existence. This clone is substantially in agreement with the reference, but a complete review of all prevailing variants is recommended prior to use. [More info](#)

OTI Annotation: This clone was engineered to express the complete ORF with an expression tag. Expression varies depending on the nature of the gene.

Components: The ORF clone is ion-exchange column purified and shipped in a 2D barcoded Matrix tube containing 10ug of transfection-ready, dried plasmid DNA (reconstitute with 100 ul of water).

Reconstitution Method:

1. Centrifuge at 5,000xg for 5min.
2. Carefully open the tube and add 100ul of sterile water to dissolve the DNA.
3. Close the tube and incubate for 10 minutes at room temperature.
4. Briefly vortex the tube and then do a quick spin (less than 5000xg) to concentrate the liquid at the bottom.
5. Store the suspended plasmid at -20°C. The DNA is stable for at least one year from date of shipping when stored at -20°C.

RefSeq: [NM_004788.4](#)

RefSeq Size: 6138 bp

RefSeq ORF: 3222 bp

Locus ID: 9354

UniProt ID: [Q14139](#)

Cytogenetics: 11q23.3

Domains: U-box

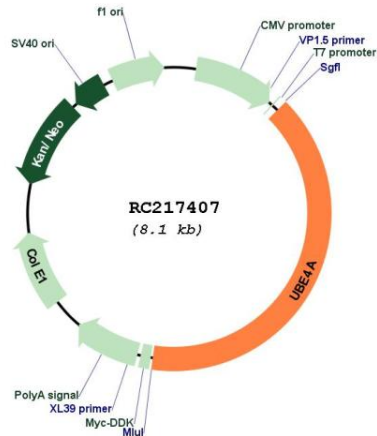
Protein Families: Druggable Genome

Protein Pathways: Ubiquitin mediated proteolysis

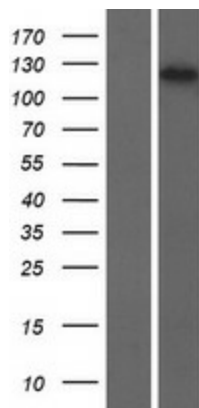
MW: 123.3 kDa

Gene Summary: This gene encodes a member of the U-box ubiquitin ligase family. The encoded protein is involved in multiubiquitin chain assembly and plays a critical role in chromosome condensation and separation through the polyubiquitination of securin. Autoantibodies against the encoded protein may be markers for scleroderma and Crohn's disease. A pseudogene of this gene is located on the long arm of chromosome 3. Alternatively spliced transcript variants encoding multiple isoforms have been observed for this gene. [provided by RefSeq, Feb 2011]

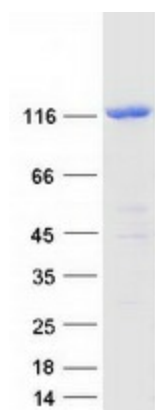
Product images:



Circular map for RC217407



Western blot validation of overexpression lysate (Cat# [LY417750]) using anti-DDK antibody (Cat# [TA50011-100]). Left: Cell lysates from untransfected HEK293T cells; Right: Cell lysates from HEK293T cells transfected with RC217407 using transfection reagent MegaTran 2.0 (Cat# [TT210002]).



Coomassie blue staining of purified UBE4A protein (Cat# [TP317407]). The protein was produced from HEK293T cells transfected with UBE4A cDNA clone (Cat# RC217407) using MegaTran 2.0 (Cat# [TT210002]).