

Product datasheet for RC217406

VGLL2 (NM_182645) Human Tagged ORF Clone

Product data:

Product Type:	Expression Plasmids
Product Name:	VGLL2 (NM_182645) Human Tagged ORF Clone
Tag:	Myc-DDK
Symbol:	VGLL2
Synonyms:	VGL2; VITO1
Mammalian Cell Selection:	Neomycin
Vector:	pCMV6-Entry (PS100001)
E. coli Selection:	Kanamycin (25 ug/mL)
ORF Nucleotide Sequence:	>RC217406 representing NM_182645 Red=Cloning site Blue=ORF Green=Tags(s)

TTTTGTAATACGACTCACTATAGGGCGCCGGGAATTCGTCGACTGGATCCGGTACCGAGGAGATCTGCC
GCC**CGATCGCC**

ATGAGCTGTCTGGATGTTATGTACCAAGTCTATGGTCCTCCGCAGCCCTACTTCGCAGCCGCTACACCC
CCTACCACCAGAACTAGCCTATTATTCAAAATGCAGGAAGCGCAGGAGTGCAATGCCAGCCCCAGCAG
CAGTGGCAGCGGCAGCTCCTCATTTCCAGCCAAACCCAGCCAGTATAAAAGAGGAAGAAGGCAGCCCA
GAGAAAGAGCGCCACCAGAGGCAGAGTACATCAACTCCCCTGCGTCTTCACTTATTTCCAGGGGG
ACATCAGCTCCGTGGTGGATGAACATTTAGCAGGGCCCTGAGCCAACCCAGCAGCTACTCTCCTAGCTG
TACCAGCAGCAAAGCACCAAGGAGCTCTGGGCCCTGGCGAGACTGCTCCTTCCCGATGAGCCAGCGCAGC
TTCCCCGCCTCCTTCTGGAATAGCGCGTACCAGGGCCAGTGCCCCGCCGCTGGGCAGCCCTCTGGCCA
CCGCGCACTCGGAGCTGCCCTTCGCCGCCGCCGACCCCTACTCGCCCGCCGCGTGCATGGCCACCTGCA
CCAGGGGCCACGGAGCCCTGGCACCACGCGCACCCGACACGCGCACCCGCATCACCCCTACGCCCTG
GGCGGCGCCCTCGGCGCCAGGCCGCCCTACCCGCGCCCGCCGCGTGCACGAAGTCTACGCGCCGC
ACTTCGACCCGCGCTATGGGCCGCTGCTGATGCCAGCCGCTCGGGGCGCCCGCCGCTCGCAACCCG
CCCGGCGCCCGCCCGGCGAGTCTCCTGCGAGCTCTCCGGCAAAGGCGAGCCGGCGGGCGCCGCTGG
GCCGGGCCGGGGACCTTCGCGAGCCCTCGGGGACGTGGCCAGGGTCTGGCCCTCAGCGTGGACT
CAGCTCGTCGTTATTCCTCTGTGGTGCATCCCTCCTGAGC

ACGCGTACGCGGCCGCTCGAGCAGAACTCATCTCAGAAGAGGATCTGGCAGCAAATGATATCCTGGATT
ACAAGGATGACGACGATAAGGTTTAA



[View online »](#)

Protein Sequence: >RC217406 representing NM_182645
Red=Cloning site Green=Tags(s)

MSCLDVMYQVYGPPQPYFAAAYTPYHQKLAYYSKMQEAQECNASPSSSGSGSSSFSSQTPASIKEEEGSP
 EKERPPEAEYINSRCVLFTYFQGDISSVDEHFSRALSQPSSYSPSCTSSKAPRSSGPWRDCSFPMQRS
 FPASFWNSAYQAPVPPPLGSPLATAHSELPFAAADPYSPAALHGHHLHQGATEPWHHAHPHHPHPYAL
 GGALGAQAAPYPRPAAVHEVYAPHFDPRYGPLLMPAASGRPARLATAPAPAGSPPEL SGKGEPAGAAM
 AGPGGPFASPSGDVAQGLGLSVDSARRYSL CGASLLS

TRTRPLEQKLISEEDLAANDILDYKDDDDKV

Chromatograms: https://cdn.origene.com/chromatograms/ja1032_d08.zip

Restriction Sites: SgfI-MluI

Cloning Scheme:



ACCN: NM_182645

ORF Size: 951 bp

OTI Disclaimer: The molecular sequence of this clone aligns with the gene accession number as a point of reference only. However, individual transcript sequences of the same gene can differ through naturally occurring variations (e.g. polymorphisms), each with its own valid existence. This clone is substantially in agreement with the reference, but a complete review of all prevailing variants is recommended prior to use. [More info](#)

OTI Annotation: This clone was engineered to express the complete ORF with an expression tag. Expression varies depending on the nature of the gene.

Components: The ORF clone is ion-exchange column purified and shipped in a 2D barcoded Matrix tube containing 10ug of transfection-ready, dried plasmid DNA (reconstitute with 100 ul of water).

Reconstitution Method:

1. Centrifuge at 5,000xg for 5min.
2. Carefully open the tube and add 100ul of sterile water to dissolve the DNA.
3. Close the tube and incubate for 10 minutes at room temperature.
4. Briefly vortex the tube and then do a quick spin (less than 5000xg) to concentrate the liquid at the bottom.
5. Store the suspended plasmid at -20°C. The DNA is stable for at least one year from date of shipping when stored at -20°C.

RefSeq: [NM_182645.3](#), [NP_872586.1](#)

RefSeq Size: 2212 bp

RefSeq ORF: 954 bp

Locus ID: 245806

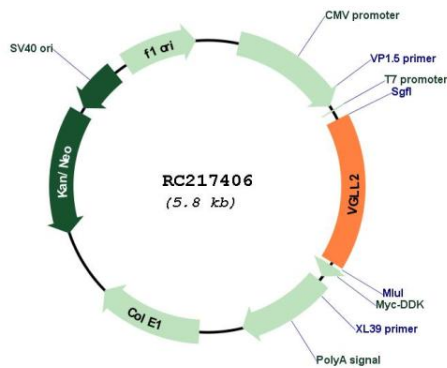
UniProt ID: [Q8N8G2](#)

Cytogenetics: 6q22.1

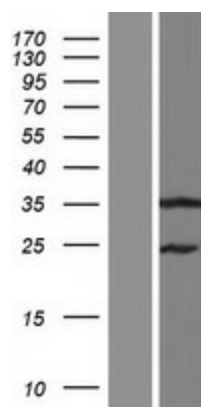
MW: 33.2 kDa

Gene Summary: This gene encodes a protein with a transcriptional enhancer factor 1 (TEF-1) interaction domain. The encoded protein may act as a co-factor of TEF-1 regulated gene expression during skeletal muscle development. Alternatively spliced transcript variants encoding multiple isoforms have been observed. [provided by RefSeq, Jul 2012]

Product images:



Circular map for RC217406



Western blot validation of overexpression lysate (Cat# [LY405429]) using anti-DDK antibody (Cat# [TA50011-100]). Left: Cell lysates from untransfected HEK293T cells; Right: Cell lysates from HEK293T cells transfected with RC217406 using transfection reagent MegaTran 2.0 (Cat# [TT210002]).