

Product datasheet for **RC217404**

RASSF2 (NM_170774) Human Tagged ORF Clone

Product data:

Product Type:	Expression Plasmids
Product Name:	RASSF2 (NM_170774) Human Tagged ORF Clone
Tag:	Myc-DDK
Symbol:	RASSF2
Synonyms:	CENP-34; RASFADIN
Mammalian Cell Selection:	Neomycin
Vector:	pCMV6-Entry (PS100001)
E. coli Selection:	Kanamycin (25 ug/mL)
ORF Nucleotide Sequence:	>RC217404 ORF sequence Red=Cloning site Blue=ORF Green=Tags(s)

TTTTGTAATACGACTCACTATAGGGCGGCCGGAATTCGTCGACTGGATCCGGTACCGAGGAGATCTGCC
GCC**CGATCGCC**

ATGGACTACAGCCACCAAACGTCCTAGTCCCATGTGGACAAGATAAATACATTTCCAAAAATGAACTTC
TCTTGCACTGAAGACCTACAACCTGTACTATGAAGGCCAGAATTTACAGCTCCGGCACCAGGAGGAAGA
AGACGAGTTCATTGTGGAGGGGCTCCTGAACATCTCTGGGGCCTGCGCCGGCCATTGCGCTGCAGATG
CAGGATGACAACGAACGCATTCGACCCCTCCATCCTCCTCCTGGCACTCTGGCTGTAACTGGGG
CTCAGGGAACCACTCTGAAGCCCTGACTGTGCCAAAGTTCAGATCTCAGAGGTGGATGCCCGCCGGA
GGGTGACCAGATGCCAAGCTCCACAGACTCCAGGGCCTGAAGCCCTGCAGGAGGACACCCACAGCTG
ATGCGCACACGCAGTGATGTTGGGTGCGTCGCGTGGCAATGTGAGGACGCCTAGTGACCAGCGCGGAA
TCAGACGCCACCGCTTCCATCAACGGCCATTCTACAACATAAGACATCCGTGTTACACACGACCTA
TGGCTCTGTACCAACGTCGCAATCAACAGCACCATGACCACCCACAGGTCCTGAAGCTGCTGCTCAAC
AAATTTAAGATTGAGAATTCAGCAGAGGAGTTGCCTTGTACGTGGTCCATACGAGTGGTGAAGAAACA
AGCTGAAGGCCACCGATTACCCGCTGATTGCCGAATCCTCAGGGCCATGTGAGCAGATCTCCAAAGT
GTTCTAATGGAGAAGGACAGGTGGAGGAAGTCACTACGACGTGGCCAGTATATAAAGTTCGAGATG
CCGGTACTTAAAAGCTTCATTAGAAGCTCCAGGAGGAAGAAGATCGGGAAGTAAAGAAGCTGATGCGCA
AGTACACCGTGTCCGGTAATGATTCGACAGAGGCTGGAGGAGATAGCCGAGACCCAGCAACAATC

ACGCGTACGCGGCCGCTCGAGCAGAAACTCATCTCAGAAGAGGATCTGGCAGCAATGATATCCTGGATT
ACAAGGATGACGACGATAAGGTTTAA



[View online »](#)

Protein Sequence: >RC217404 protein sequence
Red=Cloning site Green=Tags(s)

MDYSHQTSLVPCGQDKYISKNEILLHLKTYNLYYEGQNLQLRHREEEDEFIVEGLLNISWGLRRP IRLQM
 QDDNERIRPPSSSSWHSGCNLGAQGTTLKPLTPVKVQISEVDAPPEGDQMPSSSTDSRGLKPLQEDTPQL
 MRTRSDVGVRRRGNV RTPSDQRRIRRRHRF SINGHFYNHKT SVF TPAYG SVTNVRINSTMTTPQVLKLLN
 KFKIENSAEEFALYVVHTSGEKQKLKATDYPLIARILQGPCEQISKVFLMEKDQVEEVTYDVAQYIKFEM
 PVLKSF IQKLQEEEDREVKKLMRKYT VLR LRMIRQRLEEIAETPATI

TRTRPLEQKLISEEDLAANDILDYKDDDDKV

Chromatograms: https://cdn.origene.com/chromatograms/mk6610_d10.zip

Restriction Sites: SgfI-MluI

Cloning Scheme:



ACCN: NM_170774

ORF Size: 978 bp

OTI Disclaimer: The molecular sequence of this clone aligns with the gene accession number as a point of reference only. However, individual transcript sequences of the same gene can differ through naturally occurring variations (e.g. polymorphisms), each with its own valid existence. This clone is substantially in agreement with the reference, but a complete review of all prevailing variants is recommended prior to use. [More info](#)

OTI Annotation: This clone was engineered to express the complete ORF with an expression tag. Expression varies depending on the nature of the gene.

Components: The ORF clone is ion-exchange column purified and shipped in a 2D barcoded Matrix tube containing 10ug of transfection-ready, dried plasmid DNA (reconstitute with 100 ul of water).

Reconstitution Method:

1. Centrifuge at 5,000xg for 5min.
2. Carefully open the tube and add 100ul of sterile water to dissolve the DNA.
3. Close the tube and incubate for 10 minutes at room temperature.
4. Briefly vortex the tube and then do a quick spin (less than 5000xg) to concentrate the liquid at the bottom.
5. Store the suspended plasmid at -20°C. The DNA is stable for at least one year from date of shipping when stored at -20°C.

RefSeq: [NM_170774.1](#), [NP_739580.1](#)

RefSeq Size: 5307 bp

RefSeq ORF: 981 bp

Locus ID: 9770

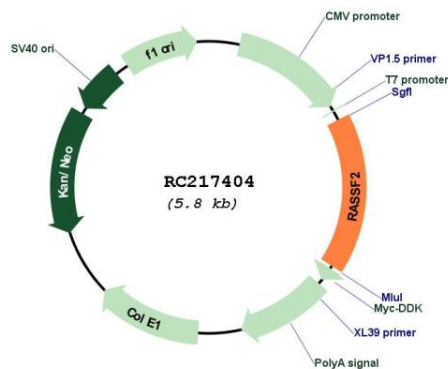
UniProt ID: [P50749](#)

Cytogenetics: 20p13

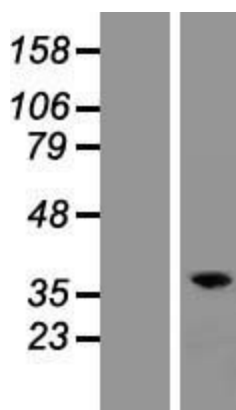
MW: 37.8 kDa

Gene Summary: This gene encodes a protein that contains a Ras association domain. Similar to its cattle and sheep counterparts, this gene is located near the prion gene. Two alternatively spliced transcripts encoding the same isoform have been reported. [provided by RefSeq, Jul 2008]

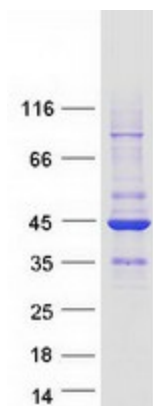
Product images:



Circular map for RC217404



Western blot validation of overexpression lysate (Cat# [LY406875]) using anti-DDK antibody (Cat# [TA50011-100]). Left: Cell lysates from untransfected HEK293T cells; Right: Cell lysates from HEK293T cells transfected with RC217404 using transfection reagent MegaTran 2.0 (Cat# [TT210002]).



Coomassie blue staining of purified RASSF2 protein (Cat# [TP317404]). The protein was produced from HEK293T cells transfected with RASSF2 cDNA clone (Cat# RC217404) using MegaTran 2.0 (Cat# [TT210002]).