

Product datasheet for RC217397

CBLN3 (NM_001039771) Human Tagged ORF Clone

Product data:

Product Type:	Expression Plasmids
Product Name:	CBLN3 (NM_001039771) Human Tagged ORF Clone
Tag:	Myc-DDK
Symbol:	CBLN3
Synonyms:	PRO1486
Mammalian Cell Selection:	Neomycin
Vector:	pCMV6-Entry (PS100001)
E. coli Selection:	Kanamycin (25 ug/mL)
ORF Nucleotide Sequence:	>RC217397 representing NM_001039771 Red=Cloning site Blue=ORF Green=Tags(s)

TTTGTGTAATACGACTCACTATAGGGCGGCCGGAATTCGTCGACTGGATCCGGTACCGAGGAGATCTGCC
 GCCGCGATCGCC

ATGTTGGGAGCCAAGCCACACTGGCTACCAGTCCCCTACACAGTCCCGGGCTGCCCTTGGTTCTGGTGC
 TTCTGGCCCTGGGGGCCGGGTGGGCCAGGAGGGGTGAGAGCCCGTCTGCTGGAGGGGAGTGCCTGGT
 GGTCTGTGAGCTGGCCGAGCTGCTGCAGGGGGGCCGGGGAGCAGCCCTGGGAGAGGCACCCCTGGG
 CGAGTGGCATTGCTGCGGTCCGAAGCCACCACCATGAGCCAGCAGGGGAAACCGCAATGGCACCAGTG
 GGGCCATCTACTCGACCAGTCTGGTGAACGAGGGCGGTGGCTTTGACCGGGCTCTGGCTCCTTCGT
 AGCCCCGTGTCGGGGTGTCTACAGCTTCCGGTTCCATGTGGTGAAGGTGTACAACCGCCAACTGTCCAG
 GTGAGCCTGATGCTGAACACGTGGCCTGTCTCAGCCTTTGCCAATGATCCTGACGTGACCCGGGAGG
 CAGCCACCAGCTCTGTGCTACTGCCCTTGACCCTGGGGACCGAGTGTCTCTGCGCTGCGTCGGGGGAA
 TCTACTGGGTGGTTGAAATACTCAAGTTTCTCTGGCTTCCTCATCTTCCTCTC

ACGCGTACGCGGCCGCTCGAGCAGAACTCATCTCAGAAGAGGATCTGGCAGCAAATGATATCCTGGATT
 ACAAGGATGACGACGATAAGGTTTAA

Protein Sequence:	>RC217397 representing NM_001039771 Red=Cloning site Green=Tags(s)
-------------------	-----------------------------------------------------------------------

MLGAKPHWLPGLHSPGLPLVLLALGAGWAQEGSEPVLLGECLVCEPGRAAAGGPGGAALGEAPPG
 RVAFAAVRSHHHEPAGETGNGTSGAIYFDQVLVNEGGGFDASGSFVAPVRGVYSFRFHVKVYNRQTVQ
 VSLMLNTWPVISAFANDPDVTREAAATSSVLLPLDPGDRVSLRLRRGNLLGWKYSSFSGFLIFPL

TRTRPLEQKLISEEDLAANDILDYKDDDDKV


[View online »](#)

Chromatograms: https://cdn.origene.com/chromatograms/mk8005_a10.zip

Restriction Sites: SgfI-MluI

Cloning Scheme:



ACCN: NM_001039771

ORF Size: 615 bp

OTI Disclaimer: The molecular sequence of this clone aligns with the gene accession number as a point of reference only. However, individual transcript sequences of the same gene can differ through naturally occurring variations (e.g. polymorphisms), each with its own valid existence. This clone is substantially in agreement with the reference, but a complete review of all prevailing variants is recommended prior to use. [More info](#)

OTI Annotation: This clone was engineered to express the complete ORF with an expression tag. Expression varies depending on the nature of the gene.

Components: The ORF clone is ion-exchange column purified and shipped in a 2D barcoded Matrix tube containing 10ug of transfection-ready, dried plasmid DNA (reconstitute with 100 ul of water).

Reconstitution Method:

1. Centrifuge at 5,000xg for 5min.
2. Carefully open the tube and add 100ul of sterile water to dissolve the DNA.
3. Close the tube and incubate for 10 minutes at room temperature.
4. Briefly vortex the tube and then do a quick spin (less than 5000xg) to concentrate the liquid at the bottom.
5. Store the suspended plasmid at -20°C. The DNA is stable for at least one year from date of shipping when stored at -20°C.

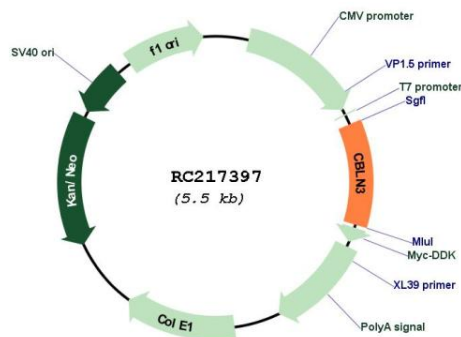
Note: Plasmids are not sterile. For experiments where strict sterility is required, filtration with 0.22um filter is required.

RefSeq: [NM_001039771.3](#)

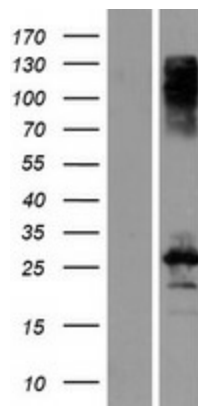
RefSeq Size: 2340 bp

RefSeq ORF:	618 bp
Locus ID:	643866
UniProt ID:	Q6UW01
Cytogenetics:	14q12
Protein Families:	Secreted Protein
MW:	21.3 kDa
Gene Summary:	Members of the precerebellin family, such as CBLN3, contain a cerebellin motif (see CBLN1; MIM 600432) and a C-terminal C1q signature domain (see MIM 120550) that mediates trimeric assembly of atypical collagen complexes. However, precerebellins do not contain a collagen motif, suggesting that they are not conventional components of the extracellular matrix (Pang et al., 2000 [PubMed 10964938]).[supplied by OMIM, Aug 2009]

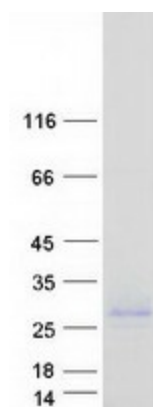
Product images:



Circular map for RC217397



Western blot validation of overexpression lysate (Cat# [LY421824]) using anti-DDK antibody (Cat# [TA50011-100]). Left: Cell lysates from untransfected HEK293T cells; Right: Cell lysates from HEK293T cells transfected with RC217397 using transfection reagent MegaTran 2.0 (Cat# [TT210002]).



Coomassie blue staining of purified CBLN3 protein (Cat# [TP317397]). The protein was produced from HEK293T cells transfected with CBLN3 cDNA clone (Cat# RC217397) using MegaTran 2.0 (Cat# [TT210002]).