

Product datasheet for **RC217390**

HP1BP3 (NM_016287) Human Tagged ORF Clone

Product data:

Product Type:	Expression Plasmids
Product Name:	HP1BP3 (NM_016287) Human Tagged ORF Clone
Tag:	Myc-DDK
Symbol:	HP1BP3
Synonyms:	HP1-BP74; HP1BP74
Mammalian Cell Selection:	Neomycin
Vector:	pCMV6-Entry (PS100001)
E. coli Selection:	Kanamycin (25 ug/mL)



[View online »](#)

ORF Nucleotide Sequence:

>RC217390 representing NM_016287
 Red=Cloning site Blue=ORF Green=Tags(s)

TTTTGTAATACGACTCACTATAGGGCGGCCGGAATTCGTCGACTGGATCCGGTACCGAGGAGATCTGCC
 GCC**CGGATCGCC**

ATGGCGACTGATACGTCTCAAGGTGAACCTCGTCCATCCTAAGGCACTCCCACTTATAGTAGGAGCTCAGC
 TGATCCACGCGGACAAGTTAGGTGAGAAGGTAGAAGATAGCACCATGCCGATTCTGCGAAGTGTGAATTC
 TACCCGGGAAACTCCTCCAAAAGCAAGCTTGCTGAAGGGGAGGAAGAAAAGCCAGAACCAGACATAAGT
 TCAGAGGAATCTGTCTCCACTGTAGAAGAACAAGAGAATGAAACTCCACCTGCTACTTCGAGTGAGGCAG
 AGCAGCCAAAGGGGAACCTGAGAATGAAGAGAAGGAAGAAAATAAGTCTTCTGAGGAAACCAAAAAGGA
 TGAGAAAGATCAGTCTAAAGAAAAGGAGAAGAAAGTGAAGAAAACAATTCCTTCTGGGCTACCTTTCT
 GCCAGCCAGCTAGCCAGGGCCAGAAAACAACACCGATGGCTTCTCCCCAGTCCCAAGATGGATGCAA
 TCTTAAGTGAAGCCATTAAGGCATGCTCCAGAAGAGTGGTGCATCAGTGGTTGCTATTCGAAAATACAT
 CATCCATAAGTATCCTTCTGAGCTGGAGAGAAGGGTTATCTCCTTAAACAAGCACTGAAAAGAGAA
 TTAAGTAGAGGAGTCATCAACAGGTTAAAGGAAAAGGTCTTCTGGAAGTTTTGTTGTGGTTCCAGAAAT
 CAAGAAAAACACCTCAGAAATCCAGAAACAGAAAGAATAGGAGCTCTGCAGTGGATCCAGAACCAAGT
 AAAATTGGAGGATGTCCTCCCACTGGCCTTTACTCGCCTTTGTGAACCTAAAGAAGCTTCTACAGTCTC
 ATCAGGAAATATGTGTCTCAGTATTATCCTAAGCTTAGAGTGGACATCAGGCCTCAGCTGTTGAAGAAGC
 CTCTGCAGAGAGCAGTAGAGAGGGGCCAGTTAGAACAGATAACTGGCAAAGGTGCTTCGGGGACATTCCA
 GCTGAAGAAATCAGGGGAGAAACCCCTGCTTGGTGAAGCCTGATGGAATATGCAATCTTGTCTGCCATT
 GCTGCCATGAATGAGCCGAAGACCTGCTCTACCACTGCTCTGAAGAAGTATGCTCTAGAGAATCACCCAG
 GAACCAATTCTAACTATCAAATGCATTTGCTGAAAAAACCCCTGCAGAAATGCGAAAAAGATGGTGGAT
 GGAACAGATCTCTGGGAAAGGGTTCAGTGGCACCTTCCAGCTCTGTTTTCCCTATTATCCAGCCAGGA
 GTTCTGTTTTCCGAAGAAAGAGCCAGATGATTCTAGAGATGAGGATGAAGATGAAGATGAGTCATCAGAAG
 AAGACTCTGAGGATGAAGAGCCGCCACCTAAGAGAAGGTTGCAGAAGAAAACCCAGCCAAGTCCCAGG
 GAAGGCCGCATCTGTGAAGCAGAGAGGGTCCAACCTGCACCTAAAGTCTCAGCTGCCAGCGGGGAA
 GCTAGGCCCTTGCTAAGAAAGCACCTCCTAAGGCCAAAACGCCTGCCAAGAAGACCAGACCCTCATCCA
 CAGTCATCAAGAAACCTAGTGGTGGCTCCTCAAGAAGCCTGCAACCAGTCAAGAAAGGAAGTAAAT
 GCCGGCAAGGGCAAATCCACCATGAAGAAGTCTTTCAGAGTGAAAAAG

ACGCGTACGCGGCCGCTCGAGCAGAAACTCATCTCAGAAGAGGATCTGGCAGCAAATGATATCCTGGATT
 ACAAGGATGACGACGATAAGGTTTAA

Protein Sequence:

>RC217390 representing NM_016287
 Red=Cloning site Green=Tags(s)

MATDTSQGELVHPKALPLIVGAQLIHADKLGKVEDSTMPIRRTVNSTRETPPKSKLAEGEEKPEPDIS
 SEESVSTVEEQENETPPATSSEAEQPKGEPENEEKEENKSSEETKKDEKQSKKEKVKVKTIPSWATLS
 ASQLARAQKQTPMASSPRPKMDAILTEAIKACFQKSGASVVAIRKYIIHKYPSLELERRGYLLKQALKRE
 LNRGVIKQVKGKASGSFVVVQKSRKTPQKSRNRKNRSSAVDPEPQVKLEDVLPFLAFTRLCEPKEASYSL
 IRKYVSQYYPKLRVDIRPQLLNALQRAVERGQLEQITGKGASGTFQLKKSGEKPLLGGSLMEYAILSAI
 AAMNEPKTCSTTALKKYVLENHPGTNSNYQMHLKKTLLQKCEKNGWMEQISGKFSGTFQLCFYPYSPG
 VLFPPKKEPDDSRDEDEDESEDESEDEEPPPKRRLQKKTAKSPGKAASVKQKRGSKPAPKVSAAQRGK
 ARPLPKAPPKAKTPAKKTRPSSTVIKKPSGGSSKKPAT SARKEVKLPGKSTMKKSFRVKK

TRTRPLEQKLI SEEDLAANDILDYKDDDDKV

Chromatograms:

https://cdn.origene.com/chromatograms/mk8015_c06.zip

Restriction Sites:

Sgfl-Mlul

Cloning Scheme:


ACCN: NM_016287

ORF Size: 1659 bp

OTI Disclaimer: The molecular sequence of this clone aligns with the gene accession number as a point of reference only. However, individual transcript sequences of the same gene can differ through naturally occurring variations (e.g. polymorphisms), each with its own valid existence. This clone is substantially in agreement with the reference, but a complete review of all prevailing variants is recommended prior to use. [More info](#)

OTI Annotation: This clone was engineered to express the complete ORF with an expression tag. Expression varies depending on the nature of the gene.

Components: The ORF clone is ion-exchange column purified and shipped in a 2D barcoded Matrix tube containing 10ug of transfection-ready, dried plasmid DNA (reconstitute with 100 ul of water).

- Reconstitution Method:**
1. Centrifuge at 5,000xg for 5min.
 2. Carefully open the tube and add 100ul of sterile water to dissolve the DNA.
 3. Close the tube and incubate for 10 minutes at room temperature.
 4. Briefly vortex the tube and then do a quick spin (less than 5000xg) to concentrate the liquid at the bottom.
 5. Store the suspended plasmid at -20°C. The DNA is stable for at least one year from date of shipping when stored at -20°C.

RefSeq: [NM_016287.5](#)

RefSeq Size: 1855 bp

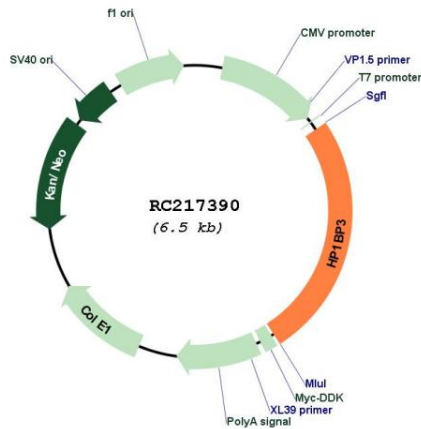
RefSeq ORF: 1662 bp

Locus ID: 50809

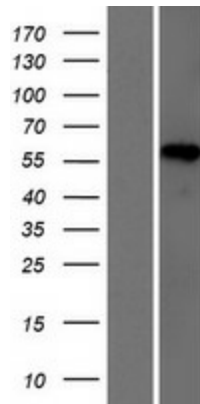
UniProt ID: [Q5SSJ5](#)

Cytogenetics: 1p36.12
Domains: linker_histone
MW: 61 kDa
Gene Summary: Component of heterochromatin that maintains heterochromatin integrity during G1/S progression and regulates the duration of G1 phase to critically influence cell proliferative capacity (PubMed:24830416). Mediates chromatin condensation during hypoxia, leading to increased tumor cell viability, radio-resistance, chemo-resistance and self-renewal(PubMed:25100860).[UniProtKB/Swiss-Prot Function]

Product images:



Circular map for RC217390



Western blot validation of overexpression lysate (Cat# [LY414065]) using anti-DDK antibody (Cat# [TA50011-100]). Left: Cell lysates from untransfected HEK293T cells; Right: Cell lysates from HEK293T cells transfected with RC217390 using transfection reagent MegaTran 2.0 (Cat# [TT210002]).