

Product datasheet for **RC217384L4V**

EGFR (NM_005228) Human Tagged ORF Clone Lentiviral Particle

Product data:

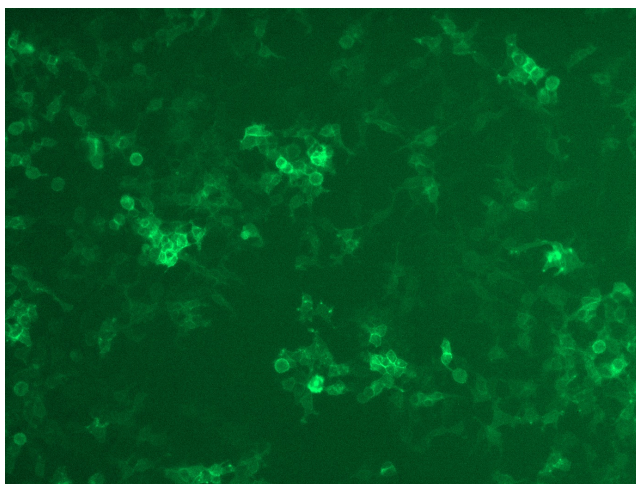
Product Type:	Lentiviral Particles
Product Name:	EGFR (NM_005228) Human Tagged ORF Clone Lentiviral Particle
Symbol:	EGFR
Synonyms:	ERBB; ERBB1; ERBP; HER1; mENA; NISBD2; PIG61
Mammalian Cell Selection:	Puromycin
Vector:	pLenti-C-mGFP-P2A-Puro (PS100093)
Tag:	mGFP
ACCN:	NM_005228
ORF Size:	3630 bp
ORF Nucleotide Sequence:	The ORF insert of this clone is exactly the same as(RC217384).
OTI Disclaimer:	The molecular sequence of this clone aligns with the gene accession number as a point of reference only. However, individual transcript sequences of the same gene can differ through naturally occurring variations (e.g. polymorphisms), each with its own valid existence. This clone is substantially in agreement with the reference, but a complete review of all prevailing variants is recommended prior to use. More info
OTI Annotation:	This clone was engineered to express the complete ORF with an expression tag. Expression varies depending on the nature of the gene.
RefSeq:	NM_005228.3 , NP_005219.2
RefSeq Size:	5616 bp
RefSeq ORF:	3633 bp
Locus ID:	1956
UniProt ID:	P00533
Cytogenetics:	7p11.2
Domains:	Recep_L_domain, pkinase, TyrKc, S_TKc, Furin-like, FU



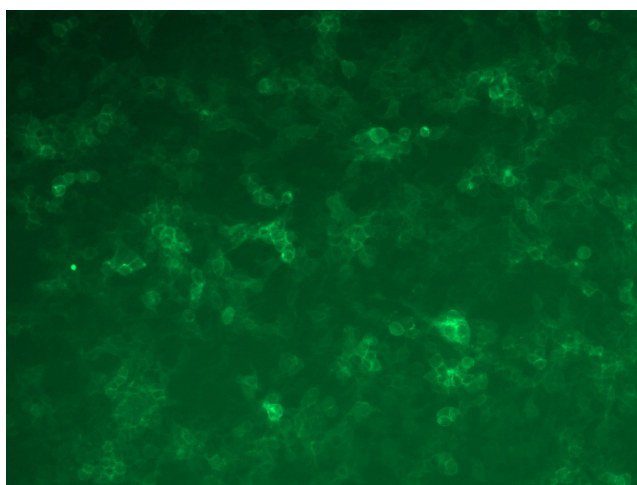
[View online »](#)

Protein Families:	Adult stem cells, Cancer stem cells, Druggable Genome, ES Cell Differentiation/IPS, Protein Kinase, Secreted Protein, Stem cell relevant signaling - JAK/STAT signaling pathway, Transmembrane
Protein Pathways:	Adherens junction, Bladder cancer, Calcium signaling pathway, Colorectal cancer, Cytokine-cytokine receptor interaction, Dorso-ventral axis formation, Endocytosis, Endometrial cancer, Epithelial cell signaling in Helicobacter pylori infection, ErbB signaling pathway, Focal adhesion, Gap junction, Glioma, GnRH signaling pathway, MAPK signaling pathway, Melanoma, Non-small cell lung cancer, Pancreatic cancer, Pathways in cancer, Prostate cancer, Regulation of actin cytoskeleton
MW:	134.7 kDa
Gene Summary:	The protein encoded by this gene is a transmembrane glycoprotein that is a member of the protein kinase superfamily. This protein is a receptor for members of the epidermal growth factor family. EGFR is a cell surface protein that binds to epidermal growth factor, thus inducing receptor dimerization and tyrosine autophosphorylation leading to cell proliferation. Mutations in this gene are associated with lung cancer. EGFR is a component of the cytokine storm which contributes to a severe form of Coronavirus Disease 2019 (COVID-19) resulting from infection with severe acute respiratory syndrome coronavirus-2 (SARS-CoV-2). [provided by RefSeq, Jul 2020]

Product images:



[RC217384L4] was used to prepare Lentiviral particles using [TR30037] packaging kit. HEK293T cells were transduced with RC217384L4V particle to overexpress human EGFR-mGFP fusion protein.



[RC217384L4] was used to prepare Lentiviral particles using [TR30037] packaging kit. HEK293T cells were transduced with RC217384L4V particle to overexpress human EGFR-mGFP fusion protein.