

## Product datasheet for RC217384

### EGFR (NM\_005228) Human Tagged ORF Clone

#### Product data:

Product Type:	Expression Plasmids
Product Name:	EGFR (NM_005228) Human Tagged ORF Clone
Tag:	Myc-DDK
Symbol:	EGFR
Synonyms:	ERBB; ERBB1; ERRP; HER1; mENA; NISBD2; PIG61
Mammalian Cell Selection:	Neomycin
Vector:	pCMV6-Entry (PS100001)
E. coli Selection:	Kanamycin (25 ug/mL)
ORF Nucleotide Sequence:	>RC217384 representing NM_005228 Red=Cloning site Blue=ORF Green=Tags(s)

TTTTGTAATACGACTCACTATAGGGCGGCCGGAATTCGTCGACTGGATCCGGTACCGAGGAGATCTGCC  
GCC**CGATCGCC**

ATGCGACCCTCCGGGACGGCCGGGGCAGCGCTCCTGGCGCTGCTGGCTGCGCTCTGCCCGGCGAGTCGGG  
CTCTGGAGGAAAAGAAAGTTTGCCAAGGCACGAGTAACAAGCTCACGCAGTTGGGCATTTTGAAGATCA  
TTTTCTCAGCCTCCAGAGGATGTTCAATAACTGTGAGGTGGTCTTGGGAATTTGGAAATACCTATGTG  
CAGAGGAATTATGATCTTCTTCTTAAGACCATCCAGGAGGTGGCTGTTATGTCCTCATTGCCCTCA  
ACACAGTGGAGCGAATTCCTTTGAAAACCTGCAGATCATCAGAGGAAATATGTACTACGAAAATTCCTA  
TGCTTAGCAGTCTTATCTAACTATGATGCAAATAAAACCGGACTGAAGGAGCTGCCCATGAGAAATTTA  
CAGGAAATCCTGCATGGCGCCGTGCGGTTACAGCAACAACCTGCCTGTGCAACGTGGAGAGCATCCAGT  
GGCGGGACATAGTCAGCAGTGACTTTCTCAGCAACATGTCGATGGACTTCCAGAACCACCTGGGCAGCTG  
CCAAAAGTGTGATCCAAGCTGTCCCAATGGGAGCTGCTGGGGTGCAGGAGAGGAGAAGTCCAGAAAAGT  
ACCAAAATCATCTGTGCCAGCAGTGCTCCGGGCGCTGCCGTGGCAAGTCCCCAGTGACTGCTGCCACA  
ACCAGTGTGCTGCAGGCTGCACAGGCCCCGGGAGAGCGACTGCCTGGTCTGCCGCAAATCCGAGACGA  
AGCCACGTGCAAGGACACCTGCCCCCACTCATGCTCTACAACCCACCACGTACCAGATGGATGTGAAC  
CCCGAGGGCAAATACAGCTTTGGTGCCACCTGCGTGAAGAAGTGTCCCGTAATTTATGTGGTGACAGATC  
ACGGCTCGTCCGTCAGCCTGTGGGGCCGACAGCTATGAGATGGAGGAAGACGGCGTCCGCAAGTGTA  
GAAGTGCAGAGGGCCTTGCCGCAAAGTGTGTAACGGAATAGGTATTGGTGAATTTAAAGACTCACTCTCC  
ATAAATGCTACGAATATTAACAACCTTCAAAAAGTGCACCTCCATCAGTGGCGATCTCCACATCTGCCGG  
TGGCATTAGGGGTGACTCCTTACACATACTCCTCCTCTGGATCCACAGGAACTGGATATTCTGAAAAC  
CGTAAAGGAAATCACAGGGTTTTGCTGATTACAGGCTTGGCTGAAAACAGGACGGACCTCCATGCCTTT  
GAGAACCTAGAAATCATACGGCAGGACCAAGCAACATGGTCAGTTTTCTTTCAGTCGTCAGCCTGA  
ACATAACATCCTTGGGATTACGCTCCCTCAAGGAGATAAGTGATGGAGATGTGATAATTTACAGAAACAA  
AAATTTGTCTATGCAAATAACAATAAAGTGAAAAAACTGTTGGACCTCCGGTCAGAAAACCAAAT



[View online »](#)

ATAAGCAACAGAGGTGAAAAACAGCTGCAAGGCCACAGGCCAGGTCTGCCATGCCTTGTGCTCCCCGAGG  
GCTGCTGGGGCCCGAGCCCAGGGACTGCGTCTCTTGCCGGAATGTCAGCCGAGGCAGGGAATGCGTGGA  
CAAGTGCAACCTTCTGGAGGGTGAGCCAAGGGAGTTTGTGGAGAACTCTGAGTGCATACAGTGCCACCCA  
GAGTGCCTGCCTCAGGCCATGAACATCACCTGCACAGGACGGGGACCAGACAACCTGTATCCAGTGTGCC  
ACTACATTGACGGCCCCACTGCGTCAAGACCTGCCCGCAGGAGTCAATGGGAGAAAACAACACCCTGGT  
CTGGAAGTACGCAGACGCCGCCATGTGTGCCACCTGTGCCATCCAACTGCACCTACGGATGGTGGGGCCC  
CCAGGCTTGAAGGCTGTCCAACGAATGGGCCTAAGATCCCGTCCATCGCCACTGGGATGGTGGGGCCC  
TCCTTTGCTGCTGGTGGTGGCCCTGGGATCGGCCTTTCATGCGAAGGCGCCACATCGTTCGGAAGCG  
CACGCTGCGGAGGCTGCTGCAGGAGAGGGAGCTTGTGGAGCCTTTACACCCAGTGGAGAAGCTCCCAAC  
CAAGCTCTCTTGAGGATCTTGAAGGAACTGAATTCAAAAAGATCAAAGTCTGGGCTCCGGTGCCTTCG  
GCACGGTGTATAAGGGACTCTGGATCCCAGAAGGTGAGAAAAGTAAAAATCCCGTCGCTATCAAGGAATT  
AAGAGAAGCAACATCTCCGAAAGCCAACAAGGAAATCCTCGATGAAGCCTACGTGATGGCCAGCGTGGAC  
AACCCCCACGTGTGCCGCTGCTGGGCATCTGCCTCACCTCCACCGTGCAGCTCATCACGCAGCTCATGC  
CCTTCGGCTGCCTCCTGGACTATGTCCGGGAACACAAAGACAATATTGGCTCCAGTACCTGCTCAACTG  
GTGTGTGCAGATCGAAAAGGGCATGAACTACTTGGAGGACCGTCGCTTGGTGCACCGCGACTGGCAGCC  
AGGAACGTACTGGTGA AAAACACCAGCATGTCAAGATCACAGATTTTGGGCTGGCCAAACTGCTGGGTG  
CGGAAGAGAAAAGAATACCATGCAGAAGGAGGCAAAGTGCCTATCAAGTGATGGCATTGGAAATCAATTTT  
ACACAGAACTATACCCACCAGAGTGTGTCTGGAGCTACGGGGTGACCGTTTGGGAGTTGATGACCTTT  
GGATCCAAGCCATATGACGGAATCCCTGCCAGCGAGATCTCCTCCATCCTGGAGAAAGGAGAACGCTCC  
CTCAGCCACCCATATGTACCATCGATGTCTACATGATCATGGTCAAGTGTGGATGATAGACGCAGATAG  
TCGCCCCAAAGTTCCGTGAGTTGATCATCGAATTCTCCAAAATGGCCCGAGACCCCGAGCGCTACCTTGTC  
ATTCAGGGGGATGAAAGAATGCATTTGCCAAGTCTACAGACTCCAACCTCTACCGTGCCTGATGGATG  
AAGAAGACATGGACGACGTGGTGGATGCCGACGAGTACCTCATCCACAGCAGGGCTTCTTCAGCAGCCC  
CTCCACGTACAGGACTCCCTCCTGAGCTCTCTGAGTGAACCAAGCAACAATTCCACCGTGGCTTGCAAT  
GATAGAAATGGGCTGCAAAGCTGTCCCATCAAGGAAGACAGCTTCTTGCAGCGATACAGCTCAGACCCCA  
CAGGCGCCTTGACTGAGGACAGCATAGACGACACCTTCTCCAGTGCCTGAATACATAAACAGTCCGT  
TCCAAAAGGCCCGCTGGCTCTGTGCAGAAATCCTGTCTATCACAATCAGCCTCTGAACCCCGCGCCAGC  
AGAGACCCACACTACCAGGACCCCCACAGCACTGCAGTGGCAACCCCGAGTATCTCAACACTGTCCAGC  
CCACCTGTGTCAACAGCACATTCGACAGCCCTGCCACTGGGCCAGAAAGGCAGCCACCAAATAGCCT  
GGACAACCCTGACTACCAGCAGGACTTCTTTCCAAAGGAAGCCAAGCCAAATGGCATCTTTAAGGGCTCC  
ACAGCTGAAAATGCAGAATACCTAAGGGTTCGGCCACAAAGCAGTGAATTTATTGGAGCA

ACGCGTACGCGGCCGCTCGAGCAGAACTCATCTCAGAAGAGGATCTGGCAGCAAATGATATCCTGGATT  
ACAAGGATGACGACGATAAGGTTTAA

**Protein Sequence:** >RC217384 representing NM\_005228  
 Red=Cloning site Green=Tags(s)

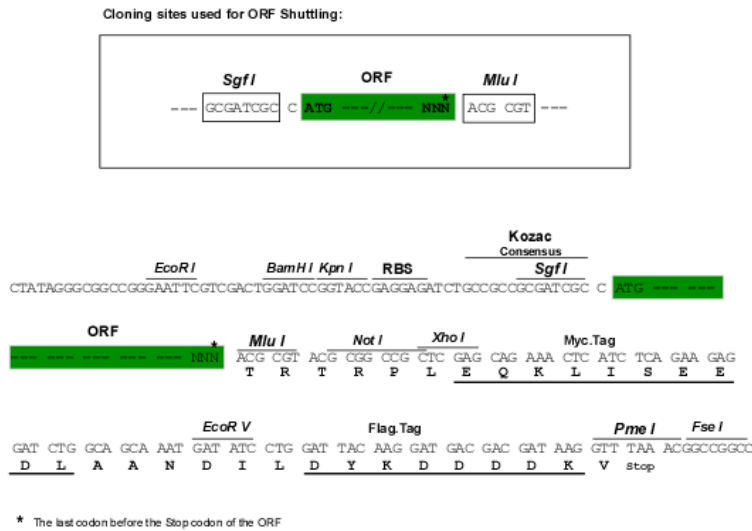
MRPSGTAGAALLALLAALCPASRALEEKKVCQGTSNKL TQLGTFEDHFLSLQRMFNCEVVLGNLEITYV  
 QRNYDL SFLKTIQEVAGYVLI ALNTVERIPL ENLQIIRGNMYYENSYALAVLSNYDANKTGLKELPMRNL  
 QEILHGAVRFSNNPALCNVESIQWRDIVSSDFL SNMSMDFQNH LGSCQKCDPSCPNWSCWGAGEENCQKL  
 TKIICAQQCSGRCRGKSPSDCCHNQCAAGCTGPRESDCLVCRKFRDEATCKDTCPPMLLYNPPTYQMDVN  
 PEGKYSFGATCVKKCPRNYVVTDHGSCVRACGADSYEMEEDGVRKCKCEGPCRKVCNGIGIGEFKDSLS  
 INATNIKHFKNCTSI SGLDHLIPVAFRGDSFHTHTPPLDPQELDILKTVKEITGFLLIQAWPENRTDLHAF  
 ENLEIIRGRKQHGQFSLAVVSLNITSLGLRSLKEISDGDV IISGNKNLCYANTINWKKLFGTSGQKTKI  
 ISNRGENSCKATGQVCHALCSPEGCWGEPRDCVSCRNVSRGECVDKCNLLEGEPRFVENSECIQCHP  
 ECLPQAMNITCTGRGPDNCIQCAHYIDGPHCVKTCPAGVMGENNTLVWVYADAGHVCHLCHPNCTYGCTG  
 PGLEGCP TNGPKIPSIATGMV GALLLLLVVALGIGLFMRRRHIVRKRTRRLQLERELVEPLTPSGEAPN  
 QALLRILKETEFKKIKVLGSGAFGTVYKGLWIPEGEKVKIPVAIKELREATSPKANKEILDEAYMASVD  
 NPHVCRLLGICL TSTVQLITQLMPFGCLLDYVREHKDNIGSQYLLNWCVQIAKGMNYLEDRLRVHRDLAA  
 RNVLVKTPQHVKITDFGLAKLLGAEKEYHAEGGKVIKWMALESILHRIYTHQSDVWSYGVTVWELMTF  
 GSKPYDGPASEISSILEKGERLPQPICTIDVYMIMVKCWMIDADSRPKFREL IIEFSKMARDPQRYLV  
 IQGDERMHLPSPTDSNFYRALMDEEDMDDVVDAYLIPQQGFFSSPSTSRTPLLSSLSATSNNSTVACI  
 DRNGLQSCPIKEDSFLQRYSSDPTGAL TEDSIDDTFLVPVEYINQSVPKRPAGSVQNPVYHNQPLNAPS  
 RDPHYQDPHSTAVGNPEYLVNTVQPTCVNSTFDSPAHWAKGSHQISLDNPDYQQDFFPEAKPNGIFKGS  
 TAENAEYLRVAPQSSEFIGA

TRTRPLEQKLISEEDLAANDILDYKDDDDKV

**Chromatograms:** [https://cdn.origene.com/chromatograms/ja2282\\_h03.zip](https://cdn.origene.com/chromatograms/ja2282_h03.zip)

**Restriction Sites:** SgfI-MluI

**Cloning Scheme:**



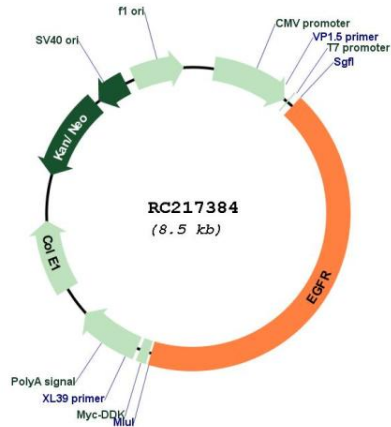
**ACCN:** NM\_005228

**ORF Size:** 3630 bp

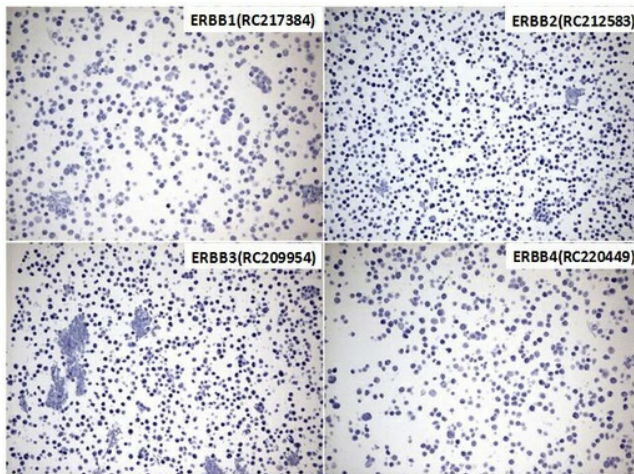
<b>OTI Disclaimer:</b>	The molecular sequence of this clone aligns with the gene accession number as a point of reference only. However, individual transcript sequences of the same gene can differ through naturally occurring variations (e.g. polymorphisms), each with its own valid existence. This clone is substantially in agreement with the reference, but a complete review of all prevailing variants is recommended prior to use. <a href="#">More info</a>
<b>OTI Annotation:</b>	This clone was engineered to express the complete ORF with an expression tag. Expression varies depending on the nature of the gene.
<b>Components:</b>	The ORF clone is ion-exchange column purified and shipped in a 2D barcoded Matrix tube containing 10ug of transfection-ready, dried plasmid DNA (reconstitute with 100 ul of water).
<b>Reconstitution Method:</b>	<ol style="list-style-type: none"><li>1. Centrifuge at 5,000xg for 5min.</li><li>2. Carefully open the tube and add 100ul of sterile water to dissolve the DNA.</li><li>3. Close the tube and incubate for 10 minutes at room temperature.</li><li>4. Briefly vortex the tube and then do a quick spin (less than 5000xg) to concentrate the liquid at the bottom.</li><li>5. Store the suspended plasmid at -20°C. The DNA is stable for at least one year from date of shipping when stored at -20°C.</li></ol>
<b>Note:</b>	Plasmids are not sterile. For experiments where strict sterility is required, filtration with 0.22um filter is required.
<b>RefSeq:</b>	<a href="#">NM_005228.3</a> , <a href="#">NP_005219.2</a>
<b>RefSeq Size:</b>	5616 bp
<b>RefSeq ORF:</b>	3633 bp
<b>Locus ID:</b>	1956
<b>UniProt ID:</b>	<a href="#">P00533</a>
<b>Cytogenetics:</b>	7p11.2
<b>Domains:</b>	Recep_L_domain, pkinase, TyrKc, S_TKc, Furin-like, FU
<b>Protein Families:</b>	Adult stem cells, Cancer stem cells, Druggable Genome, ES Cell Differentiation/IPS, Protein Kinase, Secreted Protein, Stem cell relevant signaling - JAK/STAT signaling pathway, Transmembrane
<b>Protein Pathways:</b>	Adherens junction, Bladder cancer, Calcium signaling pathway, Colorectal cancer, Cytokine-cytokine receptor interaction, Dorso-ventral axis formation, Endocytosis, Endometrial cancer, Epithelial cell signaling in Helicobacter pylori infection, ErbB signaling pathway, Focal adhesion, Gap junction, Glioma, GnRH signaling pathway, MAPK signaling pathway, Melanoma, Non-small cell lung cancer, Pancreatic cancer, Pathways in cancer, Prostate cancer, Regulation of actin cytoskeleton
<b>MW:</b>	134.7 kDa

**Gene Summary:**

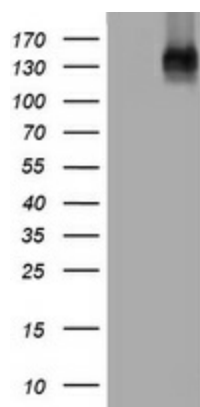
The protein encoded by this gene is a transmembrane glycoprotein that is a member of the protein kinase superfamily. This protein is a receptor for members of the epidermal growth factor family. EGFR is a cell surface protein that binds to epidermal growth factor, thus inducing receptor dimerization and tyrosine autophosphorylation leading to cell proliferation. Mutations in this gene are associated with lung cancer. EGFR is a component of the cytokine storm which contributes to a severe form of Coronavirus Disease 2019 (COVID-19) resulting from infection with severe acute respiratory syndrome coronavirus-2 (SARS-CoV-2). [provided by RefSeq, Jul 2020]

**Product images:**


Circular map for RC217384



Immunohistochemical staining of paraffin-embedded ERBB superfamily members cell pellets (Sample 1 is ERBB1 (RC217384), Sample 2 is ERBB2 ([RC212583]), Sample 3 is ERBB3 ([RC209954]), Sample 4 is ERBB4 ([RC220449])) using anti-EGFR L858R Mouse monoclonal antibody (Heat-induced epitope retrieval by 1mM EDTA in 10mM Tris buffer (pH8.0) at 120°C for 2.5 min, [UM800125]) (1:300)



HEK293T cells were transfected with the pCMV6-ENTRY control (Cat# [PS100001], Left lane) or pCMV6-ENTRY EGFR (Cat# RC217384, Right lane) cDNA for 48 hrs and lysed. Equivalent amounts of cell lysates (5 ug per lane) were separated by SDS-PAGE and immunoblotted with anti-EGFR antibody (Cat# [TA801955]). Positive lysates [LY417434] (100ug) and [LC417434] (20ug) can be purchased separately from OriGene.