

## Product datasheet for RC217379

### STYXL2 (NM\_001080426) Human Tagged ORF Clone

#### Product data:

Product Type:	Expression Plasmids
Product Name:	STYXL2 (NM_001080426) Human Tagged ORF Clone
Tag:	Myc-DDK
Symbol:	STYXL2
Synonyms:	DUSP27
Mammalian Cell Selection:	Neomycin
Vector:	pCMV6-Entry (PS100001)
E. coli Selection:	Kanamycin (25 ug/mL)
ORF Nucleotide Sequence:	>RC217379 representing NM_001080426 Red=Cloning site Blue=ORF Green=Tags(s)

TTTTGTAATACGACTCACTATAGGGCGGCCGGAATTCGTCGACTGGATCCGGTACCGAGGAGATCTGCC  
GCC**CGATCGCC**

ATGGCGACCAGAAAGGACACAGAGGAGGAGCAGGTAGTCCCAAGCGAGGAGGACGAAGCCAACGTGAGGG  
CGGTGCAGGCCCACTACCTCCGAAGCCCCTCCCCTAGCCAGTATTCGATGGTCTCAGATGCAGAAACAGA  
AAGCATTTTCATGGAACCCATTCACCTCTCCTCAGCCATTGCAGCCAAACAGATCATCAATGAAGAATC  
AAGCCACCGGGGGTCCAGAGCAGACGCAGAGTGTCCAGGCATGCTGGAGTCTGCTGAACAGCTGCTGGTGG  
AGGACCTGTACAACCGCGTCAGGGAGAAGATGGATGACACCAGCCTCTATAATACGCCCTGTGTCCTGGA  
CCTACAGCGGGCCCTGGTTCAGGATCGCCAAGAGGCGCCCTGGAATGAGGTGGATGAGGTCTGGCCCAAT  
GTCTTCATAGCTGAGAAGAGTGTGGCTGTGAACAAGGGGAGGCTGAAGAGGCTGGGAATCACCCACATTC  
TGAATGCTGCGCATGGCACCGGGCGTTTACACTGGCCCCGAATTCTACACTGGCCTGGAGATCCAGTACCT  
GGGTGTAGAGGTGGATGACTTTCCTGAGGTGGACATTTCCAGCATTTCCGGAAGGCGTCTGAGTTCCTG  
GATGAGGCGTGTGACTTACAGAGGAAAAGTCTGGTCAAGCAGCGAAATGGGCATCAGCCGGTCAAGCAG  
TGCTGGTGGTCCCTACCTGATGATCTTCCACAACATGGCCATCCTGGAGGCTTTGATGACCGTGCCTAA  
GAAGCGGGCCATCTACCCAATGAGGGCTTCTGAAGCAGCTGCGGGAGCTCAATGAGAAGTTGATGGAG  
GAGAGAGAAGAGGACTATGGCCGGGAGGGGGATCAGCTGAGGCTGAGGAGGGCAGGGCCTGGGAGCA  
TGCTCGGGGCCAGAGTGCACGCCCTGACGGTGGAAAGAGGAGGACGACAGCGCCAGCCACCTGAGTGGCTC  
CTCCCTGGGGAAGGCCACCCAGGCTCCAAGCCCCTCACCTCATAGACGAGGAGGAGGAGAGAAACTG  
TACGAGCAGTGAAGAAGGGGCAGGGCCTCCTCTCAGACAAGGTCCCCAGGATGGAGGTGGCTGGCGCT  
CAGCCTCCTCTGGCCAGGTTGGGAGGAGCTCGAGGACGAGGACGTGGAGAGGATCATCCAGGAGTGGCA  
GAGCCGAAACGAGAGGTACCAAGCAGAAGGTTACCGAGGTGGGGAAGGGAGGAGGAGAAGGAGGAGGAG  
AGCGACGCTGGCTCCTCGGTGGGAGGGCGGCGCCACCTGAGCGAGAGCAGCGCTGGGAGAGCGTGA  
GCAGCCACGACATCTGGTCTGAAGCAGCAGCTGGAGCTGAACCGCCCGACCACGGCAGGAGGGCCCG  
CGCAGACTCGATGCTCCTCGGAGACACCTGGGACGCATGGAACGAGAGGCTGCTGGAGATTGAGAAGGAG



[View online »](#)

GCTTCCCGGAGGTACCACGCCAAGAGCAAGAGAGAGGAGGCGGCAGACAGGAGCTCAGAAGCAGGGAGCA  
GGGTGCGGGAGGATGATGAGGACAGCGTGGGCTCTGAGGCCAGTTCCTTCTACAACCTTCTGCAGCAGGAA  
CAAGGACAAGCTCACTGCCCTGGAAGATGGAAGATCAAGAGAATCCAATTTGGATTTACAAGAAAGAC  
TTGGGAGCGGGAGACAGCAGCGGTGAGCCCGGTGCAGAGGAGGCAGTAGGGGAGAAGAACCCTCCGACG  
TCAGCCTGACAGCCTACCAGGCTGGAAGCTGAAACACCAGAAGAAGGTGGGCAGTGAGAACAAGGAGGA  
GGTGGTGGAGCTCAGCAAGGGGGAGGACTCGGCCTTGGCTAAGAAGAGACAACGGAGGCTGGAGCTGCTG  
GAGAGAAGCCCGCAGACGCTGGAGGAGAGCCAGTCTATGGCAAGCTGGGAGGCGGACAGCTCCACGGCCA  
GCGGGAGCATTCCCTGTCTGCGTTCTGGTCTGCAGACCCTCAGTCAGCGCTGATGGGGACACGACGTC  
AGTACTGAGCACCCAGAGCCACCCTCCACCTGTCTCAGGCTGCAAGCAACATAGCGGGGTGTTCAACC  
TCCAACCCACCACACCCTGCCTAACCTGCCAGTGGGGCTGGAGACACCATTTCATTGCCAGTATCC  
AGAAGTGGATTGCCAATGTAGTCAGTGAGACCCTTGTCTCAGAAGCAAAATGAAATGCTGCTGTTGCCCG  
CTCACCGTCTGTTGCAAGCATGAAGGCAGTACCAGCGGCTAGCTGCCTGGGGATGACCAAGTCTCCATG  
CTTAGTGGACACAGCAGCTCCTCCTGGGTGGCTGCCTGTTGCCTCAGAGCCAGGCAAGACCAGCTCTG  
ACATGCAGTCTGTGCTGCTGCAACACCACACTGAGCTCACCCGCGAAAGTTGCAGAAGCAAAGTGAG  
GGGACCAGCAAGCCATCTTCAGCCTCTTGGCTGACAAATGTGGACCTAAAGGAAGTTGGCCGGAAGGAG  
AAGGAGATGCAGATGGAGCTTAGGGAGAAGATGTCTGAGTACAAAATGGAAAAGCTGGCCTCAGACAACA  
AACGCAGTCCCTCTTCAAGAAGAAGAAGTCAAGGAAGATGAGGATGATGGTGTGGGTGATGGGGATGA  
GGCACTGACAGTGCCATAGGGAGCTTCCGATATTCTTCCCGCAGTAATCCAGAAACCTGAAACAGAC  
ACATGCTCCTCCCTGGCTGTCTGTGATCACTATGCAAGTGGCAGCAGAGTTGGCAAAGAGATGGATAGCA  
GTATTAATAAGTGGCTCAGTGGCCTCAGGACGGAGGAAAAACCTCCTTCCAAAGTACTGGTCTGGAAG  
TTCCAGAGGGAAGTACACCAGATCGTCCCTGCTCAGGGAGACAGAGTCTAAATCCTCCAGTTACAAGTTT  
TCCAAATCCCAGTCAGAGGAACAGGACACCTCCTCCTACCACGAGGCAAATGGCAACTCTGTAAGAAGCA  
CTTCACGGTTCATCTTCCCTCACCAGGGAGGGCAGAGAGATGCACAAGTTCTCCAGGTCACGTACAA  
CGAGACCTCAAGTTCCTCGAGAGGAGAGCCAGAGCCCTACTTCTTCCGCGGACCCAGAGTCCTCAGAA  
AGGGAAGAGTCCCAGAACACAGCGCCAAATGGGCCAGTCCAGGACTGGGAAGATGTGGAAGAGT  
CATCCAAGTCAGACTTCTCTGAATTTGGAGCCAAGAGGAAGTTCACCCAGAGCTTATGAGGTCTGAAGA  
AGAGGGAGAGAAAGAGAGGACAGAAAACAGAGAAGAAGGGAGGTTTGCATCTGGACGGCGGTCCAGTAT  
CGGAGAAGCACTGACAGGGAGGAAGAGGAAGAAATGGACGATGAAGCCATCATTGCTGCTGGAGACGCC  
GGCAAGAAGAACCAGGACCAAGCTGCAGAAAAGGAGGGAGGAC

ACGCGTACGCGGCCGCTCGAGCAGAACTCATCTCAGAAGAGGATCTGGCAGCAAATGATATCCTGGATT  
ACAAGGATGACGACGATAAGGTTTAA

**Protein Sequence:** >RC217379 representing NM\_001080426  
Red=Cloning site Green=Tags(s)

MATRKDTEEEQVVPSEDEANVRAVQAHYLRSPSPSQYSMVSDAETESIFMEPIHLSAIAAKQIINEEL  
 KPPGVRADAECPGMLESAEQLLVEDLYNRVREKMDDSLNTPCVLDLQRALVQDRQEAAPWNEVDEVWPN  
 VFIAEKSVAVNKGRLKRLGITHILNAAHGTGVYTGPEFYTGLEIQYLGVEVDDFPEVDISQHFRCASEFL  
 DEALLTYRGKVLVSSEMGISRSVAVLVAYLMIFHNMAILEALMTVRKKRAIYPNEGFLKQLRELNEKLEME  
 EREEDYGREGGSAAEAEEGEGTGSMLGARVHALTVEEEDDSASHLSGSSLGKATQASKPLTLIDEEEEKL  
 YEQWKKGQGLLSDKVPQDGGGWRSSASSQGGELEDEDVERIIQEWQSRNERYQAEGYRRWGREEEKEE  
 SDAGSSVGRRRRTLSESSAWESVSSHDIWVLKQQLNELNRPDHGRRRRADSMSESTWDANNERLLEIEKE  
 ASRRYHAKSKREEAADRSSEAGSRVREDEDSVGSEASSFYNFCSRNDKLTALERWKIKRIQFGFHKKD  
 LGAGDSSGEPGAEEAVGEKNPSDVSLTAYQAWLKHQKKVGSENKEEVVELSKGEDSALAKKRQRRELL  
 ERSRQTLSEESQSMASWEADSSTASGSIPLSAFWSADPSVSADGDTT SVLSTQSHRSHLSQAASNIAGCST  
 SNPTTLPNLPVGP GDTISIASIQNWIANVVSETLAQKQNEMLLSRSPSVAMKAVPAASCLGDDQVSM  
 LSGHSSSSLGGCLLPQSQARPSSDMQSVLSCNTTLSSPAESCRSKVRGTSKPIFSLFADNVDLKELGRKE  
 KEMQMELREKMEYKMEKLASDNKRSSLFKKKVKVEDEDDGVDGDEDTSAIGSFYSSRSNSQKPETD  
 TCSSLAVCDHYASGSRVGKEMDSSINKWLSGLRTEEKPPFQSDWSSRGGYTRSSLLRETESKSSSYKF  
 SKSQSEEQDTSSYHEANGNSVRSTSRFSSSSTREGREMHKF SRSTYNETSSSREESPEPYFFRRTPESE  
 REESPEPQRPNWARSRDWEDVEESSKSDSFEFGAKRKFTQSFMRSEEEGEKERTENREEGRFASGRRSQY  
 RRSTDREEEEEEMDDEAIIAAWRRRQEETRTKLQKRRED

TRTRPLEQKLISEEDLAANDILDYKDDDDKV

**Chromatograms:** [https://cdn.origene.com/chromatograms/mk8015\\_d11.zip](https://cdn.origene.com/chromatograms/mk8015_d11.zip)

**Restriction Sites:** SgfI-MluI

**Cloning Scheme:**



**ACCN:** NM\_001080426

**ORF Size:** 3474 bp

**OTI Disclaimer:** Due to the inherent nature of this plasmid, standard methods to replicate additional amounts of DNA in E. coli are highly likely to result in mutations and/or rearrangements. Therefore, OriGene does not guarantee the capability to replicate this plasmid DNA. Additional amounts of DNA can be purchased from OriGene with batch-specific, full-sequence verification at a reduced cost. Please contact our customer care team at [custsupport@origene.com](mailto:custsupport@origene.com) or by calling 301.340.3188 option 3 for pricing and delivery.

The molecular sequence of this clone aligns with the gene accession number as a point of reference only. However, individual transcript sequences of the same gene can differ through naturally occurring variations (e.g. polymorphisms), each with its own valid existence. This clone is substantially in agreement with the reference, but a complete review of all prevailing variants is recommended prior to use. [More info](#)

**OTI Annotation:** This clone was engineered to express the complete ORF with an expression tag. Expression varies depending on the nature of the gene.

**Components:** The ORF clone is ion-exchange column purified and shipped in a 2D barcoded Matrix tube containing 10ug of transfection-ready, dried plasmid DNA (reconstitute with 100 ul of water).

**Reconstitution Method:**

1. Centrifuge at 5,000xg for 5min.
2. Carefully open the tube and add 100ul of sterile water to dissolve the DNA.
3. Close the tube and incubate for 10 minutes at room temperature.
4. Briefly vortex the tube and then do a quick spin (less than 5000xg) to concentrate the liquid at the bottom.
5. Store the suspended plasmid at -20°C. The DNA is stable for at least one year from date of shipping when stored at -20°C.

**RefSeq:** [NM\\_001080426.3](#)

**RefSeq Size:** 4034 bp

**RefSeq ORF:** 3477 bp

**Locus ID:** 92235

**UniProt ID:** [Q5VZP5](#)

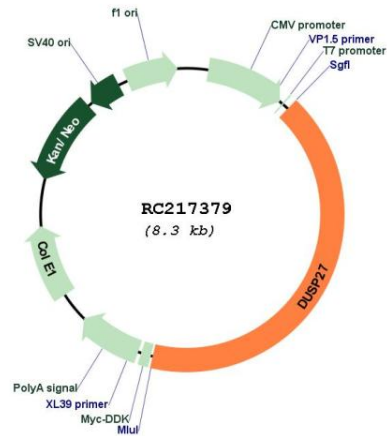
**Cytogenetics:** 1q24.1

**Protein Families:** Druggable Genome

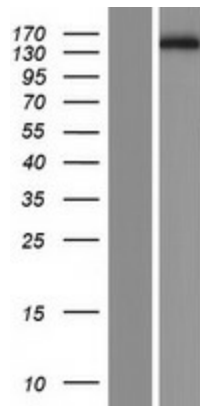
**MW:** 130 kDa

**Gene Summary:** May be required for myofiber maturation.[UniProtKB/Swiss-Prot Function]

Product images:



Circular map for RC217379



Western blot validation of overexpression lysate (Cat# [LY421643]) using anti-DDK antibody (Cat# [TA50011-100]). Left: Cell lysates from untransfected HEK293T cells; Right: Cell lysates from HEK293T cells transfected with RC217379 using transfection reagent MegaTran 2.0 (Cat# [TT210002]).