

Product datasheet for RC217374

Host cell factor C1 regulator 1 (HCFC1R1) (NM_001002018) Human Tagged ORF Clone

Product data:

Product Type: Expression Plasmids
Product Name: Host cell factor C1 regulator 1 (HCFC1R1) (NM_001002018) Human Tagged ORF Clone
Tag: Myc-DDK
Symbol: Host cell factor C1 regulator 1
Synonyms: HPIP
Mammalian Cell Selection: Neomycin
Vector: pCMV6-Entry (PS100001)
E. coli Selection: Kanamycin (25 ug/mL)
ORF Nucleotide Sequence: >RC217374 ORF sequence
 Red=Cloning site Blue=ORF Green=Tags(s)

TTTTGTAATACGACTCACTATAGGGCGCCGGGAATTCGTCGACTGGATCCGGTACCGAGGAGATCTGCC
GCCCGGATCGCC

ATGATCCTGCAGCAGCCCTTGCAGCGAGGCCCCAGGGAGGGGCCAGCGCCTCCCGGGGCCGCCTTGG
GGGTGACTTGGGGCTGGACGCCAGCTCCCCTCTCCGAGGAGCTGTGCCATGAGACCAAGCGGCCT
GGAGGAGGAGCAGGAGCCTCTGCGCAAGCAGTTTCTGTCTGAGGAGAACATGGCCACCCACTTCTCTCAA
CTCAGCCTGCACAATGACCACCCTACTGCAGCCCCCATGACCTTCTCCCAGCCCTGCCCCACTCA
GGAGCCCTTGCTCTGAGCTGCTTCTCTGGCGCTATCCTGGCAGCCTCATCCCTGAGGCCCTCCGTCTGCT
GAGGCTGGGGACACCCAGTCCCCCTACCCTGCAACCCAGCTGGGGACATAATGGAGCTC

ACGCGTACGCGGCCGCTCGAGCAGAACTCATCTCAGAAGAGGATCTGGCAGCAAATGATATCCTGGATT
ACAAGGATGACGACGATAAGGTTTAA

Protein Sequence: >RC217374 protein sequence
 Red=Cloning site Green=Tags(s)

MILQQPLQRGPQGAQRLPRAALGVTWGLDASSPLRGAVPMSTKRREEEQEPLRKQFLSEENMATHFSQ
LSLHNDHPYCSPMTFSPALPLRSPSELLWRYPGSLIPEALRLLRLGDTSPPPYPATPAGDIMEL

TRTRPLEQKLISEEDLAANDILDYKDDDDKV

Chromatograms: https://cdn.origene.com/chromatograms/mk6360_h11.zip

Restriction Sites: SgfI-MluI



[View online »](#)

Cloning Scheme:


ACCN: NM_001002018

ORF Size: 414 bp

OTI Disclaimer: The molecular sequence of this clone aligns with the gene accession number as a point of reference only. However, individual transcript sequences of the same gene can differ through naturally occurring variations (e.g. polymorphisms), each with its own valid existence. This clone is substantially in agreement with the reference, but a complete review of all prevailing variants is recommended prior to use. [More info](#)

OTI Annotation: This clone was engineered to express the complete ORF with an expression tag. Expression varies depending on the nature of the gene.

Components: The ORF clone is ion-exchange column purified and shipped in a 2D barcoded Matrix tube containing 10ug of transfection-ready, dried plasmid DNA (reconstitute with 100 ul of water).

Reconstitution Method:

1. Centrifuge at 5,000xg for 5min.
2. Carefully open the tube and add 100ul of sterile water to dissolve the DNA.
3. Close the tube and incubate for 10 minutes at room temperature.
4. Briefly vortex the tube and then do a quick spin (less than 5000xg) to concentrate the liquid at the bottom.
5. Store the suspended plasmid at -20°C. The DNA is stable for at least one year from date of shipping when stored at -20°C.

RefSeq: [NM_001002018.2](#), [NP_001002018.1](#)

RefSeq Size: 811 bp

RefSeq ORF: 417 bp

Locus ID: 54985

UniProt ID: [Q9NWW0](#)

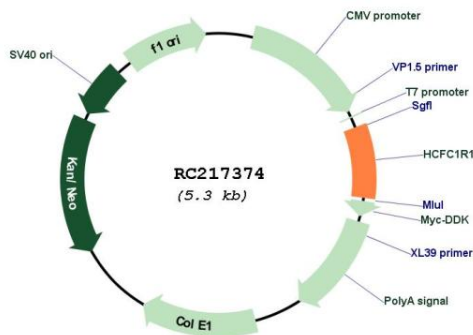
Cytogenetics: 16p13.3

Protein Families: Druggable Genome

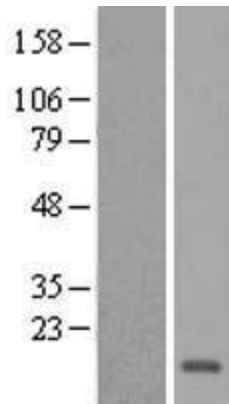
MW: 15.3 kDa

Gene Summary: Regulates HCFC1 activity by modulating its subcellular localization. Overexpression of HCFC1R1 leads to accumulation of HCFC1 in the cytoplasm. HCFC1R1-mediated export may provide the pool of cytoplasmic HCFC1 required for import of virion-derived VP16 into the nucleus.[UniProtKB/Swiss-Prot Function]

Product images:



Circular map for RC217374



Western blot validation of overexpression lysate (Cat# [LY424321]) using anti-DDK antibody (Cat# [TA50011-100]). Left: Cell lysates from untransfected HEK293T cells; Right: Cell lysates from HEK293T cells transfected with RC217374 using transfection reagent MegaTran 2.0 (Cat# [TT210002]).