

Product datasheet for **RC217368**

GNG4 (NM_001098722) Human Tagged ORF Clone

Product data:

Product Type: Expression Plasmids
Product Name: GNG4 (NM_001098722) Human Tagged ORF Clone
Tag: Myc-DDK
Symbol: GNG4
Mammalian Cell Selection: Neomycin
Vector: pCMV6-Entry (PS100001)
E. coli Selection: Kanamycin (25 ug/mL)
ORF Nucleotide Sequence: >RC217368 ORF sequence
Red=Cloning site Blue=ORF Green=Tags(s)

TTTTGTAATACGACTCACTATAGGGCGGCCGGAATTCGTCGACTGGATCCGGTACCGAGGAGATCTGCC
GCC**CGATCGCC**

ATGAAAGAGGGCATGTCTAATAACAGCACCCTAGCATCTCCAAGCCAGGAAAGCTGTGGAGCAGCTAA
AGATGGAAGCCTGTATGGACAGGGTCAAGGTCTCCAGGCAGCTGCGGACCTCCTGGCCTACTGTGAAGC
TCACGTGCGGGAAGATCCTCTCATTCAGTGCCTGCATCAGAAAACCCCTTTCGCGAGAAGAAGTTC
TTTTGTACCATTCTC

ACGCGTACGCGGCCGCTCGAGCAGAACTCATCTCAGAAGAGGATCTGGCAGCAAATGATATCCTGGATT
ACAAGGATGACGACGATAAGGTTTAA

Protein Sequence: >RC217368 protein sequence
Red=Cloning site Green=Tags(s)
MKEGMSNNSTTISQARKAVEQLKMEACMDRVKVSQAAADLLAYCEAHVREDPLIIPVPAENPFREKKF
FCTIL

TRTRPLEQKLISEEDLAANDILDYKDDDDKV

Chromatograms: https://cdn.origene.com/chromatograms/mk6026_c06.zip

Restriction Sites: SgfI-MluI



[View online »](#)

Cloning Scheme:


ACCN: NM_001098722

ORF Size: 225 bp

OTI Disclaimer: The molecular sequence of this clone aligns with the gene accession number as a point of reference only. However, individual transcript sequences of the same gene can differ through naturally occurring variations (e.g. polymorphisms), each with its own valid existence. This clone is substantially in agreement with the reference, but a complete review of all prevailing variants is recommended prior to use. [More info](#)

OTI Annotation: This clone was engineered to express the complete ORF with an expression tag. Expression varies depending on the nature of the gene.

Components: The ORF clone is ion-exchange column purified and shipped in a 2D barcoded Matrix tube containing 10ug of transfection-ready, dried plasmid DNA (reconstitute with 100 ul of water).

- Reconstitution Method:**
1. Centrifuge at 5,000xg for 5min.
 2. Carefully open the tube and add 100ul of sterile water to dissolve the DNA.
 3. Close the tube and incubate for 10 minutes at room temperature.
 4. Briefly vortex the tube and then do a quick spin (less than 5000xg) to concentrate the liquid at the bottom.
 5. Store the suspended plasmid at -20°C. The DNA is stable for at least one year from date of shipping when stored at -20°C.

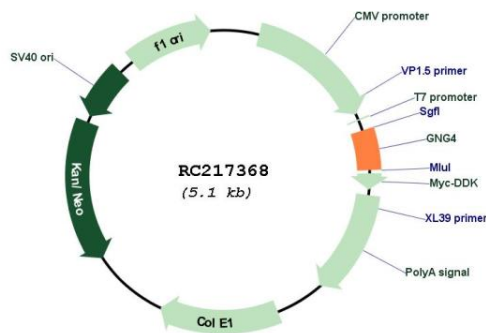
RefSeq: [NM_001098722.2](#)

RefSeq Size: 5123 bp

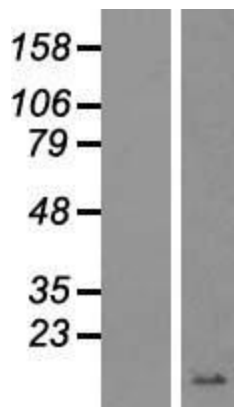
RefSeq ORF: 228 bp

Locus ID:	2786
UniProt ID:	P50150
Cytogenetics:	1q42.3
Protein Families:	Druggable Genome
Protein Pathways:	Chemokine signaling pathway
MW:	8.4 kDa
Gene Summary:	Guanine nucleotide-binding proteins (G proteins) are involved as a modulator or transducer in various transmembrane signaling systems. The beta and gamma chains are required for the GTPase activity, for replacement of GDP by GTP, and for G protein-effector interaction. [UniProtKB/Swiss-Prot Function]

Product images:



Circular map for RC217368



Western blot validation of overexpression lysate (Cat# [LY420668]) using anti-DDK antibody (Cat# [TA50011-100]). Left: Cell lysates from untransfected HEK293T cells; Right: Cell lysates from HEK293T cells transfected with RC217368 using transfection reagent MegaTran 2.0 (Cat# [TT210002]).