

Product datasheet for RC217359

PSMD10 (NM_170750) Human Tagged ORF Clone

Product data:

Product Type: Expression Plasmids
Product Name: PSMD10 (NM_170750) Human Tagged ORF Clone
Tag: Myc-DDK
Symbol: PSMD10
Synonyms: dj889N15.2; p28; p28(GANK)
Mammalian Cell Selection: Neomycin
Vector: pCMV6-Entry (PS100001)
E. coli Selection: Kanamycin (25 ug/mL)
ORF Nucleotide Sequence: >RC217359 representing NM_170750
Red=Cloning site Blue=ORF Green=Tags(s)

TTTTGTAATACGACTCACTATAGGGCGCCGGGAATTCGTCGACTGGATCCGGTACCGAGGAGATCTGCC
GCC**CGATCGCC**

ATGGAGGGGTGTGTCTAACCTAATGGTCTGCAACCTGGCCTACAGCGGAAGCTGGAAGAGTTGAAGG
AGAGTATTCTGGCCGATAAATCCCTGGCTACTAGAACTGACCAGGACAGCAGAAGTGCATTGCACCTGGGC
ATGCTCAGCTGGACATACAGAAATTGTTGAATTTTGTGCAACTGGAGTGCCAGTGAATGATAAAGAC
GATGCAGTTGGTCTCCTCTTCATATTGCGGCTTCTGCTGGCCGGGATGAGATTGTAAGCCCTTCTGG
GAAAAGGTGCTCAAGTGAATGCTGTCAATCAAAATGGCTGTACTCCCTTACATTATGCAGCTTCGAAAA
CAGGCATGAGATCGCTGTCAATGTTACTGGAAGGCGGGCTAATCCAGATGCTAAGGACCATTATGAGGCT
ACAGCAATGCACCGGGCAGCAGCAAGGACT

ACGCGTACGCGGCCGCTCGAGCAGAACTCATCTCAGAAGAGGATCTGGCAGCAAATGATATCCTGGATT
ACAAGGATGACGACGATAAGGTTTAA

Protein Sequence: >RC217359 representing NM_170750
Red=Cloning site Green=Tags(s)
MEGCVSNLMVCNLAISGKLEELKESILADKSLATRTDQDSRTALHWACSHGTEIVEFLLQLGVPVNDKD
DAGWSPLHIAASAGRDEIVKALLGKGAQVNAVQNQNGCTPLHYAASKNRHEIAVMLLEGGANPDAKDHYEA
TAMHRAAKDT

TRTRPLEQKLISEEDLAANDILDYKDDDDKV

Chromatograms: https://cdn.origene.com/chromatograms/mk6496_h10.zip



[View online >](#)

Restriction Sites: SgfI-MluI

Cloning Scheme:



ACCN: NM_170750

ORF Size: 453 bp

OTI Disclaimer: The molecular sequence of this clone aligns with the gene accession number as a point of reference only. However, individual transcript sequences of the same gene can differ through naturally occurring variations (e.g. polymorphisms), each with its own valid existence. This clone is substantially in agreement with the reference, but a complete review of all prevailing variants is recommended prior to use. [More info](#)

OTI Annotation: This clone was engineered to express the complete ORF with an expression tag. Expression varies depending on the nature of the gene.

Components: The ORF clone is ion-exchange column purified and shipped in a 2D barcoded Matrix tube containing 10ug of transfection-ready, dried plasmid DNA (reconstitute with 100 ul of water).

Reconstitution Method:

1. Centrifuge at 5,000xg for 5min.
2. Carefully open the tube and add 100ul of sterile water to dissolve the DNA.
3. Close the tube and incubate for 10 minutes at room temperature.
4. Briefly vortex the tube and then do a quick spin (less than 5000xg) to concentrate the liquid at the bottom.
5. Store the suspended plasmid at -20°C. The DNA is stable for at least one year from date of shipping when stored at -20°C.

RefSeq: [NM_170750.2](#)

RefSeq Size: 1467 bp

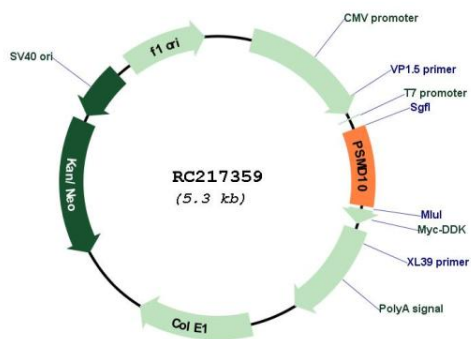
RefSeq ORF: 456 bp

Locus ID: 5716

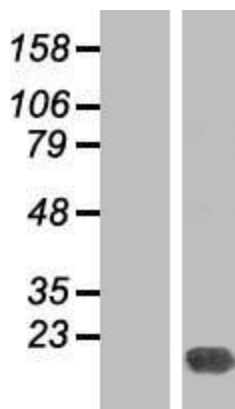
UniProt ID: [O75832](#)
 Cytogenetics: Xq22.3
 MW: 16 kDa

Gene Summary: This gene encodes a subunit of the PA700/19S complex, which is the regulatory component of the 26S proteasome. The 26S proteasome complex is required for ubiquitin-dependent protein degradation. This protein is a non-ATPase subunit that may be involved in protein-protein interactions. Aberrant expression of this gene may play a role in tumorigenesis. Two transcripts encoding different isoforms have been described. Pseudogenes have been identified on chromosomes 3 and 20.[provided by RefSeq, Mar 2011]

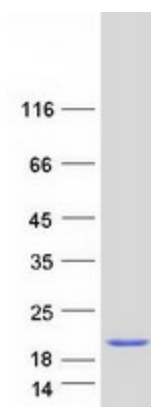
Product images:



Circular map for RC217359



Western blot validation of overexpression lysate (Cat# [LY406867]) using anti-DDK antibody (Cat# [TA50011-100]). Left: Cell lysates from untransfected HEK293T cells; Right: Cell lysates from HEK293T cells transfected with RC217359 using transfection reagent MegaTran 2.0 (Cat# [TT210002]).



Coomassie blue staining of purified PSMD10 protein (Cat# [TP317359]). The protein was produced from HEK293T cells transfected with PSMD10 cDNA clone (Cat# RC217359) using MegaTran 2.0 (Cat# [TT210002]).