

Product datasheet for **RC217357**

ZNF791 (NM_153358) Human Tagged ORF Clone

Product data:

Product Type:	Expression Plasmids
Product Name:	ZNF791 (NM_153358) Human Tagged ORF Clone
Tag:	Myc-DDK
Symbol:	ZNF791
Mammalian Cell Selection:	Neomycin
Vector:	pCMV6-Entry (PS100001)
E. coli Selection:	Kanamycin (25 ug/mL)



[View online »](#)

ORF Nucleotide Sequence:

>RC217357 representing NM_153358
 Red=Cloning site Blue=ORF Green=Tags(s)

TTTTGTAATACGACTCACTATAGGGCGGCCGGGAATTCGTCGACTGGATCCGGTACCGAGGAGATCTGCC
 GCC**CGCATCGCC**

ATGGACTCAGTGGCTTTTGAGGATGTGTCTGTGAGCTTCAGCCAGGAGGAGTGGCTCTGCTGGCTCCTT
 CACAGAAGAACTCTACAGAGATGTGATGCAGGAAACATTCAAGAACCCTGGCATCTATAGGGGAAAAATG
 GGAAGACCCGAATGTTGAAGATCAACACAAAAACCAAGGACGAAATCTAAGAAGCCATACGGGAGAGAGA
 CTCTGTGAAGGTAAGAAGGTAGTCAATGTGCAGAAAACCTCAGTCCCAATCTCAGTGTGACGAAGAAGA
 CTGCCGGAGTAAAACCATATGAGTGTACTATCTGTGGAAAAGCCTTCATGCGTCTCTCATCCCTTACTAG
 ACACATGAGGTCTCACACTGGATACGAGCTATTTGAGAAGCCATATAAATGTAAGGAGTGTGAGAAAAGCC
 TTTAGTTATCTCAAATCCTTTCAAAGACATGAAAGGAGTCACACTGGAGAAAAACCTATAAATGTAAC
 AATGTGGAAAAACCTTCATATATCACCAGCCCTTTCAAAGACATGAGCGGACTCACATTGGAGAAAAAC
 CTATGAATGTAAGCAATGTGAAAAAGCTCTTAGTTGTTCCAGTTCGCTTCGAGTTCATGAAAGGATTCAC
 ACTGGAGAAAAAGCCCTATGAATGTAACAATGTGGGAAAGCCTTCAGTTGTTCCAGTTCATTTCGAGTAC
 ACGAAAGAACTCACACTGGAGAGAAACCTATGCATGTAAAGAAATGTGGGAAAGCCTTCATTTCCACAC
 AAGTGTCTAACACACATGATAACACACACCGGAGATAGACCTTATAAATGCAAAGAATGTGAAAGGCA
 TTCATTTTTCCAGTTTTTACGAGTACATGAAAGAATTCACACTGGAGAGAAACCTATAAATGTAAC
 AATGTGGTAAAGCCTTCAGATGTCCACCTCCATTCAAATTCATGAAAGAATTCATACTGGAGAGAAAGCC
 CTATAAATGTAAGAATGTGGGAAATCTTTCAGTGCACGCCAGCCTTTCGAGTACACGTGAGAGTGCAT
 ACTGGAGAGAAACCTATAAGTGTAAAGAATGTGGGAAAGCCTTAGTAGAATCAGTACTTTTCAATAAC
 ATGAAAGGACTCACACTGGAGAGAAACCTACGAATGTAAGAAATGTGGGAAAGCCTTTCAATTATCTCT
 AGATTTGAAAATCCACAAGAGAAATCACACTGGAGAAAAACCTATGAGTGTAAAGAAATGTGCAAAAAAC
 TTCATTTCTCTTGAAGCTTTTCAAGACACATGATCACCCACACTGGAGACGGACCTTATAAATGTAGGG
 ACTGTGGGAAAGGTGTTTCTTTCTAGTGCCTTACGAACACATGAAAGAATTCACACTGGAGAGAAAC
 CTATGAATGTAACAATGTGAAAGCCTTTAGTTGTTCTAGTTACATTCGGATACATAAAGAAGTACAC
 ACTGGGAGAAACCTTATGAATGTAAGGAATGCGGGAAGGCTTTATTTATCCACAAGCTTTCAAGGAC
 ACATGAGAATGCATACTGGAGAGAAACCTATAAATGTAAGAATGTGGGAAAGCCTTTAGTCTTCACAG
 TTCCTTTCAAAGACATAACAAGAAATTCACAATTATGAGAAACCTCTTGAATGTAAGCAATGTGAAAAAGCC
 TTCAGTGTGCCATCCTTAAAAAACATATGAGAATGCACAATCGA

ACGCGTACGCGGCCGCTCGAGCAGAAACTCATCTCAGAAGAGGATCTGGCAGCAAATGATATCCTGGATT
 ACAAGGATGACGACGATAAGGTTTAA

Protein Sequence:

>RC217357 representing NM_153358
 Red=Cloning site Green=Tags(s)

MDSVAFEDVSVFSQEEWALLAPSQKLYRDMQETFKNLASIGEKWEDPNVEDQHKNQGRNLRSHGTGER
 LCEGKEGSQCAENFSPNLSVTKKTAGVKPYECTICGKAFMRLSSLTRHMRSHTGYELFEKPYKCKEKEKA
 FSYLKSFRHERSHTGKPYKCKQCGKTFIYHQPFQRHERTHIGEKPYECKQCGKALSCSSSLRVHERI
 TGEKPYECKQCGKAFSCSSSIRVHERHTGKPYACKECGKAFISHTSVLTHMITHNGDRPYKCKEKGKA
 FIFPSFLRVHERIHTGKPYKCKQCGKAFRCSTSIQIHERIHTGKPYKCKEKGKFSARPFRVHVRVH
 TGEKPYKCKEKGKAFSRISYFRIHERHTGKPYECKKCGKTFNYPLDLKIHKRNHTGKPYECKEAKT
 FISLENFRRHMIHTGDGPYKCRDCGVFIFPSALRHTERTHTGKPYECKQCGKAFSCSSYIRIHKRTH
 TGEKPYECKEKGKAFIYPTSFQGHMRMHTGKPYKCKEKGKAFSLHSSFQRHTRIHNYPECKQCGKA
 FSVSTSLKKHMRMHR

TRTRPLEQKLISEEDLAANDILDYKDDDDKV

Chromatograms:

https://cdn.origene.com/chromatograms/mk8015_b12.zip

Restriction Sites:

Sgfl-MluI

Cloning Scheme:


ACCN: NM_153358

ORF Size: 1728 bp

OTI Disclaimer: The molecular sequence of this clone aligns with the gene accession number as a point of reference only. However, individual transcript sequences of the same gene can differ through naturally occurring variations (e.g. polymorphisms), each with its own valid existence. This clone is substantially in agreement with the reference, but a complete review of all prevailing variants is recommended prior to use. [More info](#)

OTI Annotation: This clone was engineered to express the complete ORF with an expression tag. Expression varies depending on the nature of the gene.

Components: The ORF clone is ion-exchange column purified and shipped in a 2D barcoded Matrix tube containing 10ug of transfection-ready, dried plasmid DNA (reconstitute with 100 ul of water).

- Reconstitution Method:**
1. Centrifuge at 5,000xg for 5min.
 2. Carefully open the tube and add 100ul of sterile water to dissolve the DNA.
 3. Close the tube and incubate for 10 minutes at room temperature.
 4. Briefly vortex the tube and then do a quick spin (less than 5000xg) to concentrate the liquid at the bottom.
 5. Store the suspended plasmid at -20°C. The DNA is stable for at least one year from date of shipping when stored at -20°C.

RefSeq: [NM_153358.3](#)

RefSeq Size: 2476 bp

RefSeq ORF: 1731 bp

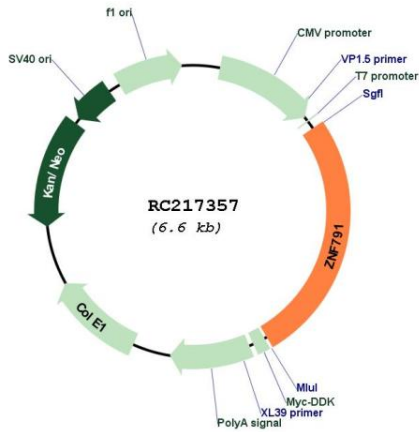
Locus ID: 163049

UniProt ID: [Q3KP31](#)

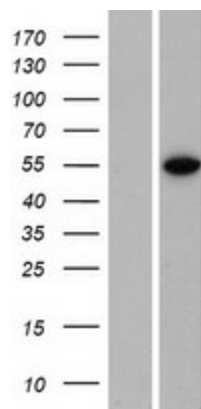
Cytogenetics: 19p13.13

Domains: KRAB, zf-C2H2
Protein Families: Transcription Factors
MW: 66.7 kDa
Gene Summary: May be involved in transcriptional regulation.[UniProtKB/Swiss-Prot Function]

Product images:



Circular map for RC217357



Western blot validation of overexpression lysate (Cat# [LY407071]) using anti-DDK antibody (Cat# [TA50011-100]). Left: Cell lysates from untransfected HEK293T cells; Right: Cell lysates from HEK293T cells transfected with RC217357 using transfection reagent MegaTran 2.0 (Cat# [TT210002]).