

## Product datasheet for **RC217353**

### Transglutaminase 2 (TGM2) (NM\_004613) Human Tagged ORF Clone

#### Product data:

Product Type:	Expression Plasmids
Product Name:	Transglutaminase 2 (TGM2) (NM_004613) Human Tagged ORF Clone
Tag:	Myc-DDK
Symbol:	Transglutaminase 2
Synonyms:	G(h); hTG2; TG(C); TGC; tTG
Mammalian Cell Selection:	Neomycin
Vector:	pCMV6-Entry (PS100001)
E. coli Selection:	Kanamycin (25 ug/mL)



[View online »](#)

ORF Nucleotide  
Sequence:

>RC217353 representing NM\_004613  
Red=Cloning site Blue=ORF Green=Tags(s)

TTTTGTAATACGACTCACTATAGGGCGGCCGGGAATTCGTCGACTGGATCCGGTACCGAGGAGATCTGCC  
GCCGCGATCGCC

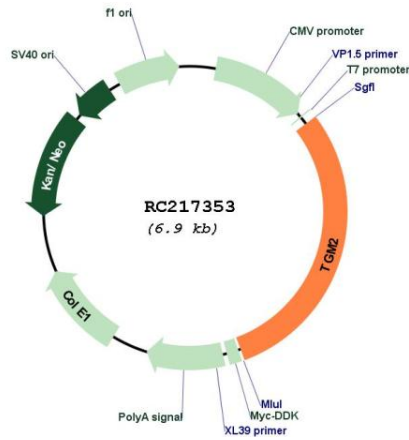
ATGCCGAGGAGCTGGTCTTAGAGAGGTGTGATCTGGAGCTGGAGACCAATGGCCGAGACCACCACACGG  
CCGACCTGTGCCGGGAGAAGCTGGTGGTGCACGGGGCCAGCCCTTCTGGCTGACCCTGCACTTTGAGGG  
CCGCAACTACGAGGCCAGTGTAGACAGTCTCACCTTCAGTGTCTGTGACCGGCCAGCCCTAGCCAGGAG  
GCCGGGACCAAGGCCCGTTTTCCACTAAGAGATGCTGTGGAGGAGGGTACTGGACAGCCACCGTGGTGG  
ACCAGCAAGACTGCACCCTCTCGCTGCAGCTCACACCCCGGCCAACGCCCCATCGGCCTGTATCGCCT  
CAGCCTGGAGGCCTCCACTGGCTACCAGGGATCCAGCTTTGTGCTGGGCCACTTCATTTTGTCTTCAAC  
GCCTGGTGCCAGCGGATGCTGTGTACCTGGACTCGGAAGAGGAGCGGCAGGAGTATGTCCTCACCCAGC  
AGGGCTTTATCTACCAGGGCTCGGCCAAGTTCATCAAGAACATACCTTGAATTTTGGGCAGTTTGAAGA  
TGGGATCTAGACATCTGCCTGATCCTTCTAGATGTCAACCCCAAGTTCCTGAAGAACCGCGGCCGTGAC  
TGCTCCCGCCGACGACGCCCGTCTACGTGGGCCGGTGGTGGTGGCATGGTCAACTGCAACGATGACC  
AGGGTGTGCTGCTGGGACGCTGGGACAACAACACGCGGACGGCGTCAGCCCATGTCCTGGATCGGCAG  
CGTGGACATCCTGCGGCCTGGAAGAACCACGGCTGCCAGCGCTCAAGTATGGCCAGTGTGGTCTTC  
GCCGCCGTGGCCTGCACAGTGTGAGGTGCCTGGGCATCCCTACCCGCGCTGTGACCAACTACAACCTCGG  
CCCATGACCAGAACAGCAACCTTCTCATCGAGTACTCCGCAATGAGTTTGGGGAGATCCAGGGTGACAA  
GAGCGAGATGATCTGGAACCTCCACTGCTGGGTGGAGTGTGGATGACCAGGCCGACCTGCAGCCGGGG  
TACGAGGGCTGGCAGGCCCTGGACCAACGCCCCAGGAGAAGAGCGAAGGGACGTAAGTGTGGCCAG  
TTCCAGTTCGTGCCATCAAGGAGGGCGACCTGAGCACCAAGTACGATGCGCCCTTTGTCTTGGCGAGGT  
CAATGCCGACGTGGTAGACTGGATCCAGCAGGACGATGGGTCTGTGCACAAATCCATCAACCGTTCCCTG  
ATCGTTGGGCTGAAGATCAGCACTAAGAGCGTGGGCCGAGACGAGCGGGAGGATATCACCCACACCTACA  
AATACCCAGAGGGTCTCAGAGGAGAGGGAGGCCTTACAAGGGCGAACCACTGAACAAACTGGCCGA  
GAAGGAGGAGACAGGGATGGCCATGCGGATCCGTGTGGGCCAGAGCATGAACATGGGCAGTACTTTGAC  
GTCTTTGCCACATACCAACAACACCGCTGAGGAGTACGTCTGCCGCTCCTGCTGTGCCCGCACCG  
TCAGCTACAATGGGATCTTGGGGCCGAGTGTGGCACCAAGTACCTGCTCAACCTCAACCTGGAGCCTTT  
CTCTGAGAAGAGCGTTCCCTTTTGCATCCTCTATGAGAAATACCGTACTGCCTACGGAGTCCAACCTC  
ATCAAGGTGCGGGCCCTCCTCGTGGAGCCAGTTATCAACAGCTACCTGCTGGCTGAGAGGGACCTTACC  
TGGAGAATCCAGAAATCAAGATCCGGATCCTTGGGGAGCCCAAGCAGAAACGCAAGCTGGTGGCTGAGGT  
GTCCCTGCAGAACCCGCTCCCTGTGGCCCTGGAAGGCTGCACCTTCACTGTGGAGGGGGCCGCCTGACT  
GAGGAGCAGAAGACGGTGGAGATCCCAGACCCCGTGGAGGCAGGGGAGGAAGTTAAGGTGAGAATGGACC  
TGCTGCCGCTCCACATGGGCCTCCACAAGCTGGTGGTGAACCTCGAGAGCGACAAGCTGAAGGCTGTGAA  
GGGCTCCGGAATGTCATCATTGGCCCCGCC

ACGCGTACGCGGCCGCTCGAGCAGAACTCATCTCAGAAGAGGATCTGGCAGCAATGATATCCTGGATT  
ACAAGGATGACGACGATAAGGTTTAA

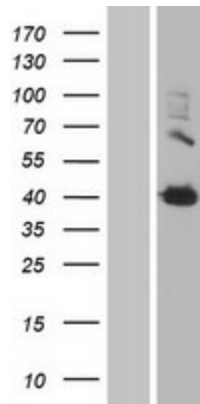


<b>Components:</b>	The ORF clone is ion-exchange column purified and shipped in a 2D barcoded Matrix tube containing 10ug of transfection-ready, dried plasmid DNA (reconstitute with 100 ul of water).
<b>Reconstitution Method:</b>	<ol style="list-style-type: none"><li>1. Centrifuge at 5,000xg for 5min.</li><li>2. Carefully open the tube and add 100ul of sterile water to dissolve the DNA.</li><li>3. Close the tube and incubate for 10 minutes at room temperature.</li><li>4. Briefly vortex the tube and then do a quick spin (less than 5000xg) to concentrate the liquid at the bottom.</li><li>5. Store the suspended plasmid at -20°C. The DNA is stable for at least one year from date of shipping when stored at -20°C.</li></ol>
<b>Note:</b>	Plasmids are not sterile. For experiments where strict sterility is required, filtration with 0.22um filter is required.
<b>RefSeq:</b>	<a href="#">NM_004613.4</a>
<b>RefSeq Size:</b>	3937 bp
<b>RefSeq ORF:</b>	2064 bp
<b>Locus ID:</b>	7052
<b>UniProt ID:</b>	<a href="#">P21980</a>
<b>Cytogenetics:</b>	20q11.23
<b>Domains:</b>	Transglutamin_C, TGc
<b>Protein Families:</b>	Druggable Genome
<b>Protein Pathways:</b>	Huntington's disease
<b>MW:</b>	77.1 kDa
<b>Gene Summary:</b>	Transglutaminases are enzymes that catalyze the crosslinking of proteins by epsilon-gamma glutamyl lysine isopeptide bonds. While the primary structure of transglutaminases is not conserved, they all have the same amino acid sequence at their active sites and their activity is calcium-dependent. The protein encoded by this gene acts as a monomer, is induced by retinoic acid, and appears to be involved in apoptosis. Finally, the encoded protein is the autoantigen implicated in celiac disease. Two transcript variants encoding different isoforms have been found for this gene. [provided by RefSeq, Jul 2008]

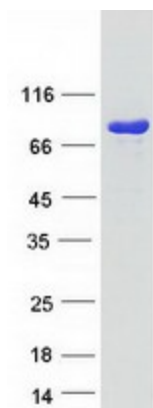
Product images:



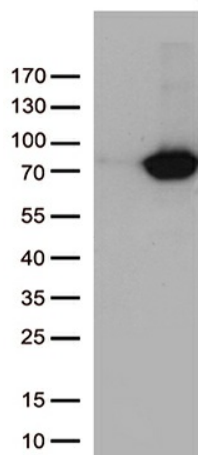
Circular map for RC217353



Western blot validation of overexpression lysate (Cat# [LY401458]) using anti-DDK antibody (Cat# [TA50011-100]). Left: Cell lysates from untransfected HEK293T cells; Right: Cell lysates from HEK293T cells transfected with RC217353 using transfection reagent MegaTran 2.0 (Cat# [TT210002]).



Coomassie blue staining of purified TGM2 protein (Cat# [TP317353]). The protein was produced from HEK293T cells transfected with TGM2 cDNA clone (Cat# RC217353) using MegaTran 2.0 (Cat# [TT210002]).



HEK293T cells were transfected with the pCMV6-ENTRY control (Cat# [PS100001], Left lane) or pCMV6-ENTRY TGM2 (Cat# RC217353, Right lane) cDNA for 48 hrs and lysed. Equivalent amounts of cell lysates (5 ug per lane) were separated by SDS-PAGE and immunoblotted with anti-TGM2 (Cat# [TA809245]). Positive lysates [LY401458] (100ug) and [LC401458] (20ug) can be purchased separately from OriGene.