

## Product datasheet for **RC217350**

### FAM71D (NM\_173526) Human Tagged ORF Clone

#### Product data:

Product Type:	Expression Plasmids
Product Name:	FAM71D (NM_173526) Human Tagged ORF Clone
Tag:	Myc-DDK
Symbol:	FAM71D
Synonyms:	C14orf54
Mammalian Cell Selection:	Neomycin
Vector:	pCMV6-Entry (PS100001)
E. coli Selection:	Kanamycin (25 ug/mL)



[View online »](#)

**ORF Nucleotide Sequence:**

>RC217350 representing NM\_173526  
 Red=Cloning site Blue=ORF Green=Tags(s)

TTTTGTAATACGACTCACTATAGGGCGGCCGGAATTCGTCGACTGGATCCGGTACCGAGGAGATCTGCC  
 GCC**CGGATCGCC**

ATGAAGAAGAACCAGCAAGACTACCATGAGGATCAATAAGCAAGATGCTCTCTGCACCCACACTCCC  
 ATGATCCGAGAGATCTTCAAATATGTTGGATGGAGGAGAGTATGCCCTTTTGTATCTCCTCCCATGTT  
 AGAGAGCAATTTTATCCAGGTCAACAGAAGAGGTGAATCCATTTACCTTCATAACCGAGCCAACGGGTG  
 ACCGTAGGCATCTGTTTTCCAGCTCCACCCACAAGATCCCAATGTGATGCTACTGGCCCATCTGACAC  
 CTGGTGCCAAAAAGATACAGAAACCCTGTTTAAAGTCTCCTGACATCTCCTCTGCAGAGAACTAGT  
 GCTCACCAGGTTTCTCCCTCTGCAGTTTGTGACTCTTTCTGTGCATGATGCGGAGAACATGAGCCTGAAA  
 GTAAGCTGGTGAGTGGTCGAGCCTACTACTTACAGCTCTGCACCTCTGCATATAAACAGGACACCTTGT  
 TTTCTCAATGGGTGGCCCTCATCTCCCTCTTGAATCAGGAGAAAGCCAAAGTTTCCAAAGTGTGGAGGT  
 TTCAAGTCTCTCAGGAATTACGAATAGCACAGACATCACAGGCTCCATGGATGTGACGGATGTCACCACG  
 TTCACAGCCATCCTGACCCCGTACATGTATGCAGGTACAGGCCCTGAACATGTCAGGAGACAGCATAGATT  
 TCCCAGAATTCACAGACATCACCGACATCACAGATGTCACAGATCTTCCAGAAAAAGAGTCCCAGAGGT  
 CCCGGATGTAAGAATTGTACAGAAGTCATAGAAGTCAGAGAAGCCACGGAAGTCACAGACAGCTCTGAT  
 ATTACAAACTGCTCGGGAGTCACAGTGGTGTGTTGAAAACAATGACTTAATCAGGGCCAAGCAAGAGGAGA  
 AGGAAAAATTGAAAAACATCTGAAGCCTGGGTGTTTACAAGATACAAAAAGTAAGAGTGAGTTGAAAGA  
 ATCCTCAAACATGTACCATCTCAAACATAACACTGACTTTTGAAGTAAAAGATATTTCAAACCTACC  
 TTGACCCAGTAGAAAGTGAGGCAAATACATCCAAGGAGATGAAGGATAAGACCTCTGAAGAAAAGATGC  
 CTGATTTTCAGAGCACAGCTCTCAAGGCTGAAGAATCCAGGAGCTTGAGAACTGAATCAAACACTTCAGT  
 TCTCTCCCTCATATCAAATCTCCTTCTAATTTCTCAAACCTGTGCCTCATCTGTCTGCCCTTTCTCA  
 AGGGAA

**ACGCGT**ACGCGGCCGCTCGAGCAGAAACTCATCTCAGAAGAGGATCTGGCAGCAAATGATATCCTGGATT  
 ACAAGGATGACGACGATAAGGTTTAA

**Protein Sequence:**

>RC217350 representing NM\_173526  
 Red=Cloning site Green=Tags(s)

MKKNTSKTTMRINKQDALCTPHSHDPRDLQNMLDGGEYAPFVSPPMLESNFIQVNRREGESIYLHNRANWV  
 TVGICFSSSTHKIPNVMLLAHLTPGAQKDTETLTKSLLTSPPAEKLVLTRFLPLQFVTLVHDAENMSLK  
 VKLVSGRAYYLQLCTSAYKQDTLFSQWVALISLLNQEAKAKVSKVSEVSSLGITNSTDITGSMVDVDTT  
 FTAILTPYMYAGTGPEHVRDSIDFPEFTDITDITDVTDLPENEVPEVPDVRIVTEVIEVREATEVTDSSD  
 ITNCSGVTVVFENNDLIRAKQEEKEKLNILKPGCLQDTKSKSELKESKHVTISNITLTFEGKRYFQTT  
 LTPVESEANTSKEMDKTSEEKMPDFQSTALKAEESRSLRTESENTSVLSPHIKSPSNFLKLVPHLSAPFS  
 RE

**TR**TRPLEQKLISEEDLAANDILDYKDDDDKV

**Chromatograms:**

[https://cdn.origene.com/chromatograms/mk8015\\_d03.zip](https://cdn.origene.com/chromatograms/mk8015_d03.zip)

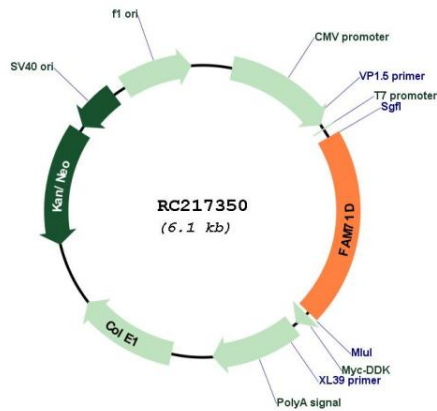
**Restriction Sites:**

Sgfl-Mlul

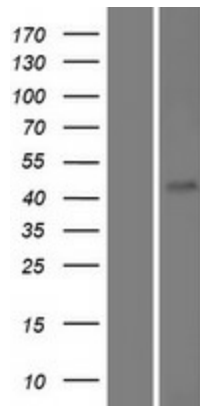


MW: 46.9 kDa

Product images:



Circular map for RC217350



Western blot validation of overexpression lysate (Cat# [LY406455]) using anti-DDK antibody (Cat# [TA50011-100]). Left: Cell lysates from untransfected HEK293T cells; Right: Cell lysates from HEK293T cells transfected with RC217350 using transfection reagent MegaTran 2.0 (Cat# [TT210002]).