

Product datasheet for **RC217348**

TULP4 (NM_001007466) Human Tagged ORF Clone

Product data:

Product Type:	Expression Plasmids
Product Name:	TULP4 (NM_001007466) Human Tagged ORF Clone
Tag:	Myc-DDK
Symbol:	TULP4
Synonyms:	TUSP
Mammalian Cell Selection:	Neomycin
Vector:	pCMV6-Entry (PS100001)
E. coli Selection:	Kanamycin (25 ug/mL)



[View online »](#)

ORF Nucleotide
Sequence:

>RC217348 representing NM_001007466
Red=Cloning site Blue=ORF Green=Tags(s)

TTTTGTAATACGACTCACTATAGGGCGGCCGGAATTCGTCGACTGGATCCGGTACCGAGGAGATCTGCC
GCCGCGATCGCC

ATGTATGCAGCAGTGAACATGGCCTGTGCTTTCAGTACTCCAACATCCTGTGCCTGTCTGGAAGG
GGCGTGTCCCAAGAGTGAGAAGGAGAAGCCTGTGTGCAGGAGACGCTACTATGAGGAAGGCTGGCTGGC
CACGGGCAACGGGCGAGGAGTGGTTGGGGTGACTTTCACCTCTAGTCACTGTCGACAGGGACAGGAGTACT
CCACAGAGGATAAATTTCAACCTCCGGGCCCACAATAGCGAGGTTGTGCTGGTGAGGTGGAATGAGCCCT
ACCAGAACTGGCCACGTGCGATGCGGACGGAGGCATATTCGTGTGGATTCACTACGAGGGCAGGTGGTC
TGTGGAGCTGGTCAACGACCGGGGCGCAGGTGAGTGATTTACGTGGAGCCATGATGAACTCAAGCA
CTTATTTCTATCGAGATGGTTTGTCTGGTTGGGTCTGTGAGTGGACAAGACACTGGTCATCCGAAA
TCAACTGGAAAGTCAAATACGTGTGGCATATGGACTCCTGACGACCAACAGGTGCTGTTTGGCAGGC
CGATGGGCAGGTGATTGTATGGATTGCCACGGCAGAATGCTGGCCACGTCCTTTCACGAGTACAGC
GGTGTCTCGGCATGTCTGGAACTACCGATCTTCTGGTGGAGGACAGCAGCGAGAGCGACACGGACT
CAGATGACTACGCCCCTCCCAAGATGGTCCGGCAGCATATCCATCCCAGTGCAGAATCAAGCCTCT
GCTCACCGTCAGCTTACCTCGGGAGACATCAGCTTAATGAACAACACTACGATGACTTGTCTCCCACGGTC
ATCCGCTCAGGGCTGAAAGAGGTGGTAGCCAGTGGTGACACAGGGGGACTTGTGGCAGTCGCTGGGA
TGGAACGGCAGACCCAGCTTGGTGAGCTTCCCAATGGTCCCCTTCTGAAGAGTGCCATGGTCAAGTTCTA
CAATGTTCTGGGGAGCACATCTTCACTGGACACTCTCGTGCAGCGCCCCATCATCTCCATCTGCTGG
GGTCACCGGATTCGAGGCTGTTGATGGCATCAGGACAGCCCTGTACGTGGTGGTGTGGAGCACCGGG
TGTCCAGCCTGCAGCTGCTGTGCCAGCAGGCCATCGCCAGCACCTTGCCTGAGGACAAGGACGTCAGCAA
GCTGACTCTGCCCCCGCCTCTGCTCCTACCTCTCCACTGCCTTCATCCCCACCATCAAGCCCCCAATT
CCAGATCCGAACAACATGAGAGACTTTGTGAGTACCCATCAGCCGCAACGAGCGGCTGCACTGCACCA
TGAAGCGCACAGAGGACGACCCGGAGGTGGGCGGCCCGTGTACACGCTCTACCTGGAGTACCTGGGCGG
GCTTGTGCCATCCTCAAAGGGCGGCATCAGCAAGCTGCGGCCAGAGTTCGTATCATGGACCCGCGG
ACAGATAGCAAACCAGATGAAATCTATGGGAACAGCTTGATTTCTACTGTGATCGACAGCTGCAACTGCT
CAGACTCCAGTGACATTGAGCTGAGTGATGACTGGGCTGCCAAGAAATCTCCAAAATCTCCAGAGCTAG
CAAATCACCCAACTCCCAAGGATCAGCATTGAGGCCGCAAGTACCCAAAGTGCCCCGGGCTGCTCAG
GAGCTCTCCCGTCCCCACGGTTGCCCTGCGCAAGCCCTCTGTGGGCTCGCCAGCCTGACTCGGAGAG
AGTTTCTTTGAAGACATCACTCAGCACAATATCTTGCTCAGGTCACGTCTAATATCTGGGGAACCAA
ATTTAAGATTGTGGGCTTGGCTGCTTCTGCCAACCAACCTCGGTGCAGTAATCTATAAAACCAGCCTC
CTGCATCTCCAGCCGCGCAGATGACCATTTATCTCCAGAAGTTCGGAAAATTTCCATGGACTATATTA
ATTTACCTGTCTTCAACCCAAATGTTTTAGTGAAGATGAAGATGATTTACCAGGTGATGCAATTTGGAC
GGAT

ACGCGTACGCGGCCGCTCGAGCAGAACTCATCTCAGAAGAGGATCTGGCAGCAAATGATATCCTGGATT
ACAAGGATGACGACGATAAGGTTTAA

Protein Sequence: >RC217348 representing NM_001007466
Red=Cloning site Green=Tags(s)

```

MYAAVEHGPNLCSNLSLCLSWKGRVPKSEKEKPVCRRRYYEEGWLATGNRGRVGVVFTTSSHCRRDRST
PQRINFNLRGHNSEVVLVRWNEPYQKLATCDADGGIFVWIQYEGRWSVELVNDRGAQVSDFTWSDHGTQA
LISYRDGFVLVGSVSGQRHWSSEINLESQITCGIWTDPDQVLFGTADGQVIMDCHGRMLAHVLLHESD
GVLGMSWNYPIFLVEDSSESDTSDDYAPPQDGPAAYPVQNIKPLLVTSFTSGDISLMNNYDDLSPV
IRSGLKEYVAQWCTQGDLLAVAGMERQTQLGELPNGLLKSAMVKFYNVRGEHIFLDTLVQRPIISICW
GHRDSRLLMASGPALYVVRVEHRVSSLQLLCCQAIASSTLRDKDVSKLTLPPRLCSYLSTAFIPTIKPPI
PDPNNMRDFVSYPSAGNERLHCTMKRTEDDPEVGGPCYTLYLEYLGGVLPILKGRRIKLRPEFVIMDPR
TDSKPEIYGNSLISTVIDSCNCSDDSDIELSDDWAAKSPKISRASKSPKLRPISIEARKSPKLPRAAQ
ELSRSPRLPLRKPSVGSPLTRREFFEDITQHNYLAQVTSNIWGTGFKIVGLAAFLPTNLGAVIYKTSL
LHLQPRQMTIYLPEVRKISMDYINLPVFNPNVFSEDEDDLPGDAVWTD
    
```

TRTRPLEQKLISEEDLAANDILDYKDDDDKV

Chromatograms: https://cdn.origene.com/chromatograms/mk8072_e07.zip

Restriction Sites: SgfI-MluI

Cloning Scheme:



ACCN: NM_001007466

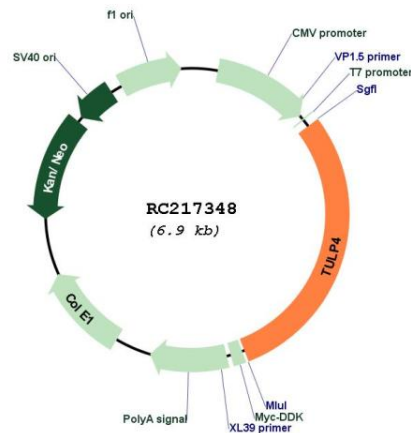
ORF Size: 2034 bp

OTI Disclaimer: The molecular sequence of this clone aligns with the gene accession number as a point of reference only. However, individual transcript sequences of the same gene can differ through naturally occurring variations (e.g. polymorphisms), each with its own valid existence. This clone is substantially in agreement with the reference, but a complete review of all prevailing variants is recommended prior to use. [More info](#)

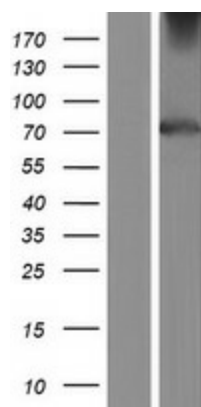
OTI Annotation: This clone was engineered to express the complete ORF with an expression tag. Expression varies depending on the nature of the gene.

Components:	The ORF clone is ion-exchange column purified and shipped in a 2D barcoded Matrix tube containing 10ug of transfection-ready, dried plasmid DNA (reconstitute with 100 ul of water).
Reconstitution Method:	<ol style="list-style-type: none">1. Centrifuge at 5,000xg for 5min.2. Carefully open the tube and add 100ul of sterile water to dissolve the DNA.3. Close the tube and incubate for 10 minutes at room temperature.4. Briefly vortex the tube and then do a quick spin (less than 5000xg) to concentrate the liquid at the bottom.5. Store the suspended plasmid at -20°C. The DNA is stable for at least one year from date of shipping when stored at -20°C.
RefSeq:	NM_001007466.1 , NP_001007467.1
RefSeq Size:	8622 bp
RefSeq ORF:	2037 bp
Locus ID:	56995
UniProt ID:	Q9NRJ4
Cytogenetics:	6q25.3
Protein Families:	Druggable Genome, Transcription Factors
MW:	75.7 kDa
Gene Summary:	May be a substrate-recognition component of a SCF-like ECS (Elongin-Cullin-SOCS-box protein) E3 ubiquitin ligase complex which mediates the ubiquitination and subsequent proteasomal degradation of target proteins.[UniProtKB/Swiss-Prot Function]

Product images:



Circular map for RC217348



Western blot validation of overexpression lysate (Cat# [LY423487]) using anti-DDK antibody (Cat# [TA50011-100]). Left: Cell lysates from untransfected HEK293T cells; Right: Cell lysates from HEK293T cells transfected with RC217348 using transfection reagent MegaTran 2.0 (Cat# [TT210002]).