

Product datasheet for **RC217343L3V**

CLEC1B (NM_001099431) Human Tagged ORF Clone Lentiviral Particle

Product data:

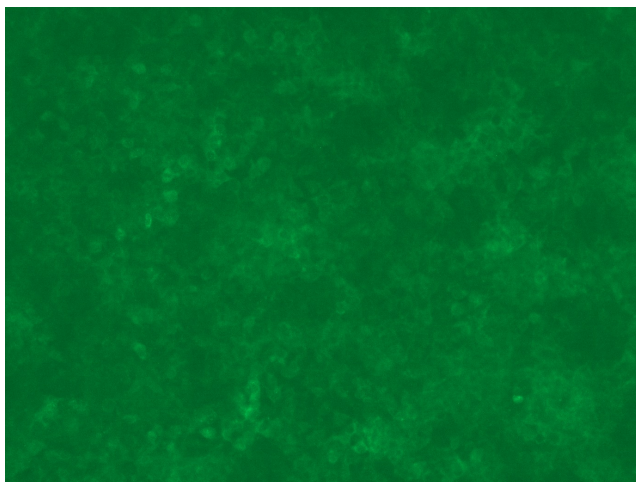
Product Type:	Lentiviral Particles
Product Name:	CLEC1B (NM_001099431) Human Tagged ORF Clone Lentiviral Particle
Symbol:	CLEC1B
Synonyms:	1810061113Rik; CLEC2; CLEC2B; PRO1384; QDED721
Mammalian Cell Selection:	Puromycin
Vector:	pLenti-C-Myc-DDK-P2A-Puro (PS100092)
Tag:	Myc-DDK
ACCN:	NM_001099431
ORF Size:	588 bp
ORF Nucleotide Sequence:	The ORF insert of this clone is exactly the same as(RC217343).
OTI Disclaimer:	The molecular sequence of this clone aligns with the gene accession number as a point of reference only. However, individual transcript sequences of the same gene can differ through naturally occurring variations (e.g. polymorphisms), each with its own valid existence. This clone is substantially in agreement with the reference, but a complete review of all prevailing variants is recommended prior to use. More info
OTI Annotation:	This clone was engineered to express the complete ORF with an expression tag. Expression varies depending on the nature of the gene.
RefSeq:	NM_001099431.1 , NP_001092901.1
RefSeq Size:	883 bp
RefSeq ORF:	591 bp
Locus ID:	51266
UniProt ID:	Q9P126
Cytogenetics:	12p13.31-p13.2
Protein Families:	Druggable Genome, Transmembrane
MW:	22.9 kDa



[View online »](#)

Gene Summary:

Natural killer (NK) cells express multiple calcium-dependent (C-type) lectin-like receptors, such as CD94 (KLRD1; MIM 602894) and NKG2D (KLRC4; MIM 602893), that interact with major histocompatibility complex class I molecules and either inhibit or activate cytotoxicity and cytokine secretion. CLEC2 is a C-type lectin-like receptor expressed in myeloid cells and NK cells (Colonna et al., 2000 [PubMed 10671229]).[supplied by OMIM, Jan 2011]

Product images:

[RC217343L3] was used to prepare Lentiviral particles using [TR30037] packaging kit. HEK293T cells were transduced with RC217343L3V particle to overexpress human CLEC1B-Myc-DDK fusion protein.