

Product datasheet for RC217343

CLEC1B (NM_001099431) Human Tagged ORF Clone

Product data:

Product Type: Expression Plasmids
Product Name: CLEC1B (NM_001099431) Human Tagged ORF Clone
Tag: Myc-DDK
Symbol: CLEC1B
Synonyms: 1810061113Rik; CLEC2; CLEC2B; PRO1384; QDED721
Mammalian Cell Selection: Neomycin
Vector: pCMV6-Entry (PS100001)
E. coli Selection: Kanamycin (25 ug/mL)
ORF Nucleotide Sequence: >RC217343 representing NM_001099431
Red=Cloning site Blue=ORF Green=Tags(s)

TTTTGTAATACGACTCACTATAGGGCGGCCGGAATTCGTCGACTGGATCCGGTACCGAGGAGATCTGCC
GCC**CGATCGCC**

ATGCAGGATGAAGATGGATACATCACCTTAAATATTTAACTCGGAAACCAGCTCTCGTCTCCGCTGTCA
TGCAGCGCAATTACCTACAAGATGAGAATGAAAATCGCACAGGAAGCTCGCAACAATTAGCAAAGCGCTT
CTGTCAATATGTGGTAAAACAATCAGAATAAAGGGCACTTTCAAAGTGCATAAATGCAGCCCCTGTGAC
ACAAACTGGAGATATTATGGAGATAGCTGCTATGGTTCCTCAGGCACAACCTAACATGGGAAGAGAGTA
AGCAGTACTGCACTGACATGAATGCTACTCTCCTGAAGATTGACAACCGAACATTGTGGAGTACATCAA
AGCCAGGACTCATTTAATTCGTTGGGTCGGATTATCTCGCCAGAAGTGAATGAGGTCTGGAAGTGGGAG
GATGGCTCGGTTATCTCAGAAAATATGTTTGGTGGTGGTGGTGGTGGTGGTGGTGGTGGTGGTGGTGGT
ATTTTCATAATGGGAAAATGCACCCTACCTTCTGTGAGAACAAACATTATTTAATGTGTGAGAGGAAGGC
TGGCATGACCAAGGTGGACCAACTACT

ACGCGTACGCGGCCGCTCGAGCAGAACTCATCTCAGAAGAGGATCTGGCAGCAATGATATCCTGGATT
ACAAGGATGACGACGATAAGGTTTAA

Protein Sequence: >RC217343 representing NM_001099431
Red=Cloning site Green=Tags(s)

MQDEDGYITLNIKTRKPALVSAVMQRNYLQDENENRTGLQQLAKRFCQYVVKQSELKGTGFKGHCSPCD
TNWRYYGDSYGFRRHNLTWEEKQYCTDMNATLLKIDNRNIVEYIKARTHLIRWVGLSRQKSNEVVKWE
DGSVISENMFLEDDGKGNMNCAYFHNGKMHPTFCENKHLYLMCERKAGMTKVDQLP

TRTRPLEQKLISEEDLAANDILDYKDDDDKV



Chromatograms: https://cdn.origene.com/chromatograms/ja1454_e07.zip

Restriction Sites: SgfI-MluI

Cloning Scheme:



ACCN: NM_001099431

ORF Size: 588 bp

OTI Disclaimer: The molecular sequence of this clone aligns with the gene accession number as a point of reference only. However, individual transcript sequences of the same gene can differ through naturally occurring variations (e.g. polymorphisms), each with its own valid existence. This clone is substantially in agreement with the reference, but a complete review of all prevailing variants is recommended prior to use. [More info](#)

OTI Annotation: This clone was engineered to express the complete ORF with an expression tag. Expression varies depending on the nature of the gene.

Components: The ORF clone is ion-exchange column purified and shipped in a 2D barcoded Matrix tube containing 10ug of transfection-ready, dried plasmid DNA (reconstitute with 100 ul of water).

Reconstitution Method:

1. Centrifuge at 5,000xg for 5min.
2. Carefully open the tube and add 100ul of sterile water to dissolve the DNA.
3. Close the tube and incubate for 10 minutes at room temperature.
4. Briefly vortex the tube and then do a quick spin (less than 5000xg) to concentrate the liquid at the bottom.
5. Store the suspended plasmid at -20°C. The DNA is stable for at least one year from date of shipping when stored at -20°C.

RefSeq: [NM_001099431.1](#), [NP_001092901.1](#)

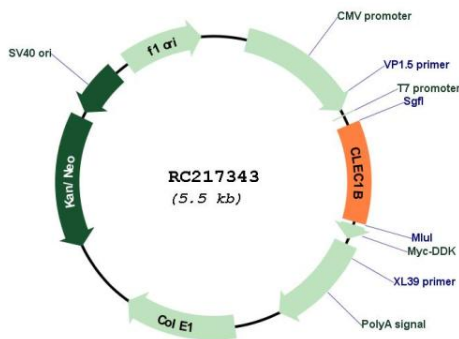
RefSeq Size: 883 bp

RefSeq ORF: 591 bp

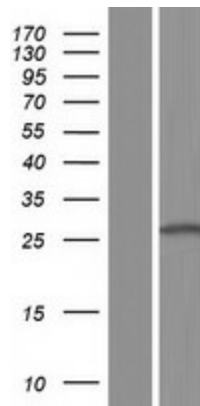
Locus ID: 51266

UniProt ID: [Q9P126](#)
Cytogenetics: 12p13.31-p13.2
Protein Families: Druggable Genome, Transmembrane
MW: 22.9 kDa
Gene Summary: Natural killer (NK) cells express multiple calcium-dependent (C-type) lectin-like receptors, such as CD94 (KLRD1; MIM 602894) and NKG2D (KLRC4; MIM 602893), that interact with major histocompatibility complex class I molecules and either inhibit or activate cytotoxicity and cytokine secretion. CLEC2 is a C-type lectin-like receptor expressed in myeloid cells and NK cells (Colonna et al., 2000 [PubMed 10671229]).[supplied by OMIM, Jan 2011]

Product images:



Circular map for RC217343



Western blot validation of overexpression lysate (Cat# [LY420453]) using anti-DDK antibody (Cat# [TA50011-100]). Left: Cell lysates from untransfected HEK293T cells; Right: Cell lysates from HEK293T cells transfected with RC217343 using transfection reagent MegaTran 2.0 (Cat# [TT210002]).