

## Product datasheet for RC217339

### SLX4 (NM\_032444) Human Tagged ORF Clone

#### Product data:

**Product Type:** Expression Plasmids  
**Product Name:** SLX4 (NM\_032444) Human Tagged ORF Clone  
**Tag:** Myc-DDK  
**Symbol:** SLX4  
**Synonyms:** BTBD12; FANCP; MUS312  
**Mammalian Cell Selection:** Neomycin  
**Vector:** pCMV6-Entry (PS100001)  
**E. coli Selection:** Kanamycin (25 ug/mL)  
**ORF Nucleotide Sequence:** >RC217339 representing NM\_032444  
 Red=Cloning site Blue=ORF Green=Tags(s)

TTTTGTAATACGACTCACTATAGGGCGGCCGGAATTCGTCGACTGGATCCGGTACCGAGGAGATCTGCC  
 GCC**CGATCGCC**

ATGAAACTGAGTGTGAATGAGGCTCAGCTAGGCTTCTACTTGGGTTCACTTTCTCATCTGTCTGCCTGTC  
 CTGGGATTGACCCTCGCTCCTCTGAAGACCAGCCTGAAAGCCTTAAAACCTGGTCAGATGATGGATGAGTC  
 TGATGAGGACTTTAAAGAACTCTGCGCTAGCTTTTCCAAAGGGTGAAAAACATGGAATCAAGGAAGTG  
 TCAGGAGAAAGGAAGACACAAAAGGCTGCCTCAAACGGCACTCAGATAAGAAGCAAATTGAAAAGGACCA  
 AACAACTGCTACCAAGACCAAAACCTTCAAGGCCCTGCAGAGAAGAAACCTCCGTCTGGCAGCCAGGC  
 CCCTAGGACTAAAAGCAAAGGGTAACCAAATGGCAAGCAAGTGAACCGGCCACTCTGTGAATGGGGAG  
 GGGGGTGTGCTTGCCTCTGCTCCAGATCCACCTGTGCTCCGGGAAACAGCACAAAACACCCAGACGGGTA  
 ACCAGCAAGAACCATCGCCAAACCTTTCCAGAGAGAAAACAGAGAGAATGTGCCAACAGCGACTCCCA  
 GCCTCCTCCTTCTGTTGACAACAGCAGTGCCAAGTCCCTCAAACCCCGCACAGCACAAATTGGTCCTA  
 CAGCGAATGCAGCAGTTCAAGAGAGCAGACCCCGAGCGTTTGAGACACGCTTCAAGAGAGTGCTCCCTCG  
 AGGCTGCGCGGGAAGAAAATGTCCAAAGGATCCTCAAGAGGAGATGATGGCGGGAATGTGTATGGGCT  
 TGGGCCCTGCCAGAGAGCAGCGCTGCGGTGGCCTGACCCCTGCAGCAGGAGTTTGCACGGTAGGA  
 GCATCGGCACATGATGATAGCTGGAGGAAAAGGTTTGTCTTCTGCCAGATTTGTCAAAGAACCTCT  
 CAGCCATGAACGTGACCCGAAGGGAACAGCATGTGAACAGGTGCTTGATGAAGCTGAAAAGACACTAAG  
 ACCTTCTGTGCCTCAGATCCCTGAGTGCCGATTTGTGGGAAACCGTTTCTTACCTTAAAGAGCAGAACC  
 AGTCACCTGAAGCAGTGTGCTGTGAAGATGGAGTTGGCCCCAGCTCCTGCTTCAGGCTGTGCGGCTGC  
 AGACAGCACAGCCTGAGGGTAGCAGCAGCCACCCATGTTAGCTTCAAGTATCAGAGTAGAGGTCTGAA  
 ACGGAGAGGACCCACAGCAAGAAGGAGCCACGGAAGAGGCGGAAGGTGGACGAGGCACCGTCCGAGGAC  
 CTGCTGGTGGCCATGGCTCTGTCCCGTTCGAGATGGAGCCGGTTCGGGCTGTACCAGCGCTCAGGCTGG  
 AAAGTGCCTTTCTGAGAGGATAAGACCAGAAGCAGAGAATAAAAGTCGCAAGAAGAAACCCCGGTATC  
 CCCCCATTGTTGTTAGTCCAGGACTCTGAAACCACAGCCGACAGATAGAGGACCGTGTGCCCTGCTC



CTCTCTGAGGAAGTGAATTGTCTAGCACGCCACCACTTCTGCCAGCAGGATTTAAAGGAAGGGTGGG  
 AAAGAGCGGGCCAGTGTCTCTCCACCTGAACGCAAGCAGAGCTTTCTGTGGGAGGGCAGCGCACTGAC  
 TGGGGCCTGGGCCATGGAGGACTTCTACACGGCCAGGCTGGTCCCTCCTCTCGTGCCCCAGCGCCCTGCC  
 CAGGGCCTTATGCAGGAGCCCGTGCCGCTCTGGTGCCACCTGAGCACTCAGAGCTGAGCGAGCGAAAGT  
 CACCCGCTCTCCACGGCACCCCACTGCAGGCTGTGGCTCCAGGGGCCGTCGCCTTCGCCAGCCAGAG  
 GGAGCACCAGGCCCTGCAGGACCTCGTGGACCTGGCGAGGGAGGACTGAGCGCCAGCCCGTGGCCCGGC  
 AGTGGGGCCTGGCTGGCTCGGAAGGGACTGCAGGGTTGGACGTGGTGCCCGCGCCCTTCTCTGACTG  
 GGTTTGTGGTGCCATCGCAGGACAAGCACCCGGACAGGGCGGCCGACCTTGCTCTCCCTCGGGCTGCT  
 GGTGCTGACTTTGGCGCCATGGTCAATAACCCACACCTGAGTGATGTCCAGTTTCAGACGGACAGCGGG  
 GAGGTGCTTTACGCCACAAGTTCGTGCTTTATGCCCGATGCCCGCTCCTCATCCAGTATGTGAACAATG  
 AAGGCTTCTCCGCTGTAGAGGACGGGTTCTGACCCAGCGTGTCTGCTGGGTGACGTGAGCACCAGGGC  
 CGCCCGCACGTTCTGCACTATCTTACACTGCGGACACTGGCCTTCTCCTGSCCTTAGCTCTGAGCTG  
 AGCTCCCTGGCCACAGGTTTGGCGTGAGTGAGCTCGTTCACCTGTGCGAACAGGTGCCTATTGCCACTG  
 ACTCAGAGGGCAAACCATGGGAGGAGAAGGAAGCAGAGAATTGCGAAAGCAGGGCCGAGAATTTCCAGGA  
 ACTCTTGAGGTCAATGTGGGCAGATGAAGAGGAGGAAGCGGAGACTTTGTTGAAATCCAAGGACCAGAA  
 GAAGATCAAGAAAACGTGAATGAAGCAGAAATGGAAGAAATTTATGAATTTGCAGCTACTCAGCGAAAGC  
 TTCTCCAGGAAGAAAGGGCAGCGGGTGC CGGCGAGGACGCTGACTGGCTGGAGGGTGGCAGTCCGGTTTC  
 TGGGCACTCCTAGCAGGTGTCCAGGTGCAGAAACAGTGGGACAAGTGGAGGAGATGGAGCCGTTGGAG  
 CCAGGAAGAGATGAGGCCGCCACCACCTGGGAGAAGATGGGACAGTGCCTCTCCCGCCACCCAGGGCC  
 AGCACTCAGGGGCACGGGGAGCAGAGGCCCTGAGCAGGAGGCGCCAGAGGAGGCGCTTGGCCATTCCAG  
 CTGCTCCAGCCCTTCCAGGGACTGCCAGGCAGAGAGAAAAGAAGGCTCTTCCGCACTCAGATGATGCC  
 GGGGATTACGAACAGCTTCTCATCACTCAGGGAGAGATCTCAGAGCCGTCCAAATAACAAGTGAGC  
 CCGAGGAAACAAAGTGGCGTGTGAGGAAAGGGGCTGGAGTTTCTCATCGCTGGCTCCCTGGCAGGC  
 ATCTCCACCGCACCCGTGCCGTTCTATTGGGGCTCCCGAGGGCGGGAGTCCCGCGGGTCTCATCAC  
 ACAAGTGGGTGCTCCCTGTCAACACCCCGTCCCGTGGCGGAACCTCCAGGTGGGCTCCCAACCTTGC  
 TGTCTCCAGTGTGCCATCAAAGCAGAAAAGGGACAGGAGCATCCTCACGCTGTCTAAAGAGCCAGGGCA  
 CCAGAAAGGCAAAGAGCGTCGGTCCGTGCTGGAGTGCAGAAATAAGGGGGTCTGATGTTCCAGAAAAA  
 TCTCCGCTATTGACCTAACCCAGTCAAATCCTGACCATTCGAGCTCCAGATCTCAGAAATCTTATCCA  
 AACTGAACGAAGAAGATGAGGTCACTCTTACTGGACTCGGATGAGGAGCTGGAGCTAGAACAACCAA  
 AATGAAGTCCATTTCTAGTGATCCTCTGGAAGAAAAGAAAGCTCTAGAAATTAGCCCTAGGTCTGTGAG  
 CTGTTTTCCATCATTGATGTTGATGCAGATCAGGAACCTTCCAGAGCCCAAGAAGCGAAGCTGTGC  
 TGACAGCAGGAGGATGAGGGGGCGCTGCCGAGAAATCGGGGCTCTTGGGCAGGAGAGGGGCTCCCTGGCT  
 GTTCTGTGACCGTGAGAGCAGCCCCAGCGAGGCCAGCACACAGACACCTCGTGGCTGGTGGCCGCCACC  
 CCGCTGGCCAGCAGAAGCCGTGACTGTTCTTCCAGACCCAAATCAGCAGCCTCAGGAGCGGGTGGCCG  
 TGCAGGGCGTGACTCAGCACACGCCCAGGGCCTCAGTAGGAAACAGGGAAGGGAACGAAGTCGCACAGAA  
 GTTTTCTGTATCAGGCCCCAGACACCACCGCCCAGACACCGTCTCATGCCTCACTCCCGTCTCTCCA  
 GGAATTTCTGACGGCAGAAGGCAAGGCCACAGAAGCCCTCCCGTCCCCACCCCGGGGCCACCCGCACT  
 CCTCTCCGCTGGCTCCACATCCATCTCAGGGGACCGCGCCACTTCAGCAGGCGGTTCTGAAACTC  
 CGCGCTGGGCCAAGCTTCTGAACCAGACCCAGCGGGTGAAGTGGTGAAGTCGAGACAGTGCAGATGACG  
 GAGCAGGAGGTGGCCTCCATCAGGCCAACAGAAGCCCCCACTGGACAGTGAACCCCAATTCCAATTG  
 ACGACTGCTGCTGGCACATGGAGCCCTCTCGCCAATTCCATTGACCACTGGAACCTGGAGCGGACCGG  
 CCCCCTGAGCACCAGCAGCCCCAGCCGAGGATGAACGAGGCCGCGACAGCCGTGACTGTGCTCCCCG  
 GGACTCCTGGACACCACCCCAATCCGAGGAAGTGCACCTACCCAGAGGAAATGCAAGAGAAGTCTCGG  
 GCGCGGGTCCCTGGGGAATAGCAGGCCGAGCTTTCTGAATTCGGCTCTGTGGGACGTTTGGGACGGGA  
 AGAGCAGAGGCCCTCCAGAGACCCCTCCTCCGGCCAGATGCCAAGCGCTGGTGGAGCTCAGAAGCCCGAA  
 GGGTTAGAGACACCCAAAGGTGCTAATCGGAAGAAGAAGTGGCCCCAAAGTGGCCATAACGCCGATGC  
 CACAGTATTCATTATGGAGACCGCGTGTGAAGAAGGAAGTGGATAGGTTTGGAGTCCGCCCTCTGCC  
 TAAACGCCAGATGGTTCTGAAGCTGAAGGAGATATTCCAGTACACTCACCAGACCCCTGGACTCAGACTCC  
 GAGGACGAGAGCCAGTCTCACAGCCGCTGTTGCAGGGCCTCACTGCCAGACCTCGCCTCCCAGACCT  
 ACAAGCCTTCAAGGGCAGGGGTCCATGCCAGCAGGAGGCCACCACAGGACCTGGGGCCCATAGGCCCAA  
 GGGACCTGCTAAGACCAAGGGCCCCGACATCAAAGGAAGCATCATGAAAGCATCACACCCCAAGCAGG  
 TCGCCCAAGGAGGCACCTCCAGGCCAATGATGACGCCAGATCCCAGCCTCTCAAGAATCCGTGG

CCACCTCTGTGGATGGCAGTGACAGCTCCTTGAGCTCACAGAGTTCTTCCTCCTGTGAGTTGGAGCGGC  
 ATTTGAGTCTGCAGGTGAAGAGGAGGGCGAGGGGGAGGTCAAGTGCCTCGCAGGCAGCCGTGCAGGCGGCG  
 GACACAGACGAGGCGCTGAGGTGCTACATCCGCTCCAAGCCGGCCCTGTACCAGAAGGTGCTGTACC  
 AGCCCTTTGAGCTGCGGGAGCTGCAGGCAGAGCTGAGGCAGAACGGCCTCCGTGTCTCGCGCAGGCT  
 GTTGGACTTCTGGACACCCACTGTATCACCTTACCAGTCCCGCCACCCGAGGAGAAGCTCCAGGGC  
 AGGAGGCGGCAGCCTCGGGCAAGAAGAAGGTGGAGCGGAAC

ACGCGTACGCGGCCGCTCGAGCAGAACTCATCTCAGAAGAGGATCTGGCAGCAAATGATATCCTGGATT  
 ACAAGGATGACGACGATAAGGTTTAA

**Protein Sequence:**

>RC217339 representing NM\_032444  
 Red=Cloning site Green=Tags(s)

MKLSVNEAQLGFYLGSLSHLSACPGIDPRSSDQPELKTGQMMDESDDFKELCASFFQRVKKHGIKEV  
 SGERKTQKAASNGTQIRSKLKRKTQTATKTKTLQGPAAEKPPSGSQAPRTKKQRVTKWQASEPAHSVNGE  
 GGVLASAPDPPVLRETAQNTQTGNQPEPSPNLSREKTRENVNPSDSQPPPSCLTTAVPSPSKPRTAQLVL  
 QRMQQFKRADPERLRHASEECSLEAAREENVKDPQEEEMAGNVYGLGPPAPESDAVAVALTLQQEFARVG  
 ASAHDDSLLEEKGLFFCQICQKNLSAMNVTREQHVNRCLDEAEKTLRPSVPIPECPICGKPFLLTKSRT  
 SHLKQCAVKMEVGPQLLLQAVRLQTAQPEGSSPPMFSFSDHSRGLKRRGPTSKKEPRKRRKRVDEAPSED  
 LLVAMALSRSEMEPGAAPALRLESASFSEIRPEAENKSRKKKPPVSPLLLVDQSETTRGRQIEDRVALL  
 LSEEVLSSTPPLPASRILKEGWERAGQCPPPERKQSFLWEGSALTGAWAMEDFYARLVPLVPQRP  
 QGLMQEPVPLVPPEHSELSERRSPALHGTPTAGCGSRGSPSASQREHQAQLVDLAREGLSASPWPG  
 SGGLAGSEG TAGLDVVPGLPLTGFVVPVSDKHDPDRGRTLLSLGLLVADFGAMVNNPHLSDVQFQTDSDG  
 EVLYAHKFVLYARCPILLIQYVNNEGFSAVEDGVLTRQVLLGDVSTEAARTFLHYLYTADTGLPPGLSSEL  
 SSLAHRFGVSELVHLCEQVPIATDSEGKPEEKEAENCESRAENFQELLRSMWADEEEEAETLLKSKDHE  
 EDQENVNEAEMEEIYEF AATQRKLLQEERAAGAGEDADWLEGGSPVSGQLLAGVQVQKQWDKVEEMEPL  
 PGRDEAATTWEKMGQCALPPPQGHSGARGAEAPEQEAPEEALGHSSCSSPSRDCAERKEGSLPHSDDA  
 GDYEQLFSSQTQGEISEPSQITSEPEEQSGAVRERGLEVSHRLAPWQASPPHPCRFLLGPPQGGSPRGSHH  
 TSGSSLTPRSRGGTSQVGSPTLLSPAVPSKQKRDRSILTLKPEGHQKQKERRSVLECRNKGVLMPFEK  
 SPSIDL TQSNPDHSSRSQKSSSKLNEEDEVI LLLDSDDELELEQTMMKSISSDPLEEKKALEI SPRSCE  
 LFSIIDVDADQEPSQSPPRSEAVLQDEEGALPENRGS LGRRGAPWLFCDRESSPSEASTTDT SWLV PAT  
 PLASRSRDCSSQTQISSLRSGLA VQAVTQHTPRASVGNREGNEVAQKFSVIRPQT PPPQTPSSCLTPVSP  
 GTSDGRRRQGHRSRPHPGGHPHSSPLAPHPISGDRAHF SRRFLKHSPGPFSLNQT PAGEVVEVGDSDD  
 EQEVASHQANRSPPLDSDPPIIDDCCWHMEPLSPIPIDHWNLERTGPLSTSSPSRRMNEAADS RDCRSP  
 GLLDTPPIRGSC TQRKLQEKSSGAGSLGNSRPSFLNSALWDVWDGEEQRPPETPPPAQMP SAGGAQKPE  
 GLETPKGANRKKNLPPKVPITPMPQYSIMETPV LKKELDRFGVRPLPKRQMV LKLEIFQYTHQTLDSDS  
 EDESQSSQPLLQAPHCQTLASQTYKPSRAGVHAQQEATTGPGAHRPKGPAKTKGPRHQKHHESITPPSR  
 SPTKEAPPGLNDDAQIPASQESVATSVDGSDSSLSSQSSSSCEFGAAFESAGEEEGEV SASQA AVQAA  
 DTDEALRCYIRSKPALYQKVLLYQPFELRELQAE LRQNGLRVSSRRLDFLDTHCITFTTAA TRREKLQ  
 RRRQRPRGKKKVERN

TRTRPLEQKLI SEEDLAANDILDYKDDDDKV

**Chromatograms:**

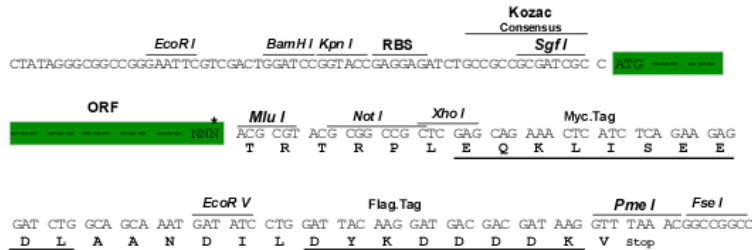
[https://cdn.origene.com/chromatograms/mk8015\\_d05.zip](https://cdn.origene.com/chromatograms/mk8015_d05.zip)

**Restriction Sites:**

Sgfl-Mlul

**Cloning Scheme:**

Cloning sites used for ORF Shuttling:



\* The last codon before the Stop codon of the ORF

**ACCN:** NM\_032444

**ORF Size:** 5502 bp

**OTI Disclaimer:** The molecular sequence of this clone aligns with the gene accession number as a point of reference only. However, individual transcript sequences of the same gene can differ through naturally occurring variations (e.g. polymorphisms), each with its own valid existence. This clone is substantially in agreement with the reference, but a complete review of all prevailing variants is recommended prior to use. [More info](#)
**OTI Annotation:** This clone was engineered to express the complete ORF with an expression tag. Expression varies depending on the nature of the gene.

**Components:** The ORF clone is ion-exchange column purified and shipped in a 2D barcoded Matrix tube containing 10ug of transfection-ready, dried plasmid DNA (reconstitute with 100 ul of water).

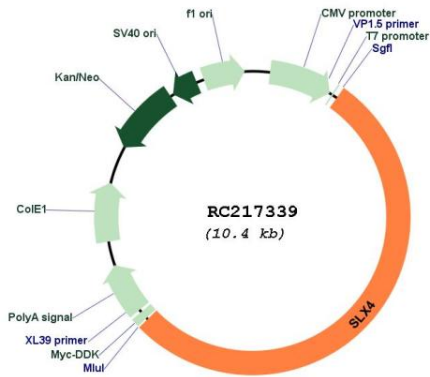
**Reconstitution Method:**

1. Centrifuge at 5,000xg for 5min.
2. Carefully open the tube and add 100ul of sterile water to dissolve the DNA.
3. Close the tube and incubate for 10 minutes at room temperature.
4. Briefly vortex the tube and then do a quick spin (less than 5000xg) to concentrate the liquid at the bottom.
5. Store the suspended plasmid at -20°C. The DNA is stable for at least one year from date of shipping when stored at -20°C.

RefSeq: [NM\\_032444.4](#)  
 RefSeq Size: 7304 bp  
 RefSeq ORF: 5505 bp  
 Locus ID: 84464  
 UniProt ID: [Q8IY92](#)  
 Cytogenetics: 16p13.3  
 MW: 199.8 kDa

**Gene Summary:** This gene encodes a protein that functions as an assembly component of multiple structure-specific endonucleases. These endonuclease complexes are required for repair of specific types of DNA lesions and critical for cellular responses to replication fork failure. Mutations in this gene were found in patients with Fanconi anemia. [provided by RefSeq, Sep 2016]

**Product images:**



Circular map for RC217339