

Product datasheet for RC217334

BRD1 (NM_014577) Human Tagged ORF Clone

Product data:

Product Type:	Expression Plasmids
Product Name:	BRD1 (NM_014577) Human Tagged ORF Clone
Tag:	Myc-DDK
Symbol:	BRD1
Synonyms:	BRL; BRPF1; BRPF2
Mammalian Cell Selection:	Neomycin
Vector:	pCMV6-Entry (PS100001)
E. coli Selection:	Kanamycin (25 ug/mL)
ORF Nucleotide Sequence:	>RC217334 representing NM_014577 Red=Cloning site Blue=ORF Green=Tags(s)

TTTTGTAATACGACTCACTATAGGGCGGCCGGAATTCGTCGACTGGATCCGGTACCGAGGAGATCTGCC
GCC**CGATCGCC**

ATGAGGAGGAAAGGACGATGTCATCGAGGCTCTGCAGCGAGGCATCCTTCTTCCCATGCAGTGTTAAAC
ACTCCCCTACGCGAGAAACGCTGACCTACGCTCAAGCTCAAAGGATGGTAGAGATAGAAATTGAAGGGCG
CTTGCACAGGATCAGTATTTTTGATCCCCTGGAGATCATATTGGAAGATGACCTCACTGCTCAAGAGATG
AGTGAGTGCAACAGCAACAAGGAAAACAGCGAGCGGCCCTCCTGTCTGCTTAAGAATAAGCGTCACAAAA
ACAACAGAGTCAAAAAGAAAACGAGGCCCTCCCAGCGCCACGCGCACGCCGGCCTCGGCCAGTGCCCT
CCCGGAGCCCAAGGTGCGCATCGTGGAGTACAGCCCTCCGTCCGCCCCAGGAGGCTCCTGTGTACTAC
AAGTTCATCGAGAAGTCGGCCGAGGAAGTGGACAACGAGGTGGAGTATGACATGGACGAGGAGGACTATG
CCTGGCTGGAGATCGTCAATGAGAAGCGCAAGGGCGACTGCGTCCCCGCCGTGTCGAGAGCATGTTTGA
GTTCTGATGGACCGCTTCGAGAAGGAGTGCAGTGCAGAAACCAGAAGCAGGGCGAGCAGCAGTCTCTG
ATCGACGAGGACGCCGTGTGCTGCATCTGCATGGACGGGGAGTGTGAGAACAGCAACGTGATCCTTCT
GCGACATGTGCAACCTGGCCGTGCACCAGGAGTGTACGGGTGCCCTACATCCCCGAGGGCCAGTGGCT
CTGCCGCCACTGCCTGCAGTCCGGGGCCCGCCCGCCACTGTGTGCTGTGCCCAACAAGGTTGGTGCC
TTCAAAAAGACAGATGACGACCCATCGATGGGGTGAGGAACATCCCTCCAGCCCGTGGAAACTGACATG
CCAACACGGTGTTCATCGAGCCCATCGATGGGGTGAGGAACATCCCTCCAGCCCGTGGAAACTGACATG
CTACCTCTGTAAGCAGAAGGGCGTGGGTGCCTGCATCCAGTGCCACAAAGCAAATGCTACACAGCATT
CATGTGACGTGTGCCAGAAGGCTGGCCTGTACATGAAAATGGAGCCCGTGAAGGAACTGACTGGCGGTG
GCACCACCTTCTCCGTGAGAAAGACCGCTTACTGTGATGTCCACAGCCTCCAGGCTGCACCCGGAGGCC
TCTGAATATTTACGGGATGTCGAAATGAAAAATGGCGTCTGTGAAAAGAGAGCTCGGTTAAAACGGTC
AGGTCCACATCCAAGGTGAGGAAGAAGGCAAAAAGGCTAAGAAAGCTCTGGCTGAGCCCTGCGCGGTCC
TGCCGACCGTGTGCGCTCCTTATATTCCCCCGCAGAGGTTAAATAGGATTGCGAATCAGGTGGCCATTCA
GCGGAAGAAGCAGTTTGTGGAGCGAGCCACAGCTACTGGCTGCTCAAGCGGCTGTCCAGGAACGGGGCC



```

CCCCCTGCTGCGGCGGCTGCAGTCCAGCCTGCAGTCTCAGCGAAGCTCACAGCAGAGAGAAAATGATGAGG
AGATGAAGGCTGCCAAAGAGAAGCTGAAGTACTGGCAGCGGCTGCGGCACGACCTGGAGCGCGCTCGCCT
GCTGATCGAGTCTGCGCAAGCGGGAGAAGCTCAAGCGTGAGCAGGTGAAGGTGGAGCAGGTCCGCATG
GAGCTGCGGCTGACCCCGCTGACGGTGTCTGCGCTCAGTGTGGACCAGTGAAGACAAGGACCCCG
CCAGGATATTTGCGCAGCCCGTGAAGTCTGAAGGAGTACCAGATTATTTGGATCACATTAACATCCCAT
GGACTTTGCCACAATGAGGAAACGGTTAGAAGCTCAAGGGTATAAAAACTCCATGAGTTTGAGGAGGAT
TTTGATCTATTATAGATAACTGCATGAAGTACAATGCCAGGGACACCGTGTCTATAGAGCCGCGGTGA
GGCTGCGCGATCAGGGAGGTGTTGTTCTGAGGACGGCCCGCGGAGGTGGACAGCATCGGCTTGAAGA
GGCCTCGGGGATGCACCTGCCTGAGCGGCTGCTGCGGCACCGCGGCGGCTTTCTCTGGGAAGACGTG
GACAGGTTGCTGGACCCCGCAACAGAGCCACCTGGGCTGGAGGAGCAGTGAAGAGCTGCTGGACA
TGCTCGACCTCACCTGCGCTATGAAGTCCAGCGGCTCCCGGAGCAAGCGGGCAAAGCTGCTAAAAAGGA
AATTGCCCTTCTCGAAACAAGCTGAGCCAGCAGCACAGCCAGCCCTGCCACGGGGCCAGGCTTGAA
GGCTTGAAGAGGACGGAGTGCCTGGGGCCGGAGGCGGGGAGGAAGTCTTCCGAGGTTGGAGACTC
TTCTGCAGCAAGGAAAGGTGCGGAGACATGCGGAGACTCCGAGGTGGAGGAGGAGTCCCAGGAAA
GCGCCTGGACGAGTCTACCAACGGCTTTGGGGTGCAGGAGCGAGCAGGAGCCGGGCGGCGGCTG
GGGAGGAAAGGCCACCCCGACGACGCTGTGCCTCCGAGTCCAGCATCTCTCCAGCAACAGCCCGCTCT
CGGACTCGAGCTTAATGCGCCAAATGTGGGCGGGGCAAACCGGCTCTTGTGCGACGGCACACGCTGGA
GGACCGCAGTGAAGTCTCTGCATCGAATGGGAACTACGCCAAGGCGGCCAGGATCGCAGCCGAA
GTCGGCCAGAGCAGCATGTGGATCTCCACTGATGCCGCGGCTCGGTGCTGGAGCCTCTGAAGGTGGTGT
GGGCCAAGTGCAGCGGCTACCCCTCTACCCGGCACTGATCATGACCCCAAGATGCCCGTGTGCCTGG
CCACCACAACGGCGTACCATCCCGGCCACCCCTGGACGTGCTGAAGATTGGGGAGCAGATGCAGACC
AAGTCTGATGAGAAGCTGTTCTCGTCTCTTTTTGATAATAAGAGAAGTTGGCAGTGGCTTCTAAGT
CCAAAATGGTTCCCTTGGTATTGACGAAACTATAGACAAGTTAAGATGATGGAAGGGAGGAATTCCAG
CATCCGGAAGGCGGTGCGGATCGTCTTTGACCGGCCATGAACCCTGAGCCGCGTCCACGGGGAGCCG
ACCAGCGACCTCAGTGACATTGAC
    
```

ACGCGTACGCGGCGGCTCGAGCAGAACTCATCTCAGAAGAGGATCTGGCAGCAATGATATCCTGGATT
ACAAGGATGACGACGATAAGGTTTAA

Protein Sequence:

>RC217334 representing NM_014577

Red=Cloning site Green=Tags(s)

```

MRRKGRCHRGSAAARHPSSPCSVKHSPTRRETLTYAQAQRMVEIEIEGRHLHRISIFDPLEIILEDLTAQEM
SECNSNKENSERPPVCLRTRKHKNRVRKKNKNEALPSAHGTPASASALPEPKVRIVEYSPPSAPRRPPVYY
KFIEKSAEELDNEVEYDMDEEDYAWLEIVNEKRKGDVPAVSQSMFEFLMDRFEKESHENCQKQGEQSL
IDEDAVCCICMDGECQNSNVILFCDMCNLAVHQECYGVPIPEGQWLCRHCLQSRARPADCVLCPNKGGA
FKKTDDDRWGHVVCALWIPEVGFANTVFIEPIDGVRNIPPARKWLCYLCQKQKGVGACIQCHKANCYTAF
HVTCAQKAGLYMKMEPVKELTGGGTTFSVRKTAAYCDVHTPPGCTRRPLNIYGDVEMKNGVCRKESVKT
RSTSKVRKKAKKAKKALAEPCAVLPTVCAPYIPQRLNRIANQVAIQRKKQFVERAHSYWLLKRLSRNGA
PLLRRLQSSLQSQRSSQRENDIEMKAAKEKLYWQRLRHDLERARLLIELLRKREKLRQEVKVEQVAM
ELRLTPLTVLLRSVLDQLQDKDPARIFAQPVSLKEVPDYLHDIKHPMDFATMRKRLEAQGYKNLHEFEED
FDLIIIDNCMKYNARDTVFYRAAVRLRDQGGVVLRQARREVDISIGLEEASGMHLPERPAAAPRRPFSWEDV
DRLLDPANRAHLGLEEQLELLDMLDLTCAMKSSGSRSKRALLKKEIALLRNKL SQHSQPLPTGPGLE
GFEEEDGAALGPEAGEEVLPRLETLLQPRKRSRSTCGDSEVEEESPGKRLDAGLTNGFGGARSEQEPGGGL
GRKATPRRRCASESSISSNSPLCDSSFNAPKCGRGKPALVRRHTLEDRESELISCIENGYAKAARIAAE
VGQSSMWISTDAAASVLEPLKVVWAKCSGYPSYPALIIDPKMPRVPGHHNGVTIPAPPLDVLKIGEHMQT
KSDEKLFVLFFDNKRSWQWLPKSKMVLPGIDETIDKLMMEGRNSSIRKAVRIAFDRAMNHL SRVHGEP
TSDLSDID
    
```

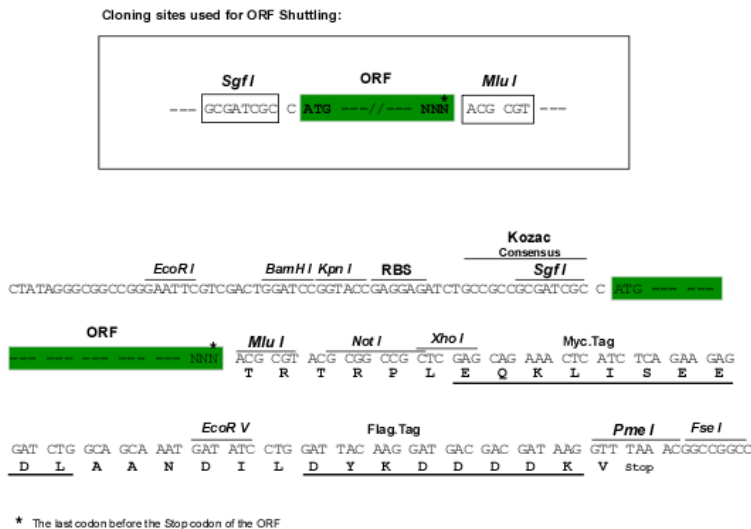
TRTRPLEQKLISEEDLAANDILDYKDDDDKV

Chromatograms:

https://cdn.origene.com/chromatograms/mg3362_e01.zip

Restriction Sites: SgfI-MluI

Cloning Scheme:



ACCN: NM_014577

ORF Size: 3174 bp

OTI Disclaimer: The molecular sequence of this clone aligns with the gene accession number as a point of reference only. However, individual transcript sequences of the same gene can differ through naturally occurring variations (e.g. polymorphisms), each with its own valid existence. This clone is substantially in agreement with the reference, but a complete review of all prevailing variants is recommended prior to use. [More info](#)

OTI Annotation: This clone was engineered to express the complete ORF with an expression tag. Expression varies depending on the nature of the gene.

Components: The ORF clone is ion-exchange column purified and shipped in a 2D barcoded Matrix tube containing 10ug of transfection-ready, dried plasmid DNA (reconstitute with 100 ul of water).

Reconstitution Method:

1. Centrifuge at 5,000xg for 5min.
2. Carefully open the tube and add 100ul of sterile water to dissolve the DNA.
3. Close the tube and incubate for 10 minutes at room temperature.
4. Briefly vortex the tube and then do a quick spin (less than 5000xg) to concentrate the liquid at the bottom.
5. Store the suspended plasmid at -20°C. The DNA is stable for at least one year from date of shipping when stored at -20°C.

RefSeq: [NM_014577.1](#), [NP_055392.1](#)

RefSeq Size: 4617 bp

RefSeq ORF: 3177 bp

Locus ID: 23774

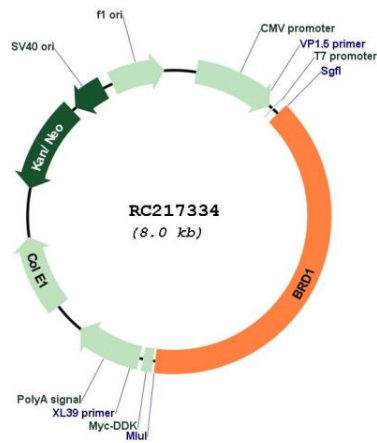
Cytogenetics: 22q13.33

Domains: PWWP, BROMO, PHD
Protein Families: Druggable Genome, Transcription Factors

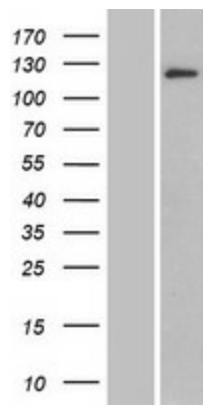
MW: 119.3 kDa

Gene Summary: This gene encodes a bromodomain-containing protein that localizes to the nucleus and can interact with DNA and histone tails. The encoded protein is a component of the MOZ/MORF acetyltransferase complex and can stimulate acetylation of histones H3 and H4, thereby potentially playing a role in gene activation. Variation in this gene is associated with schizophrenia and bipolar disorder in some study populations. Alternative splicing results in multiple transcript variants. [provided by RefSeq, Mar 2017]

Product images:



Circular map for RC217334



Western blot validation of overexpression lysate (Cat# [LY415196]) using anti-DDK antibody (Cat# [TA50011-100]). Left: Cell lysates from untransfected HEK293T cells; Right: Cell lysates from HEK293T cells transfected with RC217334 using transfection reagent MegaTran 2.0 (Cat# [TT210002]).