

Product datasheet for RC217329

TOMM20L (NM_207377) Human Tagged ORF Clone

Product data:

Product Type: Expression Plasmids
Product Name: TOMM20L (NM_207377) Human Tagged ORF Clone
Tag: Myc-DDK
Symbol: TOMM20L
Synonyms: UNQ9438
Mammalian Cell Selection: Neomycin
Vector: pCMV6-Entry (PS100001)
E. coli Selection: Kanamycin (25 ug/mL)
ORF Nucleotide Sequence: >RC217329 representing NM_207377.
Blue=ORF Red=Cloning site Green=Tag(s)

```
GCTCGTTTGTGAACCGTCAGAATTTGTAAACGACTACTATAGGGCGCCGGGAATTCGTCGACTG
GATCCGGTACCGAGGAGATCTGCCGCCGCGATCGCC
ATGCCCTCCGTCCTCCTCCGCCTCTTGCCGCCGCGGGCCTGTGGCGCTTCGCTTCTCTG
GGCTATTGTATTTACCTCAACCGGAAGCGCGGGGACCCCGCTTCAAGCGCCGCTGCGGGACAAA
AGAAGAGCAGAGCCTCAAAGGCTGAGGAGCAGGGCACGCAGTTGTGGGATCCAACGAAGAATAAAAAG
TTGCAAGAACTTTCTTGAAGAGGTACGGATGGGAGAAGTTGGTTATCTAGAGGAGAGCACAGAATG
GGGATTCAACACCTCGGCAATGCCCTTTAGTGTGCGAGCAACCACGGAACTTCTGAAAGTTTTCAA
CACACTCTCCCTCCAAGGTATTTGAGATGCTGTTGCACAAAATCCCTTATTTGCCAGCAATTTGAG
GCAGACATGAATGAACAGGACTGCTTGGAGGATGATCCTGAT
ACGCGTACGCGGCCGCTCGAGCAGAACTCATCTCAGAAGAGGATCTGGCAGCAAATGATATCCTGGAT
TACAAGGATGACGACGATAAGGTTAAACGGCCGGC
```

Protein Sequence: >Peptide sequence encoded by RC217329
Blue=ORF Red=Cloning site Green=Tag(s)

```
MPSVRSLLRLLAAAAACGAFALGYCIYLNRRRGDPAFKRRLRDKRRAEPQKAEEQGTQLWDPTKNKK
LQELFLQEVRMGELWLSRGEHRMGIQHLGNALLVCEQPRELLKVFKHTLPPKVFEMLLHKIPLICQQFE
ADMNEQDCLEDDPD
TRTRPLEQKLISEEDLAANDILDYKDDDDKV
```

Recombinant protein using RC217329 also available, [TP317329](#)

Chromatograms: https://cdn.origene.com/chromatograms/mk8014_c02.zip

Restriction Sites: Sgfl-Mlul



[View online >](#)

Cloning Scheme:


ACCN: NM_207377

ORF Size: 456 bp

OTI Disclaimer: The molecular sequence of this clone aligns with the gene accession number as a point of reference only. However, individual transcript sequences of the same gene can differ through naturally occurring variations (e.g. polymorphisms), each with its own valid existence. This clone is substantially in agreement with the reference, but a complete review of all prevailing variants is recommended prior to use. [More info](#)

OTI Annotation: This clone was engineered to express the complete ORF with an expression tag. Expression varies depending on the nature of the gene.

Components: The ORF clone is ion-exchange column purified and shipped in a 2D barcoded Matrix tube containing 10ug of transfection-ready, dried plasmid DNA (reconstitute with 100 ul of water).

Reconstitution Method:

1. Centrifuge at 5,000xg for 5min.
2. Carefully open the tube and add 100ul of sterile water to dissolve the DNA.
3. Close the tube and incubate for 10 minutes at room temperature.
4. Briefly vortex the tube and then do a quick spin (less than 5000xg) to concentrate the liquid at the bottom.
5. Store the suspended plasmid at -20°C. The DNA is stable for at least one year from date of shipping when stored at -20°C.

RefSeq: [NM_207377.3](#)

RefSeq Size: 622 bp

RefSeq ORF: 459 bp

Locus ID: 387990

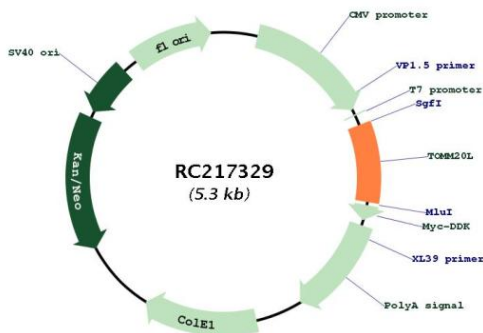
UniProt ID: [Q6UXN7](#)

Cytogenetics: 14q23.1

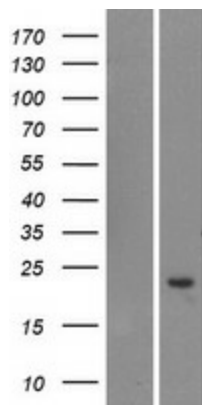
Protein Families: Druggable Genome, Transmembrane

MW: 17.7 kDa

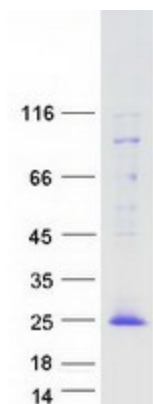
Product images:



Circular map for RC217329



Western blot validation of overexpression lysate (Cat# [LY403994]) using anti-DDK antibody (Cat# [TA50011-100]). Left: Cell lysates from untransfected HEK293T cells; Right: Cell lysates from HEK293T cells transfected with RC217329 using transfection reagent MegaTran 2.0 (Cat# [TT210002]).



Coomassie blue staining of purified TOMM20L protein (Cat# [TP317329]). The protein was produced from HEK293T cells transfected with TOMM20L cDNA clone (Cat# RC217329) using MegaTran 2.0 (Cat# [TT210002]).