

## Product datasheet for RC217326

### BARHL2 (NM\_020063) Human Tagged ORF Clone

#### Product data:

Product Type:	Expression Plasmids
Product Name:	BARHL2 (NM_020063) Human Tagged ORF Clone
Tag:	Myc-DDK
Symbol:	BARHL2
Mammalian Cell Selection:	Neomycin
Vector:	pCMV6-Entry (PS100001)
E. coli Selection:	Kanamycin (25 ug/mL)
ORF Nucleotide Sequence:	>RC217326 ORF sequence Red=Cloning site Blue=ORF Green=Tags(s)

TTTTGTAATACGACTCACTATAGGGCGGCCGGAATTCGTCGACTGGATCCGGTACCGAGGAGATCTGCC  
GCC**CGATCGCC**

ATGACAATGGAAGGGGCCAGCGGGTCGAGTTTTGGAATAGACACGATTTGTCCAGTGCCAGTTCAGGCA  
GCCCAGGCATGATGAATGGAGATTTCCGCCCGCTCGGTGAGGCCAGGACCGCGGATTTAGGAGTCAGGC  
CACCCCATCTCCCTGTTCCGAGATTGATACCGTAGGGACGGCGCCTTCTCTCTATCTCAGTCACCATG  
GAGCCCCGGAGCCGCATCTGGTAGCAGACGCGACCCAGCATCATACCACCTCCACCACAGCCAGCAGC  
CGCCGCCCGGGCCGCGCCCGCCGACGCAAAAGTTTGCAGCCTTTGCCCAACAGCAGCAGCCGCTGCCGCC  
ACAGCAGCCGCCCGCCGCCCGCCCGCCAGCAGCTGGGCTCGGCCGCTCGGCCCGCCAGGACTTCCAGTCT  
TCTTTTTTAATTAAGGACATCTTGGGCGACAGCAAACCTCTGGCGCATGTGCACCCTACAGCACCAGCG  
TATCCTCTCCCCACCACACCCCGAAGCAGGAGAGCAACGAGTGCACGAGGCTTCAGGCCAAAGCTCGA  
GCAGGAGGACAGCAAGACCAAACCTCGACAAGCGGGAGGATTTCCAGAGCGACATCAAATGCCACGGGACA  
AAGGAGGAAGGAGACCGGGAGATTACGAGTAGCCGTGAGAGTCCCCTGTGAGAGCCAAGAAGCCTCGAA  
AAGCAAGGACAGCTTTTTCCGACCACCAGCTCAATCAACTGGAGCGTAGCTTTGAGCGGCAGAAGTACCT  
GAGCGTGCAGGATCGCATGGACCTGGCTGCAGCGCTCAACCTCACTGACACCCAAGTCAAGACCTGGTAC  
CAGAACCAGGACCAAGTGGAAGCGGCAGACAGCGGTGGCCTGGAGTTGCTGGCCGAGGCAGGGAAGT  
ACTCGGGCTGCAGAGGATGTTTCCATCGCCTATTTCTATCACCAAGCCTGCTGGGCAGCATGGACAG  
CACTACGGCGGGCGGGCTGCCGCTGACAGCAGCATGTACCGGACTCCTCCAGCACCCCATCCC  
CAGCTGCAGCGGCCCTGGTGCCCGTGTGCTCATCCAGGCCTAGGGCCTGGGGACAGCCAGCCCTTA  
ATCCATTGTCCAGCCCCATCCCAGGCACCCACACCCCGG

**ACGCGT**ACGCGGCCGCTCGAGCAGAACTCATCTCAGAAGAGGATCTGGCAGCAAATGATATCCTGGATT  
ACAAGGATGACGACGATAAGGTTTAA



[View online »](#)

**Protein Sequence:** >RC217326 protein sequence  
Red=Cloning site Green=Tags(s)

MTMEGASGSSFGIDTILSSASSGSPGMMNGDFRPLGEARTADFRSQATPSPCSEIDTVGTAPSSPISVTM  
 EPPEPHLVADATQHHLHHSQQPPPPAAAPTQSLQPLPQQQPLPPQPPPPPPQQLGSAASAPRTSTS  
 SFLIKDILGDSKPLAACAPYSTSVSSPHHTPKQESNAVHESFRPKLEQEDSKTKLDKREDSQSDIKCHGT  
 KEEGDREITSSRESPPVRAKKPRKARTAFSDHQLNQLERSFERQKYL SVQDRMDLAAALNL TDTQVKTWY  
 QNRRTKWKRTAVGLELLAEAGNYSALQRMFSPYFYHPSLLGSMSTTAAAAAAAMYSMYRTPPAPHP  
 QLQRPLVPRVLIHGLGPGGQPALNPLSSIPGTPHPR

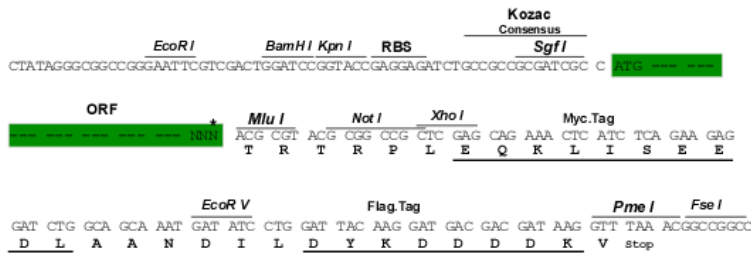
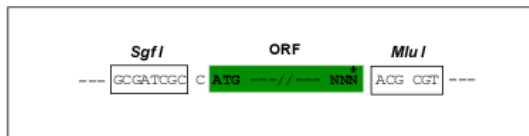
TRTRPLEQKLISEEDLAANDILDYKDDDDKV

**Chromatograms:** [https://cdn.origene.com/chromatograms/mk6467\\_a05.zip](https://cdn.origene.com/chromatograms/mk6467_a05.zip)

**Restriction Sites:** SgfI-MluI

**Cloning Scheme:**

Cloning sites used for ORF Shuttling:



\* The last codon before the Stop codon of the ORF

**ACCN:** NM\_020063

**ORF Size:** 1161 bp

**OTI Disclaimer:** The molecular sequence of this clone aligns with the gene accession number as a point of reference only. However, individual transcript sequences of the same gene can differ through naturally occurring variations (e.g. polymorphisms), each with its own valid existence. This clone is substantially in agreement with the reference, but a complete review of all prevailing variants is recommended prior to use. [More info](#)

**OTI Annotation:** This clone was engineered to express the complete ORF with an expression tag. Expression varies depending on the nature of the gene.

**Components:** The ORF clone is ion-exchange column purified and shipped in a 2D barcoded Matrix tube containing 10ug of transfection-ready, dried plasmid DNA (reconstitute with 100 ul of water).

**Reconstitution Method:**

1. Centrifuge at 5,000xg for 5min.
2. Carefully open the tube and add 100ul of sterile water to dissolve the DNA.
3. Close the tube and incubate for 10 minutes at room temperature.
4. Briefly vortex the tube and then do a quick spin (less than 5000xg) to concentrate the liquid at the bottom.
5. Store the suspended plasmid at -20°C. The DNA is stable for at least one year from date of shipping when stored at -20°C.

**Note:** Plasmids are not sterile. For experiments where strict sterility is required, filtration with 0.22um filter is required.

**RefSeq:** [NM\\_020063.2](#)

**RefSeq Size:** 1496 bp

**RefSeq ORF:** 1164 bp

**Locus ID:** 343472

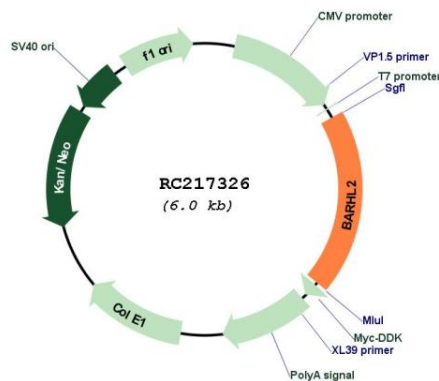
**UniProt ID:** [Q9NY43](#)

**Cytogenetics:** 1p22.2

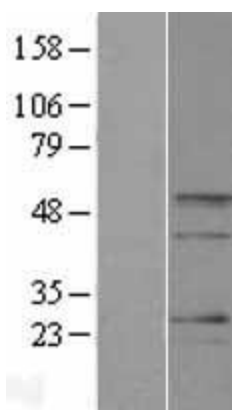
**MW:** 42 kDa

**Gene Summary:** Potential regulator of neural basic helix-loop-helix genes.[UniProtKB/Swiss-Prot Function]

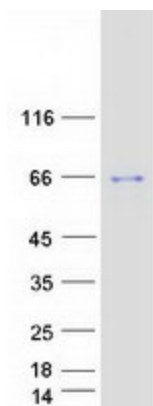
### Product images:



Circular map for RC217326



Western blot validation of overexpression lysate (Cat# [LY412652]) using anti-DDK antibody (Cat# [TA50011-100]). Left: Cell lysates from untransfected HEK293T cells; Right: Cell lysates from HEK293T cells transfected with RC217326 using transfection reagent MegaTran 2.0 (Cat# [TT210002]).



Coomassie blue staining of purified BARHL2 protein (Cat# [TP317326]). The protein was produced from HEK293T cells transfected with BARHL2 cDNA clone (Cat# RC217326) using MegaTran 2.0 (Cat# [TT210002]).