

Product datasheet for **RC217321**

DTX4 (NM_015177) Human Tagged ORF Clone

Product data:

Product Type:	Expression Plasmids
Product Name:	DTX4 (NM_015177) Human Tagged ORF Clone
Tag:	Myc-DDK
Symbol:	DTX4
Synonyms:	RNF155
Mammalian Cell Selection:	Neomycin
Vector:	pCMV6-Entry (PS100001)
E. coli Selection:	Kanamycin (25 ug/mL)



[View online »](#)

ORF Nucleotide Sequence:

>RC217321 representing NM_015177
 Red=Cloning site Blue=ORF Green=Tags(s)

TTTTGTAATACGACTCACTATAGGGCGGCCGGGAATTCGTCGACTGGATCCGGTACCGAGGAGATCTGCC
 GCC**CGGATCGCC**

ATGCTCCTGGCCTCGGCCGTGGTGGTCTGGGAATGGCTGAACGAGCACGGCCGCTGGCGTCCCTACAGCC
 CAGCGGTGAGCCACCACATCGAGGCGGTGGTCCGCGCCGCCCGCCGCGGGGGGACGCGTGGTGCCTGGG
 CCAGGTGGACAGCCGTCTCGGCCCTACATCATCGACCTGCAGTCCATGAACCAGTTCGCCCAAGACACG
 GGAAGTCTCCGCCAGTTCGCGCAACTACTACGACCCCTCCTCGGCCCTGGGAAGGGCGTGGTGTGGG
 AGTGGGAGAACGACAATGGCTCCTGGACGCCCTACGACATGGAAGTGGGCATCACCATCCAGCATGCCTA
 TGAGAAGCAGCACCCCTGGATCGACCTCACTTCCATTGGCTTTAGCTACGTAATTGACTTCAACACCATG
 GGCCAGATCAACCGTCAGACCCAGCGCCAACGCCGCGTCCGCCGGCGCTCGACCTCATCTACCCCATGG
 TCACAGGGACCTTGCCCTAAGGCTCAGTCTGGCCAGTCAGCCCTGGGCCAGCCACCTCGCCCCCATGTC
 CCCCTGCTCCTGTCCCCAGTGTGTCTTGGTGATGAGTGTAAAGGACGCCGTGGTCAATGGCAGCACTGGG
 CCCTACAGTGGCAGTACCCGCAAGAACATGCCGCTCCTGGAGTGGTCAAGTACCCCCACTGCCAG
 GCTCTGGGGCCAAGCCACTGGACAGCACAGGCACCATTCGAGGCCCACTGAAGACCGCCCCATCGCAGGT
 GATCCGGAGACAAGCCTCCAGCATGCCACTGGGACAACCATGGGCTCTCCTGCCAGTCCCCAGGACCC
 AACAGCAAAGACCGGAAGGGTGGCCCTGGCCACCTTGAATCGTACCAACCTGCAGCGACTGGCCATTGCC
 AGTCCCGGGTGTGATCGCCTCTGGGGTCCCCACAGTCCAGTGAAGAACCTAAATGGGTCCAGTCTGT
 CAACCTGCCTTGGCAGGAATCACTGGGATCCTCATGAGTGCAGCGGGGTGCCTGTGTGTCTCACCAGG
 CCACCAAAGCTGGTCTACACCCACCCCGTCAGCAAGAGTGAATAAAAATCCATCCCAGGGGTTTCCA
 ACACAAGCCGCAAGACCACCAAAAAACAAGCCAAGAAAGGTAAAACCCAGAGGAAGTGTAAAAAATA
 TCTACAGAAAGTCCGGCACCCACAGATGAGGACTGCACCATCTGTATGGAACGCCTCACGGCCCCCTCA
 GGCTACAAGGGCCCGCAGCCTACGGTAAAACTGACCTGGTAGGGAAGCTGTCCAGATGCGGCCACGTCT
 ACCACATCTACTGCTTGGTTGCCATGTACAACAATGGGAACAAGGATGGAAGTTTGCAGTGTCCAACCTG
 CAAGACCATTTATGGGGTGAAGACAGGCACCCAACCTCCAGGGAAGATGGAGTACCACCTCATCCCCAC
 TCCTTGCCTGGCCACCCAGACTGCAAAACCATCCGGATCATCTACAGCATCCCCCGGCATTACGGGAC
 CGGAACACCCGAATCCTGGGAAGAGTTTACGCGCCGAGGCTTCCACGACACTGTTACCTTCCGGACAG
 CGAAGAAAGGAGAAAAGTTCTGAAGCTGCTGCTCGTGGCCTGGGATCGCCGCCTATTTTGGCATTGGC
 ACCTCCAGCACCCAGGGGAGTCAAGACCCGTCATCTGGAATGAGGTCCACCACAAGACAGAGTTTGGCT
 CTAATCTCACTGGCCATGGCTACCCAGATGCCAATTACCTGGATAATGTGCTGGCTGAACCTGGCTGCCCA
 GGGCATCTCTGAGGACAGCACTGCCCAGGAGAAGGAC

ACGCGTACGCGGCCGCTCGAGCAGAAACTCATCTCAGAAGAGGATCTGGCAGCAAATGATATCCTGGATT
 ACAAGGATGACGACGATAAGGTTTAA

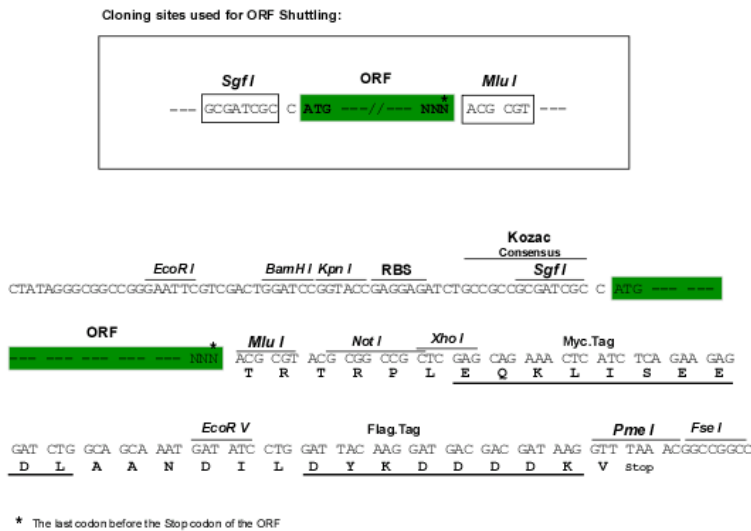
Protein Sequence:

>RC217321 representing NM_015177
 Red=Cloning site Green=Tags(s)

MLLASAVVWELNEHGRWRPYPSPAVSHHIEAVVRAGPRAGGSVVLQVDSRLAPYIIDLQSMNQFRQDT
 GTLRPVRNYYDPSSAPGKGVVWEWENDNGSWTPYDMEVGITIQHAYEKQHPWIDLTSIGFSYVIDFNTM
 GQINRQTQRQRRVRRRLDIYPMVTGTLPKAQSWPVSPGPATSPPMSPCSCPQCVLMSVKAAVVNGSTG
 PLQLPVTRKNMPPPGVVKLPLPGSGAKPLDSTGTIRGPKTAPSQVIRRQASSMPTGTTMGSPASPPGP
 NSKTGRVALATLNRTNLQRLAIAQSRVLIASGVPTVPVKNLNGSSPVNPALAGITGILMSAAGLPVCLTR
 PPKLVLHPPPVSSEIKSIPGVSNTRKTTKKQAKKGTPEEVLKYLQKVRHPPDEDCTICMERLTAPS
 GYKGPQPTVKPDLVGKLSRCGHVYHIYCLVAMYNNGNKDGSLQCPTCKTIYGVKGTQPPGKMEYHLIPH
 SLPGHPDCKTIRIIYSIPPQIQGPEHPNPKSFSARGFPRHCYLPDSEKGRKVLKLLVAVDRRLIFAIG
 TSSTTGESDVIWNEVHHKTEFGSNLTGHGYPDANYLDNVLAELAAQGISDSTAQEKD

TRTRPLEQKLISEEDLAANDILDYKDDDDKV

Chromatograms: https://cdn.origene.com/chromatograms/mk8015_d10.zip
 Restriction Sites: SgfI-MluI
 Cloning Scheme:



ACCN: NM_015177
 ORF Size: 1857 bp

OTI Disclaimer: Due to the inherent nature of this plasmid, standard methods to replicate additional amounts of DNA in E. coli are highly likely to result in mutations and/or rearrangements. Therefore, OriGene does not guarantee the capability to replicate this plasmid DNA. Additional amounts of DNA can be purchased from OriGene with batch-specific, full-sequence verification at a reduced cost. Please contact our customer care team at custsupport@origene.com or by calling 301.340.3188 option 3 for pricing and delivery.

The molecular sequence of this clone aligns with the gene accession number as a point of reference only. However, individual transcript sequences of the same gene can differ through naturally occurring variations (e.g. polymorphisms), each with its own valid existence. This clone is substantially in agreement with the reference, but a complete review of all prevailing variants is recommended prior to use. [More info](#)

OTI Annotation: This clone was engineered to express the complete ORF with an expression tag. Expression varies depending on the nature of the gene.

Components: The ORF clone is ion-exchange column purified and shipped in a 2D barcoded Matrix tube containing 10ug of transfection-ready, dried plasmid DNA (reconstitute with 100 ul of water).

Reconstitution Method:

1. Centrifuge at 5,000xg for 5min.
2. Carefully open the tube and add 100ul of sterile water to dissolve the DNA.
3. Close the tube and incubate for 10 minutes at room temperature.
4. Briefly vortex the tube and then do a quick spin (less than 5000xg) to concentrate the liquid at the bottom.
5. Store the suspended plasmid at -20°C. The DNA is stable for at least one year from date of shipping when stored at -20°C.

RefSeq: [NM_015177.2](#)

RefSeq Size: 5795 bp

RefSeq ORF: 1860 bp

Locus ID: 23220

UniProt ID: [Q9Y2E6](#)

Cytogenetics: 11q12.1

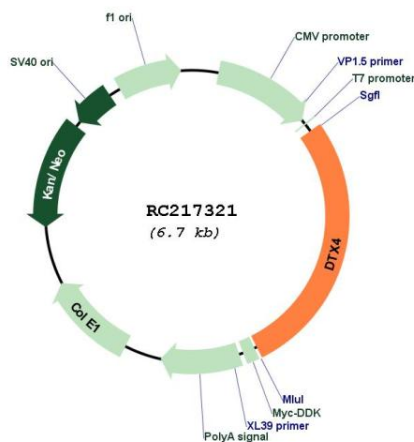
Protein Families: Druggable Genome

Protein Pathways: Notch signaling pathway

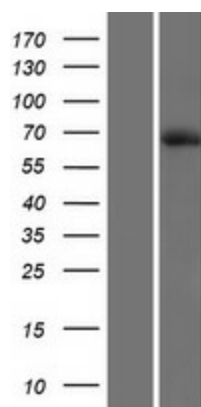
MW: 67.1 kDa

Gene Summary: Regulator of Notch signaling, a signaling pathway involved in cell-cell communications that regulates a broad spectrum of cell-fate determinations (By similarity). Functions as a ubiquitin ligase protein in vivo, mediating 'Lys48'-linked polyubiquitination and promoting degradation of TBK1, targeting to TBK1 requires interaction with NLRP4.[UniProtKB/Swiss-Prot Function]

Product images:



Circular map for RC217321



Western blot validation of overexpression lysate (Cat# [LY414733]) using anti-DDK antibody (Cat# [TA50011-100]). Left: Cell lysates from untransfected HEK293T cells; Right: Cell lysates from HEK293T cells transfected with RC217321 using transfection reagent MegaTran 2.0 (Cat# [TT210002]).