

Product datasheet for RC217316

TP53BP2 (NM_001031685) Human Tagged ORF Clone

Product data:

Product Type:	Expression Plasmids
Product Name:	TP53BP2 (NM_001031685) Human Tagged ORF Clone
Tag:	Myc-DDK
Symbol:	TP53BP2
Synonyms:	53BP2; ASPP2; BBP; P53BP2; PPP1R13A
Mammalian Cell Selection:	Neomycin
Vector:	pCMV6-Entry (PS100001)
E. coli Selection:	Kanamycin (25 ug/mL)
ORF Nucleotide Sequence:	>RC217316 representing NM_001031685 Red=Cloning site Blue=ORF Green=Tags(s)

TTTTGTAATACGACTCACTATAGGGCGGCCGGAATTCGTCGACTGGATCCGGTACCGAGGAGATCTGCC
GCC**CGATCGCC**

ATGCCGATGTTTCTTACCGTGTATCTCAGTAACAATGAGCAGCACTTCACAGAAGTTCAGTTACTCCAG
AAACAATATGCAGAGACGTGGTGGATCTGTGCAAAGAACCCGGCGAGAGTGATTGCCATTTGGCTGAAGT
GTGGTGTGGCTCTGAACGTCCAGTTGCGGATAATGAGCGAATGTTTGATGTTCTCAACGATTTGGAAGT
CAGAGGAACGAAGTTCGTTCTTCTTCGTCATGAACGCCCCCTGGCAGGGACATTGTGAGTGGACCA
GATCTCAGGATCCAAGTTTAAAAAGAAATGGTGTAAAAGTTCCTGGTGAATATCGAAGAAAGGAGAACGG
TGTTAATAGTCTAGGATGGATCTGACTCTTGCTGAACCTCAGGAAATGGCATCTCGCCAGCAGCAACAG
ATTGAAGCCCAGCAACAATTGCTGGCAACTAAGGAACAGCGCTTAAAGTTTTTGAACAACAAGATCAGC
GACAACAGCAACAAGTTGCTGAGCAGGAGAAAATAAAAGGCTAAAAGAAATAGCTGAGAATCAGGAAGC
TAAGCTAAAAAAGTGAGAGCACTTAAAGGCCACGTGGAACAGAAAGAGACTAAGCAATGGGAAACTTGTG
GAGGAAATTGAACAGATGAATAATTTGTTCCAGCAAAAACAGAGGGAGCTCGTCTGGCTGTGTCAAAG
TAGAAGAAGTACCAGGCAGCTAGAGATGCTCAAGAACGGCAGGATCGACAGCCACCATGACAATCAGTC
TGCAGTGGCTGAGCTTGATCGCCTCTATAAGGAGCTGCAGCTAAGAAACAATTTGAATCAAGAGCAGAAT
GCCAAGCTACAACAACAGAGGGAGTGTGTTGAATAAGCGTAATTCAGAAGTGGCAGTCATGGATAAGCGTG
TTAATGAGCTGAGGGACCGGCTGTGGAAGAAGAAGGCAGCTCTACAGCAAAAAGAAAATCTACCAGTTTC
ATCTGATGGAATCTTCCCAGCAAGCCGCTCAGCCCCAAGCCGTGTGGCTGCAGTAGGTCCTATATC
CAGTCGCTACTATGCCTCGGATGCCCTCAAGGCTGAATTGCTGGTGAAGCCAGCCCTGCCGGATGGTT
CCTTGGTCATTCAGGCTCAGAGGGGCCGATGAAAATACAGACTGCCCAACATGAGATCTGGGGCTGC
TTCACAACTAAAGGCTCTAAAATCCATCCAGTTGCCCTGATTGGAGTCTTCAAATGCAGATCTTTTC
CCAAGCCAAGGCTCTGCTTCTGTACCTCAAAGCACTGGGAATGCTCTGGATCAAGTTGATGATGGAGAGG
TTCCGCTGAGGGAGAAAGAGAAGAAAGTGGTCCGTTCTCAATGTTTGATGCAGTAGACCAGTCCAATGC
CCCACCTCTTTGGTACTCTGAGGAAGAACCAGAGCAGTGAAGATATCTTGGCGGATGCTCAGGTTGCA



[View online »](#)

AATAAAAATGTGGCTAAAGTACCACCTCCTGTTCTACAAAACAAAACAGATTAATTTGCCTTATTTTG
GACAAACTAATCAGCCACCTTCAGACATTAAGCCAGACGGAAGTTCTCAGCAGTTGTCAACAGTTGTTCC
GTCCATGGGAACTAAACCAAAACCAGCAGGGCAGCAGCCGAGAGTGTCTATCTCCAGCATACCTTCG
GTTGGCCAAGACCAGACCCTTTCTCCAGGTTCTAAGCAAGAAAGTCCACCTGCTGCTGCCGTCCGGCCCT
TACTCCCCAGCCTTCCAAGACACCTTACTTCCACCTTCAGAAAACCCAGACCGTGGCAGCAAGTTC
AATATATTCATGTATACGCAACAGCAGGCGCCAGGAAAAAACTCCAGCAGGCTGTGCAGAGCGGTTG
ACCAAGACTCATACCAGAGGGCCACACTTTTCAAGTGTATATGGTAAGCCTGTAATTGCTGCTGCCAGA
ATCAACAGCAGCACCCAGAGAACATTTATTCCAATAGCCAGGGCAAGCCTGGCAGTCCAGAACCTGAAAC
AGAGCCTGTTTCTCAGTTCAGGAGAACCATGAAAACGAAAGAATTCTCGGCCACTCAGCCCAACTAAA
TACTGCCTTTCTATCTAATCCTTACCAGAACAGAGTGATGCTGACCTAGAAGCCTTACGAAAGAAAAC
TGTCTAACGCACCAAGGCCTCTAAAGAAACGTAGTTCTATTACAGAGCCAGAGGGTCTAATGGGCCAAA
TATTCAGAAGCTTTTATATCAGAGGACCACCATAGCGGCCATGGAGACCATCTGTGCCATCATACCCA
TCCAAGTCAGCTTCTGTGACTGCCAGCTCAGAAAGCCAGTAGAAATCCAGAATCCATATTTACATGTGG
AGCCCCAAAAGGAGGTGGTCTCTCTGGTCTCTGAATCATTGTCCCAGAGGATGTGGGGAATGCCAGTAC
AGAGAACAGTGACATGCCAGCTCCTTCTCCAGGCCTTGATTATGAGCCTGAGGGAGTCCCAGACAACAGC
CCAAATCTCCAGAATAACCCAGAGAACCAGAAATCCAGAGGCTCCACATGTGCTTGATGTGTACCTGGAGG
AGTACCCTCCATACCCACCCCCACCATACCCATCTGGGGAGCCTGAAGGGCCCGGAGAAGACTCGGTGAG
CATGCGCCCGCTGAAATCACCGGGCAGGTCTCTCTGCCTCCTGGTAAAAGGACAAAATTGCGTAAAAC
GGCTCAGAGCGTATCGCTCATGGAATGAGGGTGAATTCACCCCTTGCTTTACTGCTAGATTCGTCTT
TGGAGGGAGAATTTGACCTTGTACAGAGAATATTTATGAGGTTGATGACCCAAGCCTCCCCAATGATGA
AGGCATCACGGCTCTTACAATGCTGTGTGTGCAGGCCACACAGAAATCGTTAAGTTCTGGTACAGTTT
GGTGTAATGTAATGCTGCTGATAGTGATGGATGGACTCCATTACATTGTGCTGCCTCATGTAACAACG
TCCAAGTGTGTAAGTTTTGGTGGAGTCAGGAGCCGCTGTGTTGCCATGACCTACAGTGACATGCAGAC
TGCTGCAGATAAGTGCGAGGAAATGGAGGAAGGCTACACTCAGTGTCTCCAATTTCTTTATGGAGTTCAG
GAGAAGATGGGCATAATGAATAAAGGAGTCATTTATGCGCTTTGGGATTATGAACCTCAGAATGATGATG
AGCTGCCATGAAAGAAGGAGACTGCATGACAATCATCCACAGGGAAGACGAAGATGAAATCGAATGGTG
GTGGGCGCGCTTAATGATAAGGAGGGATATGTTCCACGTAACCTGCTGGGACTGTACCCAAGAATTA
CCAAGACAAGGAGCTTGGCC

ACGCGTACGCGGCCGCTCGAGCAGAACTCATCTCAGAAGAGGATCTGGCAGCAATGATATCCTGGATT
ACAAGGATGACGACGATAAGGTTTAA

Protein Sequence: >RC217316 representing NM_001031685
 Red=Cloning site Green=Tags(s)

MPMFLTVYLSNNEQHFTVPVTPETICRDVVDLCKEPGESDCHLAEVWCGSERPVADNERMFDVLQRFGS
 QRNEVRFLLRHERPPGRDIVSGPRSQDPSLKRNGVKVPGEYRRKENGVNSPRMDLTLAELQEMASRQQQ
 IEAQQLLATKEQRLKFLKQQDQRQQQVAEQEKLKRLKEIAENQEAALKKVRALKGHVEQKRLSNGKLV
 EEIEQMNNLFQKQRELVLAVSKVEELTRQLEMLKNGRIDSHHDNQSAVAELDRLYKELQLRNKLNQEQN
 AKLQQRECLNKRNSEVAVMDKRVNELRDRLWKKKAALQQKENLPVSSDGNLPQQAASAPSRVAAVGPIYI
 QSSTMPRMPSPPELLVKPALPDGSLVIQASEGPMKIQTLPNMRSGAASQTKGSKIHPVGPDWSPSNADLF
 PSQGSASVPQSTGNALDQVDDGEVPLREKEKKVRPF SMFDAVDQSNAPPSFGTLRKNQSSSEDILRDAQVA
 NKNVAKVPPPVPVTKPKQINLPYFGQTNQPPSDIKPDGSSQQLSTVVPSMGTKPKPAGQQPRVLLSPSIPS
 VGQDQTLSPGSKQESPPAAAVRPF TPQPSKDTLLPPFRKPQTVAAASSIYSMTQQQAPGKNFQQAVQSAL
 TKHTTRGPHFSSVYGKPIAAAQNQQHPENIYNSQGKPGSPEPETEPVSSVQENHENERIPRPLSPTK
 LLPFLSNPYRNQSDADLEALRKKLSNAPRPLKKRSSITEPEGPNQIQLLYQRTTIAAMETISVPSYP
 SKSASVTASSESPVEIQNPYLHVEPEKEVVSLVPESLSPEDVGNASTENSMPAPSPGLDYEPEGVPDNS
 PNLQNNPEEPNPEAPHVLDVYLEEYPPYPPPYPSGEPEGPGEDSVSMRPEITGQVSLPPGKRTNLRKT
 GSERIAHGMRVKFNPLALLLDSLEGEFDLVQRIIYEVDDPSLPNDEGITALHNAVCAHGTEIVKFLVQF
 GVNVAADSDGWTPHCAASCNNVQVCKFLVESGAAVFAMTYSMQTAADKCEEMEEGYTQCSQFLYGVQ
 EKMGMNKGVYIALWDYEPQNDDELPMKEGDCMTIIHREDEDEIEWWARLNDKEGYVPRNLLGLYPRIK
 PRQRSLA

TRTRPLEQKLISEEDLAANDILDYKDDDDKV

Chromatograms: https://cdn.origene.com/chromatograms/mg3356_e01.zip

Restriction Sites: SgfI-MluI

Cloning Scheme:

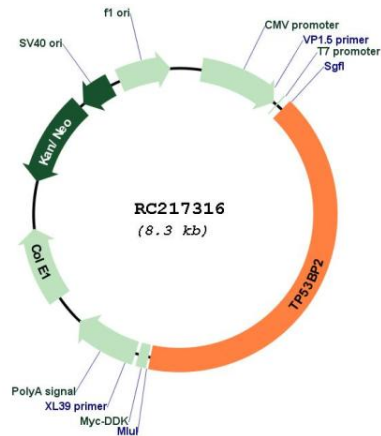


ACCN: NM_001031685

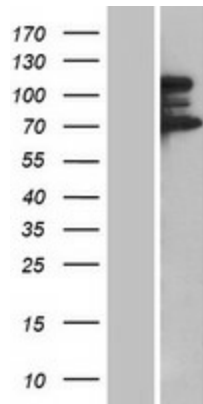
ORF Size: 3381 bp

OTI Disclaimer:	The molecular sequence of this clone aligns with the gene accession number as a point of reference only. However, individual transcript sequences of the same gene can differ through naturally occurring variations (e.g. polymorphisms), each with its own valid existence. This clone is substantially in agreement with the reference, but a complete review of all prevailing variants is recommended prior to use. More info
OTI Annotation:	This clone was engineered to express the complete ORF with an expression tag. Expression varies depending on the nature of the gene.
Components:	The ORF clone is ion-exchange column purified and shipped in a 2D barcoded Matrix tube containing 10ug of transfection-ready, dried plasmid DNA (reconstitute with 100 ul of water).
Reconstitution Method:	<ol style="list-style-type: none">1. Centrifuge at 5,000xg for 5min.2. Carefully open the tube and add 100ul of sterile water to dissolve the DNA.3. Close the tube and incubate for 10 minutes at room temperature.4. Briefly vortex the tube and then do a quick spin (less than 5000xg) to concentrate the liquid at the bottom.5. Store the suspended plasmid at -20°C. The DNA is stable for at least one year from date of shipping when stored at -20°C.
RefSeq:	NM_001031685.1 , NP_001026855.1
RefSeq Size:	4670 bp
RefSeq ORF:	3405 bp
Locus ID:	7159
UniProt ID:	Q13625
Cytogenetics:	1q41
Protein Families:	Druggable Genome
MW:	126.1 kDa
Gene Summary:	This gene encodes a member of the ASPP (apoptosis-stimulating protein of p53) family of p53 interacting proteins. The protein contains four ankyrin repeats and an SH3 domain involved in protein-protein interactions. It is localized to the perinuclear region of the cytoplasm, and regulates apoptosis and cell growth through interactions with other regulatory molecules including members of the p53 family. Multiple transcript variants encoding different isoforms have been found for this gene. [provided by RefSeq, Jul 2008]

Product images:



Circular map for RC217316



Western blot validation of overexpression lysate (Cat# [LY421900]) using anti-DDK antibody (Cat# [TA50011-100]). Left: Cell lysates from untransfected HEK293T cells; Right: Cell lysates from HEK293T cells transfected with RC217316 using transfection reagent MegaTran 2.0 (Cat# [TT210002]).