

Product datasheet for RC217315

ZNF3 (NM_017715) Human Tagged ORF Clone

Product data:

Product Type: Expression Plasmids
Product Name: ZNF3 (NM_017715) Human Tagged ORF Clone
Tag: Myc-DDK
Symbol: ZNF3
Synonyms: A8-51; HF.12; KOX25; PP838; Zfp113
Mammalian Cell Selection: Neomycin
Vector: pCMV6-Entry (PS100001)
E. coli Selection: Kanamycin (25 ug/mL)
ORF Nucleotide Sequence: >RC217315 representing NM_017715
 Red=Cloning site Blue=ORF Green=Tags(s)

TTTTGTAATACGACTCACTATAGGGCGCCGGGAATTCGTCGACTGGATCCGGTACCGAGGAGATCTGCC
 GCC**CGATCGCC**

ATGGAACTCAGGCTGATCTCGTATCTCAGGAACCTCAGGCCCTGCTTGACAGTCTTCTCTCAAAG
 TTCCTGCCTTTCCGACAAGGACAGCCTGGGGATGAGATGTTGGCGGCTGCGCTCTAAAGCCAAGTC
 CCAGGAGCTGGTAACCTTTGAGGATGTAGCTGTGTACTTCATCCGGAAGGAGTGAAGCGTTTGAACCT
 GCTCAGAGGGACCTCTATAGAGATGTGATGCTGGAGAATTACGGGAATGTGTTCTACTGGACTGGATAC
 ACGTCTGTTAACTACGCAAAGGTAATGCTGGCATGGCTTACTGGACCCTAAGTGTGGCGAAGGGACT
 CTGCTCCAGTGAAGTGGCGAGTGTGGAACCTCCTGACACCTTC

ACGCGTACGCGGCCGCTCGAGCAGAAACTCATCTCAGAAGAGGATCTGGCAGCAAATGATATCCTGGATT
 ACAAGGATGACGACGATAAGGTTTAA

Protein Sequence: >RC217315 representing NM_017715
 Red=Cloning site Green=Tags(s)

METQADLVSQEPQALLDSALPSKVPAFSDKDSLGDMLAAALLKAKSQELVTFEDVAVYFIRKEWKRLPE
 AQRDLRYRDMLENYGNVFSLDWIHVCLTTQKVMLAWLTGTLVAVKGLCSSELASVEPPDTF

TRTRPLEQKLISEEDLAANDILDYKDDDDKV

Chromatograms: https://cdn.origene.com/chromatograms/mk8056_d03.zip

Restriction Sites: SgfI-MluI



[View online »](#)

Cloning Scheme:


ACCN: NM_017715

ORF Size: 1310 bp

OTI Disclaimer: The molecular sequence of this clone aligns with the gene accession number as a point of reference only. However, individual transcript sequences of the same gene can differ through naturally occurring variations (e.g. polymorphisms), each with its own valid existence. This clone is substantially in agreement with the reference, but a complete review of all prevailing variants is recommended prior to use. [More info](#)

OTI Annotation: This clone was engineered to express the complete ORF with an expression tag. Expression varies depending on the nature of the gene.

Components: The ORF clone is ion-exchange column purified and shipped in a 2D barcoded Matrix tube containing 10ug of transfection-ready, dried plasmid DNA (reconstitute with 100 ul of water).

- Reconstitution Method:**
1. Centrifuge at 5,000xg for 5min.
 2. Carefully open the tube and add 100ul of sterile water to dissolve the DNA.
 3. Close the tube and incubate for 10 minutes at room temperature.
 4. Briefly vortex the tube and then do a quick spin (less than 5000xg) to concentrate the liquid at the bottom.
 5. Store the suspended plasmid at -20°C. The DNA is stable for at least one year from date of shipping when stored at -20°C.

RefSeq: [NM_017715.4](#)

RefSeq Size: 1625 bp

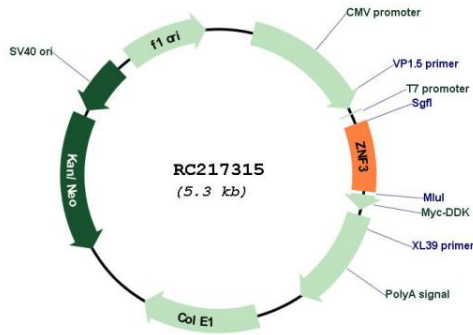
RefSeq ORF: 396 bp

Locus ID: 7551

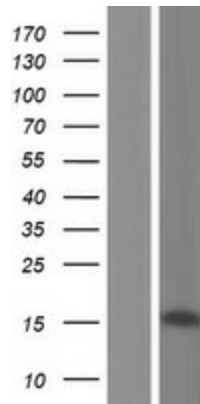
UniProt ID: [P17036](#)

Cytogenetics: 7q22.1
Domains: KRAB, zf-C2H2
Protein Families: Transcription Factors
MW: 14.4 kDa
Gene Summary: Involved in cell differentiation and/or proliferation.[UniProtKB/Swiss-Prot Function]

Product images:



Circular map for RC217315



Western blot validation of overexpression lysate (Cat# [LY413596]) using anti-DDK antibody (Cat# [TA50011-100]). Left: Cell lysates from untransfected HEK293T cells; Right: Cell lysates from HEK293T cells transfected with RC217315 using transfection reagent MegaTran 2.0 (Cat# [TT210002]).