

## Product datasheet for **RC217310**

### IGF2BP2 (NM\_001007225) Human Tagged ORF Clone

#### Product data:

Product Type:	Expression Plasmids
Product Name:	IGF2BP2 (NM_001007225) Human Tagged ORF Clone
Tag:	Myc-DDK
Symbol:	IGF2BP2
Synonyms:	IMP-2; IMP2; VICKZ2
Mammalian Cell Selection:	Neomycin
Vector:	pCMV6-Entry (PS100001)
E. coli Selection:	Kanamycin (25 ug/mL)



[View online »](#)

**ORF Nucleotide Sequence:**

>RC217310 representing NM\_001007225  
 Red=Cloning site Blue=ORF Green=Tags(s)

TTTTGTAATACGACTCACTATAGGGCGGCCGGAATTCGTGACTGGATCCGGTACCGAGGAGATCTGCC  
 GCC**GCGATCGCC**

ATGATGAACAAGCTTTACATCGGGAACCTGAGCCCCGCCGTACCGCCGACGACCTCCGGCAGCTCTTTG  
 GGGACAGGAAGCTGCCCCTGCGGGACAGGTCCTGCTGAAGTCCGGCTACGCCTTCGTGGACTACCCCGA  
 CCAGAACTGGGCCATCCGCGCCATCGAGACCCTCTCGGGTAAAGTGAATTGCATGGGAAAAATCATGGAA  
 GTTGATTACTCAGTCTCTAAAAAGCTAAGGAGCAGGAAAAATTCAGATTGAAACATCCCTCCTCACCTGC  
 AGTGGGAGGTGTTGGATGGACTTTGGCTCAATATGGGACAGTGGAGAATGTGGAACAAGTCAACACAGA  
 CACAGAAACCGCCGTTGTCAACGTCACATATGCAACAAGAGAAGAAGCAAAAATAGCCATGGAGAAGCTA  
 AGCGGGCATCAGTTTGAGAACTACTCCTCAAGATTTCTACATCCGGATGAAGAGGTGAGCTCCCCTT  
 CGCCCCCTCAGCGAGCCAGCGTGGGACCCTTCCCGGGAGCAAGGCCACGCCCTGGGGGCACCTT  
 TCAGGCCAGACAGATTGATTTCCCGCTGCGGATCCTGGTCCCCACCCAGTTTGTGGTGCCATCATCGGA  
 AAGGAGGGCTTGACCATAAAGAACATCACTAAGCAGACCCAGTCCCGGTAGATATCCATAGAAAAGAGA  
 ACTCTGGAGCTGCAGAGAAGCCTGTCACCATCCATGCCACCCAGAGGGGACTTCTGAAGCATGCCGCAT  
 GATTCTTGAATCATGCAGAAAGAGGCAGATGAGACAACTAGCCGAAGAGATTCTCTGAAAATCTTG  
 GCACACAATGGCTTGGTTGGAAGACTGATTGAAAAGAAGGCAGAAAATTTGAAGAAAATGAACATGAAA  
 CAGGGACCAAGATAACAATCTCATCTTTGCAGGATTTGAGCATATAACAACCCGAAAGAACCATCACTGT  
 GAAGGGCACAGTTGAGGCCTGTGCCAGTGTGAGATAGAGATTATGAAGAAGTGCCTGAGGCCTTTGAA  
 AATGATATGCTGGCTGTTAACACCCACTCCGGATACTTCTCCAGCCTGTACCCCATCCACAGTTTGGCC  
 CGTTCGCCATCATCACTCTTATCCAGAGCAGGAGATTGTAATCTTTCATCCCAACCCAGCTGTGGG  
 CGCCATCATCGGGAAGAAGGGGGCACACATCAAACAGCTGGCGAGATTGCGCGGAGCCTCTATCAAGATT  
 GCCCTGCGGAAGGCCAGAGCTCAGCGAAAGGATGGTATCATCACCGGCCACCGGAAGCCAGTTCA  
 AGGCCAGGGACGGATCTTTGGGAACTGAAAGAGGAAAATCTTTAACCCCAAAGAAGTGAAGCT  
 GGAAGCGCATATCAGAGTGCCCTCTCCACAGCTGGCCGGGTGATTGGCAAAGGTGGCAAGACCGTGAAC  
 GAACTGCAGAACTTAACAGTGCAGAAGTATCGTGCCTCGTGACCAAACGCCAGATGAAAATGAGGAAG  
 TGATCGTCAGAATTATCGGGCACTTCTTTGCTAGCCAGACTGCACAGCGCAAGATCAGGGAATTTGACA  
 ACAGGTGAAGCAGCAGGAGCAGAAATACCCTCAGGGAGTCGCCTCACAGCGCAGCAAG

**ACGCGT**ACGCGGCCGCTCGAGCAGAAACTCATCTCAGAAGAGGATCTGGCAGCAAATGATATCCTGGATT  
 ACAAGGATGACGACGATAAGGTTTAA

**Protein Sequence:**

>RC217310 representing NM\_001007225  
 Red=Cloning site Green=Tags(s)

MMNKLYIGNLSPAVTADDLRQLFGDRKPLAGQVLLKSGYAFVDYDPQNWAIETLSGKVELHGKIME  
 VDYSVSKLRSRKIQIRNIPPHLQWEVLDGLLAQYGTVENVEQVNTDTEAVVNVYATREEAKIAMEKL  
 SGHQFENYSFKISYIPDEEVSSPSPQRAQRGDHSSREQGHAPGGTSQARQIDFPLRILVPTQFVGAIIIG  
 KEGLTIKNITKQTQSRVDIHRKENSAAEKPVTIHATPEGTSEACRMILEIMQKEADETKLAEEIPLKIL  
 AHNGLVGRLIGKEGRNLKKEHETGKITISSLQDL SIYNPERTITVKGTVEACASAEIEIMKKLREAFE  
 NDMLAVNTHSGYFSSLYPHHQFGPFPHHHSYPEQEI VNLFIPTQAVGAIIGKKGAIKQLARFAGASIKI  
 APAEGPDVSERMVITGPPEAQFKAQGRIFGKLKEENFNPKKEEVKLEAHIRVPSSTAGRVIKGGKTVN  
 ELQNL TSAEIVPRDQTPDENEEVIVRIIGHFFASQTAQRKIREIVQVVKQEQKYPQGVASQRSK

**TR**TRPLEQKLISEEDLAANDILDYKDDDDKV

**Chromatograms:**

[https://cdn.origene.com/chromatograms/mk8067\\_b03.zip](https://cdn.origene.com/chromatograms/mk8067_b03.zip)

**Restriction Sites:**

Sgfl-Mlul

**Cloning Scheme:**


**ACCN:** NM\_001007225

**ORF Size:** 1668 bp

**OTI Disclaimer:** The molecular sequence of this clone aligns with the gene accession number as a point of reference only. However, individual transcript sequences of the same gene can differ through naturally occurring variations (e.g. polymorphisms), each with its own valid existence. This clone is substantially in agreement with the reference, but a complete review of all prevailing variants is recommended prior to use. [More info](#)

**OTI Annotation:** This clone was engineered to express the complete ORF with an expression tag. Expression varies depending on the nature of the gene.

**Components:** The ORF clone is ion-exchange column purified and shipped in a 2D barcoded Matrix tube containing 10ug of transfection-ready, dried plasmid DNA (reconstitute with 100 ul of water).

- Reconstitution Method:**
1. Centrifuge at 5,000xg for 5min.
  2. Carefully open the tube and add 100ul of sterile water to dissolve the DNA.
  3. Close the tube and incubate for 10 minutes at room temperature.
  4. Briefly vortex the tube and then do a quick spin (less than 5000xg) to concentrate the liquid at the bottom.
  5. Store the suspended plasmid at -20°C. The DNA is stable for at least one year from date of shipping when stored at -20°C.

**RefSeq:** [NM\\_001007225.3](#)

**RefSeq Size:** 3547 bp

**RefSeq ORF:** 1671 bp

**Locus ID:** 10644

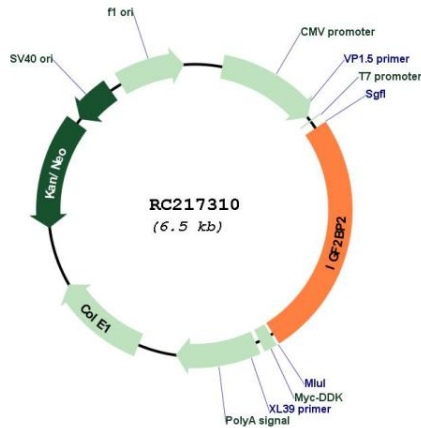
**UniProt ID:** [Q9Y6M1](#)

**Cytogenetics:** 3q27.2

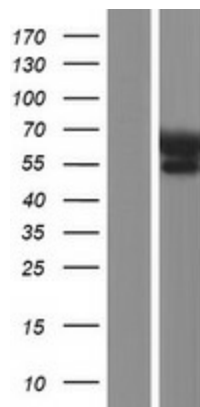
**MW:** 61.7 kDa

**Gene Summary:** This gene encodes a protein that binds the 5' UTR of insulin-like growth factor 2 (IGF2) mRNA and regulates its translation. It plays an important role in metabolism and variation in this gene is associated with susceptibility to diabetes. Alternative splicing and promoter usage results in multiple transcript variants. Related pseudogenes are found on several chromosomes. [provided by RefSeq, Sep 2016]

**Product images:**



Circular map for RC217310



Western blot validation of overexpression lysate (Cat# [LY423450]) using anti-DDK antibody (Cat# [TA50011-100]). Left: Cell lysates from untransfected HEK293T cells; Right: Cell lysates from HEK293T cells transfected with RC217310 using transfection reagent MegaTran 2.0 (Cat# [TT210002]).