

## Product datasheet for RC217308

### DEGS2 (NM\_206918) Human Tagged ORF Clone

#### Product data:

Product Type:	Expression Plasmids
Product Name:	DEGS2 (NM_206918) Human Tagged ORF Clone
Tag:	Myc-DDK
Symbol:	DEGS2
Synonyms:	C14orf66; DES2; FADS8
Mammalian Cell Selection:	Neomycin
Vector:	pCMV6-Entry (PS100001)
E. coli Selection:	Kanamycin (25 ug/mL)
ORF Nucleotide Sequence:	>RC217308 ORF sequence Red=Cloning site Blue=ORF Green=Tags(s)

TTTTGTAATACGACTCACTATAGGGCGGCCGGAATTCGTCGACTGGATCCGGTACCGAGGAGATCTGCC  
GCC**CGATCGCC**

ATGGGCAACAGCGCGAGCCGAGCGACTTCGAGTGGGTCTACACCGACCAGCCGCACACGCAGCGGCGCA  
AGGAGATACTGGCCAAGTACCCGGCCATCAAGGCCCTGATGCGGCCAGACCCGCGCCTCAAGTGGGCGGT  
GCTGGTGTGGTCTGGTGCAGATGCTGACCTGCTGGCTGGTGC GCGGGCTGGCCTGGCGCTGGCTGCTG  
TTCTGGGCTACGCCTTTGGTGGCTGCGTGAACCACTCGCTGACGCTGGCCATCCAGACATCTCGACA  
ACGCGGCCTTCGGCAGGGCCGTGCGGCACGCAACCGCTGGCTGGCCGTGTTTCGCCAACCTGCCCGTGGG  
TGTGCCCTACGCCGCTCCTTCAAGAAGTACCAGTGGACCACCACCGCTACCTGGGCGGCAGCGGCTG  
GACGTGGACGTGCCACGCGTCTGGAGGGCTGGTCTTCTGACGCCCCGCCGCAAGCTGCTCTGGCTGG  
TGCTGCAGCCCTTCTTCTACTACTACGGCCGCTCTGCGTCCACCCCAAGGCCGTGACCCGCATGGAGGT  
GCTCAACACGCTGGTGCAGCTGGCGGCCGACCTGGCCATCTTTGCCCTTTGGGGCTCAAGCCCGTGGTC  
TACCTGCTGGCCAGCTCCTTCTGGCCCTGGCCCTGCACCCCATCTCGGGCCACTTCGTGGCCGAGCACT  
ACATGTTCTCAAGGGCCAGGACCTACTCCTACTATGGGCCTCAACTGGATCACCTCAATGTGGG  
CTACCAGTGGAGCACCAGACTTCCCCAGCATCCCGGGCTACAACCTGCCGCTGGTCCGGAAGATCGCG  
CCCGAGTACTACGACCACCTGCCGAGCACCCTCCTGGGTGAAGGTGCTCTGGATTTTGTGTTGAGG  
ACTCCCTGGGGCCCTATGCCAGGGTGAAGCGGGGTACAGGCTGGCAAAGATGGTCTG

AG**CGGACCG**ACGCGTACGCGGCCGCTCGAGCAGAACTCATCTCAGAAGAGGATCTGGCAGCAAATGATATCC  
TGGATTACAAGGATGACGACGATAAGGTTTAA



[View online »](#)

**Protein Sequence:** >RC217308 protein sequence  
Red=Cloning site Green=Tags(s)

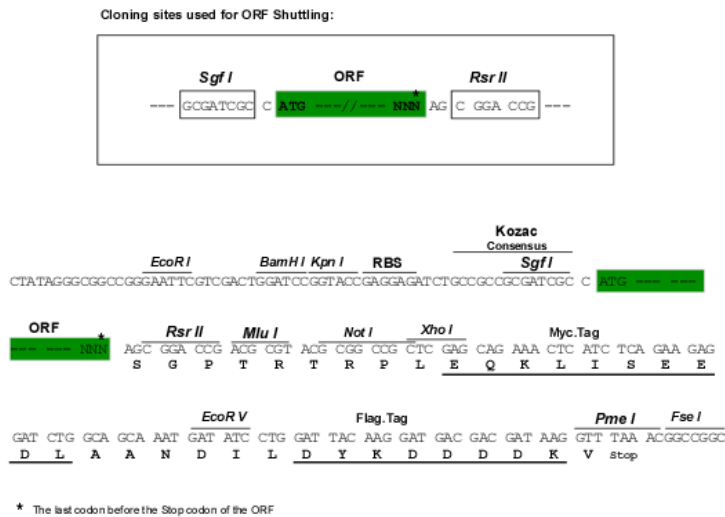
MGNSASRSDFEWVYTDQPHTQRRKEILAKYPAIKALMRPDPRLKWAFLVVLVQMLTCWLVRGLAWRWLL  
 FWAYAFGGCVNHSLLTAIHDI SHNAAFGTGRAARNRWLAVFANLPVGVVYAA SFKKYHVDHHRYLGGDGL  
 DVDVPTRELGWFFCTPARKLLWLVLQPFYSLRPLCVHPKAVTRMEVNLTLVQLAADLAIFALWGLKPVV  
 YLLASSFLGLGLHPI SGHFVAEHYMF LKGHETYSYYGPLNWI T FNVGYHVEHDFPSIPGYNLPLVRKIA  
 PEYYDHL PQHHSWVKVLWDFVFEDSLGPYARVKRYRRLAKDGL

SGPTRTRPLEQKLISEEDLAANDILDYKDDDDKV

**Chromatograms:** [https://cdn.origene.com/chromatograms/mk6616\\_e05.zip](https://cdn.origene.com/chromatograms/mk6616_e05.zip)

**Restriction Sites:** SgfI-RsrII

**Cloning Scheme:**



**ACCN:** NM\_206918

**ORF Size:** 969 bp

**OTI Disclaimer:** The molecular sequence of this clone aligns with the gene accession number as a point of reference only. However, individual transcript sequences of the same gene can differ through naturally occurring variations (e.g. polymorphisms), each with its own valid existence. This clone is substantially in agreement with the reference, but a complete review of all prevailing variants is recommended prior to use. [More info](#)

**OTI Annotation:** This clone was engineered to express the complete ORF with an expression tag. Expression varies depending on the nature of the gene.

**Components:** The ORF clone is ion-exchange column purified and shipped in a 2D barcoded Matrix tube containing 10ug of transfection-ready, dried plasmid DNA (reconstitute with 100 ul of water).

**Reconstitution Method:**

1. Centrifuge at 5,000xg for 5min.
2. Carefully open the tube and add 100ul of sterile water to dissolve the DNA.
3. Close the tube and incubate for 10 minutes at room temperature.
4. Briefly vortex the tube and then do a quick spin (less than 5000xg) to concentrate the liquid at the bottom.
5. Store the suspended plasmid at -20°C. The DNA is stable for at least one year from date of shipping when stored at -20°C.

**RefSeq:** [NM\\_206918.1](#), [NP\\_996801.1](#)

**RefSeq Size:** 1411 bp

**RefSeq ORF:** 972 bp

**Locus ID:** 123099

**UniProt ID:** [Q6QHC5](#)

**Cytogenetics:** 14q32.2

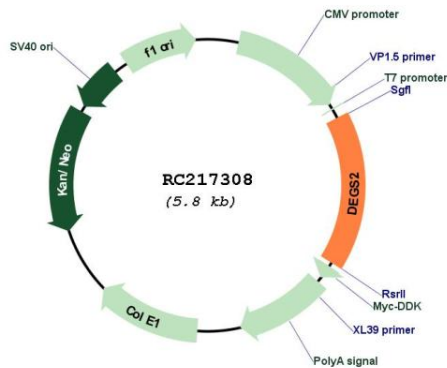
**Protein Families:** Transmembrane

**Protein Pathways:** Metabolic pathways, Sphingolipid metabolism

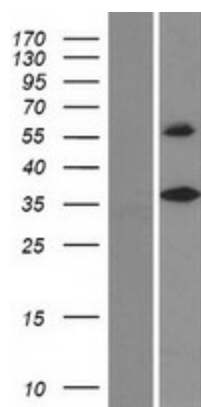
**MW:** 37.2 kDa

**Gene Summary:** This gene encodes a bifunctional enzyme that is involved in the biosynthesis of phytosphingolipids in human skin and in other phytosphingolipid-containing tissues. This enzyme can act as a sphingolipid delta(4)-desaturase, and also as a sphingolipid C4-hydroxylase. [provided by RefSeq, Oct 2008]

### Product images:



Circular map for RC217308



Western blot validation of overexpression lysate (Cat# [LY404167]) using anti-DDK antibody (Cat# [TA50011-100]). Left: Cell lysates from untransfected HEK293T cells; Right: Cell lysates from HEK293T cells transfected with RC217308 using transfection reagent MegaTran 2.0 (Cat# [TT210002]).