

## Product datasheet for RC217295

### AF10 (MLLT10) (NM\_004641) Human Tagged ORF Clone

#### Product data:

Product Type:	Expression Plasmids
Product Name:	AF10 (MLLT10) (NM_004641) Human Tagged ORF Clone
Tag:	Myc-DDK
Symbol:	AF10
Synonyms:	AF10
Mammalian Cell Selection:	Neomycin
Vector:	pCMV6-Entry (PS100001)
E. coli Selection:	Kanamycin (25 ug/mL)
ORF Nucleotide Sequence:	>RC217295 representing NM_004641 Red=Cloning site Blue=ORF Green=Tags(s)

TTTTGTAATACGACTCACTATAGGGCGGCCGGAATTCGTCGACTGGATCCGGTACCGAGGAGATCTGCC  
GCC**CGATCGCC**

ATGGTCTCTAGCGACCGGCCGTGCTCACTGGAGGACGAGGTCTCCCATAGTATGAAGGAGATGATTGGAG  
GCTGTTGCGTTTGGCTCAGACGAGAGAGGCTGGGCCGAGAACCCTGGTTTATTGCGACGGGCACGGCTG  
CAGCGTCGCGGTGCATCAAGCTTGCTATGGCATTGTTCAAGTACCCACTGGACCGTGGTTTTGCAGGAAA  
TGTGAATCTCAGGAGAGAGCAGCCAGAGTGAATGTGAACCTTTGTCCCATTAAGGATGGAGCTTTAAAAA  
GAACAGATAATGGGGTTGGGCCATGTGGTTTGTGCCCTGTATATTCCAGAGGTACAATTTGCCAATGT  
TTCCACAATGGAACCAATTGTTTTACAGTCTGTTCCGCATGATCGTTATAATAAGACTTGCTACATTTGT  
GATGAACAAGGAAGAAAGCAAAGCAGCCACTGGTGCTTGCATGACATGTAATAAACATGGATGTCGAC  
AGGCTTTCCATGTAACATGCGCTCAGTTTGCCGGACTGCTTTGTGAAGAAGAAGTAATGGTGCCGATAA  
TGTCCAATACTGTGGCTACTGTAATACCATTTTGAAGCTGAAAAAGAGCAAACGGGGATCTAATAGG  
TCATATGATCAAAGTTTAAAGTATTCTTCTCTCACTCTCAGGATAAACATCATGAGAAAGAGAAAAAAA  
AATATAAAGAGAAGGACAAACACAACAGAAACACAAGAAGCAGCCAGAACCATCACCTGCATTGGTTCC  
ATCCTTGACTGTTACTACAGAAAAAATTTACAAGCACTAGCAACAACCTCTATATCTGGATCATTGAAG  
CGTTGGAAGATACTACTGCACGATTTACAATGCAAATTTCCAGGAAGTCTCTGCACACACCTCTAGTG  
GAAAAGATGTTTCAGAGACTAGAGGGTCAGAGGGCAAAGGGAAGAAATCTCAGCTCACAGCTCAGGTCA  
AAGGGGAAGAAAGCCTGGTGGTGAAGAAATCCAGGAACAACCTGTGTCAGCAGCTAGCCCTTTCTCA  
GGCAGTTTTTCAGGAACCCAGGCAGTGTAAAGTCATCTTCTGGAAGTTCAGTGCAGTCTCCCCAGGATT  
TCCTGAGCTTTACAGACTCAGATCTGCGTAATGACAGTACTCTCACTCCCAACAGTCATCAGCAACCAA  
AGATGTACATAAAGGAGAGTCTGGAAGCCAGGAAGGGGGGTAATAGTTTTAGTACCTAATTGGCCTC  
CCTTCAACCTCAGCTGTTACTTCACAGCCTAAAAGCTTTGAAAATTCACCTGGAGATTTGGGTAATTCCA  
GCCTTCTACAGCAGGATATAAGCGGGCTCAAACCTTCTGGCATAGAAGAAGAACTGTAAGGAAAAAGAA  
AAGGAAAGGAAATAAACAAAGTAAGCATGGCCCTGGCAGACCCAAAGGAAACAAAAATCAAGAGAATGTT



[View online »](#)

TCTCATCTCTCAGTTTCTTGCTTACCAACATCATCTGTAGCATCAGCTGCAGGAAGCATAACAAGCT  
 CTAGTCTGCAGAAATCTCCTACATTGCTCAGGAATGGAAGTTTACAGAGCCTCAGTGTGGCTCATCTCC  
 AGTTGGTTCAGAAATTTCCATGCAGTATCGGCATGATGGAGCTTGCCCAACAACACTACGTTCTCAGAGTTG  
 CTGAATGCAATACACAACGACAGAGGTGACAGTTTACTACTAACAAGCAAGAACCTAAATTCATAGGTA  
 TTTATAACAGCAATGATGTAGCAGTATCGTTTCCAATGTAGTATCTGGCTCGGGATCTAGTACTCCTGT  
 CTCCAGCTCTCACTTACCTCAGCAGTCTTCTGGGCATTTGCAACAAGTAGGAGCGCTCTCTCCCTCAGT  
 GTGTCATCTGCAGCCCTGCTGTTGCTACAACCTCAGGCAAACTCTATCTGGATCTTCTCAGTCAGG  
 CACCATCTCATATGTATGGCAATAGATCAAATTCATCAATGGCAGCTCTTATAGCTCAGTCTGAAAACAA  
 TCAAACAGATCAAGATCTTGAGACAATAGCCGCAACCTAGTTGGCAGAGGAAGCTCACCCCGAGGAAGT  
 CTCTCGCCACGATCCCCTGTAAGCAGCTTACAGATTTCGCTATGATCAACCAGGCAACAGCAGTTTGGAAA  
 ATCTGCCTCCAGTAGCAGCCAGCATAGAACAGCTTTTGGAGAGGCAGTGGAGTGAAGGACAGCAATTTT  
 ACTAGAACAGGGTACTCCTAGTGACATTTTAGGAATGCTGAAGTCATTACACCAACTTCAAGTTGAAAAC  
 CGAAGATTAGAGGAACAAATTA AAAACTTGACTGCCAAAAGGAACGGCTTCAGTTATTGAATGCACAGC  
 TTTCAGTGCCTTTTCCAACAATAACAGCAAATCCTAGTCCGTCTCATCAAATACACATTTTCAGCACA  
 GACTGCTCCTACTACTGATTCTTGAACAGCAGTAAGAGCCCTCATATAGGAAACAGCTTTTACCTGAT  
 AATTCTCTTCTGTATTAATCAGGACTTAACCTCCAGTGGACAAAGTACCAGCAGCTCATCAGCTCTT  
 CTACCCACCTCCTGCTGGGCAGAGTCCGGCTCAACAAGGCTCAGGAGTGAAGTGGAGTTCAGCAGGTCAA  
 TGGCGTGACAGTGGGGCACTAGCTAGTGGAAATGCAGCCTGTAACCTCCACCATTCTGCCTGTCTGCA  
 GTGGGTGGAATAATTGGAGCTTTGCCAGGTAACCAACTGGCAATTAATGGCATTGTAGGAGCTTTAATG  
 GGGTTATGCAGACTCCTGTCACAATGTCCAGAACCCCTACCCCTCACCACACAACCGTACCACCTAA  
 TGCAACACATCCAATGCCAGCTACACTGACTAACAGTGCCTCAGGACTAGGATTACTTTCTGACCAGCAA  
 CGACAAATACTTATTCATCAACAGCAGTTTCAGCAGTTGTTAAATCTCAACAGCTCACACCAGTACACA  
 GGCACCCCACTTCACACAGCTACCACCAACCCATTTCTACCATCCATGGAGATAATGCAAGTCAGAAA  
 G

ACGCGTACGCGGCCGCTCGAGCAGAACTCATCTCAGAAGAGGATCTGGCAGCAATGATATCCTGGATT  
 ACAAGGATGACGACGATAAGGTTTAA

**Protein Sequence:**

>RC217295 representing NM\_004641  
 Red=Cloning site Green=Tags(s)

MVSSDRPVSLSEDEVSHSMKEMIGCCVCSDERGWAENPLVYCDGHGCSVAHVQACYGIVQVPTGPWF CRK  
 CESQERAAVRCELCPHKD GALKRRTDNGGWAHVVCALYIPEVQFANVSTMEPIVLQSVPHDRYNTCYIC  
 DEQGRESKAATGACMTCNKHGCRQAFHVTCAQFAGLLCEEEGNGADNVQYCYCKYHFSKLLKSKRGSNR  
 SYDQSLSDSSSHSQDKHHEKEKKYKEKDKHKQKHKQPEPSPALVPSLTVTTEKTYTSTSNNSISGSLK  
 RLEDTTARFTNANFQEVSAHTSSGKDVSETRGSEGGKSSAHSSQRGRKPGGGRNPGTTVSAASFPFQ  
 GSFSGTPGSVKSSSGSSVQSPQDFLSFTDSDLRNDYSYSHSQSSATKDVHKGESGSEGGVNSFSTLIGL  
 PSTSAVTSQPKSFENSPGDLGNSSLPTAGYKRAQTSGIEEETVKEKKRKGKQSKHGPGRPKGNKNQENV  
 SHLSVSSASPTSSVASAAGSITSSSLQKSPTLLRNGSLQSLSVGSSPVGSEISMQRHGDGACPTTTFSEL  
 LNAIHNDRGDSSTLTKQELKFIGIYNSNDVAVSFPNVVSGSGSSTPVSSSHLPQQSSGHLQQV GALSPSA  
 VSSAAPAVATTQANTLSGSSLSQAPSHMYGNRSNSMAALIAQSENNTDQDLGDNSRNLVGRGSSPRGS  
 LSPRSPVSSLQIRYDQPGNSSLENLPPVAASIEQLLERQWSEGGQFLLEQGTPSDILGMLKSLHQLQVEN  
 RRLEEQIKNLTAKKERLQLLNAQLSVPFPTITANPSPSHQIHTFSAQTAPTTDSLNSSKSPHIGNSFLPD  
 NSLPVLNQDLTSSGQSTSSSALSTPPPAGQSPAQQSGVSGVQVNGVTVGALASGMQPVSTIPAVSA  
 VGGIIGALPGNQLAINGIVGALNGVMQTPVTMSQNPTPLTHTTVPPNATHPMPATLTNSASGLLLSDQQ  
 RQILIHQQQFQQLLNSQQLTPVHRHPHFTQLPPTHFSPSMEIMQVRK

TRTRPLEQKLISEEDLAANDILDYKDDDDKV

**Chromatograms:**

[https://cdn.origene.com/chromatograms/mg2854\\_d10.zip](https://cdn.origene.com/chromatograms/mg2854_d10.zip)

**Restriction Sites:**

SgfI-MluI

**Cloning Scheme:**


**ACCN:** NM\_004641

**ORF Size:** 3081 bp

**OTI Disclaimer:** The molecular sequence of this clone aligns with the gene accession number as a point of reference only. However, individual transcript sequences of the same gene can differ through naturally occurring variations (e.g. polymorphisms), each with its own valid existence. This clone is substantially in agreement with the reference, but a complete review of all prevailing variants is recommended prior to use. [More info](#)

**OTI Annotation:** This clone was engineered to express the complete ORF with an expression tag. Expression varies depending on the nature of the gene.

**Components:** The ORF clone is ion-exchange column purified and shipped in a 2D barcoded Matrix tube containing 10ug of transfection-ready, dried plasmid DNA (reconstitute with 100 ul of water).

- Reconstitution Method:**
1. Centrifuge at 5,000xg for 5min.
  2. Carefully open the tube and add 100ul of sterile water to dissolve the DNA.
  3. Close the tube and incubate for 10 minutes at room temperature.
  4. Briefly vortex the tube and then do a quick spin (less than 5000xg) to concentrate the liquid at the bottom.
  5. Store the suspended plasmid at -20°C. The DNA is stable for at least one year from date of shipping when stored at -20°C.

**RefSeq:** [NM\\_004641.3](#)

**RefSeq Size:** 5140 bp

**RefSeq ORF:** 3084 bp

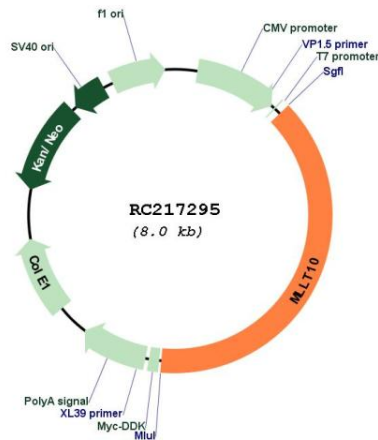
**Locus ID:** 8028

**UniProt ID:** [P55197](#)

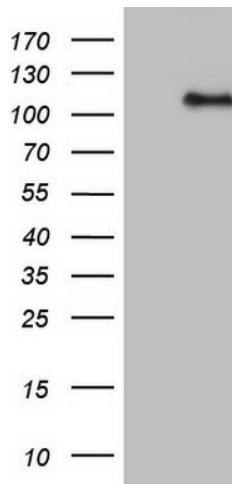
**Cytogenetics:** 10p12.31  
**Domains:** PHD  
**Protein Families:** Druggable Genome, Transcription Factors  
**MW:** 108.8 kDa

**Gene Summary:** This gene encodes a transcription factor and has been identified as a partner gene involved in several chromosomal rearrangements resulting in various leukemias. Multiple transcript variants encoding different isoforms have been found for this gene. [provided by RefSeq, Sep 2010]

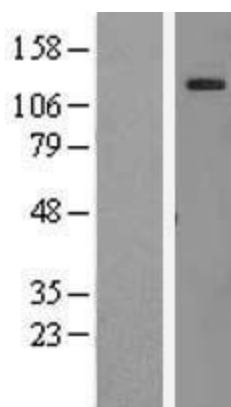
**Product images:**



Circular map for RC217295



HEK293T cells were transfected with the pCMV6-ENTRY control (Cat# [PS100001], Left lane) or pCMV6-ENTRY MLLT10 (Cat# RC217295, Right lane) cDNA for 48 hrs and lysed. Equivalent amounts of cell lysates (5 ug per lane) were separated by SDS-PAGE and immunoblotted with anti-MLLT10 antibody (Cat# [TA890006]). Positive lysates [LY417852] (100ug) and [LC417852] (20ug) can be purchased separately from OriGene.



Western blot validation of overexpression lysate (Cat# [LY417852]) using anti-DDK antibody (Cat# [TA50011-100]). Left: Cell lysates from untransfected HEK293T cells; Right: Cell lysates from HEK293T cells transfected with RC217295 using transfection reagent MegaTran 2.0 (Cat# [TT210002]).