

Product datasheet for **RC217294**

SLC22A12 (NM_144585) Human Tagged ORF Clone

Product data:

Product Type:	Expression Plasmids
Product Name:	SLC22A12 (NM_144585) Human Tagged ORF Clone
Tag:	Myc-DDK
Symbol:	SLC22A12
Synonyms:	OAT4L; RST; URAT1
Mammalian Cell Selection:	Neomycin
Vector:	pCMV6-Entry (PS100001)
E. coli Selection:	Kanamycin (25 ug/mL)



[View online »](#)

ORF Nucleotide Sequence:

>RC217294 representing NM_144585
 Red=Cloning site Blue=ORF Green=Tags(s)

TTTTGTAATACGACTCACTATAGGGCGGCCGGAATTCGTCGACTGGATCCGGTACCGAGGAGATCTGCC
 GCCGCGATCGCC

ATGGCATTCTGAACCTCTGGACCTCGTGGTGGCTGGGCAGGTTCCAGGTTCTCCAGACGATGGCTC
 TGATGGTCTCCATCATGTGGCTGTGATACCAGAGCATGCTGGAGAACTTCTCGGCCGCCGTGCCAGCCA
 CCGCTGCTGGGCACCCCTCCTGGACAACAGCACGGCTCAGGCCAGCATCCTAGGGAGCTTGAATCCTGAG
 GCCCTCTGGCTATTTCCATCCCGCCGGGCCCAACCAGAGGCCCAAYCAGTGCCGCCGCTTCCGCCAGC
 CACAGTGGCAGCTCTGGACCCCAATGCCACGGCCACCAGCTGGAGCGAGGCCGACAGGAGCCGTGTGT
 GGATGGCTGGGTCTATGACCGCAGCATCTTACCTCCACAATCGTGGCCAAGTGGAACTCGTGTGTGAC
 TCTCAYGCTCTGAAGCCCATGGCCAGTCCATCTACCTGGCTGGGATTCTGGTGGAGCTGCTGCGTGG
 GCCCTGCCTCAGACAGGTTGGGCGCAGGCTGGTGTAACTGGAGCTACCTTCAGATGGCTGTGATGGG
 TACGGCAGCTGCCTTCGCCCTGCCTCCCGTGTACTGCTGTCCGCTTCTGTTGGCCTTTGCCGTG
 GCAGGCGTCATGATGAACACGGGCACTCTCTGATGGAGTGGACGGCGGCACGGGCCGACCCCTGGTGA
 TGACCTTGAACCTCTCGGGCTTACGCTTCGGCCATGGCCTGACAGCTGCAGTGGCCTACGGTGTGCGGGA
 CTGGACACTGCTGCAGCTGGTGGTCTCGGTCCCCTTCTTCTCTGCTTTTTGACTCCTGGTGGCTGGCA
 GAGTCGGCACGATGGCTCCTCACCACAGGCAGGCTGGATTGGGGCCTGCAGGAGCTGTGGAGGGTGGCTG
 CCATCAACGAAAGGGGGCAGTGCAGGACACCTGACCCCTGAGGCTTGTCTTTCAGCCATGCGGGAGGA
 GCTGAGCATGGCCAGCCTCCTGCCAGCCTGGGACCCCTGCTCCGCATGCCCGGACTGCGCTTCCGGACC
 TGTATCTCCACGTTGTGCTGGTTCGCTTTGGCTTACCTTCTTCGGCCTGGCCCTGGACCTGCAGGCC
 TGGGACGAACATCTTCTGCTCAAATGTTTATTGGTGTCTGGACATCCAGCCAAGATGGGCGCCCT
 GCTGCTGCTGAGCCACCTGGGCCGCCGCCACGCTGGCCGCATCCCTGTTGCTGGCGGGCTCTGCATT
 CTGGCCAACACGCTGGTGGCCACGAAATGGGGCTCTGCGCTCAGCCTTGGCCGTGCTGGGGCTGGGCG
 GGGTGGGGCTGCCTTACCTGCATCACCATCTACAGCAGCGAGCTTCCCCACTGTGCTCAGGATGAC
 GGCAGTGGGCTTGGGCCAGATGGCAGCCGTGGAGGAGCCATCCTGGGGCCTCTGGTCCGGCTGCTGGGT
 GTCCATGGCCCTGGCTGCCCTTGTGGTGTATGGGACGGTCCAGTGTGAGTGGCCTGGCCGCACTGC
 TTCTGCCCAGACCCAGAGCTTCCGCTGCCGACACCATCCAAGATGTGCAGAACCAGGCAGTAAAGAA
 GGCAACACATGGCAGCTGGGAACTCTGTCTAAAATCCACACAGTTT

ACGCGTACGCGGCCGCTCGAGCAGAACTCATCTCAGAAGAGGATCTGGCAGCAAATGATATCCTGGATT
 ACAAGGATGACGACGATAAGGTTTAA

Protein Sequence:

>RC217294 representing NM_144585
 Red=Cloning site Green=Tags(s)

MAFSELLDLVGLGRFQVLQTMALMVSIMWLCTQSMLNENFAAVPSHRCWAPLLDNSTAQASILGSLSP
 ALLAISIPPGPNQRXPQRRFRQPWQLLDPNATATSWSEADTEPCVDGWYDRSIFTSTIVAKWNLVCD
 SXALKPMAQSIYLAGILVGAACGPASDRFGRRVLVLTWSYLQMAVMGTAAAFAPAFPVYCLFRLLAFV
 AGVMMNTGTLMEWTAARARPLVMTLNSLGFSGHGLTAAVAYGVRDWLTLQLVSVPPFLCFLYSWWLA
 ESARWLLTTGRLDWGLQELWRVAAINGKAVQDTLTPEVLLSAMREELSMGQPPASLGTLLRMPGLRFRT
 CISTLCWFAGFTFFGLALDLQALGSNIFLLQMFIGVVDIPAKMGALLLSHLGRRPTLAASLLLAGLCI
 LANTLVPHEMGALRSALAVLGLGGVGAFTCITIYSELFPVLRMTAVGLGQMAARGGAILGPLVRLLG
 VHGPWLPLLVYGTVPVLSGLAALLLPETQSLPLPDTIQDVQNAVKKATHGTLGNSVLKSTQF

TRTRPLEQKLISEEDLAANDILDYKDDDDKV

Chromatograms:

https://cdn.origene.com/chromatograms/mk6124_a01.zip

Restriction Sites:

SgfI-MluI

Cloning Scheme:



ACCN: NM_144585

ORF Size: 1659 bp

OTI Disclaimer: Due to the inherent nature of this plasmid, standard methods to replicate additional amounts of DNA in E. coli are highly likely to result in mutations and/or rearrangements. Therefore, OriGene does not guarantee the capability to replicate this plasmid DNA. Additional amounts of DNA can be purchased from OriGene with batch-specific, full-sequence verification at a reduced cost. Please contact our customer care team at custsupport@origene.com or by calling 301.340.3188 option 3 for pricing and delivery.

The molecular sequence of this clone aligns with the gene accession number as a point of reference only. However, individual transcript sequences of the same gene can differ through naturally occurring variations (e.g. polymorphisms), each with its own valid existence. This clone is substantially in agreement with the reference, but a complete review of all prevailing variants is recommended prior to use. [More info](#)

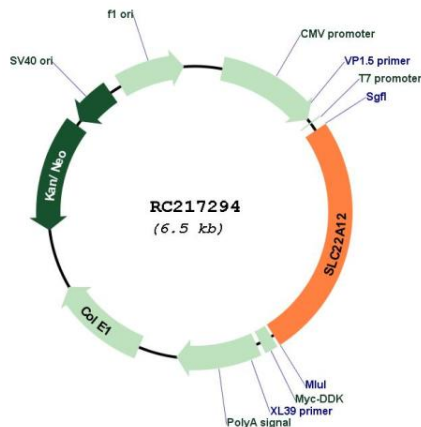
OTI Annotation: This clone was engineered to express the complete ORF with an expression tag. Expression varies depending on the nature of the gene.

Components: The ORF clone is ion-exchange column purified and shipped in a 2D barcoded Matrix tube containing 10ug of transfection-ready, dried plasmid DNA (reconstitute with 100 ul of water).

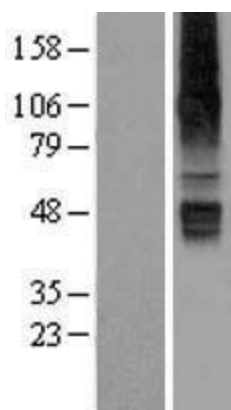
- Reconstitution Method:**
1. Centrifuge at 5,000xg for 5min.
 2. Carefully open the tube and add 100ul of sterile water to dissolve the DNA.
 3. Close the tube and incubate for 10 minutes at room temperature.
 4. Briefly vortex the tube and then do a quick spin (less than 5000xg) to concentrate the liquid at the bottom.
 5. Store the suspended plasmid at -20°C. The DNA is stable for at least one year from date of shipping when stored at -20°C.

Note:	Plasmids are not sterile. For experiments where strict sterility is required, filtration with 0.22um filter is required.
RefSeq:	<u>NM_144585.4</u>
RefSeq Size:	3206 bp
RefSeq ORF:	1662 bp
Locus ID:	116085
UniProt ID:	<u>Q96S37</u>
Cytogenetics:	11q13.1
Protein Families:	Transmembrane
MW:	59.4 kDa
Gene Summary:	The protein encoded by this gene is a member of the organic anion transporter (OAT) family, and it acts as a urate transporter to regulate urate levels in blood. This protein is an integral membrane protein primarily found in epithelial cells of the proximal tubule of the kidney. An elevated level of serum urate, hyperuricemia, is associated with increased incidences of gout, and mutations in this gene cause renal hypouricemia type 1. Alternative splicing results in multiple transcript variants. [provided by RefSeq, Jan 2013]

Product images:



Circular map for RC217294



Western validation with an anti-DDK antibody * L:
Control HEK293 lysate R: Over-expression lysate